

APP CRS	Rwy Ldg	5000
359°	TDZE	1321
	Apt Elev	1321

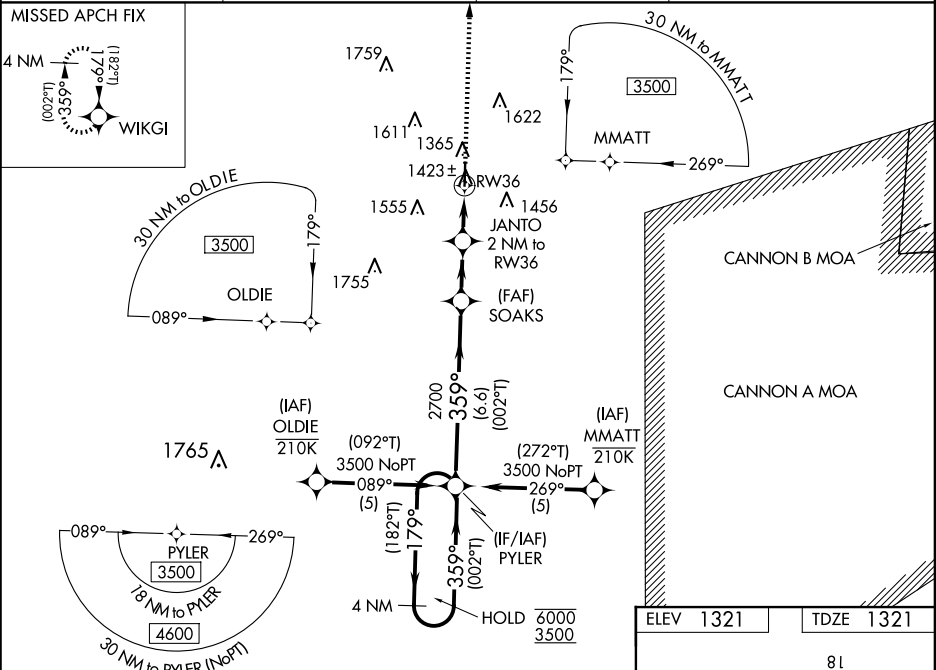
RNAV (GPS) RWY 36
FLOYD W JONES LEBANON (LBO)

RNP APCH - GPS.

Baro-VNAV and VDP NA when using OZS altimeter setting. For uncompensated Baro-VNAV systems, LNAV/VNAV NA below -17°C or above 54°C. Rwy 36 helicopter visibility reduction below ¾ SM NA. When local altimeter setting not received, use OZS altimeter setting; increase LNAV/VNAV DA to 1675 feet; increase all MDAs 100 feet and LNAV visibility Cats C and D ¾ SM, and Circling visibility Cats C and D ½ SM.

MISSED APPROACH:
Climb to 3500 direct WIKGI and hold.

AWOS-3PT 118.975	SPRINGFIELD APP CON 121.1 290.5	CLNC DEL 123.725	UNICOM 122.8 (CTAF) 0
---------------------	------------------------------------	---------------------	--------------------------



PROTOTYPE-NOT FOR NAVIGATION

