

Flight Procedures Cover Page	Task Action: FLIGHT CHECK	Task Type: IAP	Estimated Chart Date: 08/07/2025	APWS Task ID: 86DE214E00F84B50A08750FDDFB8B34	APWS Project ID: 747A6BBEF1F54A05B7D5AE338685CD19
Procedure: RNAV (GPS) RWY 36 AMDT 1		Enroute: NO	Specialist: Bruce, Richard		Agreement Number:
Airport ID: KLBO			Airport City: LEBANON		State: MO
Facility ID:	Facility Type:	Flight Inspection Remark Type: New FC Slot			
<div>Procedure Comments:</div> <div>CANCELS FDC NOTAM 4/1867.</div> <div>ACTIVE DATA USED FOR KLBO AIRPORT AND RUNWAYS.</div> <div>CONTACT RAKE MCGRAM, AJV-A422, (405) 954-8711.</div> <div><div>QUALITY 38 CHECKED</div><div>QUALITY 25 CHECKED</div></div>					

FIPC BASIC FORM							
PROCEDURE: RNAV (GPS) RWY 36 AMDT 1			AIRPORT NAME: FLOYD W JONES LEBANON		AIRPORT ID: KLBO	SPECIAL CONTROL NO: OG-04-228-25	
FAC ID: KLBO36.01		CITY: LEBANON			ST: MO	ORIG CHART DATE: 08/07/2025	
DFL TYPE: PROC/V	THIRD PARTY: <input type="checkbox"/> YES	EST. TIME ON SITE: 0.5	REIMB. NUMBER:		PTS TASK ID: 86DE214E00F84B50A08750FDDDFBB8B34		
PREFLIGHT NOTES							
REVIEWER:					DATE:		
COMMENTS:					CHECK ONE:		
					<input type="checkbox"/> FLT CK REQ <input type="checkbox"/> NFCR <input type="checkbox"/> REJECT		
							YES
					CPV COMPLETE?		X
PROCEDURE RESULTS							
INSPECTION DATE: 06/20/2025		CREW #: VN568	N #: N73	INSTRUMENT PROCEDURE STATUS: <input checked="" type="checkbox"/> SAT <input type="checkbox"/> SAT W/CHANGES <input type="checkbox"/> UNSAT		ARINC CODING: <input checked="" type="checkbox"/> SAT <input type="checkbox"/> SAT/GOLD <input type="checkbox"/> UNSAT	
FLIGHT INSPECTOR SIGNATURE: russell roslewski @ 06/20/2025 15:05			PRINTED NAME: ROSLEWSKI, RUSSELL BRIAN				NOTAM INITIATED? <input type="checkbox"/> YES <input checked="" type="checkbox"/> NO
FLIGHT INSPECTOR REMARKS:							
IN-FLIGHT OBSTACLE REPORT							
OBSTRUCTION ID #:	COORDINATES OR LOCATION:		GNSS ALTITUDE (MSL):		BAROMETRIC ALTITUDE (MSL):		HEIGHT ABOVE GROUND LEVEL:

APP CRS	Rwy Ldg	5000
359°	TDZE	1321
	Apt Elev	1321

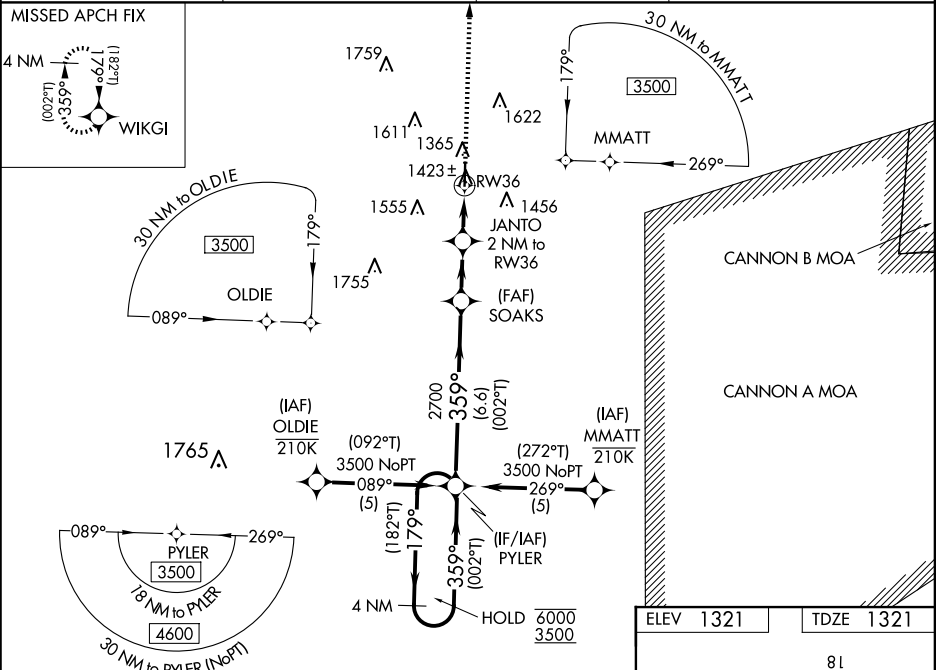
RNAV (GPS) RWY 36
FLOYD W JONES LEBANON (LBO)

RNP APCH - GPS.

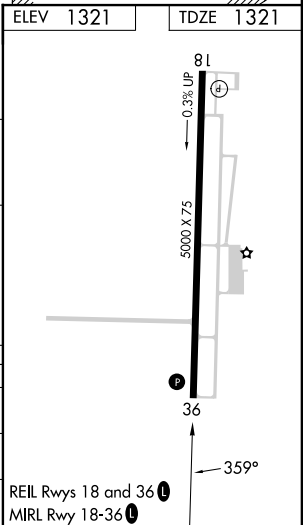
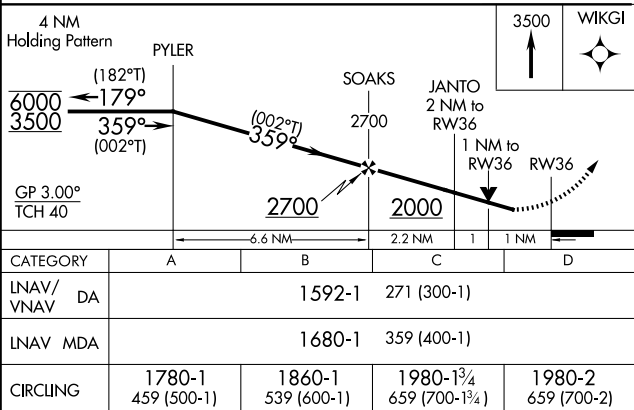
Baro-VNAV and VDP NA when using OZS altimeter setting. For uncompensated Baro-VNAV systems, LNAV/VNAV NA below -17°C or above 54°C. Rwy 36 helicopter visibility reduction below ¾ SM NA. When local altimeter setting not received, use OZS altimeter setting; increase LNAV/VNAV DA to 1675 feet; increase all MDAs 100 feet and LNAV visibility Cats C and D ¾ SM, and Circling visibility Cats C and D ½ SM.

MISSED APPROACH:
Climb to 3500 direct WIKGI and hold.

AWOS-3PT 118.975	SPRINGFIELD APP CON 121.1 290.5	CLNC DEL 123.725	UNICOM 122.8 (CTAF) 0
---------------------	------------------------------------	---------------------	--------------------------



PROTOTYPE-NOT FOR NAVIGATION



APP CRS 359°	Rwy ldg TDZE Apt Elev	5000 1321 1321
------------------------	-----------------------------	---

OLD

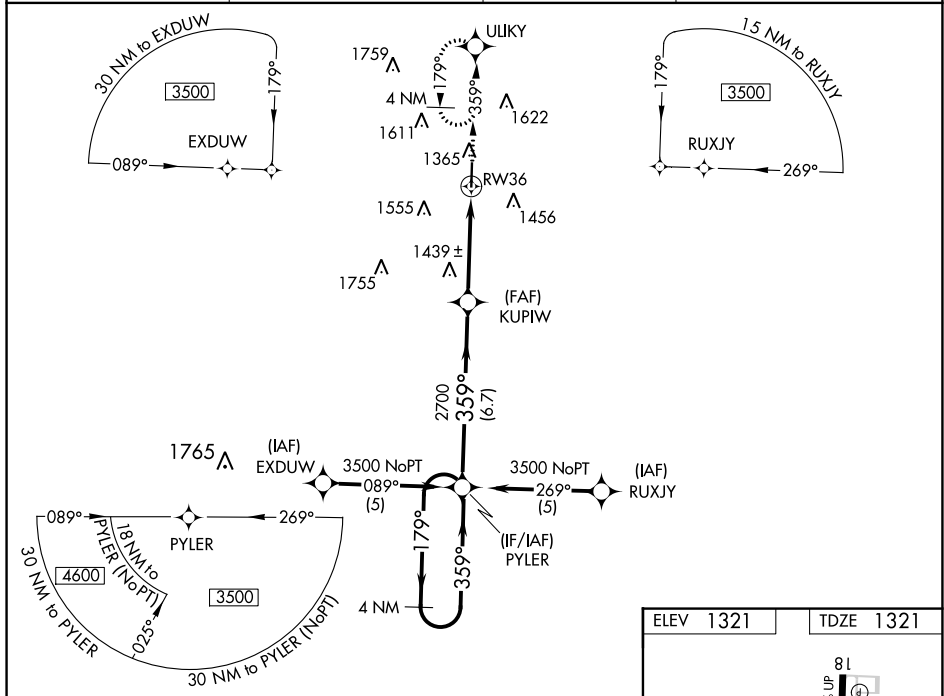
RNAV (GPS) RWY 36

FLOYD W JONES LEBANON (LB0)

T setting: increase LNAV/VNAV DA to 1786 feet and all visibilities $\frac{1}{8}$ SM; increase
A NA all MDAs 120 feet and LNAV visibility Cat C $\frac{3}{8}$ SM, Cat D $\frac{1}{8}$ and Circling visibility
Cat C/D $\frac{1}{2}$ SM. Baro-VNAV NA when using Springfield-Branson Ntl altimeter setting.
Baro-VNAV NA below -17° C (1° F). DME/DME RNP-0.3 NA.

MISSED APPROACH: Climb to 3500 direct ULIKY and hold.

AWOS-3PT 118.975	SPRINGFIELD APP CON 121.1 290.5	CLNC DEL 123.725	UNICOM 122.8 (CTAF) 0
----------------------------	---	----------------------------	---------------------------------



4 NM Holding Pattern

3500 ← 179°
359° →

GP 3.00°
TCH 47

3500

359°

359°

2700

6.7 NM

3.1 NM

1.1

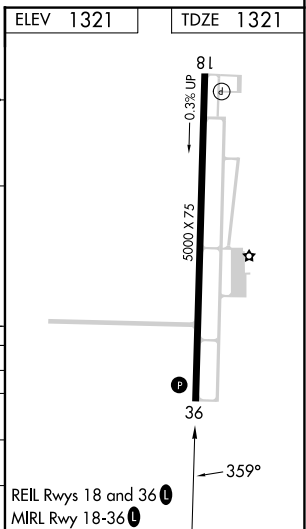
*1.1 NM to RW36

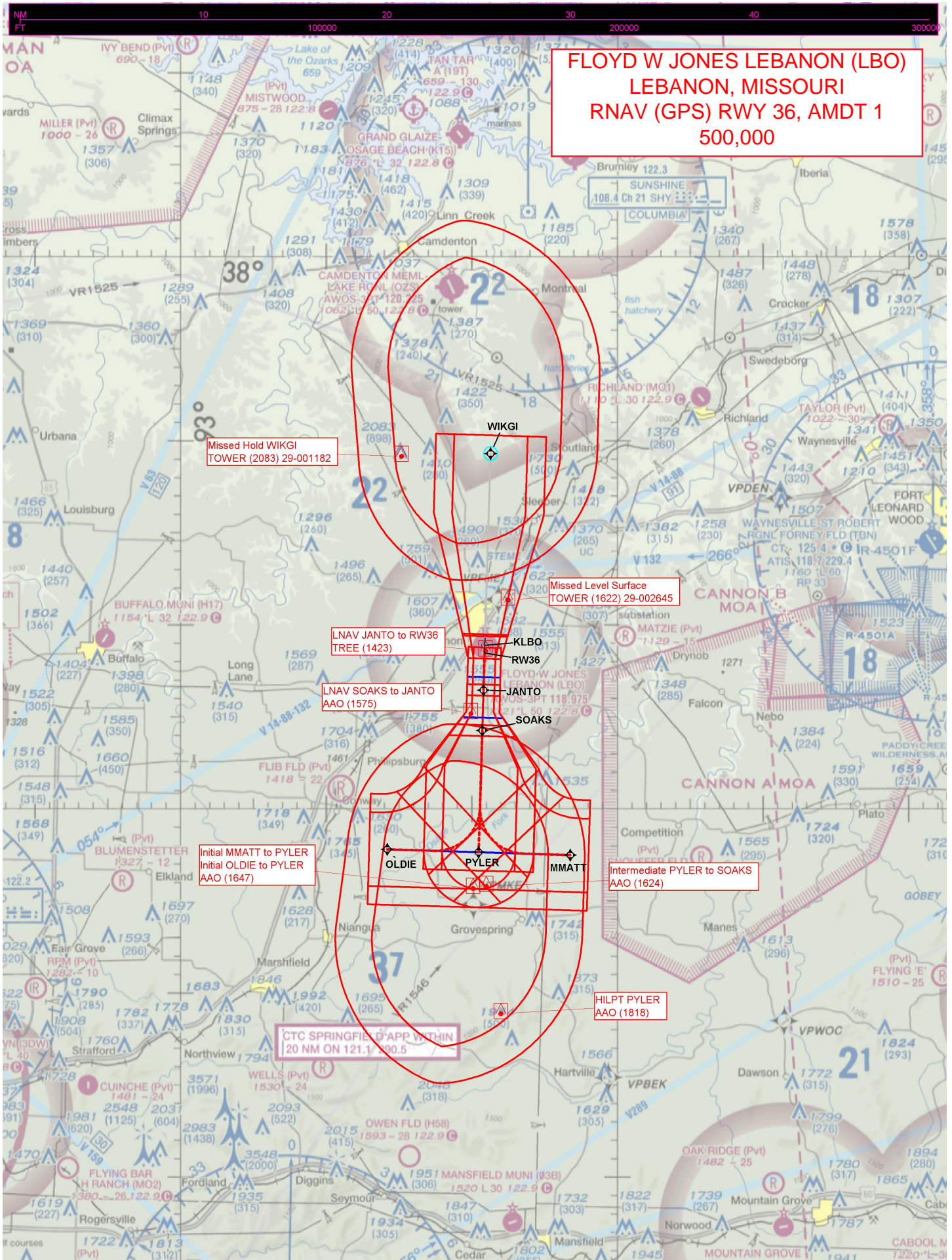
RW36

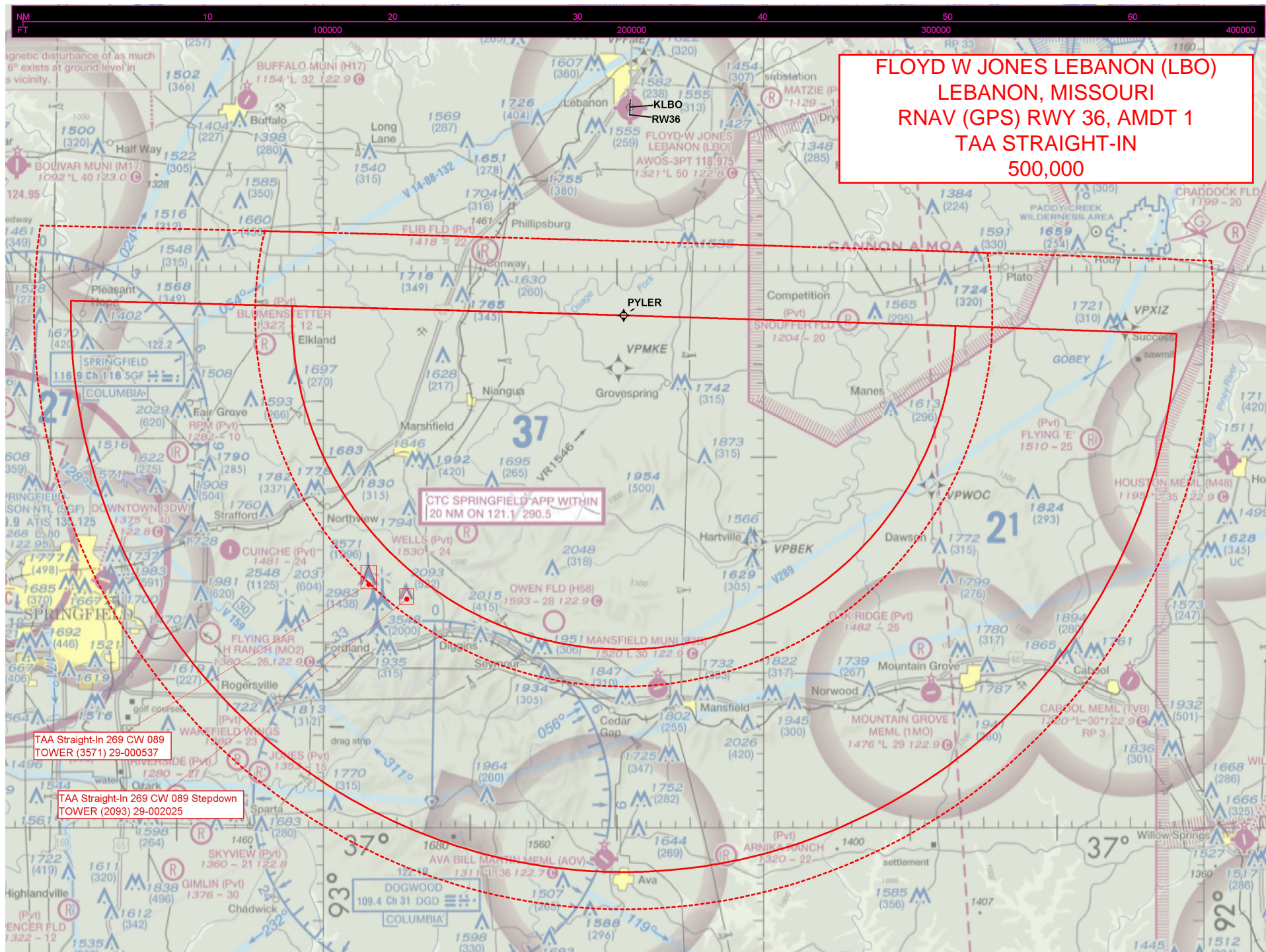
ULIKY

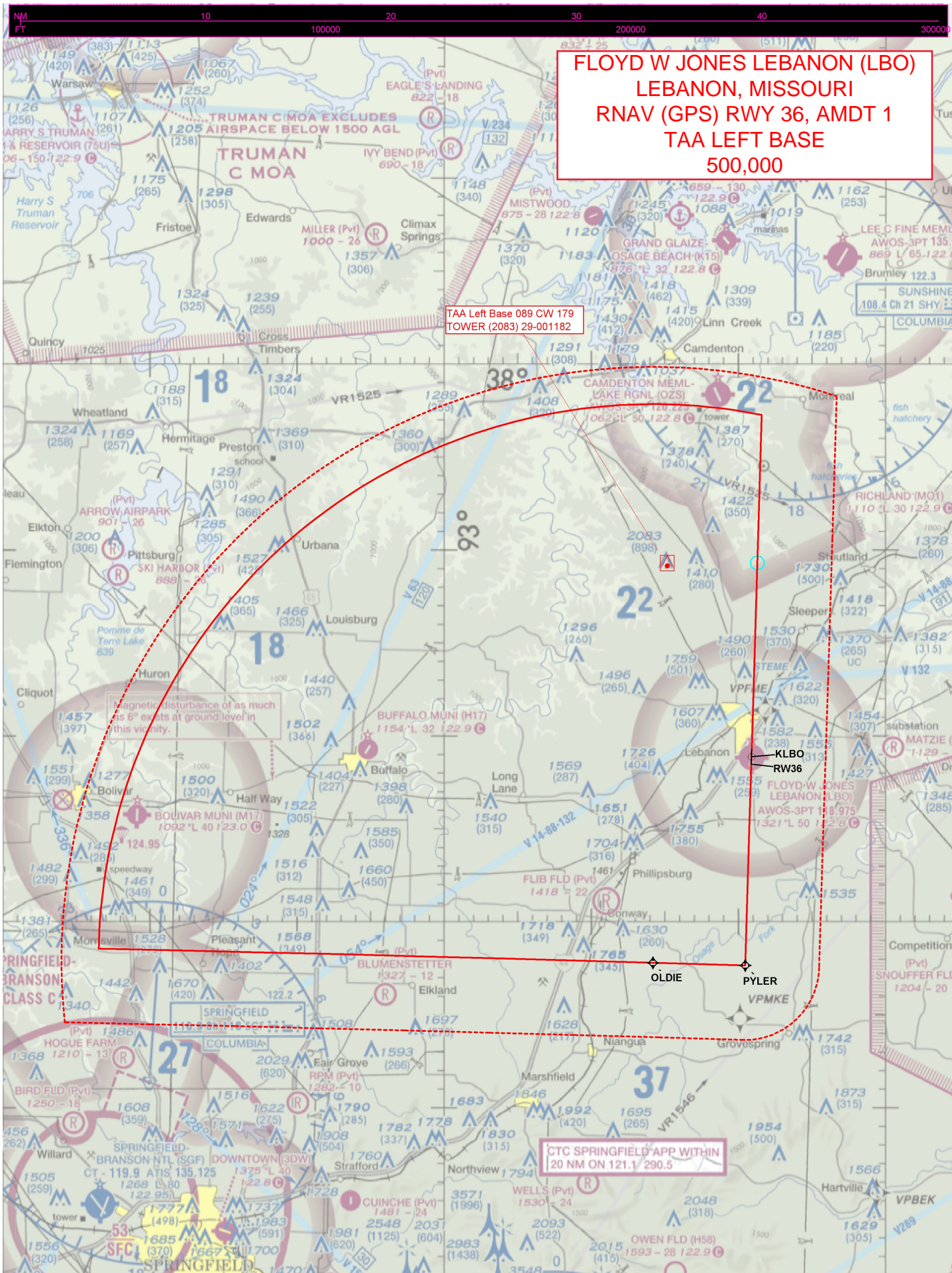
*LNAV only, VDP NA when using Springfield-Branson Ntl altimeter setting.

CATEGORY	A	B	C	D
GLS PA DA	NA			
LNAV/VNAV DA	1680-1¼ 359 (400-1¼)			
LNAV MDA	1700-1 379 (400-1)			1700-1¼ 379 (400-1¼)
CIRCLING	1820-1 499 (500-1)	1860-1 539 (600-1)	1980-1¾ 659 (700-1¾)	1980-2 659 (700-2)









FLOYD W JONES LEBANON (LBO)
LEBANON, MISSOURI
RNAV (GPS) RWY 36, AMDT 1
TAA LEFT BASE
500,000

TAA Left Base 089 CW 179
TOWER (2083) 29-001182

Magnetic disturbance of as much
as 6° exists at ground level in
this vicinity.

CTC SPRINGFIELD APP WITHIN
20 NM ON 121.1/290.5

CTC SPRINGFIELD-APP WITHIN
20 NM ON 121.1 290.5

