

Flight Procedures Cover Page	Task Action: Abbreviated Amendment	Task Type: IAP	Estimated Chart Date: 08/10/2023	APWS Task ID: 865C38166CA5408185359F29A41EBD71	APWS Project ID: 00A1C7CB20F04668A8A25B2869816382
Procedure: HI-ILS Z OR LOC Z RWY 14 AMDT 3B		Enroute: NO	Specialist: Johnson, Daniel		Agreement Number:
Airport ID: KJAX			Airport City: JACKSONVILLE		State: FL
Facility ID: CZH	Facility Type: ILS	Flight Inspection Remark Type:			
<div>Procedure Comments: UTILIZED ACTIVE AIRNAV DATA FOR KJAX RWY 14. DELETED AMG FEEDER SEGMENT. PROCESSED IAW TECHNICAL SUPPORT GROUP (AJF-17) MEMO DATED 07/07/2021 GUIDANCE FOR PROCEDURAL CHANGES REQUIRING FLIGHT INSPECTION/VALIDATION. CONTACT JASON KRETSCHMER: AJV-A421 , 405-954-4019</div> <div><div>Digitally signed by <b>JASON KRETSCHMER</b> May 19, 2023</div><div>QUALITY 10 CHECKED</div></div>					

LOC I-CZH <b>110.5</b>	APCH CRS <b>137°</b>	Rwy Idg THRE Arpt Elev <b>7701</b> <b>27</b> <b>30</b>
---------------------------	-------------------------	---

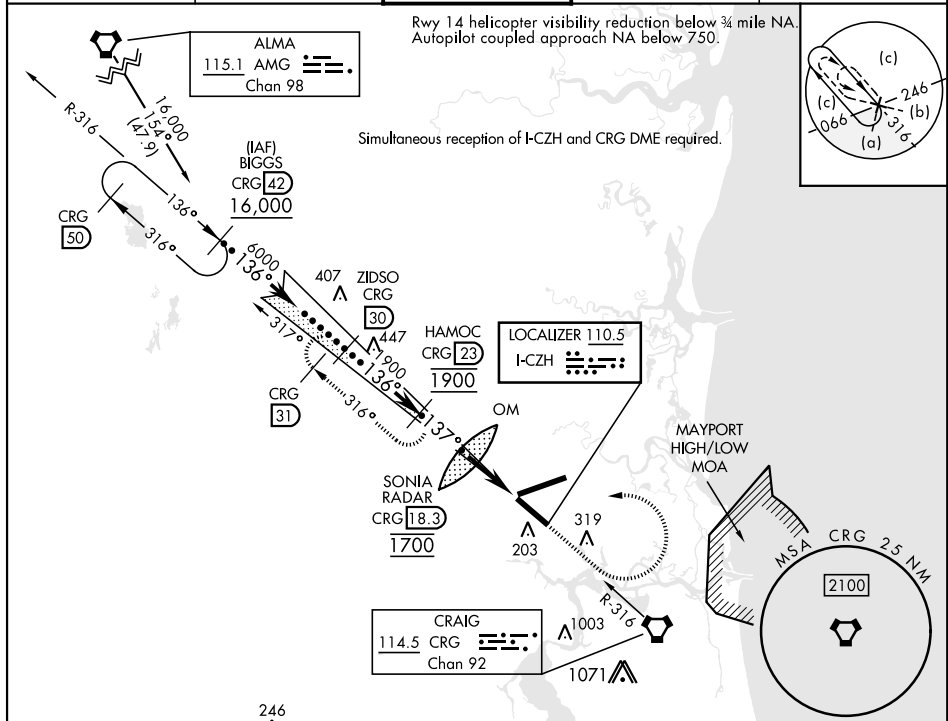
OLD

HI-ILS Z or LOC Z RWY 14

JACKSONVILLE INTL (KJAX)

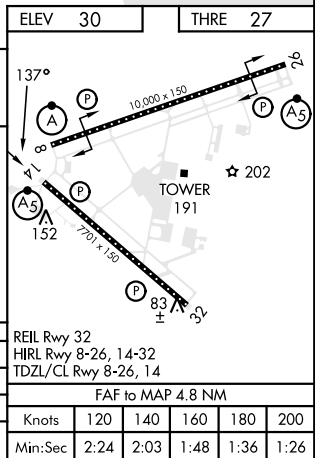
DME required * When ALS inop, increase vis to ¾ mile. ** When ALS inop, increase vis to 1 mile.	MALSR A5	MISSED APPROACH: Climb to 2000 then climbing left turn to 4000 via CRG R-316 to HAMOC 23 DME and hold.
---	-------------	--

ATIS <b>125.85</b>	APP CON <b>119.0 269.9</b>	TOWER <b>118.3 317.7</b>	GND CON <b>121.9 348.6</b>	CLNC DEL <b>119.5 290.275</b>
-----------------------	-------------------------------	-----------------------------	-------------------------------	----------------------------------



EMERG SAFE ALT 100 NM 2800 FROM CRG VORTAC

VGSI and ILS glidepath not coincident (VGSI Angle 3.00/TCH 54).			2000	4000	HAMOC CRG 23
BIGGS R-316 42	ZIDSO R-316 30	HAMOC R-316 23	SONIA RADAR 18.3 OM/INT	KUYER 14.7	13.5
16,000	6000	1900	1700	480	14.4
GS 3.00° TCH 54					
			3.6 NM	1.2 NM	
CATEGORY	C	D	E		
S-ILS 14 *	227-½	200 (200-½)			
S-LOC 14 **	380-¾	353 (400-¾)			
CIRCLING	580-1½ 550 (600-1½)	640-2 610 (700-2)	760-2½ 730 (800-2½)		



HI-ILS Z or LOC Z RWY 14