

Flight Procedures Cover Page	Task Action: Amendment	Task Type: IAP	Estimated Chart Date: 04/23/2020	APWS Task ID: 861C8673259D4C029873E9C4A70D3729	APWS Request ID: AAEF4F8B7D3743BBBD9F81ABB4FC00A5
Procedure: VOR-A AMDT 1A		Enroute: NO	Specialist: Sickels, Dale		Agreement Number:
Airport ID: KENL	Airport Name: CENTRALIA MUNI		Airport City: CENTRALIA		State: IL
Facility ID: ENL	Facility Type: VORTAC	Flight Inspection Remark Type: New FC Slot			
<p><b>Procedure Comments:</b>            PROCESSED IAW AIRCRAFT OPERATIONS GROUP (AJW-33) MEMO, OCTOBER 3, 2018, SUBJECT: FLIGHT INSPECTION REVIEW NOT REQUIRED.</p> <p>P-NOTAM.</p> <p>CIRCLING ICON.</p> <p>ACTIVE DATA USED.</p> <p>CONTACT DAVID DANNER, AJV-A421, 405-954-5077.</p>					



2/21/2020



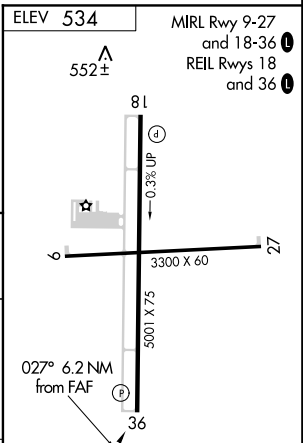
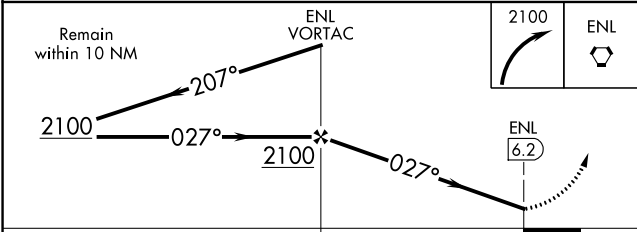
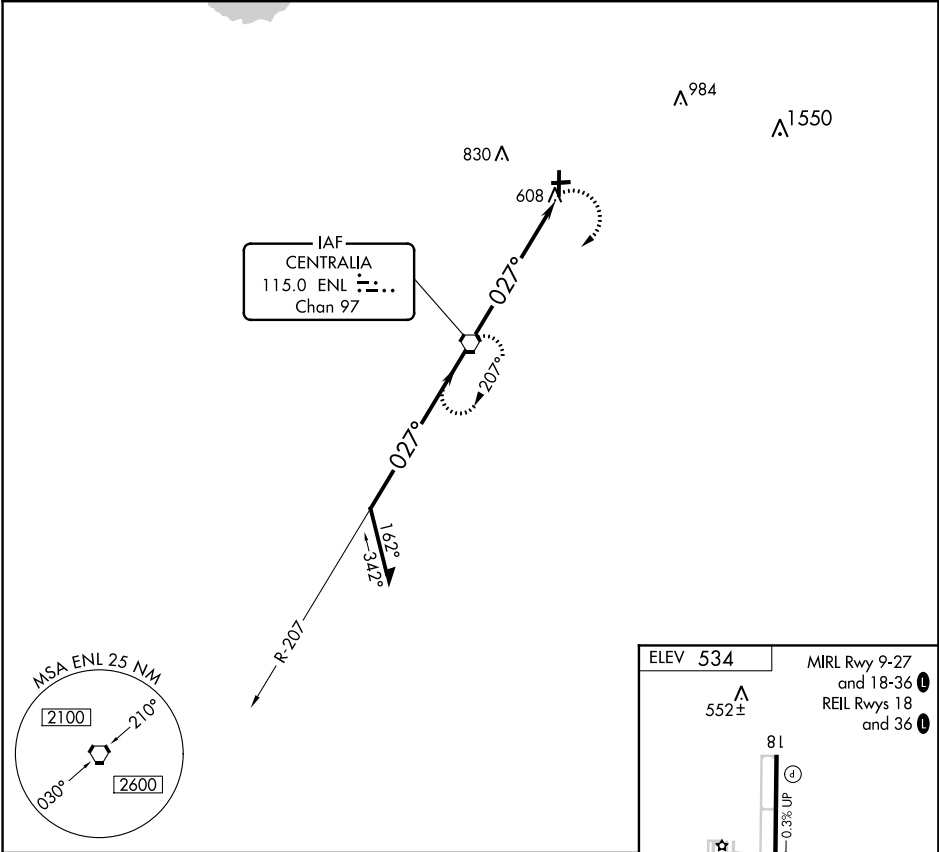
VORTAC ENL <b>115.0</b> Chan <b>97</b>	APP CRS <b>027°</b>	Rwy Idg TDZE Apt Elev	<b>N/A</b> <b>N/A</b> <b>534</b>
--	------------------------	-----------------------------	--

OLD

VOR-A  
CENTRALIA MUNI (ENL)

	MISSED APPROACH: Climbing right turn to 2100 direct ENL VORTAC and hold.
--	---

AWOS-3 <b>121.125</b>	KANSAS CITY CENTER <b>127.7 351.825</b>	UNICOM <b>122.8 (CTAF)</b>
--------------------------	--	-------------------------------



CATEGORY	A	B	C	D	FAF to MAP 6.2 NM					
CIRCLING	980-1 446 (500-1)	1000-1 466 (500-1)	1000-1½ 466 (500-1½)	1200-2 666 (700-2)	Knots	60	90	120	150	180
					Min:Sec	6:12	4:08	3:06	2:29	2:04



89°0'0"W

38°30'0"N

