

Flight Procedures Cover Page	Task Action: FLIGHT CHECK	Task Type: IAP	Estimated Chart Date: 04/22/2021	APWS Task ID: 4681460122B74E31A1B4B4C695386ED5	APWS Project ID: F943DAE7CC0A44C2B32A96C969E29036
Procedure: RNAV (GPS) RWY 27 AMDT 2		Enroute: NO	Specialist: Campbell, Colin		Agreement Number:
Airport ID: KMSS			Airport City: MASSENA		State: NY
Facility ID:	Facility Type:	Flight Inspection Remark Type: New FC Slot			
<div>Procedure Comments: MSS VORMON</div> <div>ACTIVE AIRPORT DATA USED FOR PROCEDURE</div> <div>REQUEST 4D ACCURACY VERIFICATION ON OBSTACLE: WINDMILL (CA-028132) 450626.43N/0750627.25W 948'</div> <div>CONTACT: JASON KRETSCHMER (405) 954-4019     <i>Digitally signed by</i> <b>JASON KRETSCHMER</b> Jan 14, 2021</div> <div>QUALITY 41 CHECKED</div> <div>QUALITY 10 CHECKED</div>					

MASSENA, NEW YORK

AL-905 (FAA)

FIG

APP CRS <b>270°</b>	Rwy Idg <b>3880</b>
	TDZE <b>205</b>
	Apt Elev <b>221</b>

## RNAV (GPS) RWY 27

MASSENA INTL-RICHARDS FIELD (MSS)

RNP APCH - GPS.

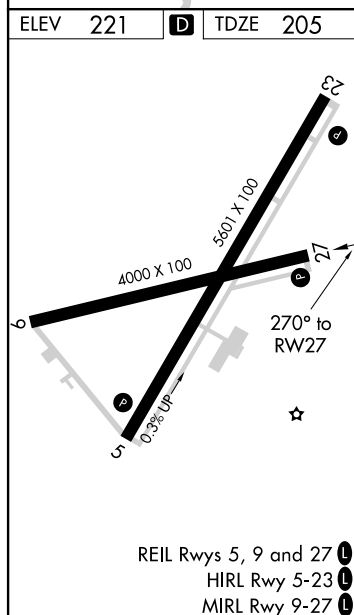
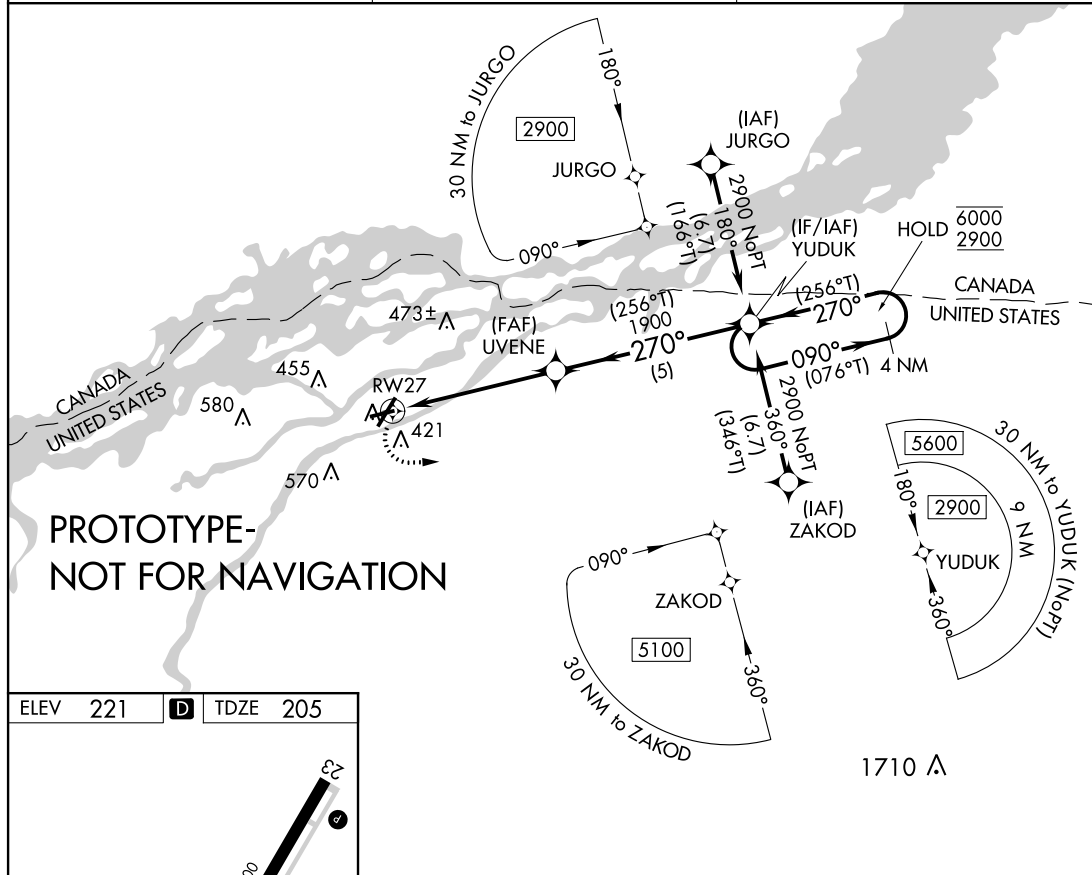
- ▼ Rwy 27 helicopter visibility reduction below 1 SM NA.
- ▲ Straight-in Rwy 27 NA at night, Circling Rwy 9, 23, 27 NA at night.

MISSED APPROACH:  
Climb to 1000 then climbing  
left turn 2900 direct YUDUK  
and hold.

ASOS  
**128.075**

BOSTON CENTER  
**135.25 377.1**

UNICOM  
**123.0 (CTAF) 0**



1000	2900	YUDUK	Visual Segment - Obstacles.			
RW27		UVENE	YUDUK			
		1900	4 NM Holding Pattern (076°T)			
			090° → 6000			
			← 270° (256°T) 2900			
			5.2 NM			
			5 NM			
CATEGORY	A	B	C	D		
LNNAV MDA	680-1	475 (500-1)	680-1 3/8	475 (500-1 3/8)		
CIRCLING	740-1	519 (600-1)	800-1 3/4	880-2		
			579 (600-1 3/4)	659 (700-2)		

AUTOMATED AL-905 RNAV (GPS) RWY 27

NE-2  
01/07/2021  
COMPILER: PD  
REVIEWER:  
DBL CHKR:  
EFF: FIG

MASSENA, NEW YORK

Amdt 2 FIG

44°56'N-74°51'W

MASSENA INTL-RICHARDS FIELD (MSS)  
**RNAV (GPS) RWY 27**

APP CRS  
270°

Rwy Idg	<b>3880</b>
TDZE	<b>205</b>
Apt Elev	<b>221</b>

**OLD**

# RNAV (GPS) RWY 27

## MASSENA INTL-RICHARDS FIELD (MSS)

RNP APCH.



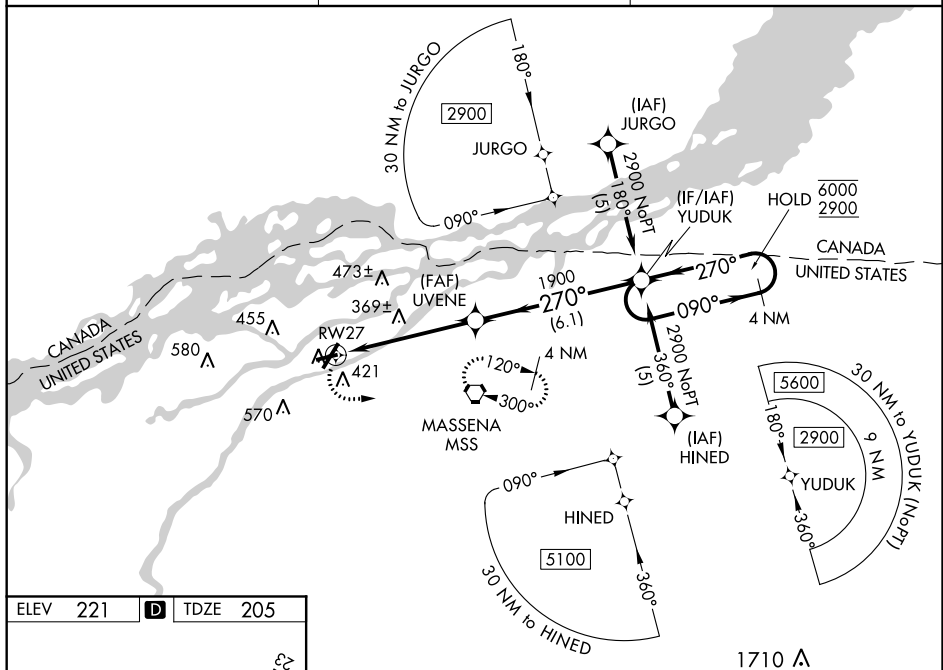
Rwy 27 helicopter visibility reduction below 1 SM NA.  
Straight-in Rwy 27 NA at night, Circling 9, 23, 27 NA at night.

**MISSED APPROACH:**  
Climbing left turn to 1900  
direct MSS VORTAC and hold.

ASOS  
128.075

BOSTON CENTER  
135.25 377.1

UNICOM  
123.0 (CTAF) **L**

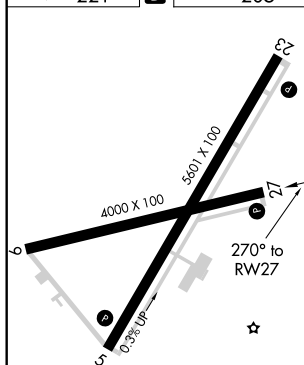


NE-2, 03 DEC 2020 to 31 DEC 2020

ELEV	221	<b>D</b>	TDZE	205
------	-----	----------	------	-----

**D**

DZE



REIL Rwy 5, 9 and 27 **L**  
HIRL Rwy 5-23 **L**  
MIRL Rwy 9-27 **L**

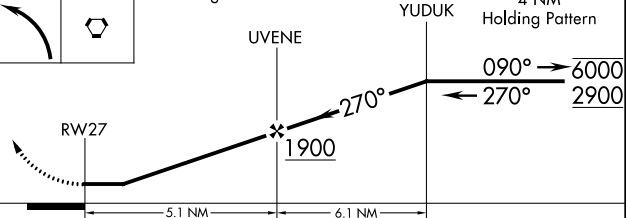
1900

MSS

### Visual Segment - Obstacles.

YUDU

4 NM  
Holding Pattern



CATEGORY	A	B	C	D
LNAY MDA	680-1 475 (500-1)		680-1 $\frac{3}{8}$ 475 (500-1 $\frac{5}{8}$ )	680-1 $\frac{1}{2}$ 475 (500-1 $\frac{1}{2}$ )
CIRCLING	740-1 519 (600-1)		800-1 $\frac{1}{2}$ 579 (600-1 $\frac{1}{2}$ )	900-2 $\frac{1}{4}$ 679 (700-2 $\frac{1}{4}$ )

MASSENA, NEW YORK

Amdt 1C 03JAN19

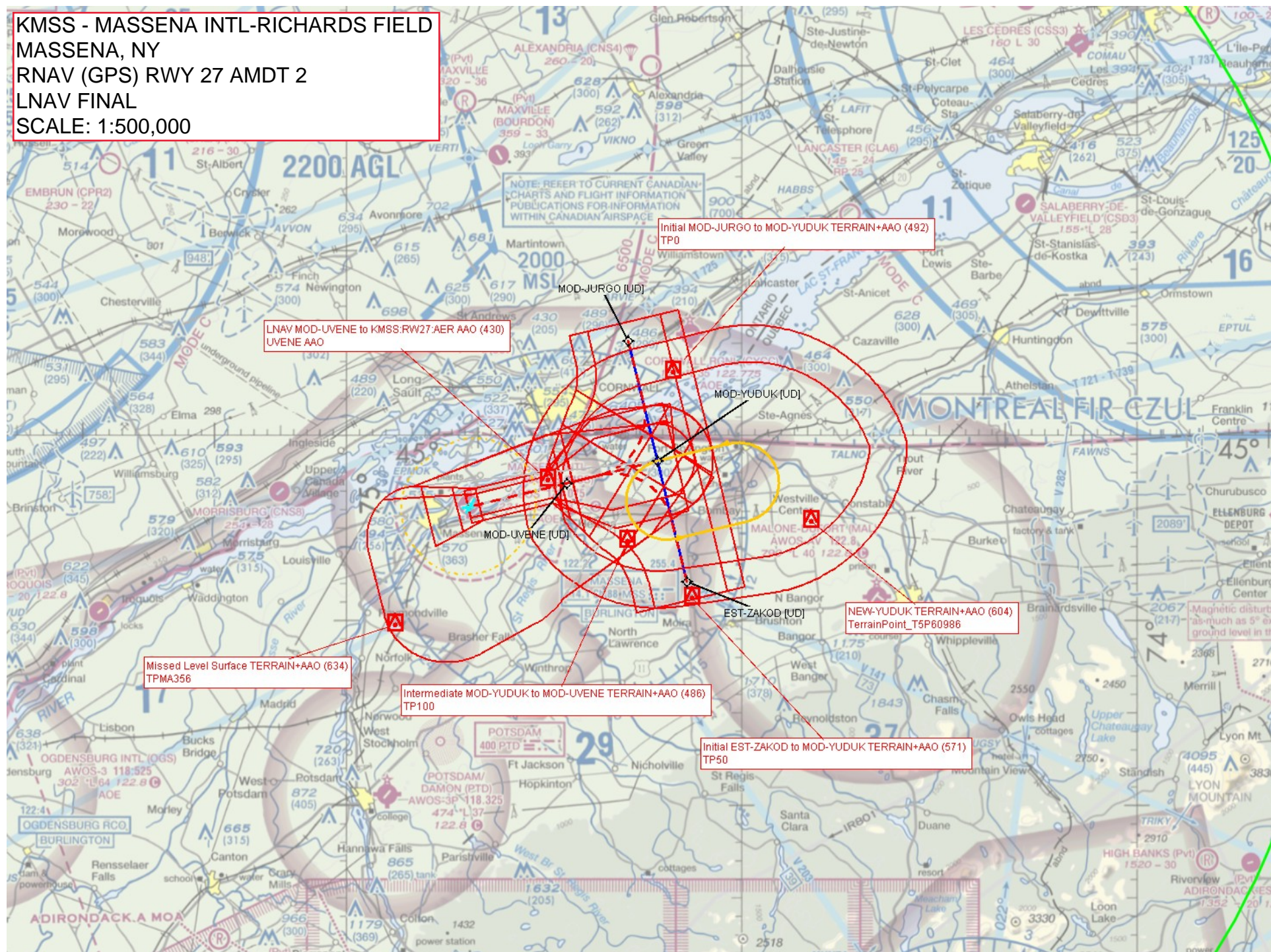
**OLD**

44°56'N-74°51'W

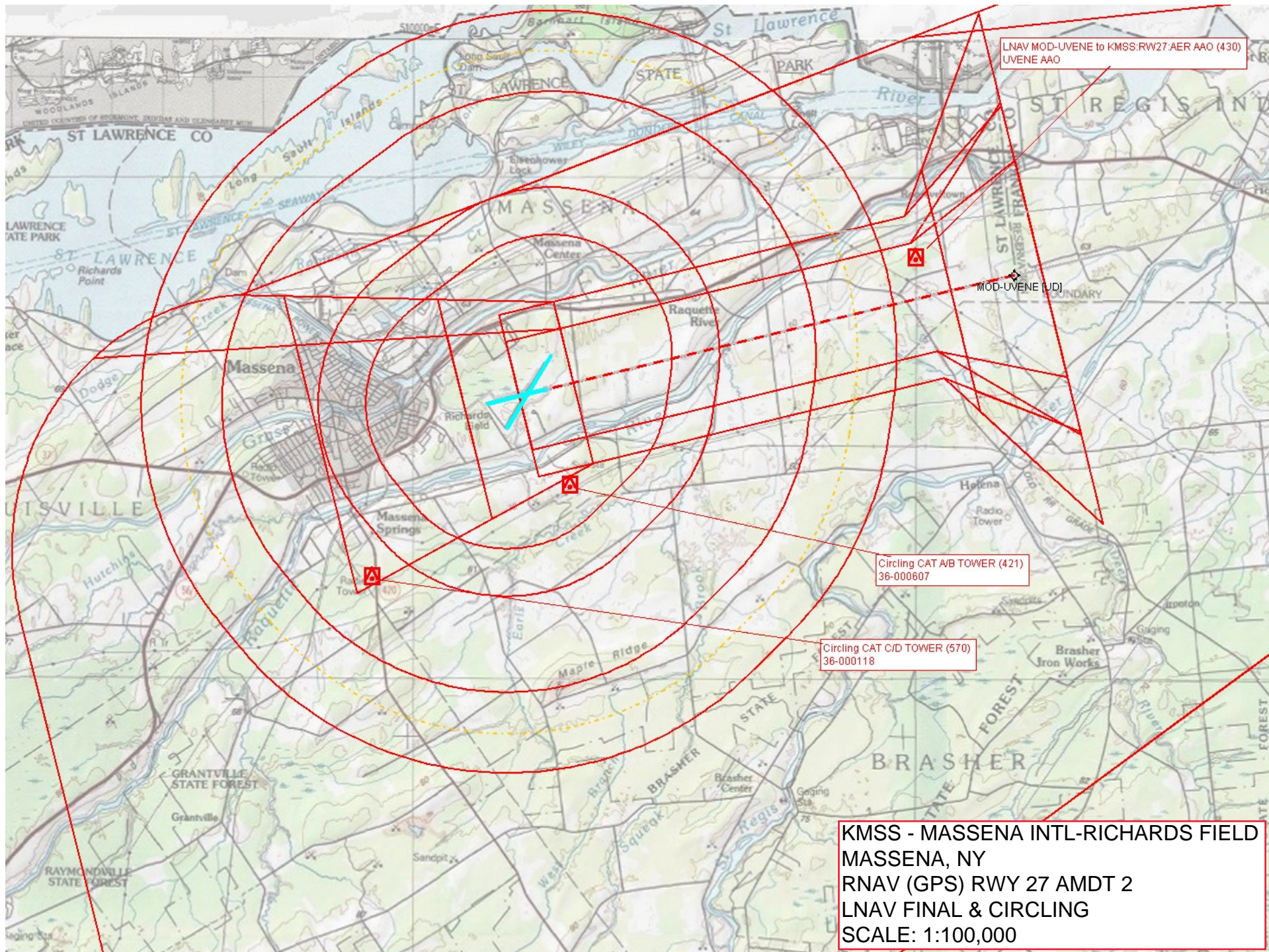
MASSENA INTL-RICHARDS FIELD (MSS)  
RNAV (GPS) RWY 27



KMSS - MASSENA INTL-RICHARDS FIELD  
MASSENA, NY  
RNAV (GPS) RWY 27 AMDT 2  
LNAV FINAL  
SCALE: 1:500,000



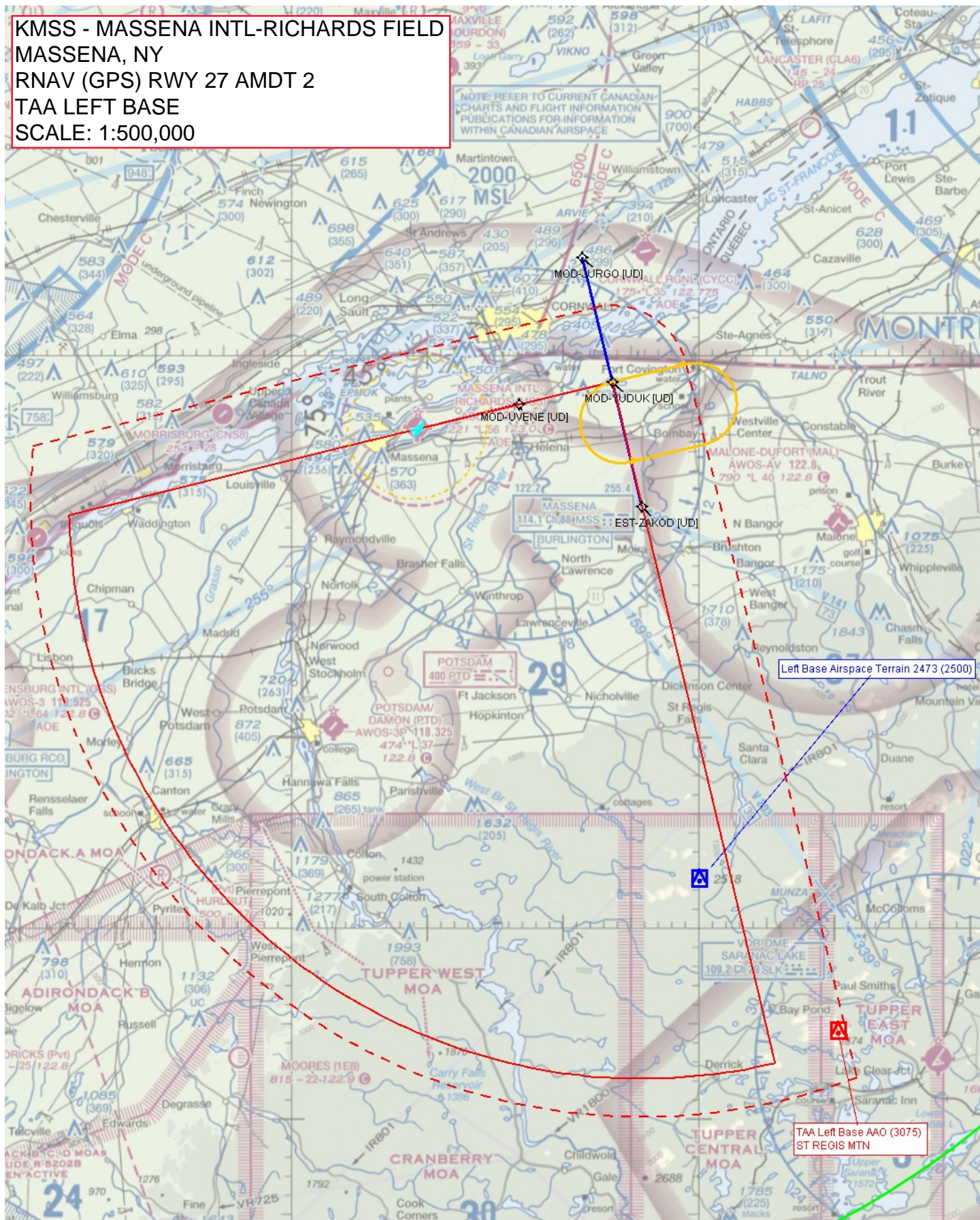




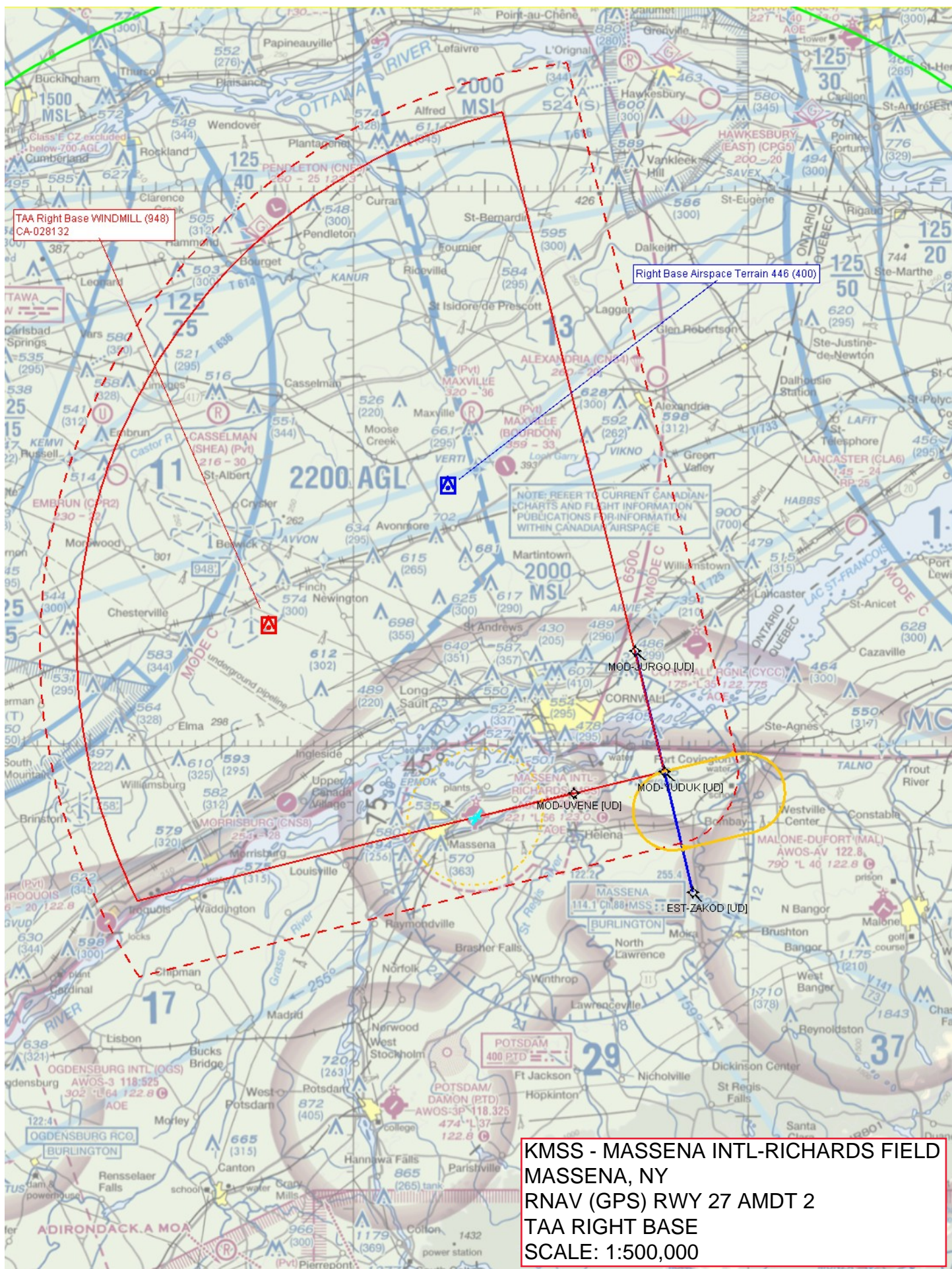


KMSS - MASSENA INTL-RICHARDS FIELD  
MASSENA, NY  
RNAV (GPS) RWY 27 AMDT 2  
TAA LEFT BASE  
SCALE: 1:500,000

NOTE: REFER TO CURRENT CANADIAN CHARTS AND FLIGHT INFORMATION PUBLICATIONS FOR INFORMATION WITHIN CANADIAN AIRSPACE

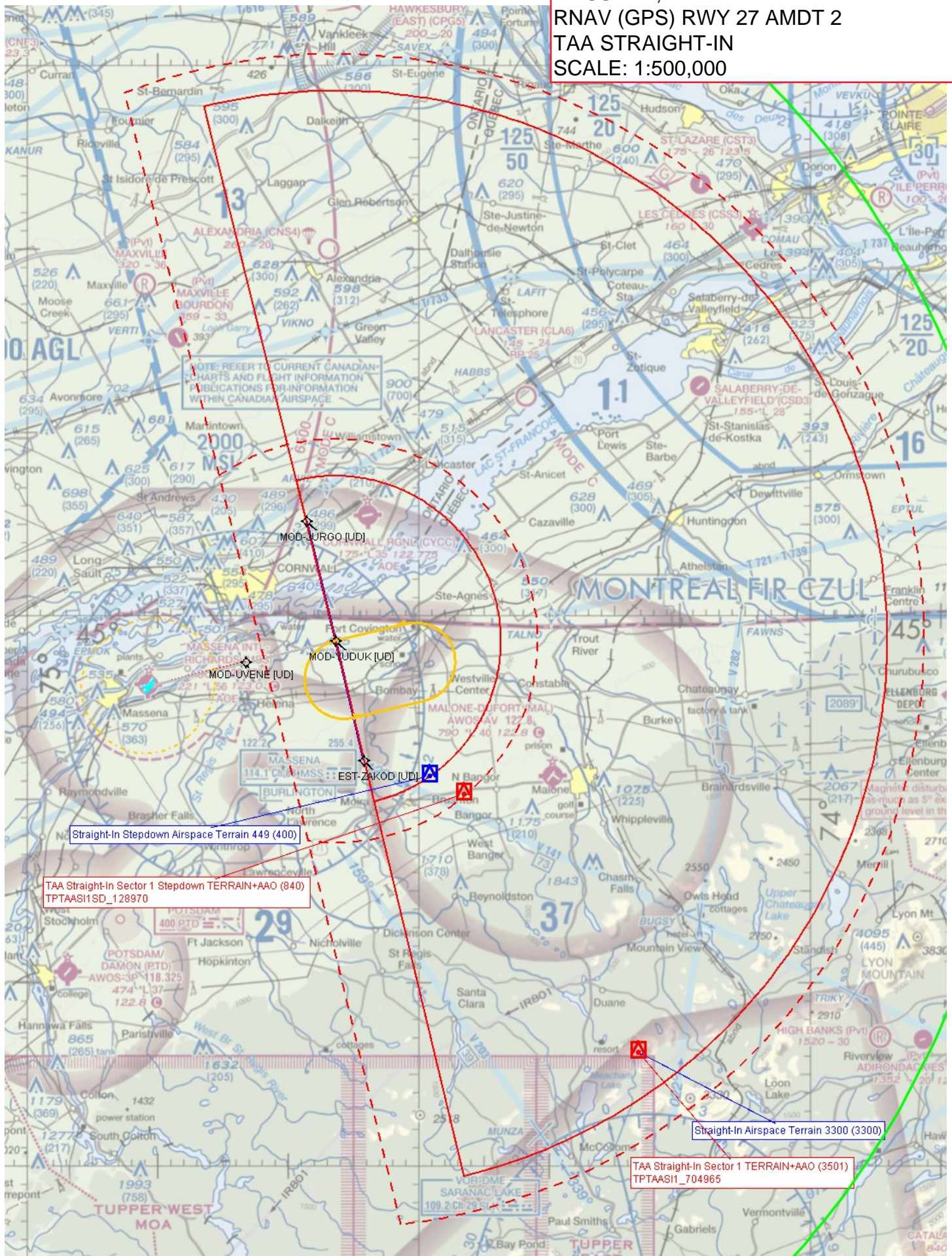








SCALE: 1:500,000





## Federal Aviation Administration Categorical Exclusion Declaration

**Date:** 11/26/19

**IFP:** Landry, Steven (Steven.L-CTR.Landry@faa.gov)

**Airport Contact:** -

**Request ID:** KMSS\_191113

**Single or Multiple Procedure:** Multiple

**Procedure Name(s):** MSS RNAV (GPS) RWY 9 MSS RNAV (GPS) RWY 23 MSS RNAV (GPS) RWY 27

**Procedure Request Description:**

Change MSS VORTAC to SENA waypoint.

**Declaration of Exclusion:**

The FAA has reviewed the above referenced proposed action and it has been determined, by the undersigned, to be categorically excluded from further environmental documentation according to FAA Order 1050.1, "Environmental Impacts: Policies and Procedures." The implementation of this action will not result in any extraordinary circumstances in accordance with FAA Order 1050.1.

**Basis for this Determination:**

This review was conducted in accordance with policies and procedures in Department of Transportation Order 5610.1, "Procedures for Considering Environmental Impacts" and FAA Order 1050.1.

**The applicable Categorical Exclusion is:**

**5-6.5.k:** Publication of existing air traffic control procedures that do not essentially change existing tracks, create new tracks, change altitude, or change concentration of aircraft on these tracks. (ATO, AVS)

**The above flight procedure has been developed within the accepted parameters.**

Concurrence/Reviewed By: Andrew Pieroni Date: November 26, 2019

Title: Environmental Protection Specialist

Approved By: Charles J Gibson Date: 11/26/2019

Title: Team Manager, ECINA