

Flight Procedures Cover Page	Task Action: FLIGHT CHECK	Task Type: IAP	Estimated Chart Date: 10/02/2025	APWS Task ID: 85A1EEBA034C47D4BD80FA555E1ECB90	APWS Project ID: EE88EB472FF04D0ABF1F321E6F58FB4F
Procedure: ILS OR LOC RWY 22 AMDT 7		Enroute: NO	Specialist: Hamilton, Robert		Agreement Number:
Airport ID: KGSP			Airport City: GREER		State: SC
Facility ID: LMJ	Facility Type: ILS	Flight Inspection Remark Type: New FC Slot			
<div>Procedure Comments:</div> <div>VORMON TO UPDATE SPA VORTAC LOCATION FOR MISSED, REMOVE FEEDER FROM SPA.</div> <div>FOR ADDITIONAL QUESTIONS CONTACT ROBERT HAMILTON, MANAGER 405-954-4608</div> <div>QUALITY 10 CHECKED</div>					

ACTIVE PROCEDURE

GREER, SOUTH CAROLINA

AL-5124 (FAA)


24081

LOC I-LMJ	APP CRS	Rwy Idg	11001
110.7	218°	TDZE	964
		Apt Elev	964

ILS or LOC RWY 22
GREENVILLE SPARTANBURG INTL (GSP)

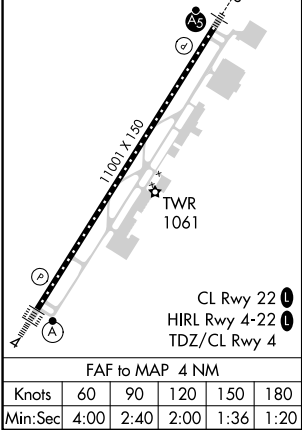
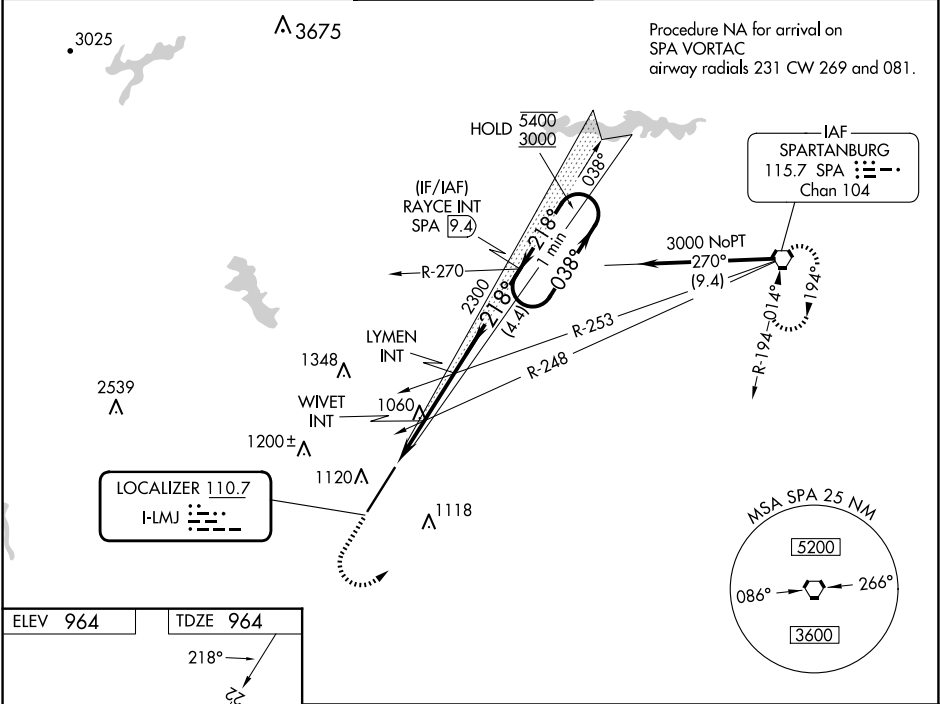
⚠ When local altimeter setting not received, use Greenville Downtown altimeter setting: increase DA to 1193; increase all MDAs 40 feet and visibility S-LOC 22 Cats C and D to RVR 3500 and Circling Cat D ¼ SM. For inop ALS, increase S-LOC 22 Cat C/D visibility to RVR 5500.


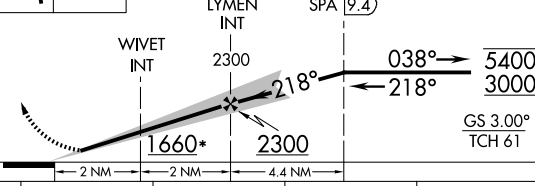

MALSR



MISSED APPROACH: Climb to 2000 then climbing left turn to 3000 direct SPA VORTAC and hold.

ATIS 134.25	GREER APP CON★ 118.8 270.275	GREER TOWER★ 120.1(CTAF) 251.15	GND CON 121.9	CLNC DEL 121.9	UNICOM 122.95
-----------------------	--	---	-------------------------	--------------------------	-------------------------



2000 ↑	3000 ↖	SPA 	VGSI and ILS glidepath not coincident (VGSI Angle 3.00/TCH 76).		One Minute Holding Pattern	
*LOC only.			LYMEN INT 2300	RAYCE INT SPA 9.4		
						
CATEGORY	A		B	C	D	
S-ILS 22	1164/24 200 (200-½)					
S-LOC 22	1320/24 356 (400-½)			1320/30 356 (400-¾)		
 CIRCLING	1440-1 476 (500-1)			1480-1½ 516 (600-1½)		1700-2¼ 736 (800-2¼)

GREER, SOUTH CAROLINA
Amdt 6 05DEC19

34°54'N-82°13'W

GREENVILLE SPARTANBURG INTL (GSP)
ILS or LOC RWY 22

SE-2, 20 MAR 2025 to 17 APR 2025

SE-2, 20 MAR 2025 to 17 APR 2025

1. FLIGHT PROCEDURE IDENTIFICATION:

GREER, SC
GREENVILLE-SPARTANBURG INTL- ROGER MILLIKEN
ILS OR LOC RWY 22

2. WAIVER REQUIRED AND APPLICABLE STANDARD:

THRESHOLD CROSSING HEIGHT (TCH) EXCEEDS THE MAXIMUM AUTHORIZED VALUE OF 60FT. 8260.3D TABLE 10-1-4.B.(1).

3. REASON FOR WAIVER (JUSTIFICATION FOR NONSTANDARD TREATMENT):

THE ESTABLISHED THRESHOLD CROSSING HEIGHT IS 61.1 FEET WHICH EXCEEDS THE MAXIMUM ALLOWABLE TCH FOR ILS CATEGORY I.

4. EQUIVALENT LEVEL OF SAFETY PROVIDED:

RUNWAY LENGTH IS 11,001 FT. THAT IS SUFFICIENT TO ACCOMMODATE THE SLIGHT INCREASE IN THE THRESHOLD CROSSING HEIGHT AND IS NOT DETRIMENTAL TO EXISTING AND FUTURE USER.

5. ALTERNATIVE ACTIONS DEEMED NOT FEASIBLE:

RELOCATION OF FACILITY NOT COST EFFECTIVE

6. COORDINATION WITH USER ORGANIZATIONS (SPECIFY):**7. SUBMITTED BY:**

DATE	OFFICE IDENTIFICATION	TITLE
	AJV-A400	MANAGER

SIGNATURE

STEVEN L. SZUKALA

8. AFS ACTIONS:

☐ APPROVED ☐ DISAPPROVED ☐ NOT REQUIRED

Digitally signed by

WARDELL HENNING

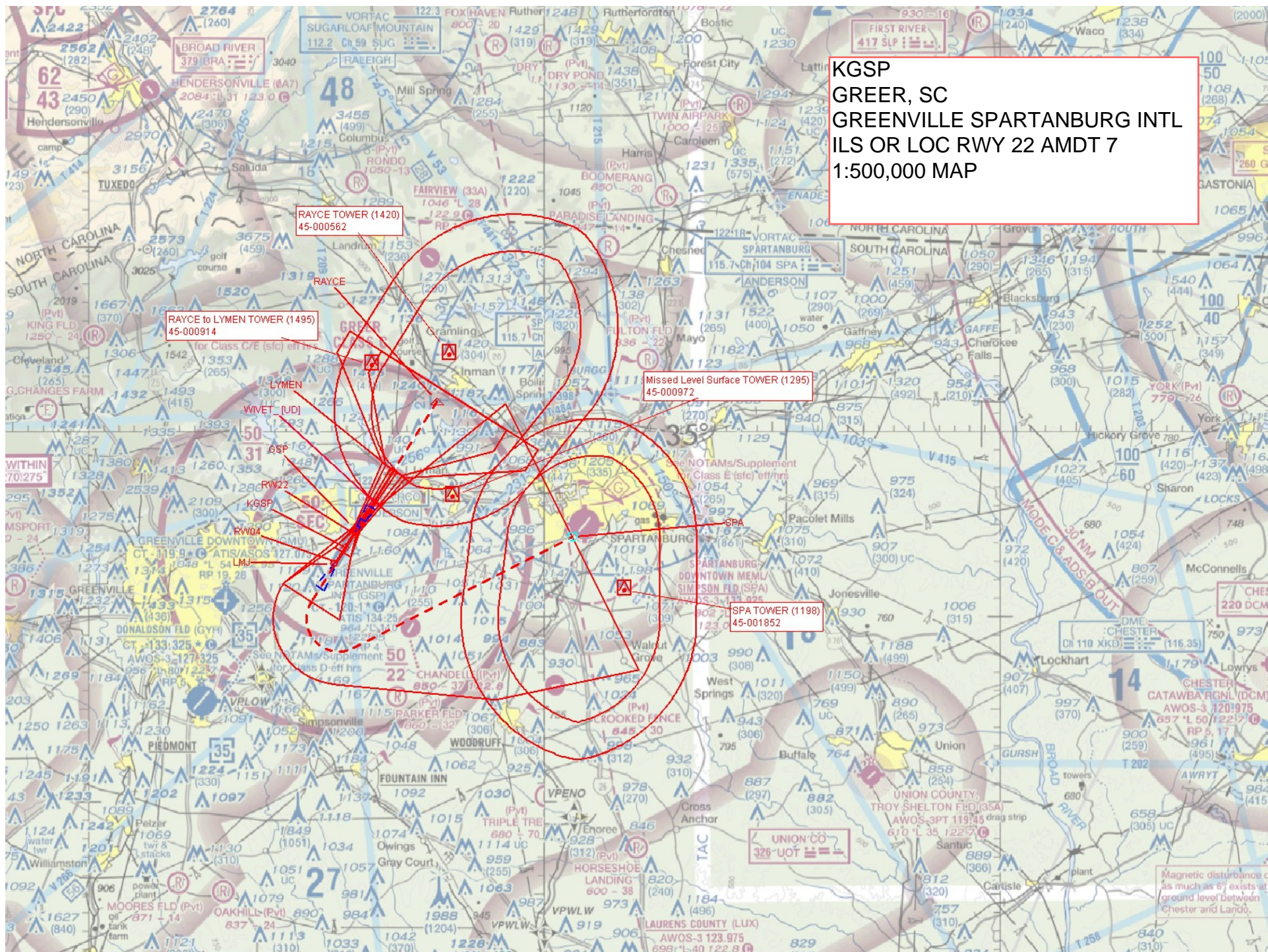
Sep 25, 2019

COMMENTS:

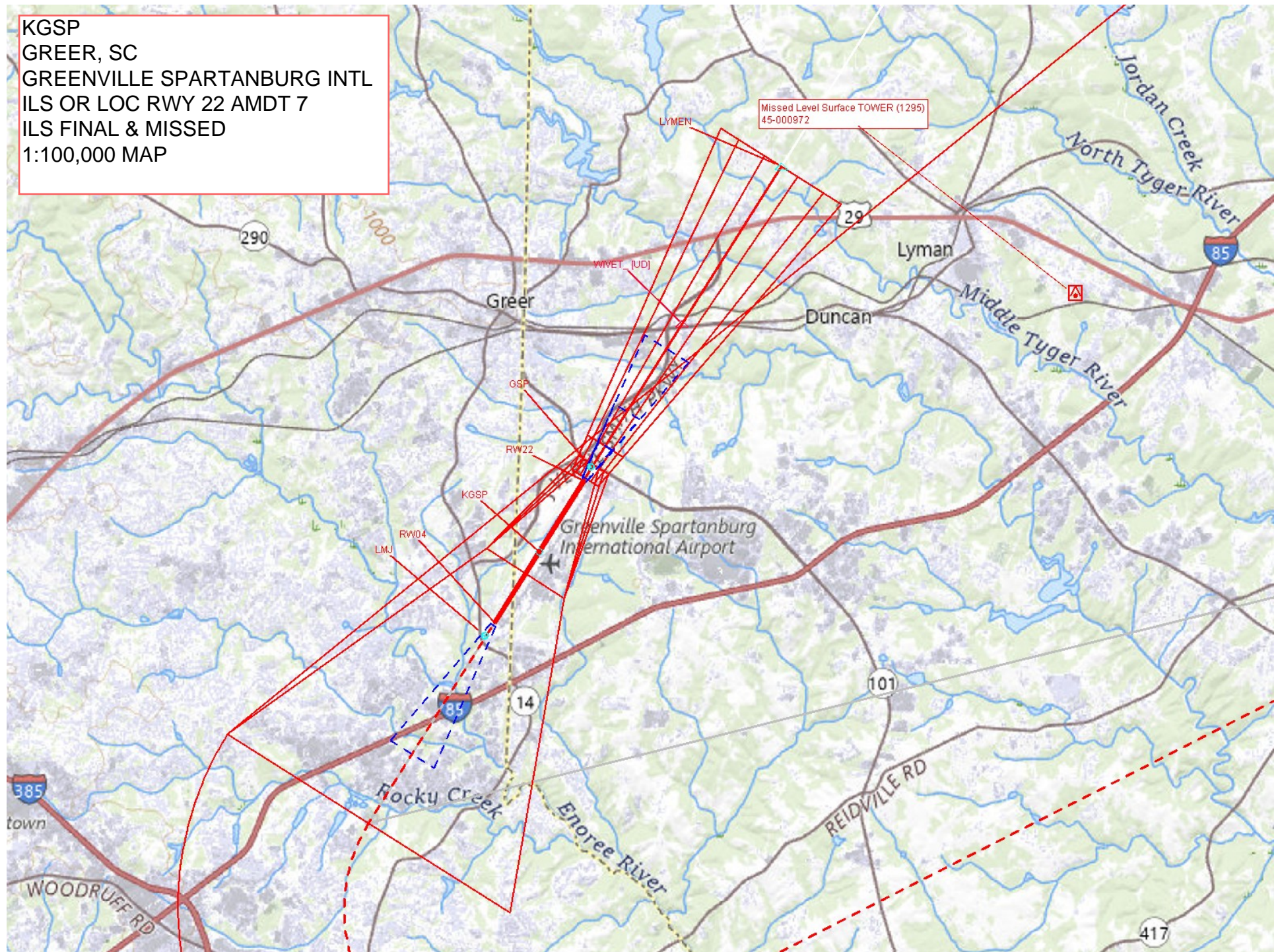
DATE	ROUTING SYMBOL	SIGNATURE
------	----------------	-----------

Wade Terrell
Signed By: Wade Terrell Wed Oct 9
2019 09:20:46 GMT-05:00:00
(Central Standard Time)

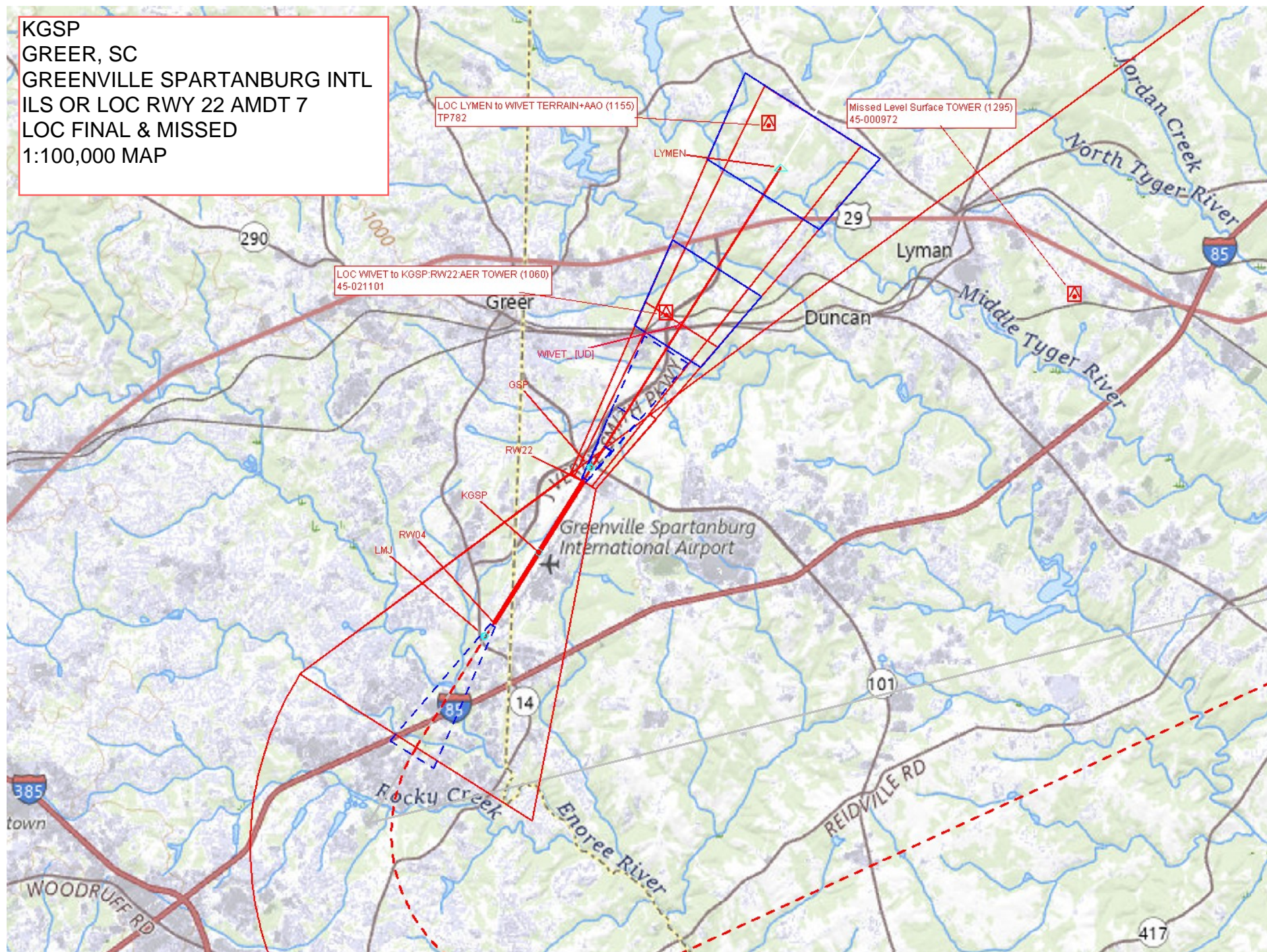
KGSP
GREER, SC
GREENVILLE SPARTANBURG INTL
ILS OR LOC RWY 22 AMDT 7
1:500,000 MAP

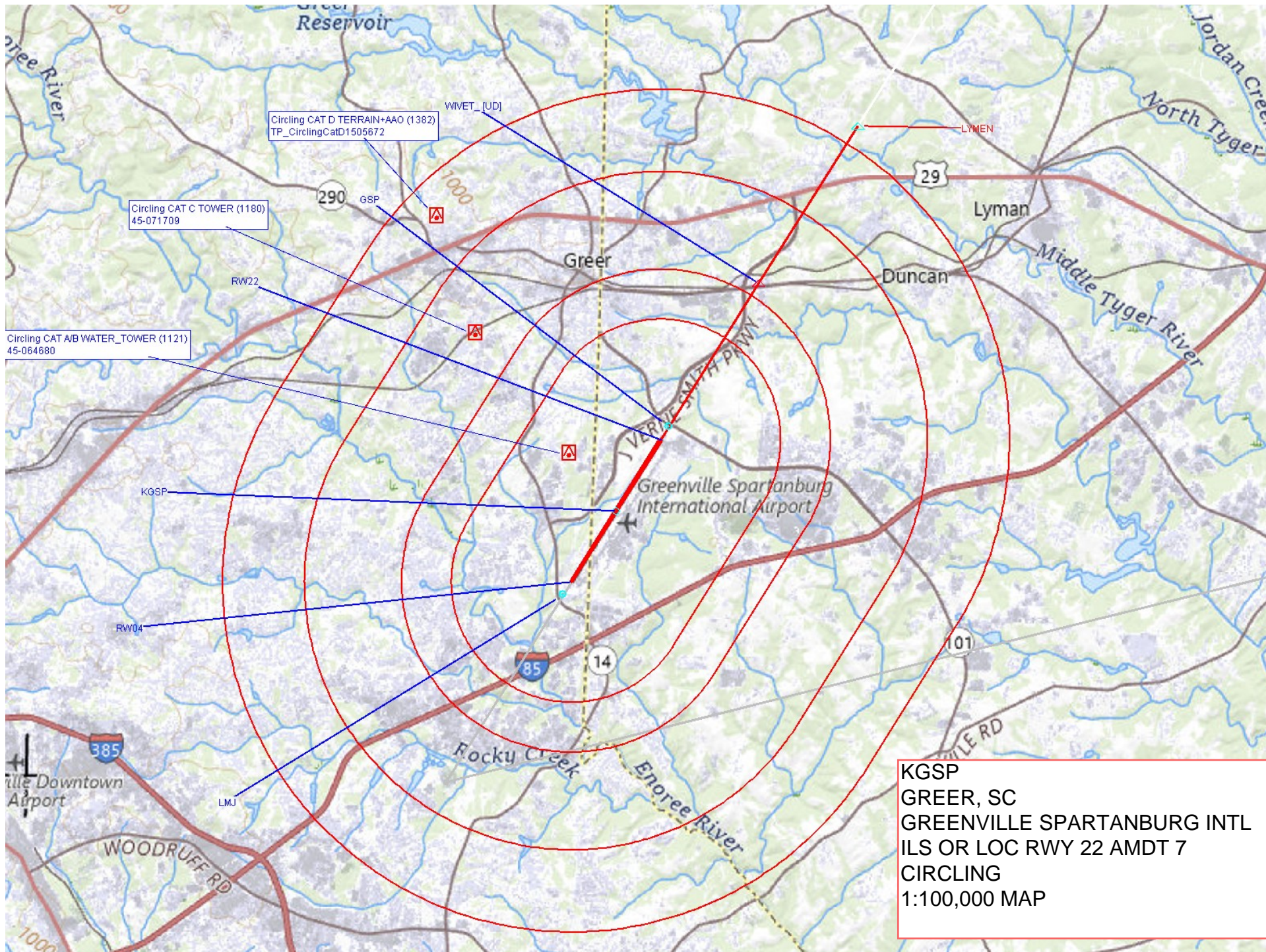


KGSP
GREER, SC
GREENVILLE SPARTANBURG INTL
ILS OR LOC RWY 22 AMDT 7
ILS FINAL & MISSED
1:100,000 MAP



KGSP
GREER, SC
GREENVILLE SPARTANBURG INTL
ILS OR LOC RWY 22 AMDT 7
LOC FINAL & MISSED
1:100,000 MAP





KGSP
GREER, SC
GREENVILLE SPARTANBURG INTL
ILS OR LOC RWY 22 AMDT 7
CIRCLING
1:100,000 MAP