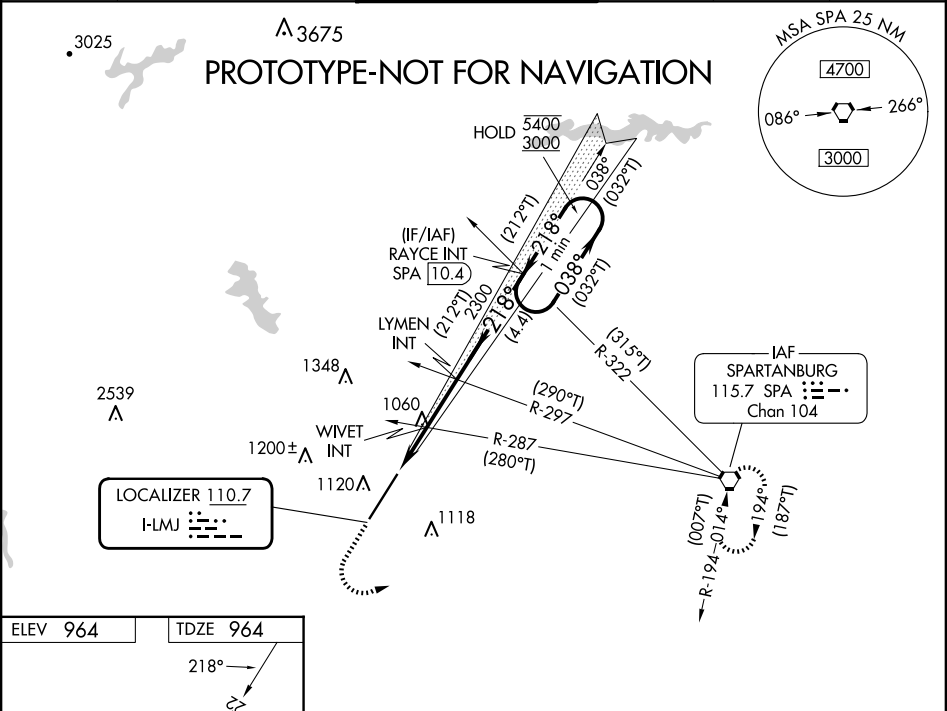


LOC I-LMJ 110.7	APP CRS 218°	Rwy Idg 11001 TDZE 964 Apt Elev 964
---------------------------	------------------------	--

ILS or LOC RWY 22
GREENVILLE SPARTANBURG INTL (GSP)

RADAR required for procedure entry.		MALSR 	MISSED APPROACH: Climb to 2000 then climbing left turn to 3000 direct SPA VORTAC and hold.
When local altimeter setting not received, use GMU altimeter setting: increase S-ILS 22 to 1193 feet; increase all MDAs 40 feet and visibility S-LOC 22 Cats C and D to RVR 3500 and Circling Cat D ¼ SM. For inop ALS, increase S-LOC 22 Cat C/D visibility to RVR 5500.			

ATIS 134.25	GREER APP CON★ 118.8 270.275	GREER TOWER★ 120.1 (CTAF) 251.15	GND CON 121.9	CLNC DEL 121.9	UNICOM 122.95
-----------------------	--	--	-------------------------	--------------------------	-------------------------



ELEV 964	TDZE 964
<p>218°</p> <p>1100 X 150</p> <p>TWR 1061</p> <p>CL Rwy 22</p> <p>HIRL Rwy 4-22</p> <p>TDZ/CL Rwy 4</p> <p>FAF to MAP 4 NM</p> <p>Knots 60 90 120 150 180</p> <p>Min:Sec 4:00 2:40 2:00 1:36 1:20</p>	
2000 3000 SPA VGSI and ILS glidepath not coincident (VGSI Angle 3.00/TCH 76).	
One Minute Holding Pattern	
<p>2000 3000 SPA</p> <p>WIVET INT 2300</p> <p>LYMEN INT 2300</p> <p>RAYCE INT SPA 10.4</p> <p>1660 2300</p> <p>218° (212°T)</p> <p>038° (032°T)</p> <p>5400 3000</p> <p>GS 3.00° TCH 61</p> <p>2 NM 2 NM 4.4 NM</p>	
CATEGORY	A B C D
S-ILS 22	1164/24 200 (200-½)
S-LOC 22	1320/24 356 (400-½) 1320/30 356 (400-¾)
CIRCLING	1440-1 476 (500-1) 1480-1½ 516 (600-1½) 1700-2¼ 736 (800-2¼)