

Flight Procedures Cover Page	Task Action: P-NOTAM	Task Type: IAP	Estimated Chart Date: 03/25/2021	APWS Task ID: 859FDAD0C7DE4EA9A604ADF0EA1E22A8	APWS Project ID: 4C9567FF48D746778DA199BCEAE5E2C6
Procedure: RNAV (GPS) RWY 36 AMDT 0A		Enroute: NO	Specialist: Lafferty, James		Agreement Number:
Airport ID: KIRS			Airport City: STURGIS		State: MI
Facility ID:	Facility Type:	Flight Inspection Remark Type:			
<p>Procedure Comments:</p> <p>P-NOTAM</p> <p>This Cancels FDC 0/8804</p> <p>Order 8260.3, chapter 2, New Circling Criteria Applied</p> <p>Contact Dave Teffeteller at 202-267-5177</p>					

QUALITY
 45
 CHECKED
 QUALITY
 Digitally signed by
MARY MCDONALD
 Dec 16, 2020
 CHECKED

WAAS CH 42915 W36A	APP CRS 004°	Rwy Idg TDZE 915 Apt Elev 924	5201 915 924
--	------------------------	---	---

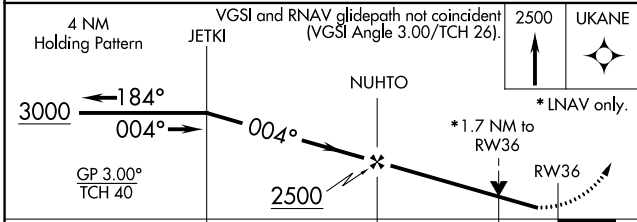
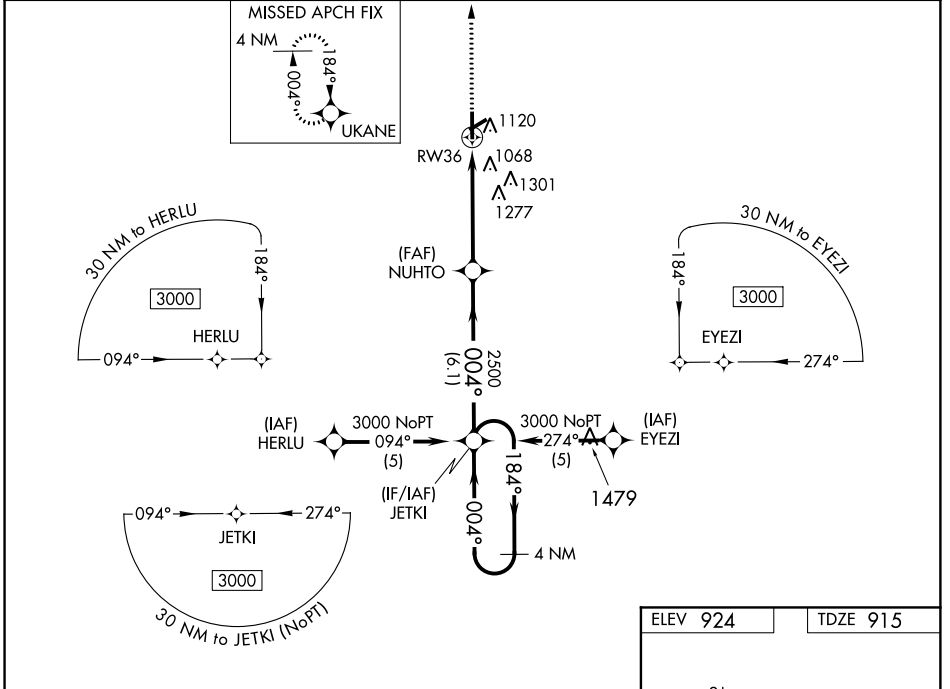
RNAV (GPS) RWY 36

KIRSCH MUNI (IRS)

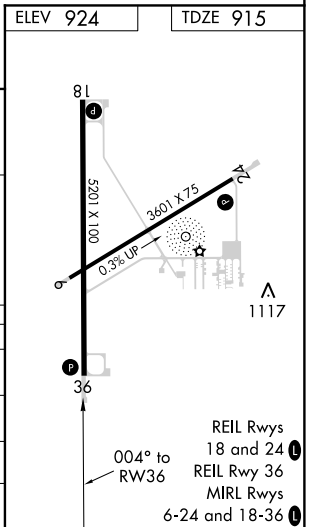
▼ For uncompensated Baro-VNAV systems, LNAV/VNAV NA below -16°C (4°F) or above 47°C (116°F). DME/DME RNP-0.3 NA. Visibility reduction by helicopters NA. When local altimeter setting not received, use Three Rivers altimeter setting and increase all DA/MDA 40 feet, increase LNAV/VNAV all Cats and LNAV Cat C/D visibility ¼ mile. VDP NA when using Three Rivers altimeter setting. Baro-VNAV NA when using Three Rivers altimeter setting.

MISSED APPROACH:
Climb to 2500 direct UKANE and hold.

AWOS-3 121.325	GREAT LAKES APP CON ★ 121.2 239.25	CLNC DEL 118.325	UNICOM 123.05 (CTAF) ①
--------------------------	--	----------------------------	----------------------------------

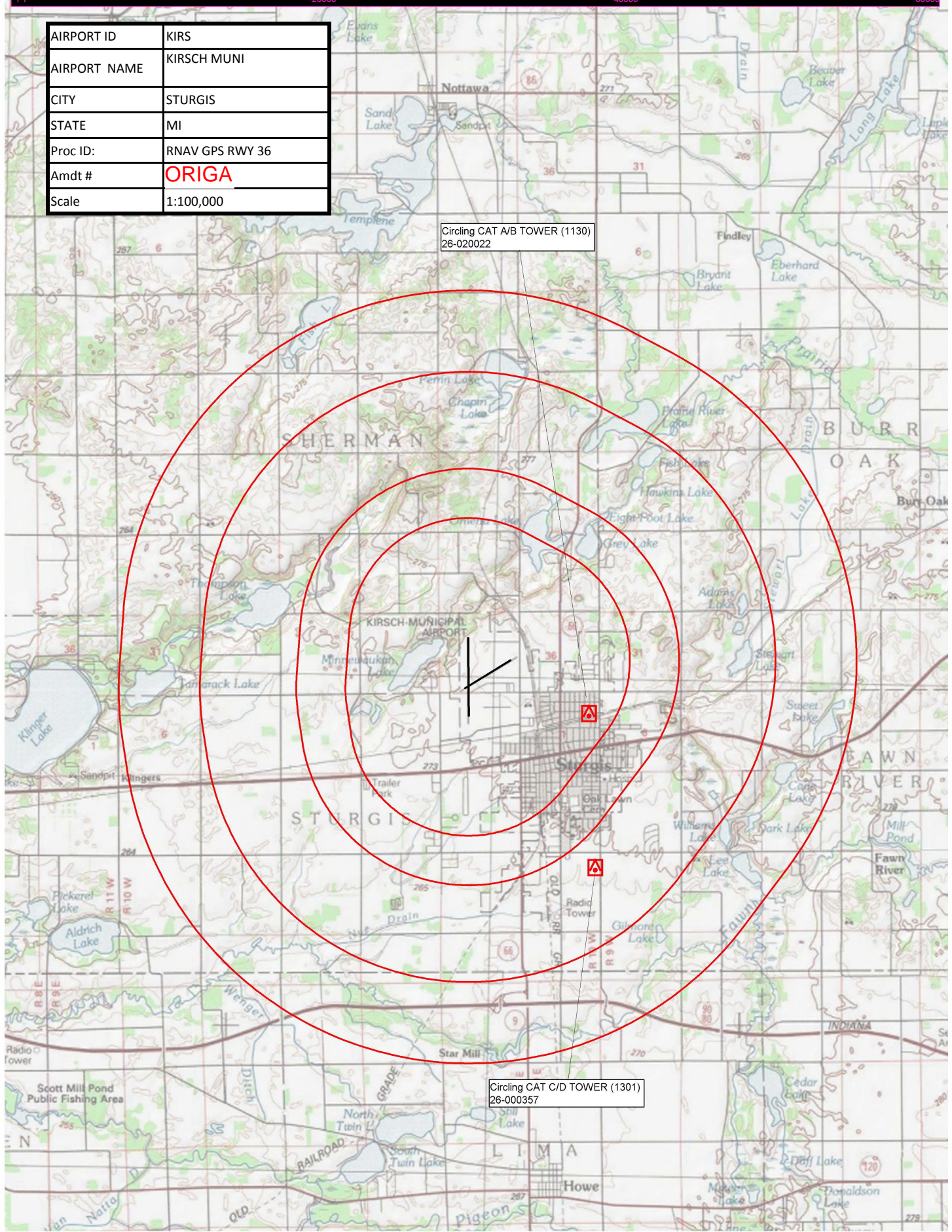


CATEGORY	A	B	C	D
LPV DA	1178-1 263 (300-1)			
LNAV/VNAV DA	1354-1½ 439 (500-1½)			
LNAV MDA	1480-1 565 (600-1)	1480-1½ 565 (600-1½)	1480-1¾ 565 (600-1¾)	
CIRCLING	1480-1 556 (600-1)	1480-1½ 556 (600-1½)	1620-2¼ 696 (700-1¼)	



AIRPORT ID	KIRS
AIRPORT NAME	KIRSCH MUNI
CITY	STURGIS
STATE	MI
Proc ID:	RNAV GPS RWY 36
Amdt #	ORIGA
Scale	1:100,000

Circling CAT A/B TOWER (1130)
26-020022



Circling CAT C/D TOWER (1301)
26-000357