

Flight Procedures Cover Page	Task Action: Abbreviated Amendment	Task Type: SID	Estimated Chart Date: 08/12/2021	APWS Task ID: 85661FC91DB540F9836ED5E486CFAF97	APWS Project ID: 0346C2FE7A9B4891B42A296CF67480FF
Procedure: JOHKR (RNAV) TWO		Enroute: YES	Specialist: Barnes, Kellie		Agreement Number:
Airport ID: KLAS			Airport City: LAS VEGAS		State: NV
Facility ID:	Facility Type:	Flight Inspection Remark Type:			
<div>Procedure Comments:</div> <div>ABBREVIATED AMENDMENT</div> <div>PROCESSED IAW AIRCRAFT OPERATIONS GROUP (AJF-10) MEMO, APRIL 29, 2020 SUBJECT: FLIGHT INSPECTION REVIEW NOT REQUIRED.</div> <div>CONTACT ALLAN WILL 405-954-6103</div> <div>06/28/21: THIS IS A CORRECTED COPY OF THE FORM APPROVED ON 04/21/21.</div> <div>1. CHANGED DPDLC TO CPDLC IN COMMUNICATIONS</div>					



TOP ALTITUDE:
FL190

TAKEOFF MINIMUMS

Rwy 1L: Standard with minimum climb of 514' per NM to 4900.

Rwy 1R: Standard with minimum climb of 526' per NM to 4800.

Rwys 8L/R: Standard with minimum climb of 500' per NM to 2682, then 219' per NM to 6300.

Rwys 19L/R: Standard with minimum climb of 500' per NM to 2682, then 334' per NM to 8900.

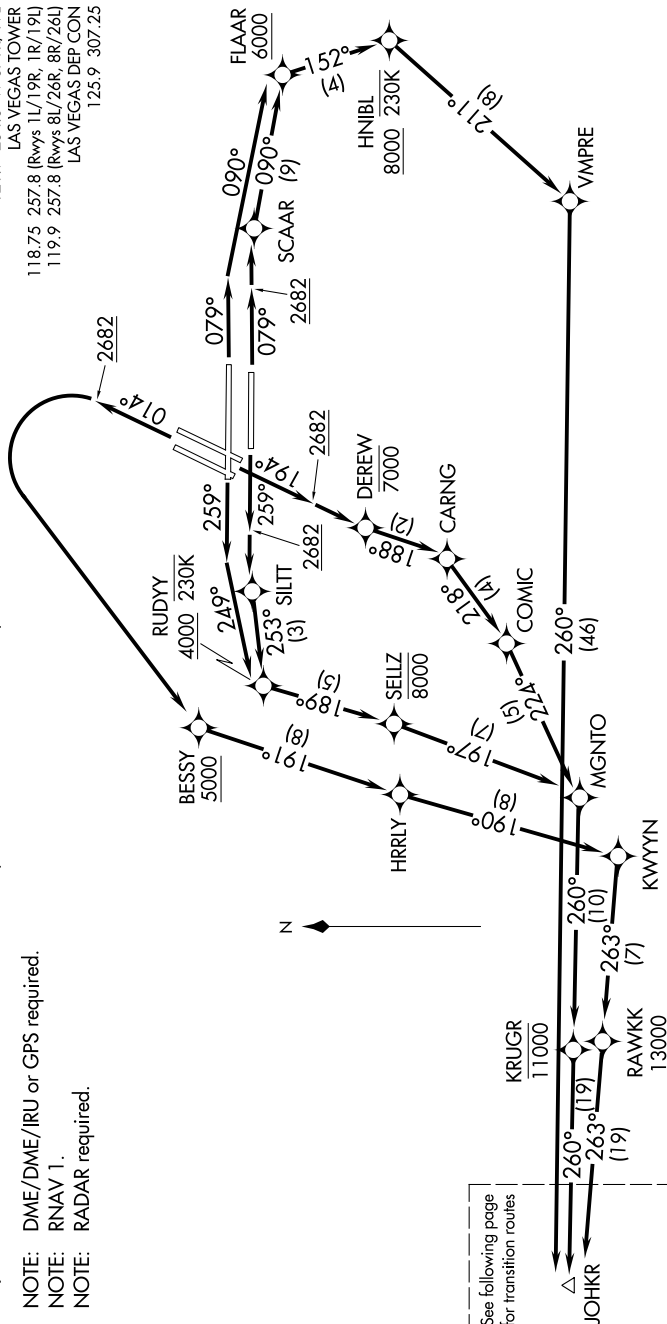
Rwys 26L/R: Standard with minimum climb of 500' per NM to 2682, then 345' per NM to 8900.

NOTE: DME/DME/IRU or GPS required.

NOTE: RNAV 1.

NOTE: RADAR required.

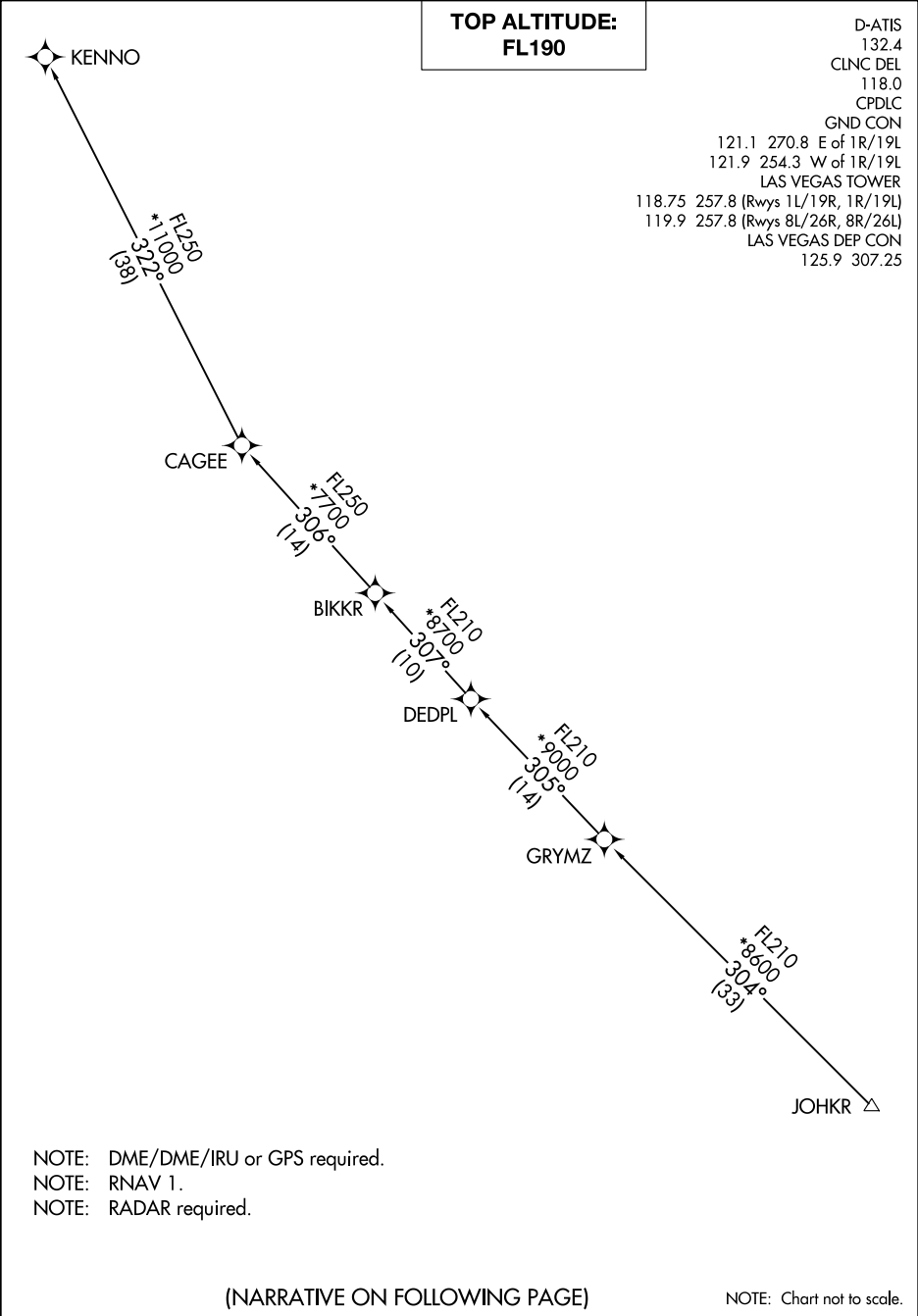
D-ATIS	132.4
CUNIC DEL	118.0
CPDLC	121.1
GND CON	270.8
E of 1R/19L	121.9
W of 1R/19L	254.3
LAS VEGAS TOWER	118.75
1L/19R, 1R/19L	119.9
8R/26R, 8R/26L	125.9
LAS VEGAS DEP CON	307.25



(CONTINUED ON FOLLOWING PAGE)

NOTE: Chart not to scale.

SW-4, 25 MAR 2021 to 22 APR 2021



SW-4, 25 MAR 2021 to 22 APR 2021

SW-4, 25 MAR 2021 to 22 APR 2021