

Flight Procedures Cover Page	Task Action: Amendment	Task Type: IAP	Estimated Chart Date: 12/26/2024	APWS Task ID: 85330998DE754CE78BE147CFFCE905C8	APWS Project ID: 9EA3160472A6447CBB907E4B694EB010
Procedure: RNAV (GPS) RWY 27 AMDT 0D		Enroute: NO	Specialist: Johnson, Daniel		Agreement Number:
Airport ID: KCVX			Airport City: CHARLEVOIX		State: MI
Facility ID:	Facility Type:	Flight Inspection Remark Type:			
<div>Procedure Comments:</div> <div>UTILIZED ACTIVE AIRNAV DATA FOR KCVX RWY 27.</div> <div>INCORPORATED P-NOTAM 2/3561.</div> <div>REMOVED GLR VOR/DME INITIAL LEG.</div> <div>PROCESSED IAW TECHNICAL SUPPORT GROUP (AJF-17) MEMO DATED 07/07/2021 GUIDANCE FOR PROCEDURAL CHANGES REQUIRING FLIGHT INSPECTION/VALIDATION.</div> <div>CONTACT ROBERT HAMILTON: AJV-433 405-954-4608</div> <div><div>QUALITY 9 CHECKED BEGUE</div><div>QUALITY 10 CHECKED</div></div>					

RNAV (GPS) RWY 27
CHARLEVOIX MUNI (CVX)

T	Circling NA to Rwy 4 and 22.
A	Rwy 27 helicopter visibility reduction below $\frac{3}{4}$ SM NA.

MISSED APPROACH: Climbing left turn to 3000 direct COKOS and hold.

AWOS-3P 120.0	MINNEAPOLIS CENTER 134.6 354.05	UNICOM 122.8 (CTAF) 0
-------------------------	---	--

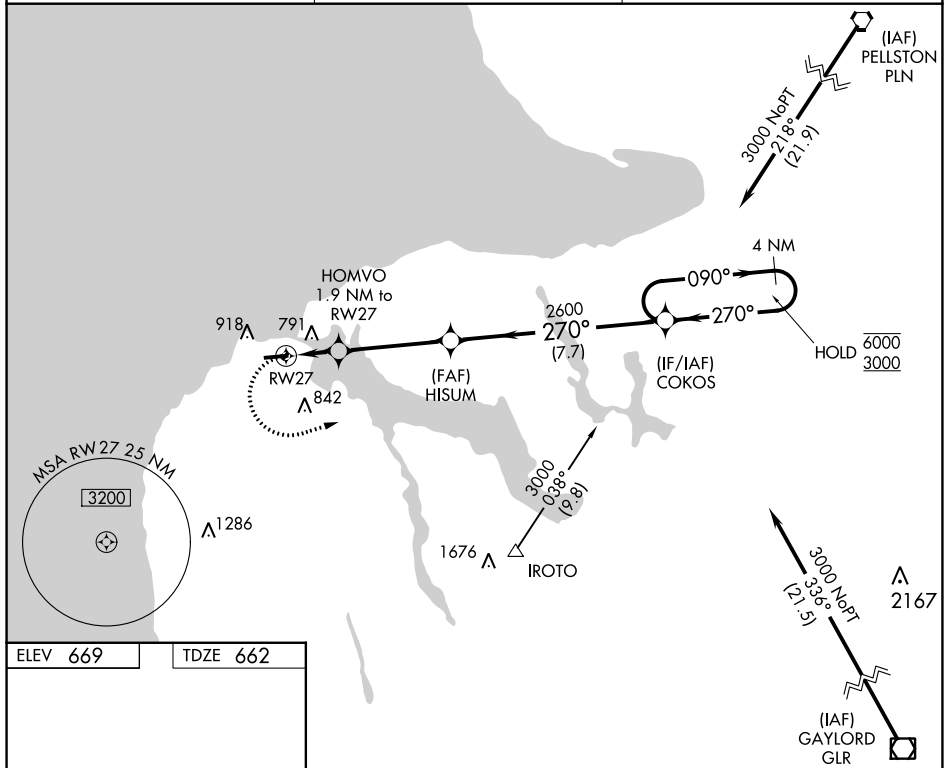


Diagram illustrating the RW27 approach procedure. The approach is a 3.05° TCH 45. Key points include RW27, HOMVO (1.9 NM to RW27), HISUM, and COKOS (4 NM Holding Pattern). Altitudes are 1300 and 2600. A table at the bottom provides LNAV MDA and CIRCLING altitudes for categories A, B, C, and D.

CATEGORY	A		B		C	D
LNAV MDA	1100-1	438 (500-1)	1100-1¼	438 (500-1¼)	1100-1½	438 (500-1½)
CIRCLING	1280-1	611 (700-1)	1280-1¾	611 (700-1¾)	1360-2¼	691 (700-2¼)

EC-1, 18 APR 2024 to 16 MAY 2024