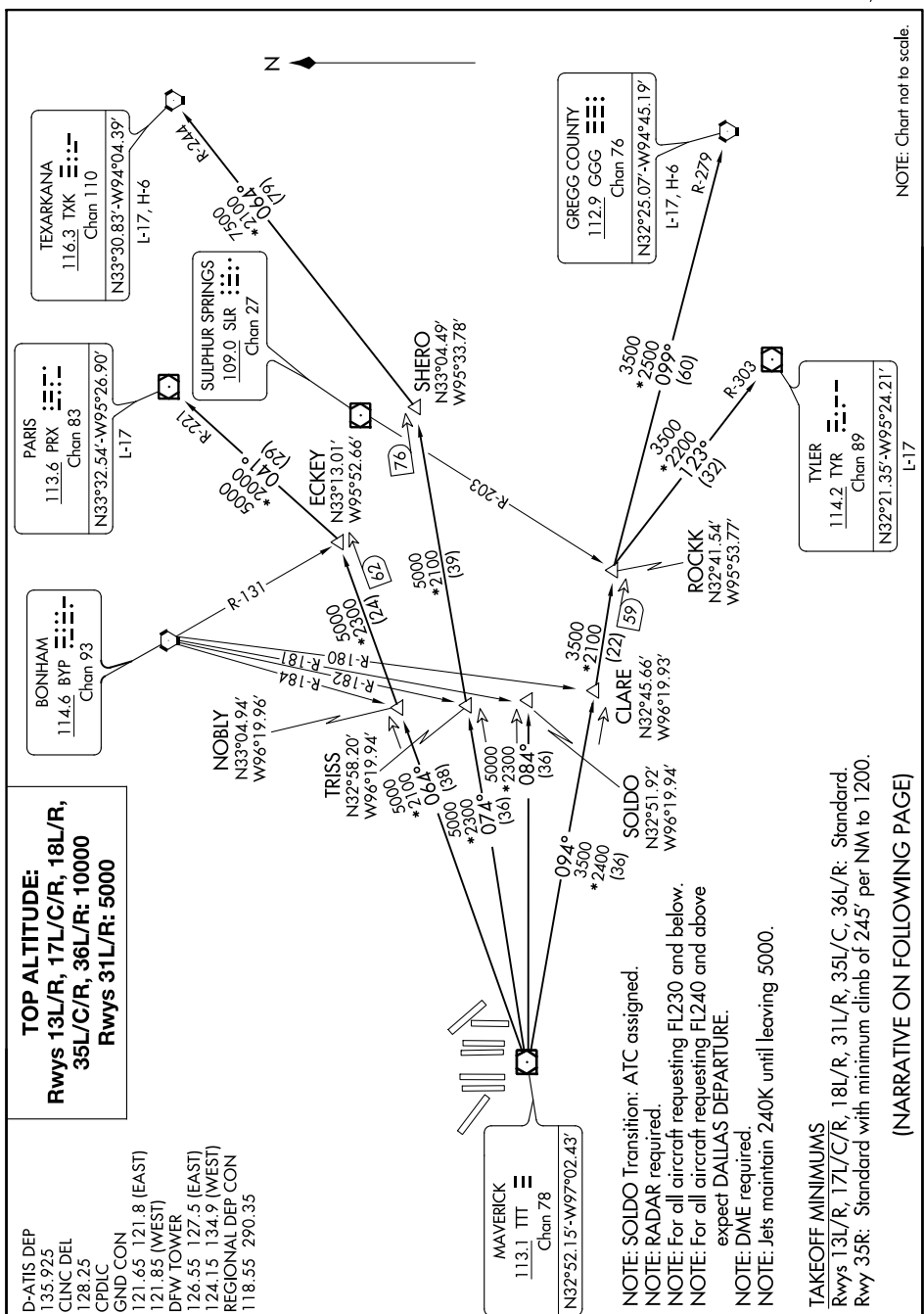


Flight Procedures Cover Page	Task Action: Amendment	Task Type: SID	Estimated Chart Date: 12/29/2022	APWS Task ID: 850CC55DC35F470F9862A7439A914C9C	APWS Project ID: C7E7AD6EB16149659A8C4582A80D43CE
Procedure: SID GARLAND FOUR		Enroute: YES	Specialist: Tuttle, Judith		Agreement Number:
Airport ID: KDFW			Airport City: DALLAS-FORT WORTH		State: TX
Facility ID:	Facility Type:	Flight Inspection Remark Type:			
<p>Procedure Comments: SLR VORMON - REMOVED ALL SLR VOR/DME ASSOCIATIONS.</p> <p>ACTIVE DATA USED FOR AMENDMENT.</p> <p>PROCESSED IAW TECHNICAL SUPPORT GROUP (AJF-17) MEMO DATED 07/07/2021 SUBJECT: GUIDANCE FOR PROCEDURAL CHANGES REQUIRING FLIGHT INSPECTION/VALIDATION.</p> <p>CONTACT JOHNNIE BAKER: (405) 954-5148.</p> <p><i>Digitally signed by</i> ERIC N SUSKI Aug 17, 2022</p>					

QUALITY
22
CHECKED

8.4.2022
BD

QUALITY
38
CHECKED





DEPARTURE ROUTE DESCRIPTION

TAKEOFF RUNWAYS 31L/R: Climb on assigned heading, maintain 5000 thence. . .

TAKEOFF RUNWAYS 13L/R, 17L/C/R, 18L/R, 35L/C/R, 36L/R: Climb on assigned heading, maintain 10000 thence. . .

. . .on vectors to appropriate route, unless otherwise advised maintain assigned altitude and expect filed altitude 10 minutes after departure.

GREGG COUNTY TRANSITION (GARL3.GGG): From over TTT VOR/DME on TTT R-094 to ROCKK, then on GGG R-279 to GGG VORTAC.

PARIS TRANSITION (GARL3.PRX): From over TTT VOR/DME on TTT R-064 to ECKEY, then on PRX R-221 to PRX VOR/DME.

SOLDO TRANSITION (GARL3.SOLDO): From over TTT VOR/DME on TTT R-084 to SOLDO.

TEXARKANA TRANSITION (GARL3.TXK): From over TTT VOR/DME on TTT R-074 to SHERO, then on TXK R-244 to TXK VORTAC.

TYLER TRANSITION (GARL3.TYR): From over TTT VOR/DME on TTT R-094 to ROCKK, then on TYR R-303 to TYR VOR/DME.

SC-2, 19 MAY 2022 to 16 JUN 2022

SC-2, 19 MAY 2022 to 16 JUN 2022