

Flight Procedures Cover Page	Task Action: P-NOTAM	Task Type: IAP	Estimated Chart Date: 01/25/2024	APWS Task ID: 84EFB1AA4A2C459DA6C43E12720EA641	APWS Project ID: 66B709FFB85A4E92AD606D34414E81B6
Procedure: RNAV (GPS) RWY 3 AMDT 1D		Enroute: NO	Specialist: Larue, Derek		Agreement Number:
Airport ID: P33			Airport City: WILLCOX		State: AZ
Facility ID:	Facility Type:	Flight Inspection Remark Type:			
<div>Procedure Comments:</div> <div>ACTIVE DATA USED.</div> <div>PROCESSED IAW TECHNICAL SUPPORT GROUP (AJF-17) MEMO DATED 07/07/2021 GUIDANCE FOR PROCEDURAL CHANGES REQUIRING FLIGHT INSPECTION/VALIDATION</div> <div>CONTACT JOHN BORDY 405-954-0980</div> <div><div>09/15/2023</div><div>QUALITY 14 CHECKED</div></div>					

WILLCOX, ARIZONA

AL-85 (FAA)

23110

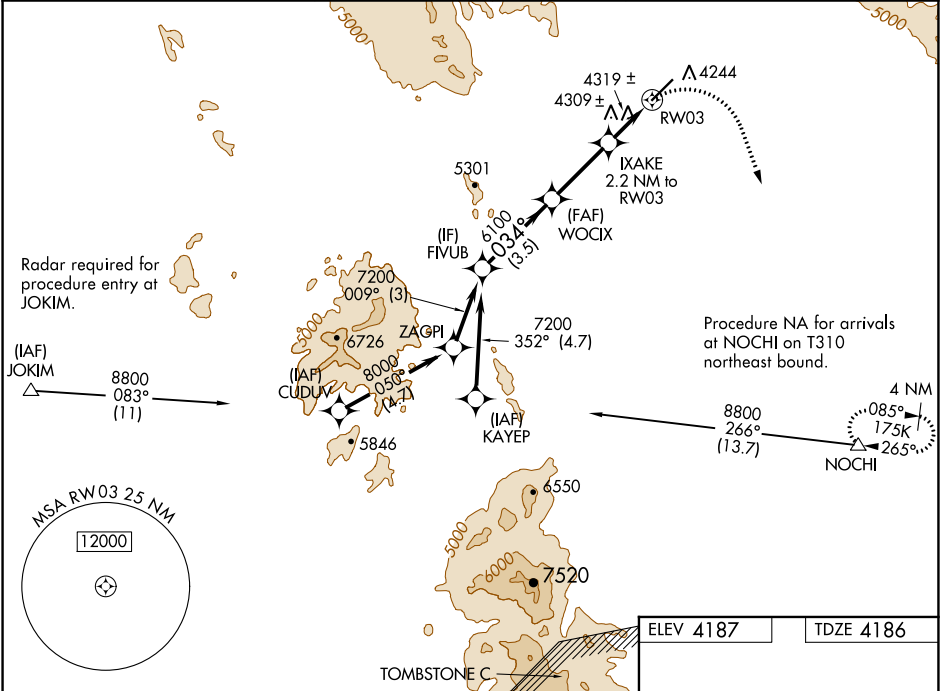
APP CRS	Rwy Idg	6095
034°	TDZE	4186
	Apt Elev	4187

OLD

RNAV (GPS) RWY 3
COCHISE COUNTY (P33)

Obtain local altimeter setting on CTAF; when not received, use Douglas Bisbee altimeter setting. DME/DME RNP-0.3 NA. VDP NA with Douglas Bisbee altimeter setting.	MISSED APPROACH: Climbing right turn to 8800 direct NOCHI and hold, continue climb-in-hold to 8800.
--	---

AWOS-3PT 119.025	ALBUQUERQUE CENTER 134.45 327.15	UNICOM 122.8 (CTAF) 0
---------------------	-------------------------------------	--------------------------



	FIVUB	WOCIX	IXAKE	NOCHI
	7200	6100	5040	8800
	034°	3.50°	0.9 NM to RW03	△
	3.5 NM	2.9 NM	1.3 NM	0.9 NM
CATEGORY	A	B	C	D
LNAV MDA	4560-1	374 (400-1)		NA
CIRCLING	4600-1	4660-1		NA
	413 (500-1)	473 (500-1)		
DOUGLAS BISBEE ALTIMETER SETTING MINIMUMS				
LNAV MDA	4680-1	494 (500-1)		NA
CIRCLING	4720-1	4780-1		NA
	533 (600-1)	593 (600-1)		

WILLCOX, ARIZONA
Amdt 1C 21APR22

32°15'N-109°54'W

COCHISE COUNTY (P33)
RNAV (GPS) RWY 3

SW-4, 10 AUG 2023 to 07 SEP 2023

SW-4, 10 AUG 2023 to 07 SEP 2023