

Flight Procedures Cover Page	Task Action: FLIGHT CHECK	Task Type: IAP	Estimated Chart Date: 04/17/2025	APWS Task ID: 8418D2550FA249A59C621DF932C0BC2A	APWS Project ID: 2A82466ED40C459A911E83E9DB39E89A
Procedure: RNAV (GPS) RWY 3 AMDT 0A		Enroute: NO	Specialist: Juoni, Joshua		Agreement Number:
Airport ID: 49A			Airport City: ELLIJAY		State: GA
Facility ID:	Facility Type:	Flight Inspection Remark Type: New FC Slot			
<div>Procedure Comments:</div> <div>UTILIZED ACTIVE DATA FOR K49A RWY 3.</div> <div>CLEARED NOTAM 2/6137.</div> <div>NEW CONTROLLING OBSTACLES LNAV/VNAV MA, LNAV FINAL.</div> <div>CONTACT ERIC SUSKI: AJV-A431, 405-954-7331.</div> <div>QUALITY 9 CHECKED BEGUE</div> <div>QUALITY 18 CHECKED</div>					

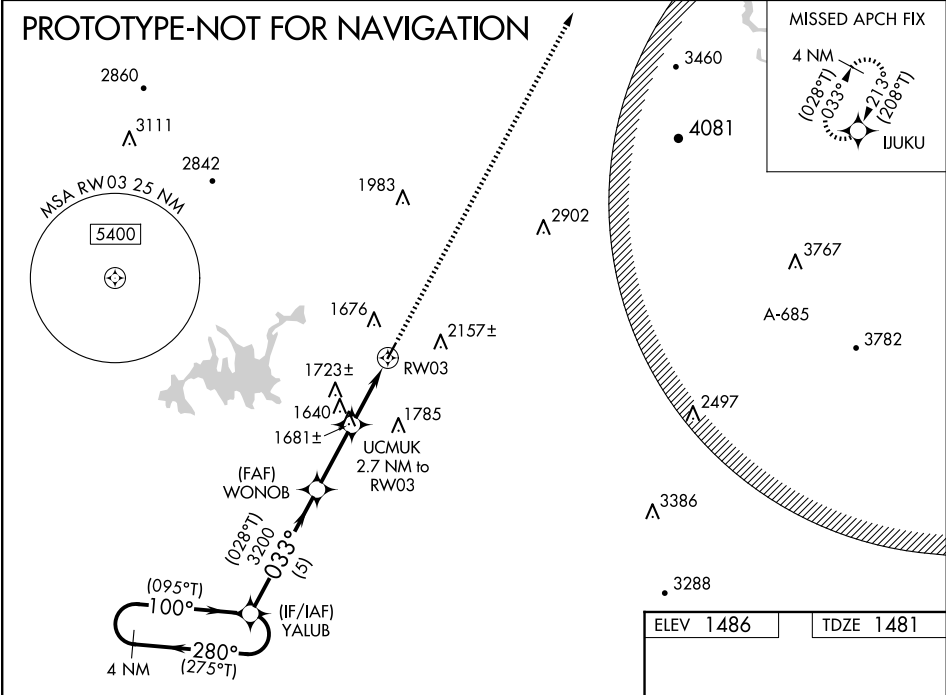
FIPC BASIC FORM							
PROCEDURE: RNAV (GPS) RWY 3 AMDT 0A			AIRPORT NAME: GILMER COUNTY		AIRPORT ID: K49A	SPECIAL CONTROL NO: AG-12-283-24	
FAC ID: K49A03		CITY: ELLIJAY			ST: GA	ORIG CHART DATE: 04/17/2025	
DFL TYPE: PROC/S	THIRD PARTY: <input type="checkbox"/> YES	EST. TIME ON SITE: 0.4	REIMB. NUMBER:		PTS TASK ID: 8418D2550FA249A59C621DF932C0BC2A		
PREFLIGHT NOTES							
REVIEWER:					DATE:		
COMMENTS:					CHECK ONE:		
					<input type="checkbox"/> FLT CK REQ <input type="checkbox"/> NFCR <input type="checkbox"/> REJECT		
							YES
					CPV COMPLETE?		X
PROCEDURE RESULTS							
INSPECTION DATE: 02/01/2025		CREW #: VN364	N #: N77	INSTRUMENT PROCEDURE STATUS: <input checked="" type="checkbox"/> SAT <input type="checkbox"/> SAT W/CHANGES <input type="checkbox"/> UNSAT		ARINC CODING: <input checked="" type="checkbox"/> SAT <input type="checkbox"/> SAT/GOLD <input type="checkbox"/> UNSAT	
FLIGHT INSPECTOR SIGNATURE: kevin riese @ 02/01/2025 17:36			PRINTED NAME: RIESE, KEVIN JOHN				NOTAM INITIATED? <input type="checkbox"/> YES <input checked="" type="checkbox"/> NO
FLIGHT INSPECTOR REMARKS: Satisfactory.							
IN-FLIGHT OBSTACLE REPORT							
OBSTRUCTION ID #:	COORDINATES OR LOCATION:		GNSS ALTITUDE (MSL):		BAROMETRIC ALTITUDE (MSL):		HEIGHT ABOVE GROUND LEVEL:

WAAS CH 45941 W03A	APP CRS 033°	Rwy Idg 3507 TDZE 1481 Apt Elev 1486
--	------------------------	---

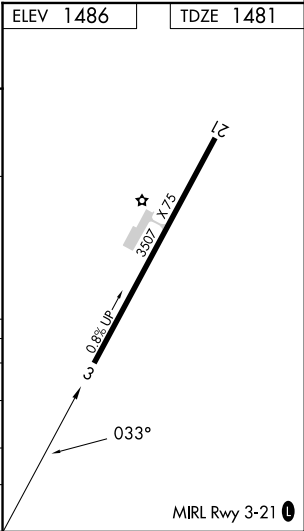
RNAV (GPS) RWY 3
GILMER COUNTY (49A)

RNP APCH - GPS.	MISSED APPROACH: Climb to 5700 direct IJUKU and hold, continue climb-in-hold to 5700.
▼ ▲ Procedure NA at night. Rwy 3 helicopter visibility reduction below 1 SM NA. For uncompensated Baro-VNAV systems, LNAV/VNAV NA below -17°C or above 54°C.	

AWOS-3 118.075	ATLANTA CENTER 133.1 342.425	UNICOM 123.0 (CTAF)
--------------------------	--	-------------------------------



4 NM Holding Pattern		YALUB	WONOB	UCMUK	5700	IJUKU
6000 3200 GP 3.00° TCH 51		(275°T) 280° 100° (095°T)	(028°T) 033° 3200	2.7 NM to RWY 3 2360	↑	★
		5 NM	2.6 NM	2.7 NM	RWY 3	
CATEGORY	A	B	C	D		
LPV DA	1731-1		250 (300-1)			
LNAV/VNAV DA	1922-1 3/8		441 (500-1 3/8)			
LNAV MDA	1900-1 419 (500-1)		1900-1 419 (500-1 1/8)			
CIRCLING	1980-1 494 (500-1)		2560-1 1/2 1074 (1100-1 1/2)		2560-3 1074 (1100-3)	



OLD

ELLIJAY, GEORGIA

AL-9848 (FAA)

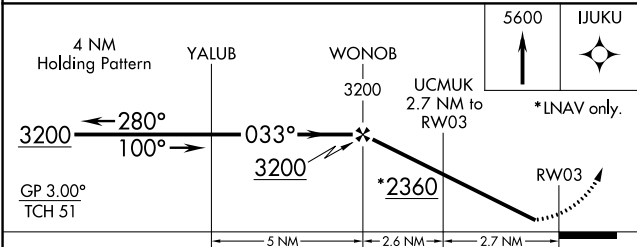
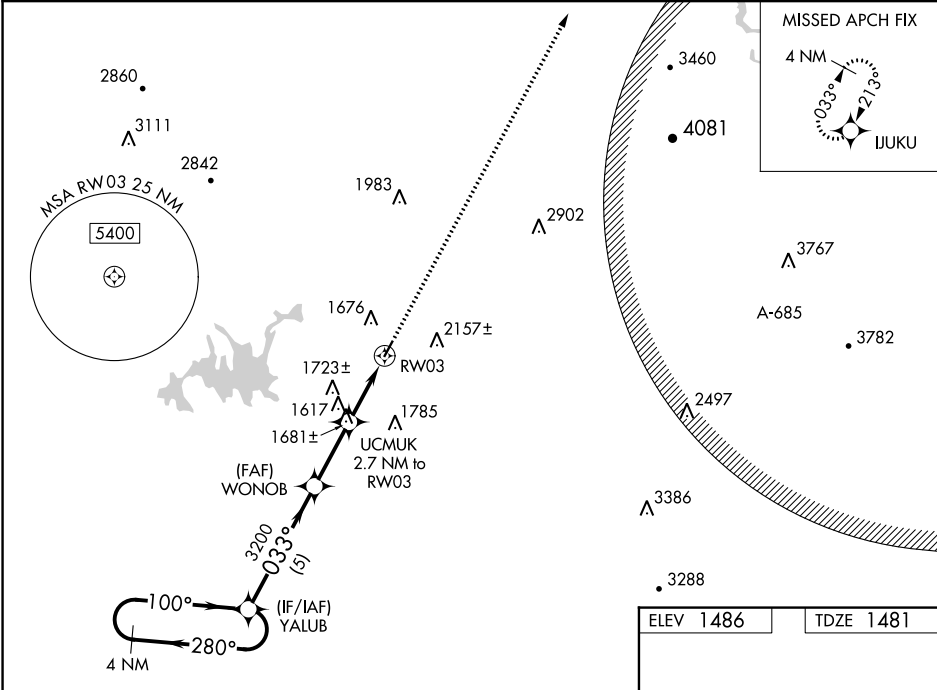
23166

WAAS CH 45941 W03A	APP CRS 033°	Rwy Idg TDZE 1481 Apt Elev 1486
--	------------------------	---

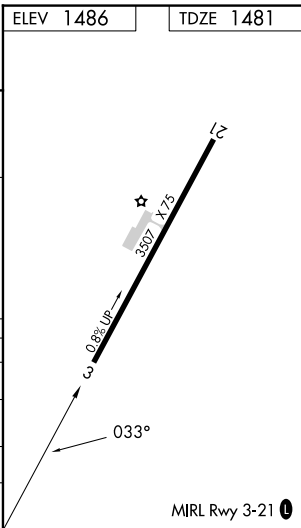
RNAV (GPS) RWY 3
GILMER COUNTY (49A)

RNP APCH.	MISSED APPROACH: Climb to 5600 direct IJUKU and hold, continue climb-in-hold to 5600.
-----------	--

AWOS-3 118.075	ATLANTA CENTER 133.1 342.425	UNICOM 123.0 (CTAF)
--------------------------	--	-------------------------------



CATEGORY	A	B	C	D
LPV DA		1731-1	250 (300-1)	
RNAV/VNAV DA		1790-1	309 (400-1)	
RNAV MDA	1880-1	399 (400-1)	1880-1 3/8	399 (400-1 3/8)
CIRCLING	1980-1 494 (500-1)	2560-1 1/2 1074 (1100-1 1/2)	2560-3	1074 (1100-3)



ELLIJAY, GEORGIA
Orig 13SEP18

OLD

34°38'N-84°32'W

GILMER COUNTY (49A)
RNAV (GPS) RWY 3

SE-4, 03 OCT 2024 to 31 OCT 2024

SE-4, 03 OCT 2024 to 31 OCT 2024

