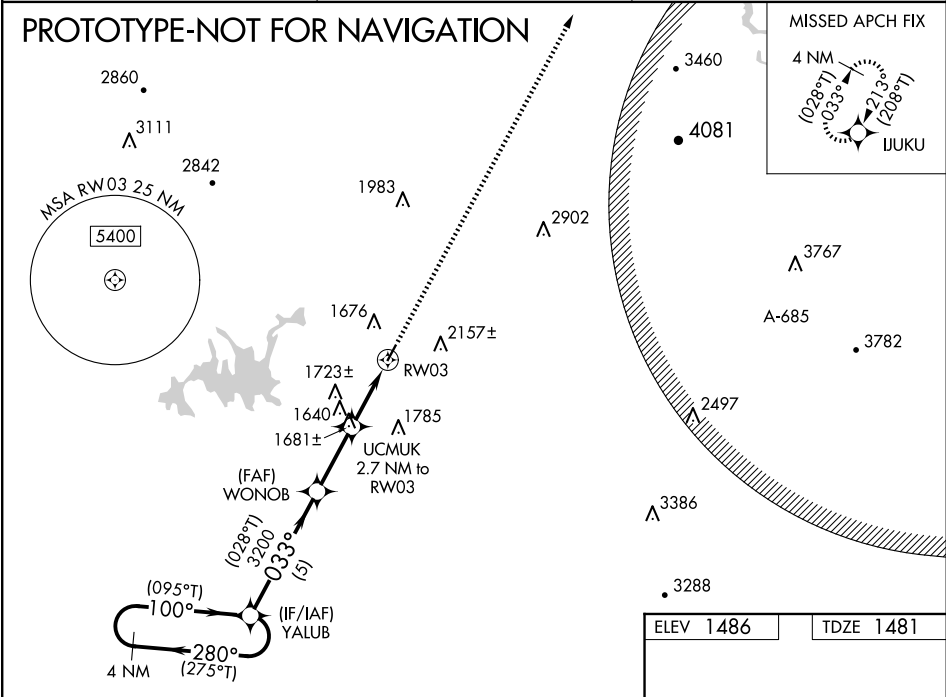


WAAS CH 45941 W03A	APP CRS 033°	Rwy Idg 3507 TDZE 1481 Apt Elev 1486
--	------------------------	---

RNAV (GPS) RWY 3
GILMER COUNTY (49A)

RNP APCH - GPS.	MISSED APPROACH: Climb to 5700 direct IJUKU and hold, continue climb-in-hold to 5700.
Procedure NA at night. Rwy 3 helicopter visibility reduction below 1 SM NA. For uncompensated Baro-VNAV systems, LNAV/VNAV NA below -17°C or above 54°C.	

AWOS-3 118.075	ATLANTA CENTER 133.1 342.425	UNICOM 123.0 (CTAF)
--------------------------	--	-------------------------------



4 NM Holding Pattern		YALUB	WONOB	UCMUK	5700	IJUKU
6000 3200		(275°T) 280° 100° (095°T)	(028°T) 033° 3200	2.7 NM to RWY 3	↑	✱
GP 3.00° TCH 51						
		5 NM	2.6 NM	2.7 NM		
CATEGORY	A	B	C	D		
LPV DA	1731-1		250 (300-1)			
LNAV/VNAV DA	1922-1 3/8		441 (500-1 3/8)			
LNAV MDA	1900-1	419 (500-1)	1900-1 1/8	419 (500-1 1/8)		
CIRCLING	1980-1 494 (500-1)	2560-1 1/2 1074 (1100-1 1/2)	2560-3	1074 (1100-3)		

