

|   |                         |                                |                                     |   |  |
|---|-------------------------|--------------------------------|-------------------------------------|---|--|
| Flight Procedures Cover Page  | Task Action:<br>P-NOTAM | Task Type:<br>IAP              | Estimated Chart Date:<br>06/12/2025 | APWS Task ID:<br>836E15E5E6AF4C678FCC72A7D74749AA | APWS Project ID:<br>848C4AF1D63446929FD02A9DDF6C6C90 |
| Procedure:<br>RNAV (GPS) RWY 26 AMDT 1D   |                         | Enroute:<br>NO                 | Specialist:<br>Keefer, John         |   | Agreement Number:                                    |
| Airport ID:<br>KBVX   |                         |                                | Airport City:<br>BATESVILLE         |   | State:<br>AR   |
| Facility ID:  | Facility Type:          | Flight Inspection Remark Type: |                                     |   |  |
| <p>Procedure Comments:</p> <p>PNOTAM to increase Circling CAT D Minimums for new controlling obstacle.<br/>This obstacle will be flight checked with the RNAV (GPS) RWY 8 with same chart date.</p> <p>PROCESSED IAW TECHNICAL SUPPORT GROUP (AJF-17) MEMO DATED 07/07/2021, SUBJECT: GUIDANCE FOR PROCEDURAL CHANGES REQUIRING FLIGHT INSPECTION VALIDATION.</p> <p>Contact Casimir Tabaka 405-954-7931.</p> <p>PNOTAN: 5/1731</p> <div><div>QUALITY<br/>41<br/>CHECKED</div><div>QUALITY<br/>32<br/>CHECKED<br/><i>Digitally signed by</i><br/><b>PABLO ORTIZ-JR</b><br/>Mar 10, 2025</div></div> |                         |                                |                                     |   |  |

|         |          |      |
|---------|----------|------|
| APP CRS | Rwy Idg  | 6002 |
| 259°    | TDZE     | 465  |
|         | Apt Elev | 465  |

**ACTIVE PROCEDURE**

# RNAV (GPS) RWY 26

BATESVILLE RGNL (BVX)

RNP APCH.



Circling NA N of Rwy 8-26.  
Rwy 26 helicopter visibility reduction below  $\frac{3}{4}$  SM NA.

MISSED APPROACH: Climb to  
3000 direct FIKIX and hold.

AWOS-3PT

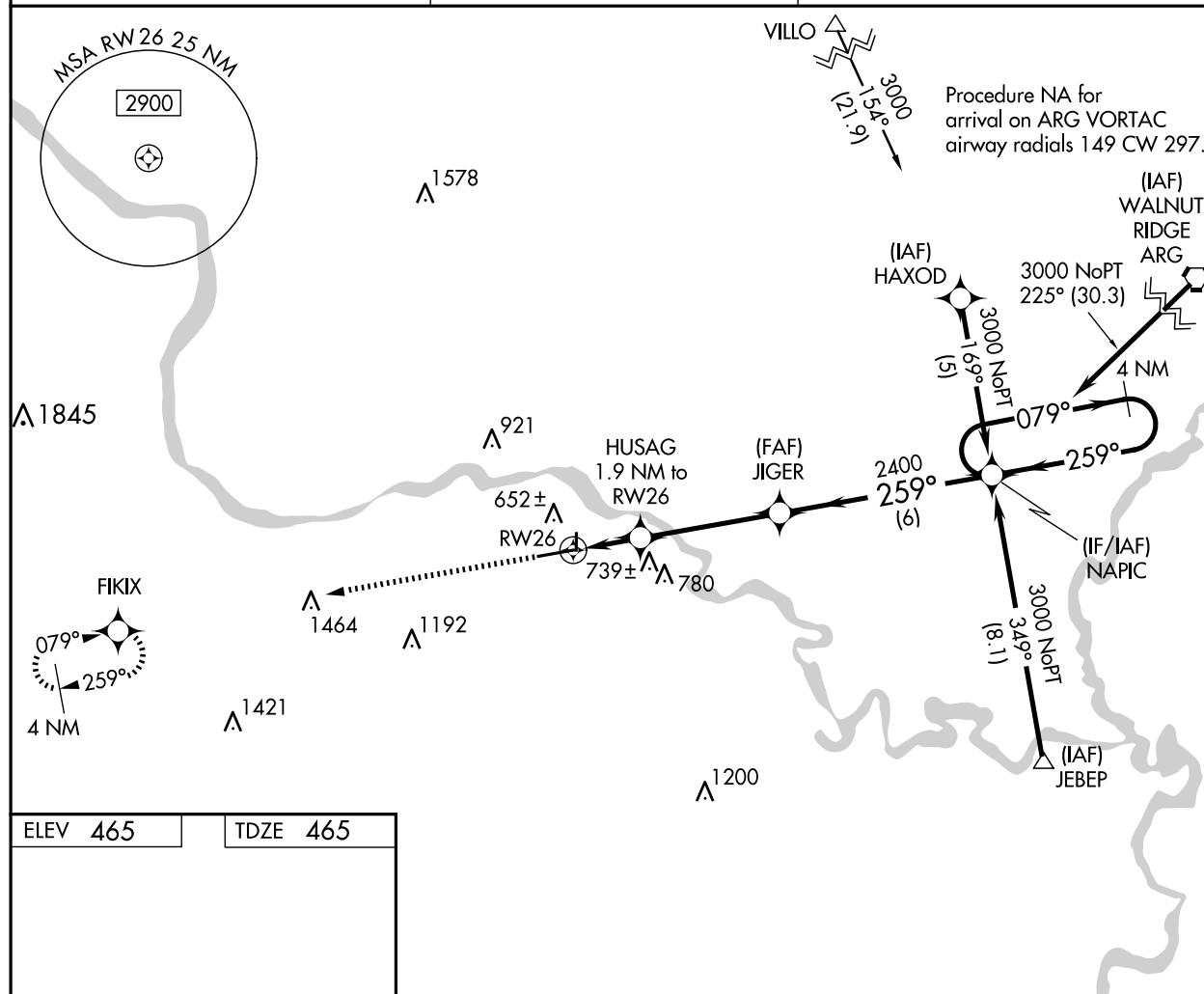
126.375

MEMPHIS CENTER

126.85 281.55

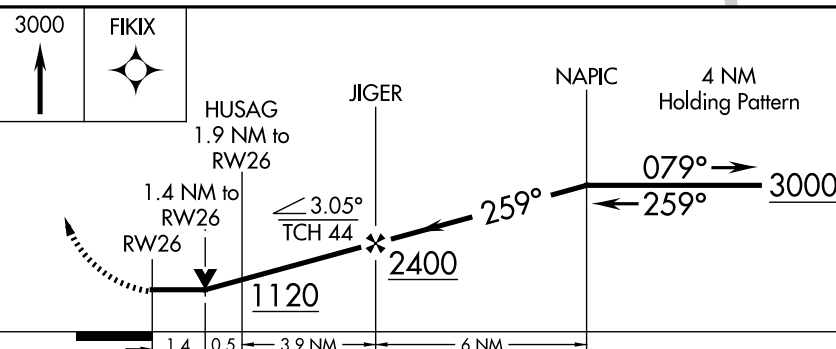
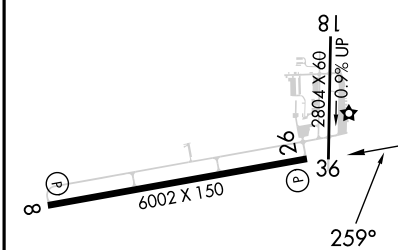
UNICOM

122.8 (CTAF) 0



ELEV 465

TDZE 465



| CATEGORY | A                 | B  | C   | D  |
|----------|-------------------|--|---|--|
| RNAV MDA | 940-1 475 (500-1) | 940-1 $\frac{3}{8}$ 475 (500-1 $\frac{3}{8}$ ) | 940-1 $\frac{1}{2}$ 475 (500-1 $\frac{1}{2}$ )  | 940-1 $\frac{1}{2}$ 475 (500-1 $\frac{1}{2}$ ) |
| CIRCLING | 980-1 515 (600-1) | 1000-1 535 (600-1)                             | 1220-2 $\frac{1}{4}$ 755 (800-2 $\frac{1}{4}$ ) | 1400-3 935 (1000-3)                            |

REIL Rwy 8 and 26 0  
MIRL Rwy 8-26 0

BATESVILLE, ARKANSAS

Amdt 1C 27JAN22

35°44'N-91°39'W

BATESVILLE RGNL (BVX)

RNAV (GPS) RWY 26

SC-1, 23 JAN 2025 to 20 FEB 2025

SC-1, 23 JAN 2025 to 20 FEB 2025



