

Flight Procedures Cover Page	Task Action: Abbreviated Amendment	Task Type: IAP	Estimated Chart Date: 11/03/2022	APWS Task ID: 831210ABC0B948BEA9DEA6633DEFF39A	APWS Project ID: 04EC75090A2D4171B6DB9103E121F5B5
Procedure: RNAV (GPS) RWY 17 AMDT 0B		Enroute: NO	Specialist: Nesbitt, Cole		Agreement Number:
Airport ID: KATY			Airport City: WATERTOWN		State: SD
Facility ID:	Facility Type:	Flight Inspection Remark Type:			
<p>Procedure Comments: ABBREVIATED AMENDMENT COMPLETED USING ACTIVE DATA FOR KATY.</p> <p>PROCESSED IAW TECHNICAL SUPPORT GROUP (AJF-17) MEMO DATED 07/07/2021 GUIDANCE FOR PROCEDURAL CHANGES REQUIRING FLIGHT INSPECTION/VALIDATION.</p> <p>CONTACT: DONALD LANIER, 405.954.8242</p> <p><i>Digitally signed by</i> <b>ERIC N SUSKI</b> Aug 04, 2022</p> <div style="border: 1px solid blue; padding: 5px; margin: 10px auto; width: fit-content;"> CATEX HAS BEEN REQUEST AND WILL BE ADDED WHEN AVAILABLE. </div> <div style="text-align: right; margin-top: 20px;"> J ZEDER 08/02/2022 </div>					

QUALITY  
15  
CHECKED

QUALITY  
16  
CHECKED

WAAS  
CH 82305  
W17A

APP CRS  
174°

Rwy Idg	<b>6893</b>
TDZE	<b>1740</b>
Apt Elev	<b>1749</b>

RNAV (GPS) RWY 17  
WATERTOWN RGNL (ATY)

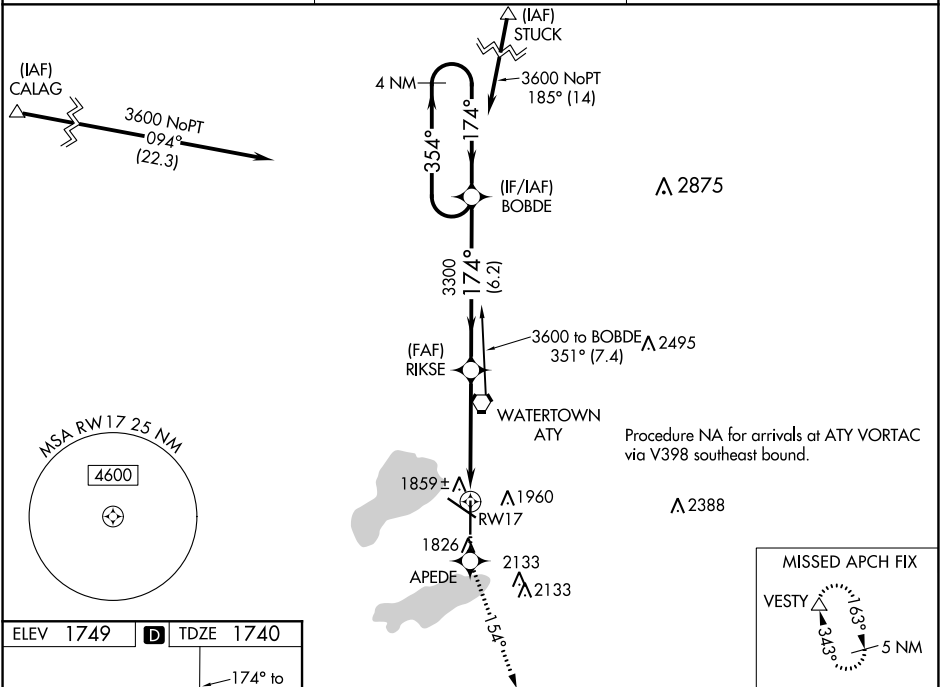
**▼** Baro-VNAV NA when using Brookings altimeter setting. DME/DME RNP-0.3 NA  
**▲** For uncompensated Baro-VNAV systems, LNAV/VNAV NA below -18°C (0°F) or above 45°C (113°F). VDP NA when using Brookings altimeter setting. When local altimeter setting not received, use Brookings altimeter setting and increase all DAs 105 feet and all MDAs 120 feet; increase Circling Cat C and D visibility ¼ SM.

**MISSED APPROACH:** Climb to 4000  
direct APEDE and via 154° track  
to VESTY and hold.

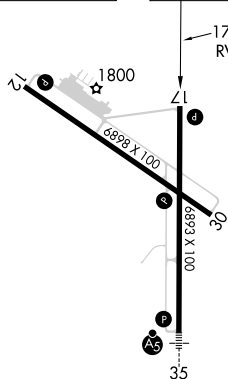
ASOS  
126,625

MINNEAPOLIS CENTER  
128.5 306.2

UNICOM  
123.05 (CTAF) **L**



ELEV 1749	<b>D</b>	TDZE 1740
-----------	----------	-----------



REIL Rwy 12, 17 and 30 **L**  
HIRL Rwy 17-35 **L**  
MIRL Rwy 12-30 **L**

4000 ↑	APEDE ✦	154° tr	VESTY △	VGS1 and RNAV glidepath not coincident (VGS1 Angle 3.00/TCH 35).				
				BOBDE	4 NM Holding Pattern			
*LNAV only				RIKSE	3600			
				354° → ← 174°				
				3300	GP 3.00° TCH 45			
CATEGORY		A		B		C		D
LPV	DA	2054-1 314 (400-1)						
LNAV/ VNAV	DA	2129-1¼ 389 (400-1¼)						
LNAV MDA		2120-1 380 (400-1)						2120-1¼ 380 (400-1¼)
CIRCLING		2260-1 511 (600-1)			2500-2¼ 751 (800-2¼)		2500-2½ 751 (800-2½)	