

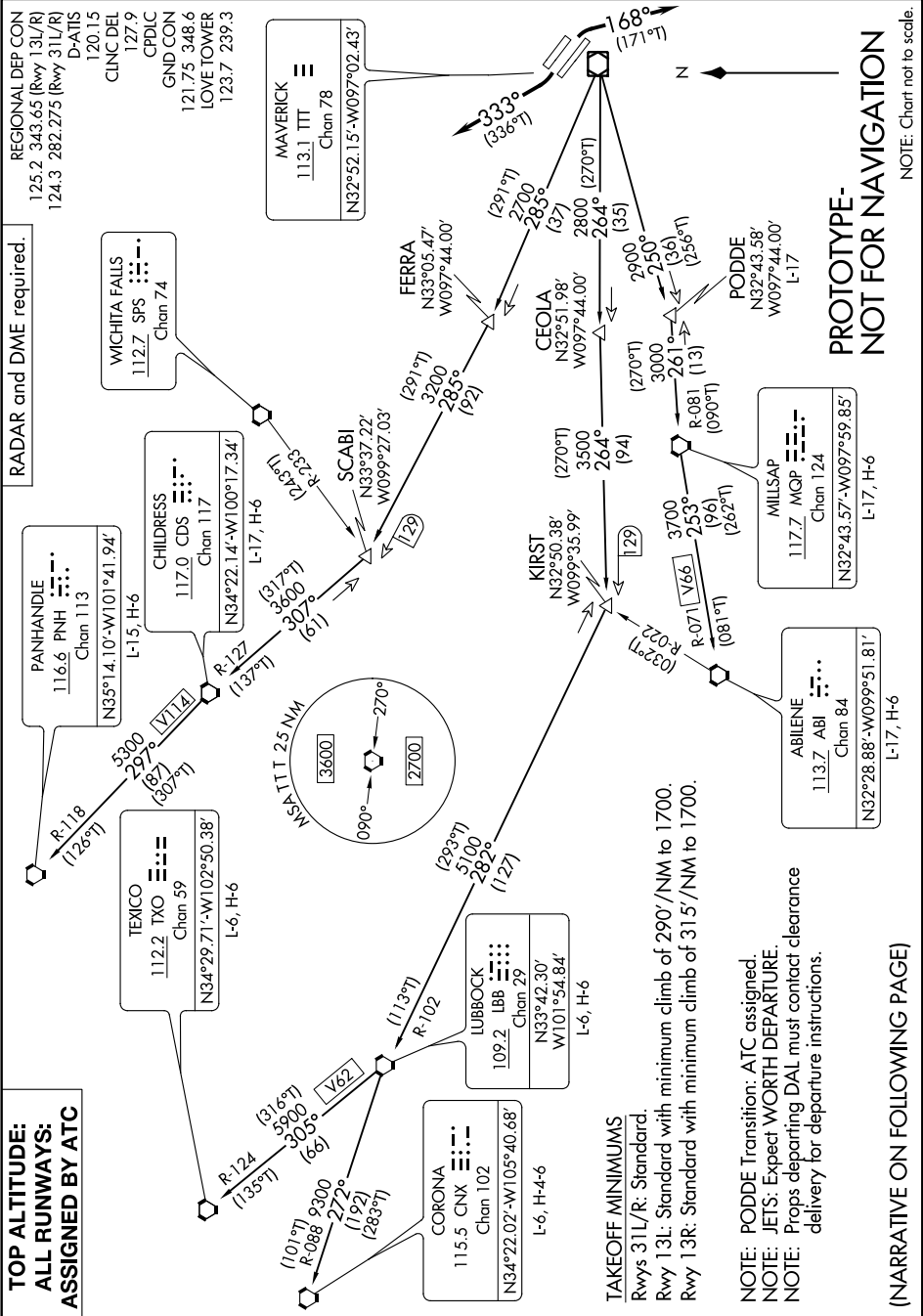
Flight Procedures Cover Page	Task Action: FLIGHT CHECK	Task Type: SID	Estimated Chart Date: 10/05/2023	APWS Task ID: 82ED10A0E4764660A8877CC8315975F2	APWS Project ID: 34ACD1ADD549441B99D21CA358515355
Procedure: SID COYOTE FOUR DALLAS TX KDAL		Enroute: YES	Specialist: Hill, Casey		Agreement Number:
Airport ID: KDAL			Airport City: DALLAS		State: TX
Facility ID:	Facility Type:	Flight Inspection Remark Type: New FC Slot			
<div>Procedure Comments:</div> <div>ROUTE HEADING CHANGE FOR KDAL</div> <div>CONTACT CASIMIR L TABAKA (405) 954-7931</div> <div>12/06/23: THIS IS AN UPDATED COPY OF THE FORM DEVELOPED ON 05/09/23.</div> <div>8260-15B:</div> <div>1. TRANSITION ROUTES, CHANGED MEA ON ALL TTT VOR/DME TO FIX PODDE SEGMENTS FROM 2900 TO 3500. - NEW TTT DME RESTRICTION RADIALS 240-260 BEYOND 20 NM AND BELOW 3500 DUE TO FAILED FLIGHT INSPECTION ON 12/02/2023.</div> <div>2. REMARKS, DELETED "DO NOT CHART MOCA: FROM TTT VOR/DME TO FIX PODDE". - THIS SEGMENT MEA RAISED TO 3500 AND IS NOW GREATER THAN 500 FT ABOVE MOCA.</div> <div>3. SIGNATURE BLOCK, ADDED FLIGHT INSPECTED BY "JEFFREY A FINDLEY", OFFICE "FPO" AND DATE "11/28/2023", AND CHANGED DEVELOPED BY FROM "CASEY HILL" TO "MICHAEL MCCARTNEY" AND OFFICE FROM "AJV-A432" TO "AJV-A431".</div> <div><div>Digitally signed by</div><div>ERIC N SUSKI</div><div>Dec 06, 2023</div></div> <div>J ZEDER 12/06/2023</div>					

QUALITY
20
CHECKED

QUALITY
38
CHECKED

QUALITY
16
CHECKED

FIPC BASIC FORM						
PROCEDURE: SID COYOTE FOUR DALLAS TX KDAL			AIRPORT NAME: DALLAS LOVE FLD		AIRPORT ID: KDAL	SPECIAL CONTROL NO: OP-10-131-23
FAC ID: CYOTE4		CITY: DALLAS			ST: TX	ORIG CHART DATE: 01/25/2024
DFL TYPE: PROC/T	THIRD PARTY: <input type="checkbox"/> YES	EST. TIME ON SITE: 0.4	REIMB. NUMBER:	PTS TASK ID: 82ED10A0E4764660A8877CC8315975F2		
PREFLIGHT NOTES						
REVIEWER: jeffrey a findley					DATE: 11/28/2023	
COMMENTS:					CHECK ONE:	
					<input checked="" type="checkbox"/> FLT CK REQ <input type="checkbox"/> NFCR <input type="checkbox"/> REJECT	
						YES
					CPV COMPLETE?	
					X	
PROCEDURE RESULTS						
INSPECTION DATE: 11/28/2023	CREW #: VN450	N #: N79	INSTRUMENT PROCEDURE STATUS: <input checked="" type="checkbox"/> SAT <input type="checkbox"/> SAT W/CHANGES <input type="checkbox"/> UNSAT		ARINC CODING: <input checked="" type="checkbox"/> SAT <input type="checkbox"/> SAT/GOLD <input type="checkbox"/> UNSAT	
FLIGHT INSPECTOR SIGNATURE: jeffrey a findley @ 11/28/2023 21:39			PRINTED NAME: FINDLEY, JEFFREY ALLEN			NOTAM INITIATED? <input type="checkbox"/> YES <input checked="" type="checkbox"/> NO
FLIGHT INSPECTOR REMARKS:						
IN-FLIGHT OBSTACLE REPORT						
OBSTRUCTION ID #:	COORDINATES OR LOCATION:	GNSS ALTITUDE (MSL):	BAROMETRIC ALTITUDE (MSL):	HEIGHT ABOVE GROUND LEVEL:		





DEPARTURE ROUTE DESCRIPTION

TAKEOFF RUNWAYS 13L/R: Climb on heading 168° for RADAR vectors to appropriate route. Maintain assigned altitude and expect filed altitude 10 minutes after departure.

TAKEOFF RUNWAYS 31L/R: Climb on heading 333° for RADAR vectors to appropriate route. Maintain assigned altitude and expect filed altitude 10 minutes after departure.

ABILENE TRANSITION (CYOTE4.ABI): From over TTT VOR/DME on TTT R-250 to PODDE, then on MQP R-081 to MQP VORTAC, then on MQP R-253 and ABI R-071 to ABI VORTAC.

CHILDRESS TRANSITION (CYOTE4.CDS): From over TTT VOR/DME on TTT R-285 to SCABI, then on CDS R-127 to CDS VORTAC.

CORONA TRANSITION (CYOTE4.CNX): From over TTT VOR/DME on TTT R-264 to KIRST, then on LBB R-102 to LBB VORTAC, then on LBB R-272 and CNX R-088 to CNX VORTAC.

LUBBOCK TRANSITION (CYOTE4.LBB): From over TTT VOR/DME on TTT R-264 to KIRST, then on LBB R-102 to LBB VORTAC.

MILLSAP TRANSITION (CYOTE4.MQP): From over TTT VOR/DME on TTT R-250 to PODDE, then on MQP R-081 to MQP VORTAC.

PANHANDLE TRANSITION (CYOTE4.PNH): From over TTT VOR/DME on TTT R-285 to SCABI, then on CDS R-127 to CDS VORTAC, then on CDS R-297 and PNH R-118 to PNH VORTAC.

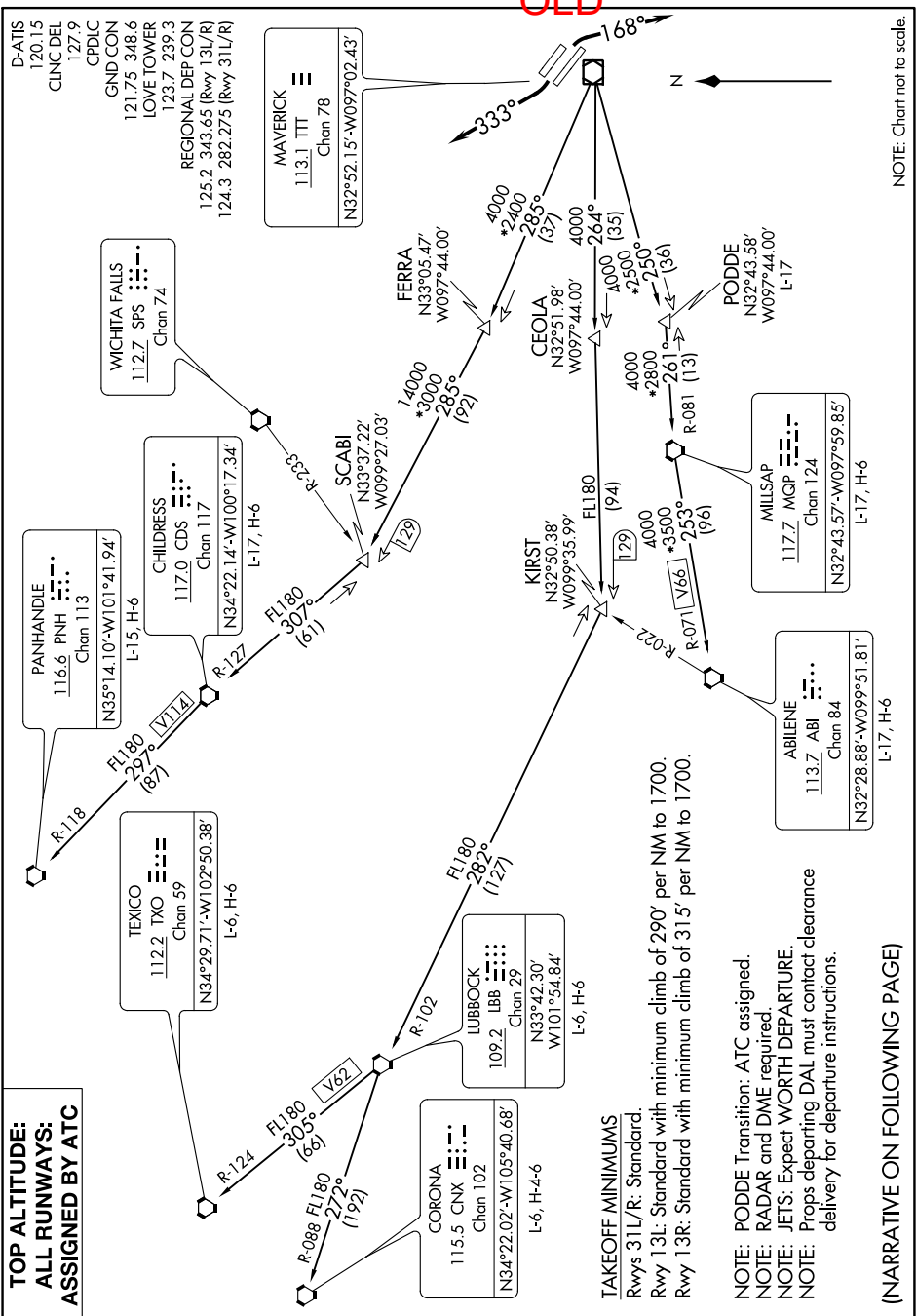
PODDE TRANSITION (CYOTE4.PODDE): From over TTT VOR/DME on TTT R-250 to PODDE.

TEXICO TRANSITION (CYOTE4.TXO): From over TTT VOR/DME on TTT R-264 to KIRST, then on LBB R-102 to LBB VORTAC, then on LBB R-305 and TXO R-124 to TXO VORTAC.

PROTOTYPE-NOT FOR NAVIGATION

COYOTE THREE DEPARTURE

OLD



NOTE: Chart not to scale.

NOTE: Chart not to scale.

NOTE: Chart not to scale.

NOTE: Chart not to scale.

COYOTE THREE DEPARTURE



DEPARTURE ROUTE DESCRIPTION

TAKEOFF RUNWAYS 13L/R: Climb on heading 168° for vectors to appropriate route.
Maintain assigned altitude and expect filed altitude 10 minutes after departure.

TAKEOFF RUNWAYS 31L/R: Climb on heading 333° for vectors to appropriate route.
Maintain assigned altitude and expect filed altitude 10 minutes after departure.

ABILENE TRANSITION (CYOTE3.ABI): From over TTT VOR/DME on TTT R-250 to PODDE,
then on MQP R-081 to MQP VORTAC, then on MQP R-253 and ABI R-071 to ABI VORTAC.

CHILDRESS TRANSITION (CYOTE3.CDS): From over TTT VOR/DME on TTT R-285 to SCABI,
then on CDS R-127 to CDS VORTAC.

CORONA TRANSITION (CYOTE3.CNX): From over TTT VOR/DME on TTT R-264 to KIRST,
then on LBB R-102 to LBB VORTAC, then on LBB R-272 and CNX R-088 to CNX VORTAC.

LUBBOCK TRANSITION (CYOTE3.LBB): From over TTT VOR/DME on TTT R-264 to KIRST,
then on LBB R-102 to LBB VORTAC.

MILLSAP TRANSITION (CYOTE3.MQP): From over TTT VOR/DME on TTT R-250 to PODDE,
then on MQP R-081 to MQP VORTAC.

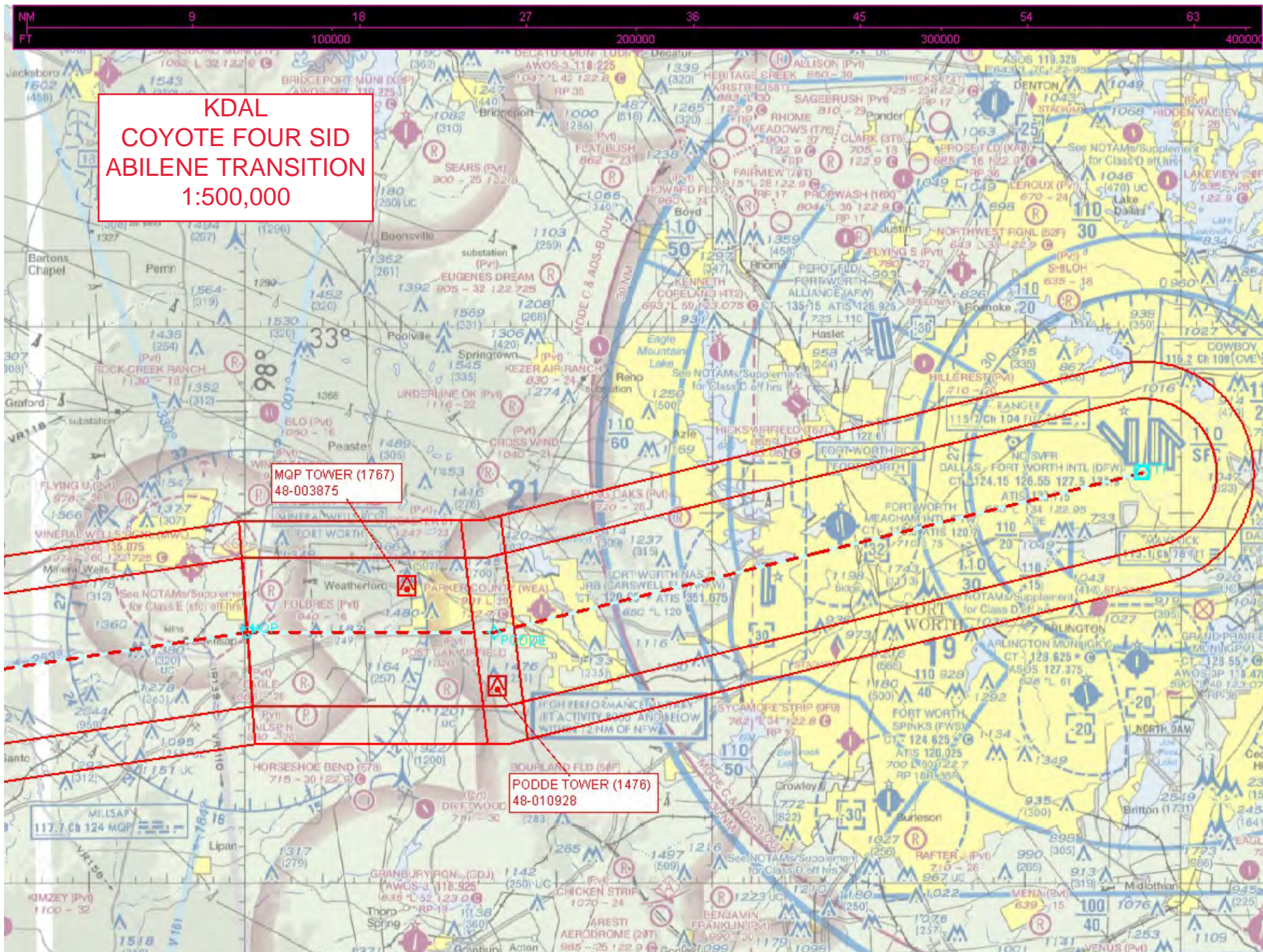
PANHANDLE TRANSITION (CYOTE3.PNH): From over TTT VOR/DME on TTT R-285 to
SCABI, then on CDS R-127 to CDS VORTAC, then on CDS R-297 and PNH R-118 to
PNH VORTAC.

PODDE TRANSITION (CYOTE3.PODDE): From over TTT VOR/DME on TTT R-250 to PODDE.

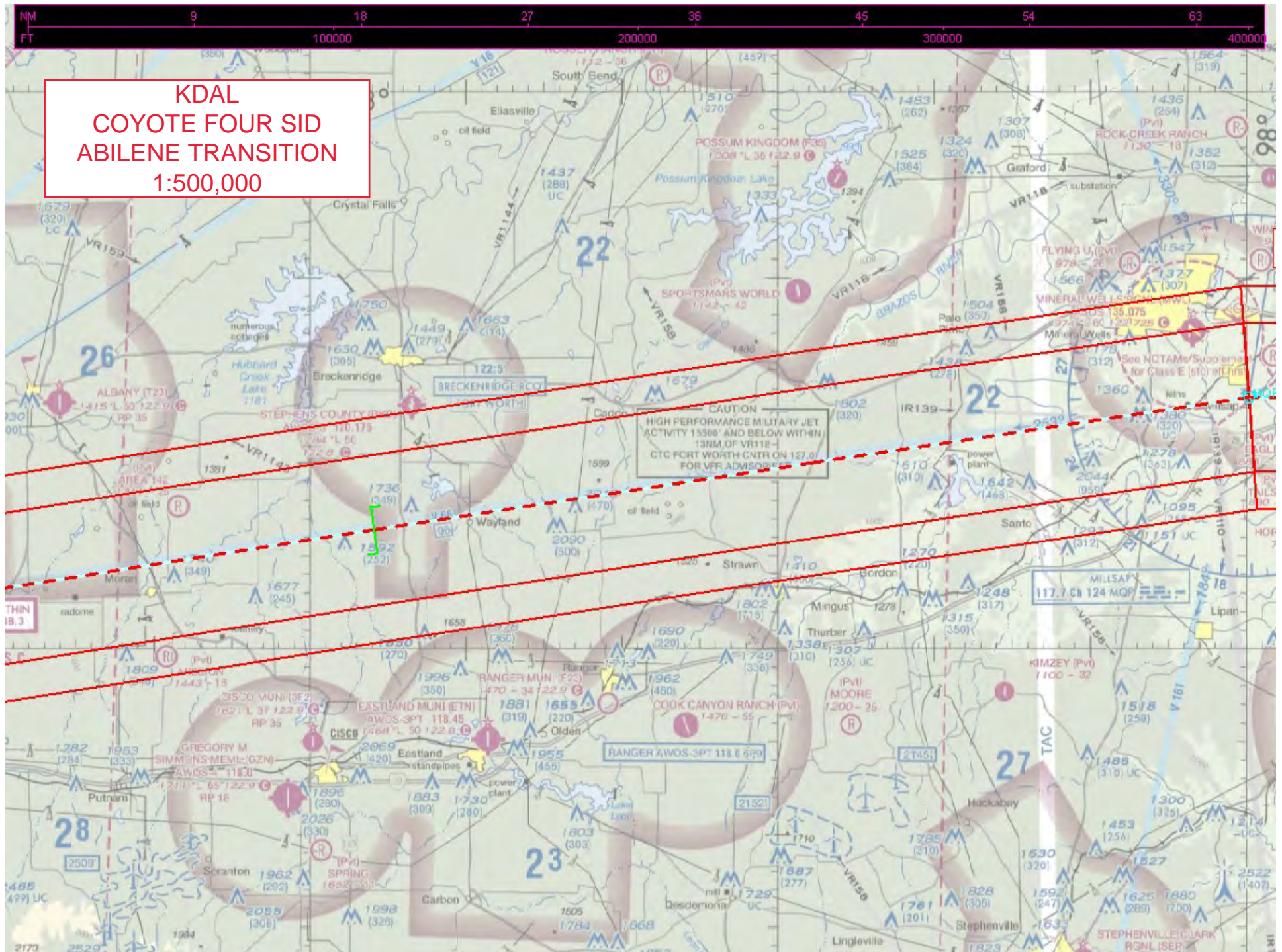
TEXICO TRANSITION (CYOTE3.TXO): From over TTT VOR/DME on TTT R-264 to KIRST,
then on LBB R-102 to LBB VORTAC, then on LBB R-305 and TXO R-124 to TXO VORTAC.

SC-2, 20 APR 2023 to 18 MAY 2023

SC-2, 20 APR 2023 to 18 MAY 2023



KDAL
COYOTE FOUR SID
ABILENE TRANSITION
1:500,000

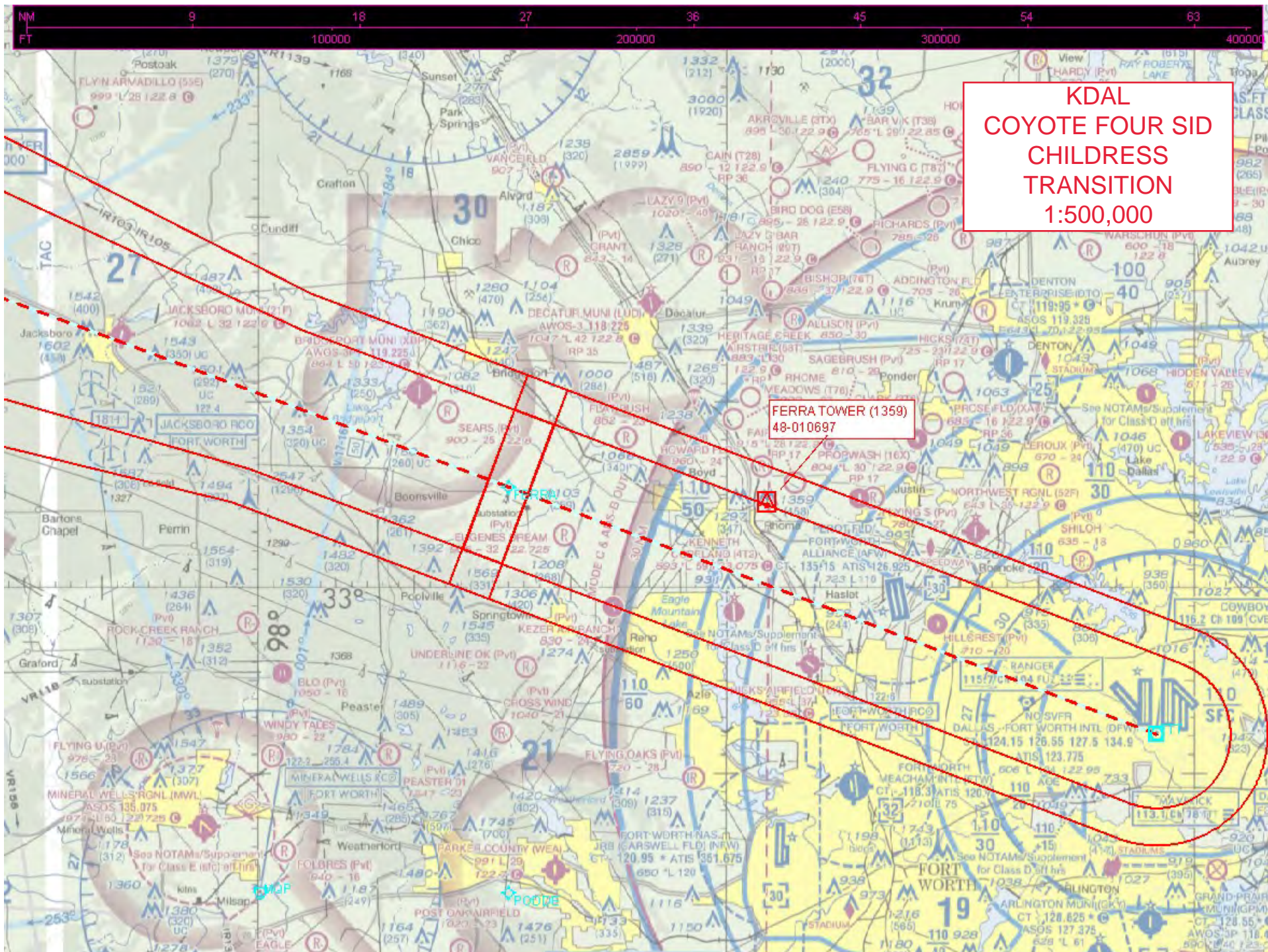


KDAL
 COYOTE FOUR SID
 ABILENE TRANSITION
 1:500,000

ABI WINDMILL (2554)
48-185925

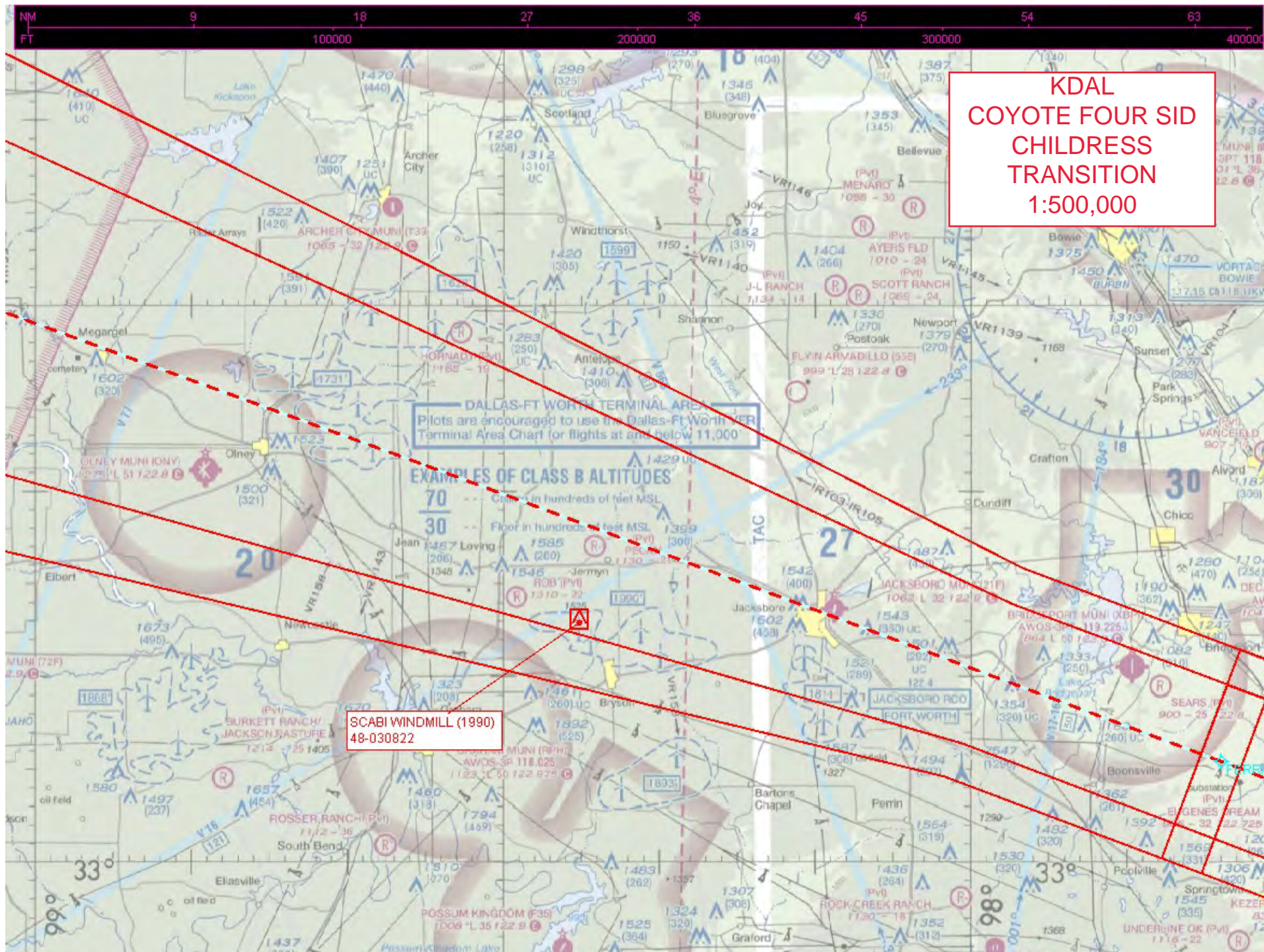
CTC ABILENE APP WITHIN
20 NM ON 125.0 338.3

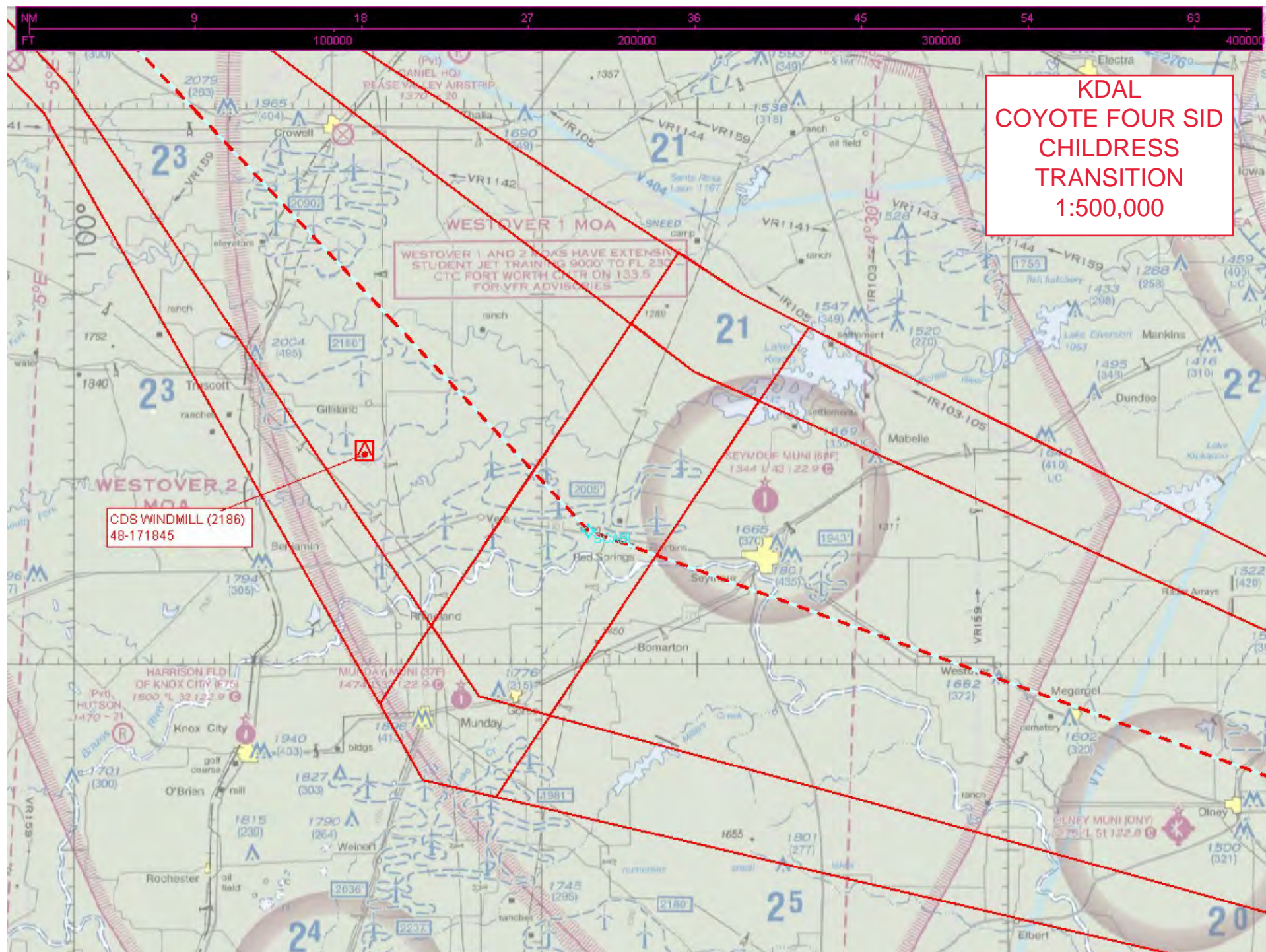
ABILENE CLASS C

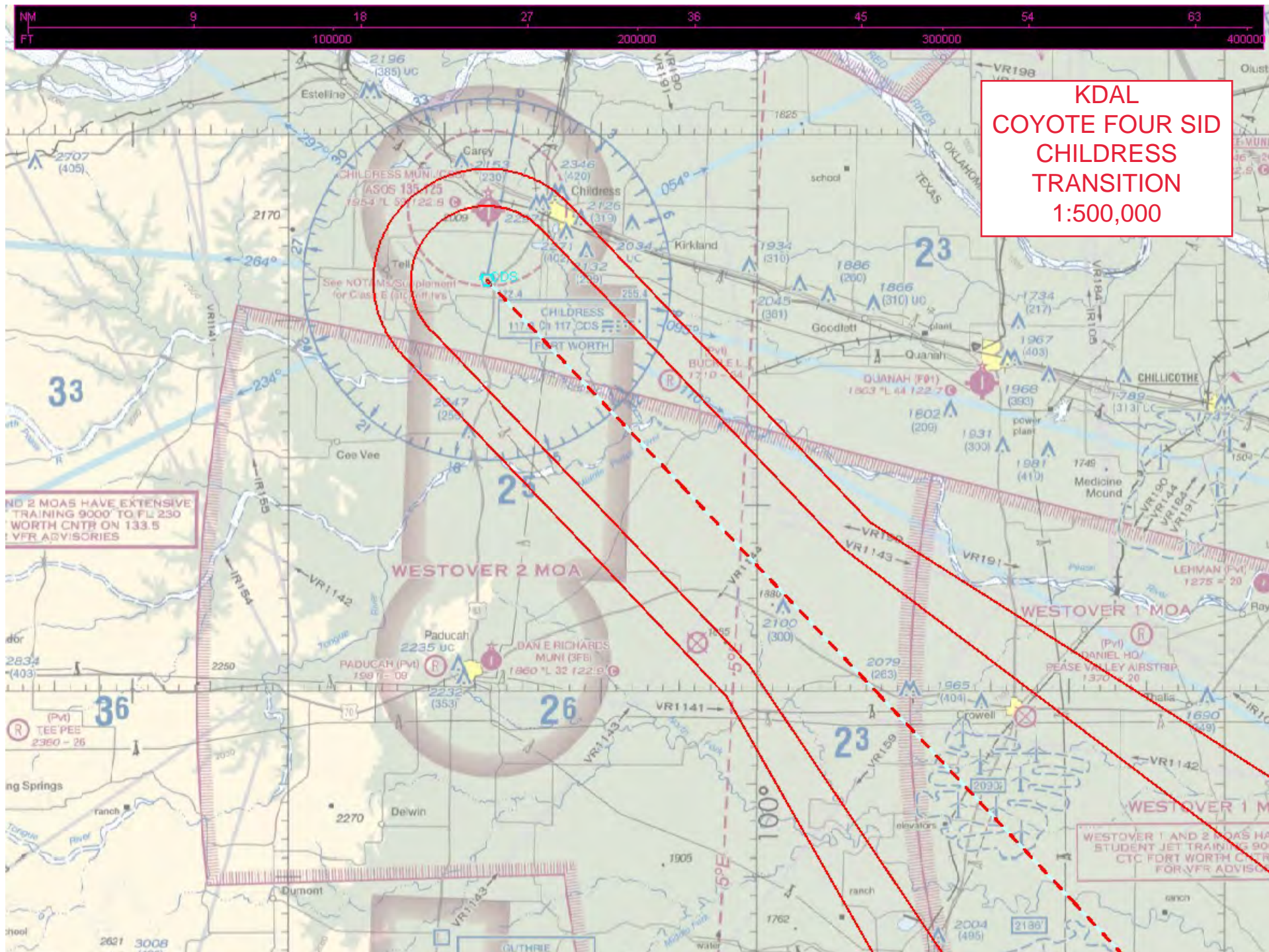


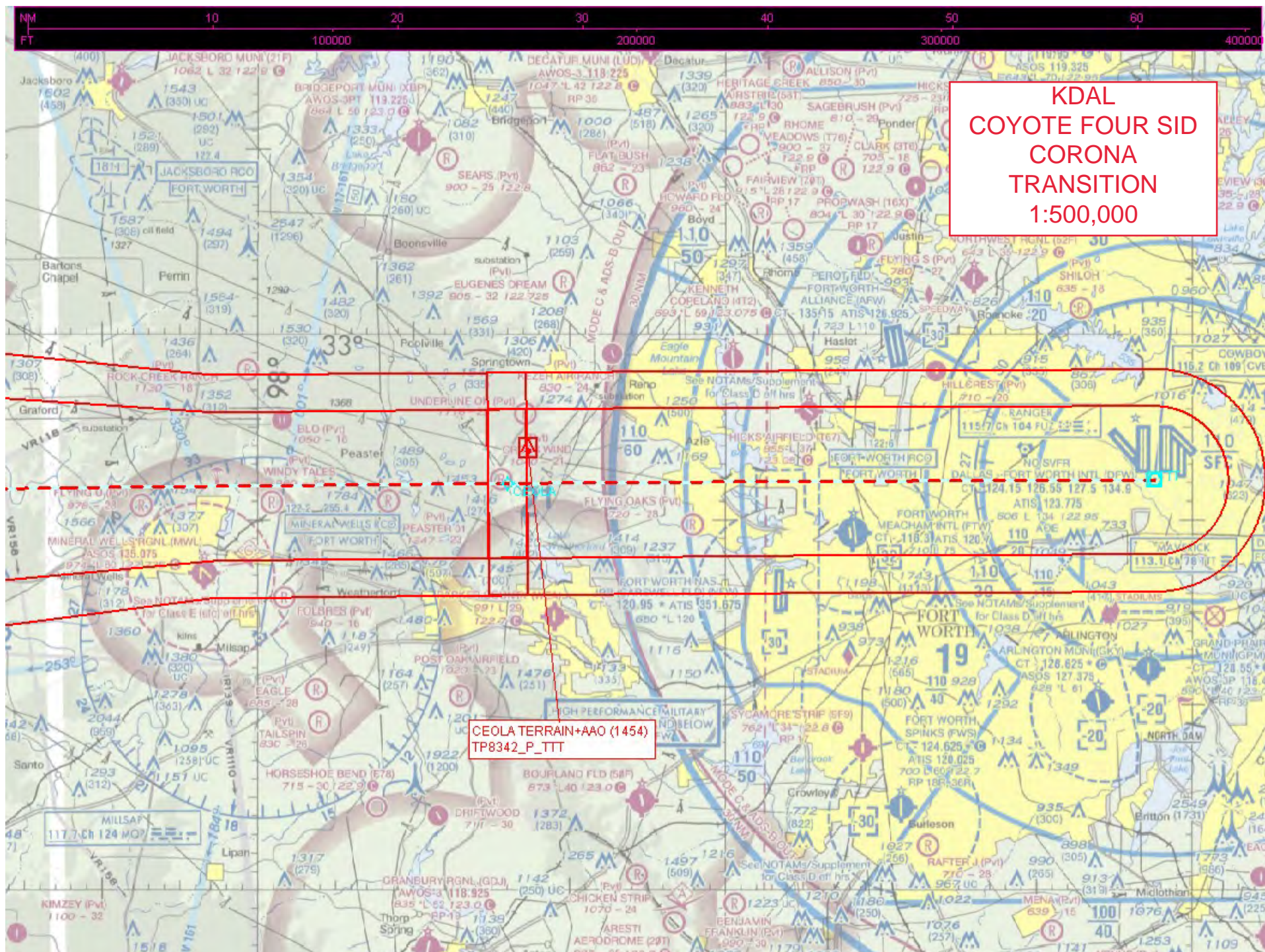
KDAL
COYOTE FOUR SID
CHILDRESS
TRANSITION
1:500,000

FERRA TOWER (1359)
48-010697







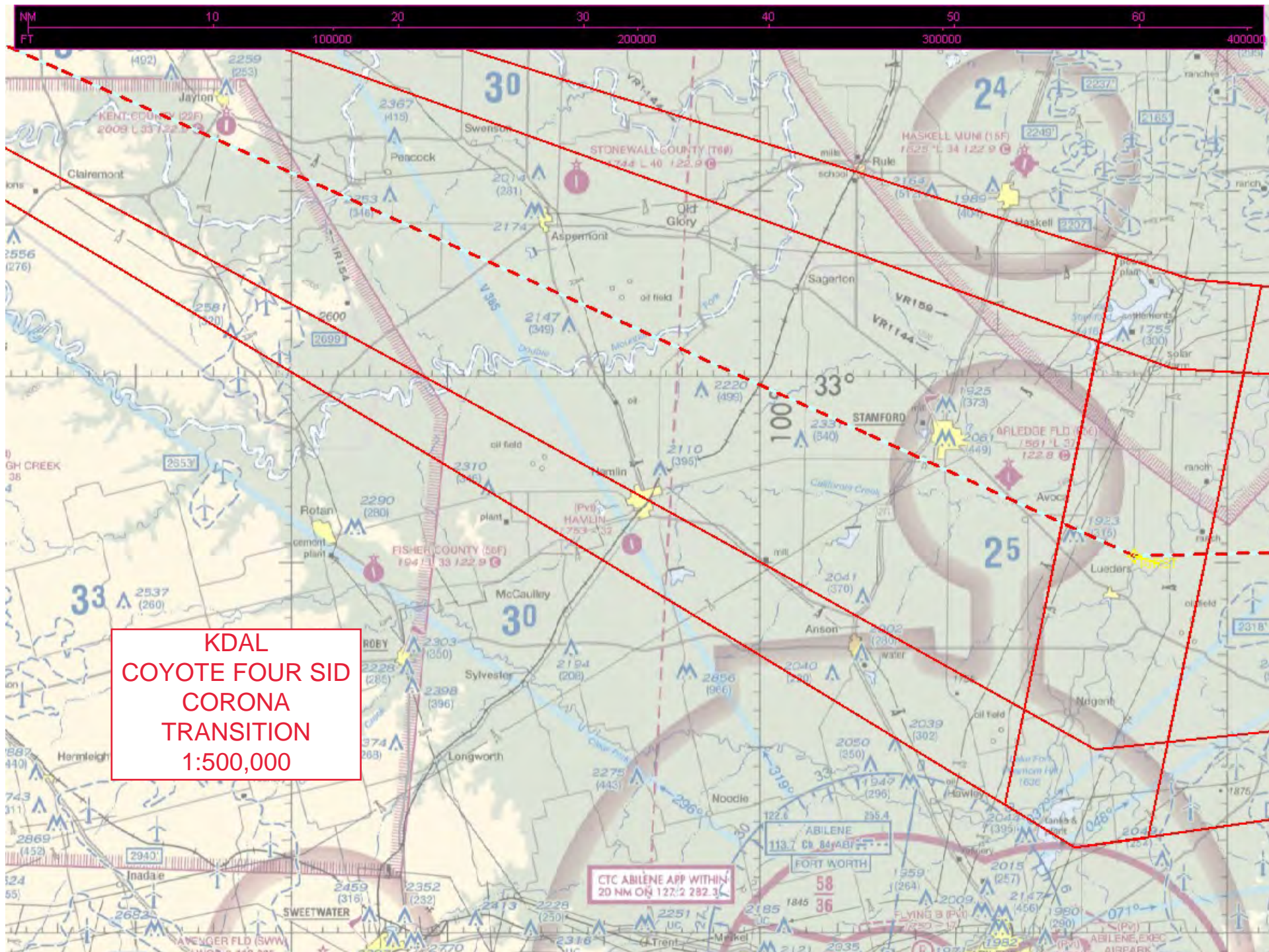


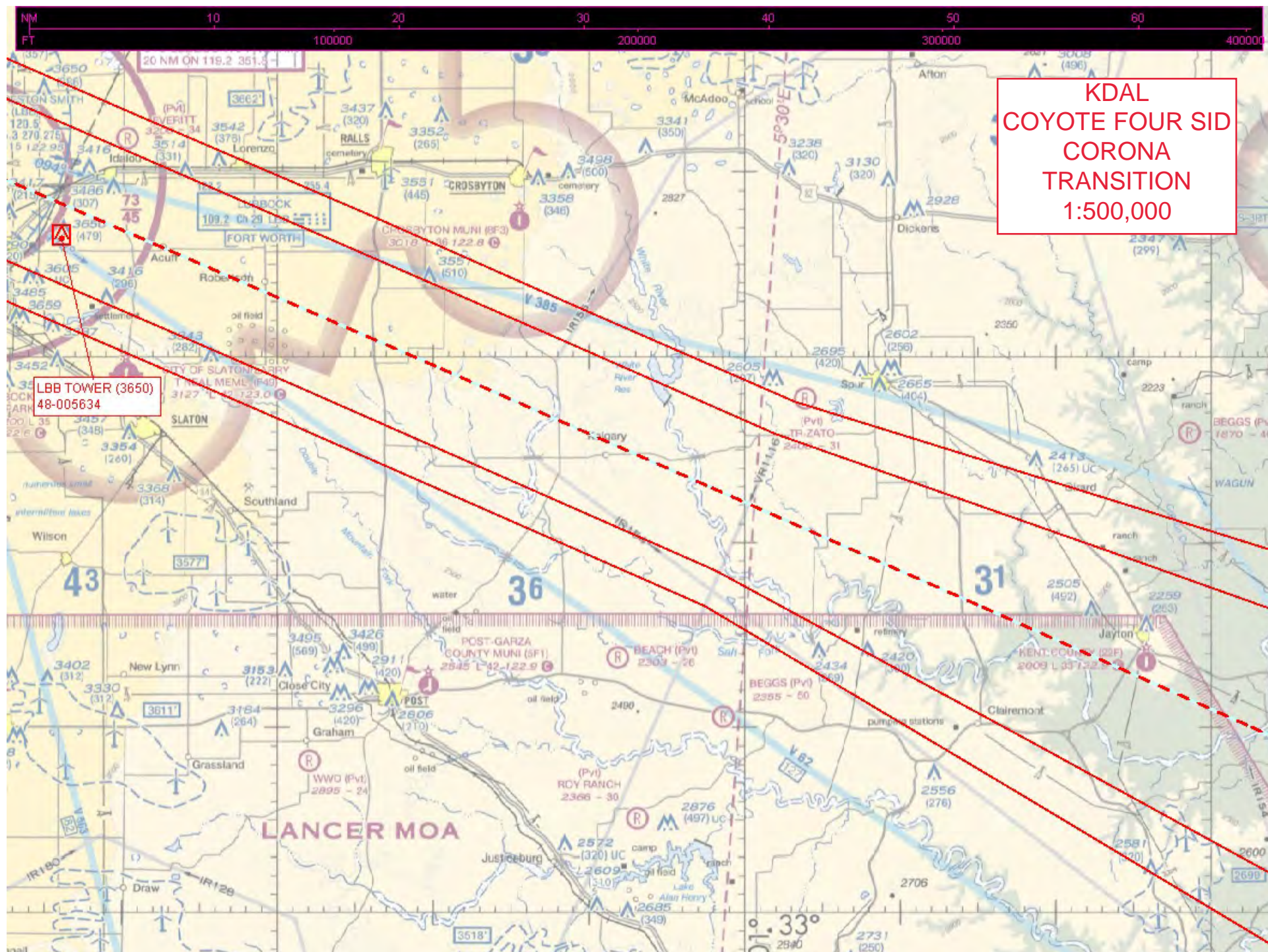
KDAL
 COYOTE FOUR SID
 CORONA
 TRANSITION
 1:500,000

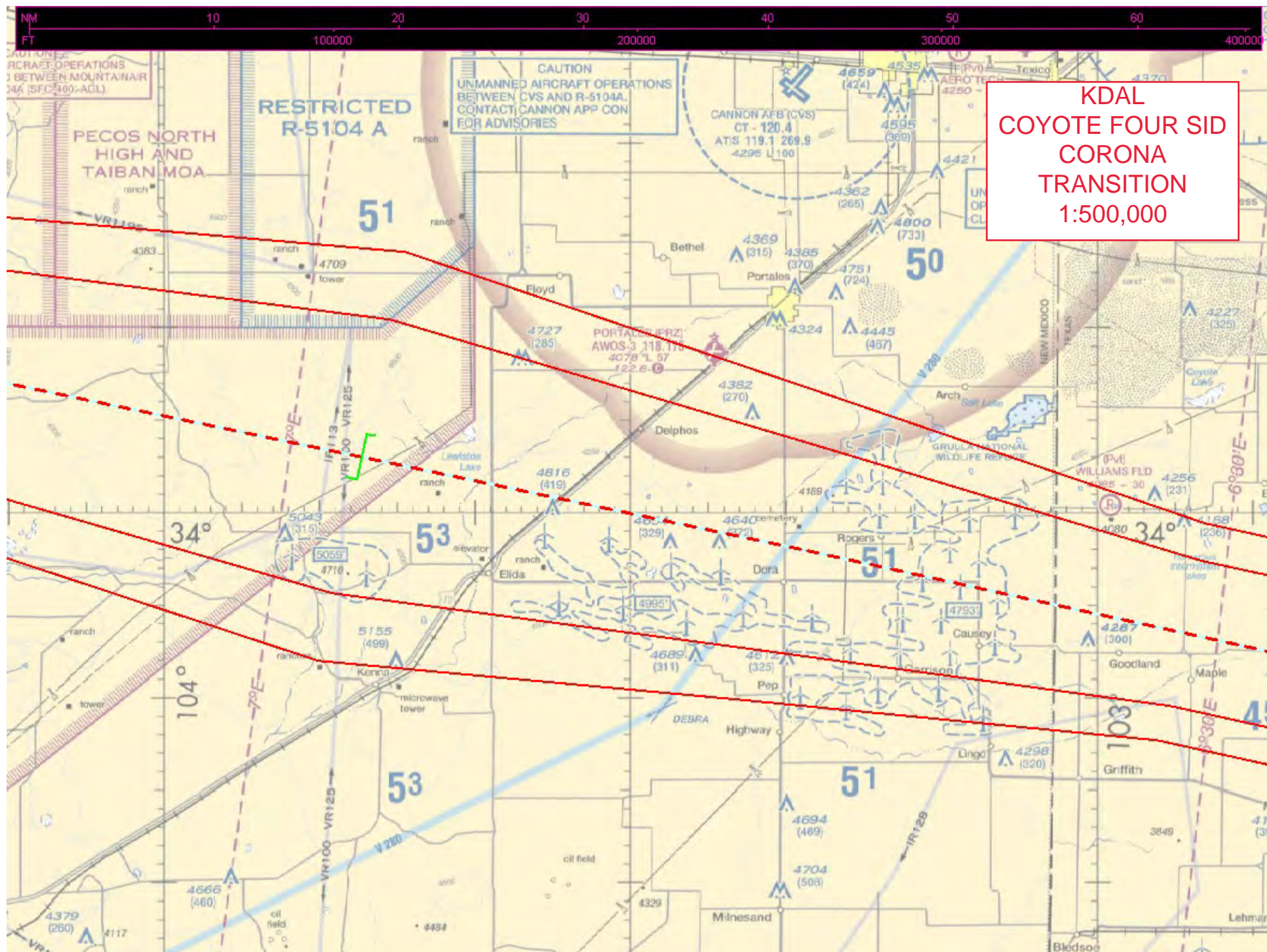
KIRST TOWER (2478)
48-024098

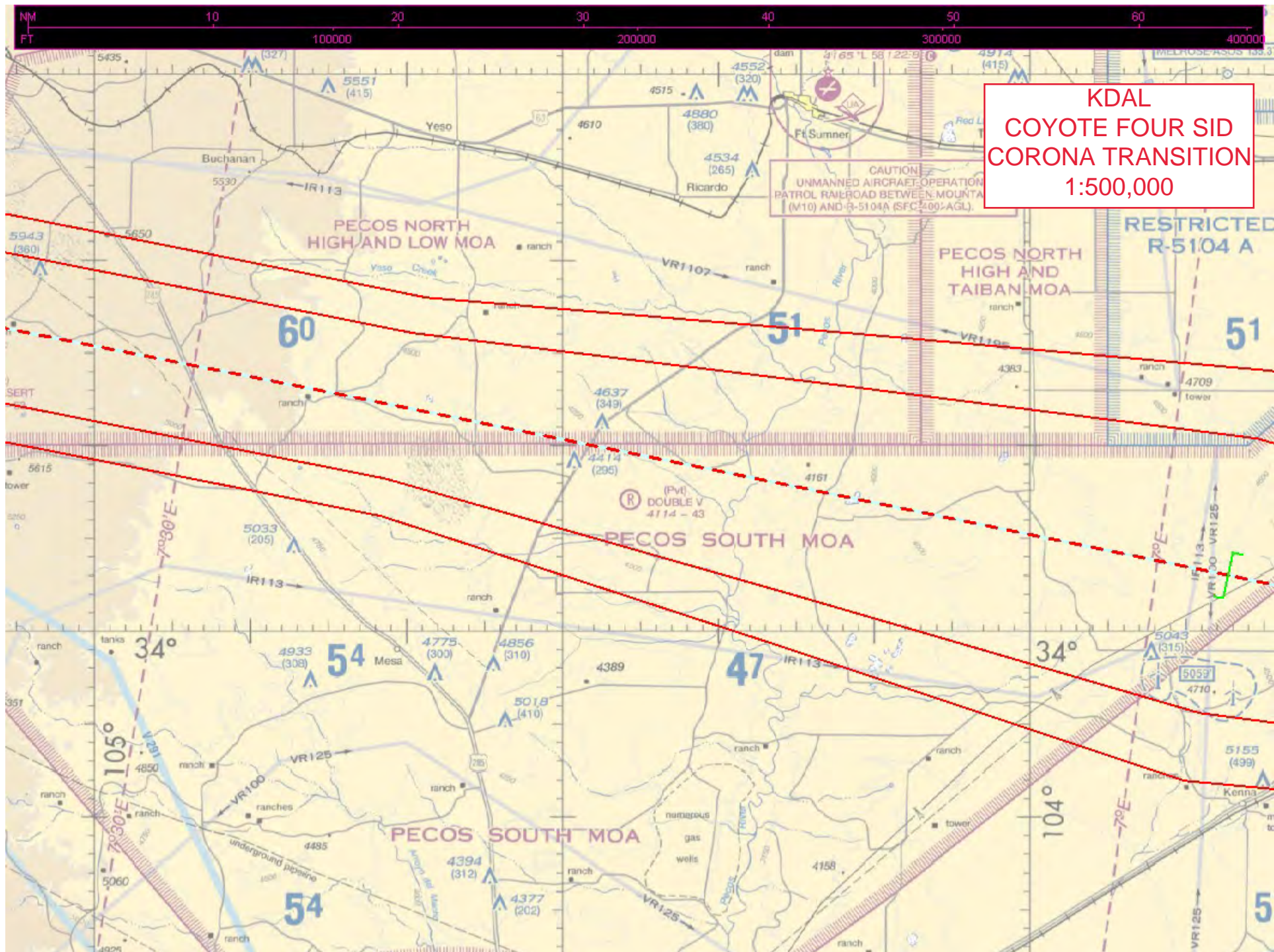
CTC ABILENE APP WITHIN
20 NM ON 125.0 338.3

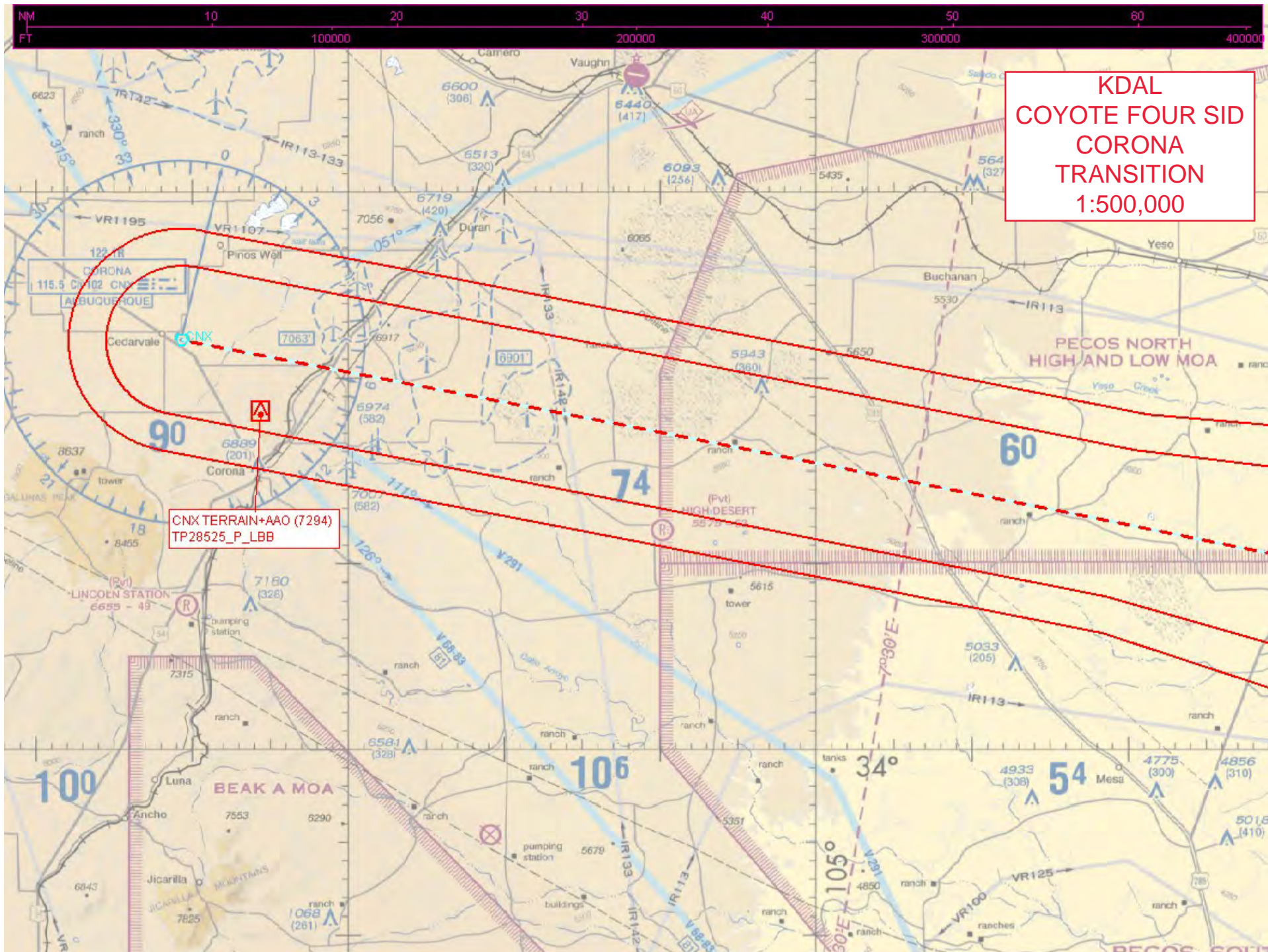
ABILENE CLASS C

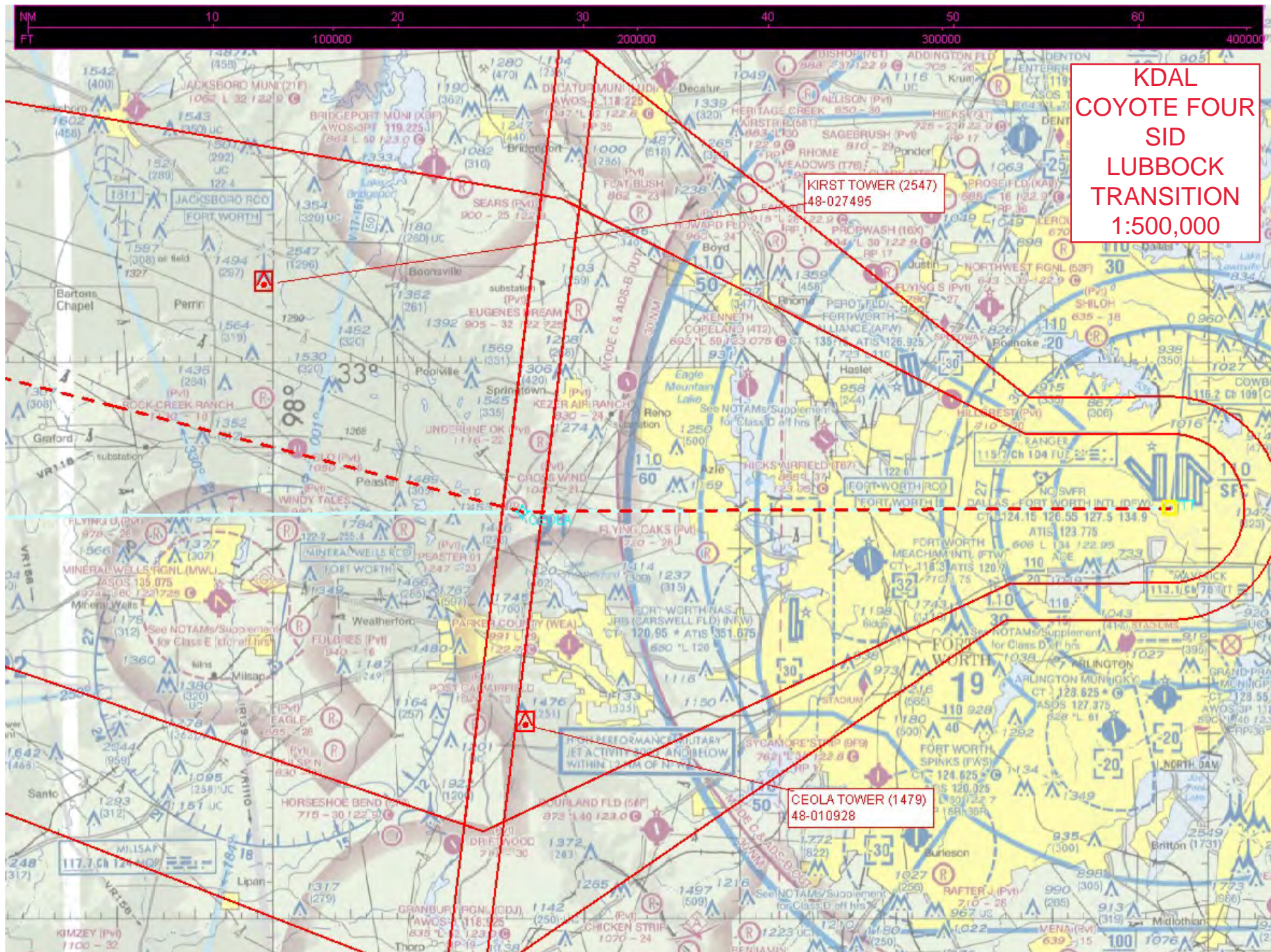


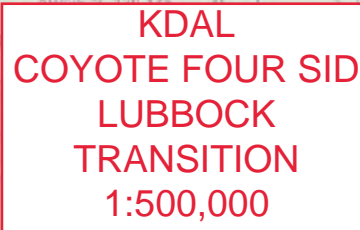


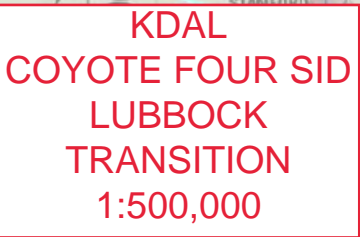


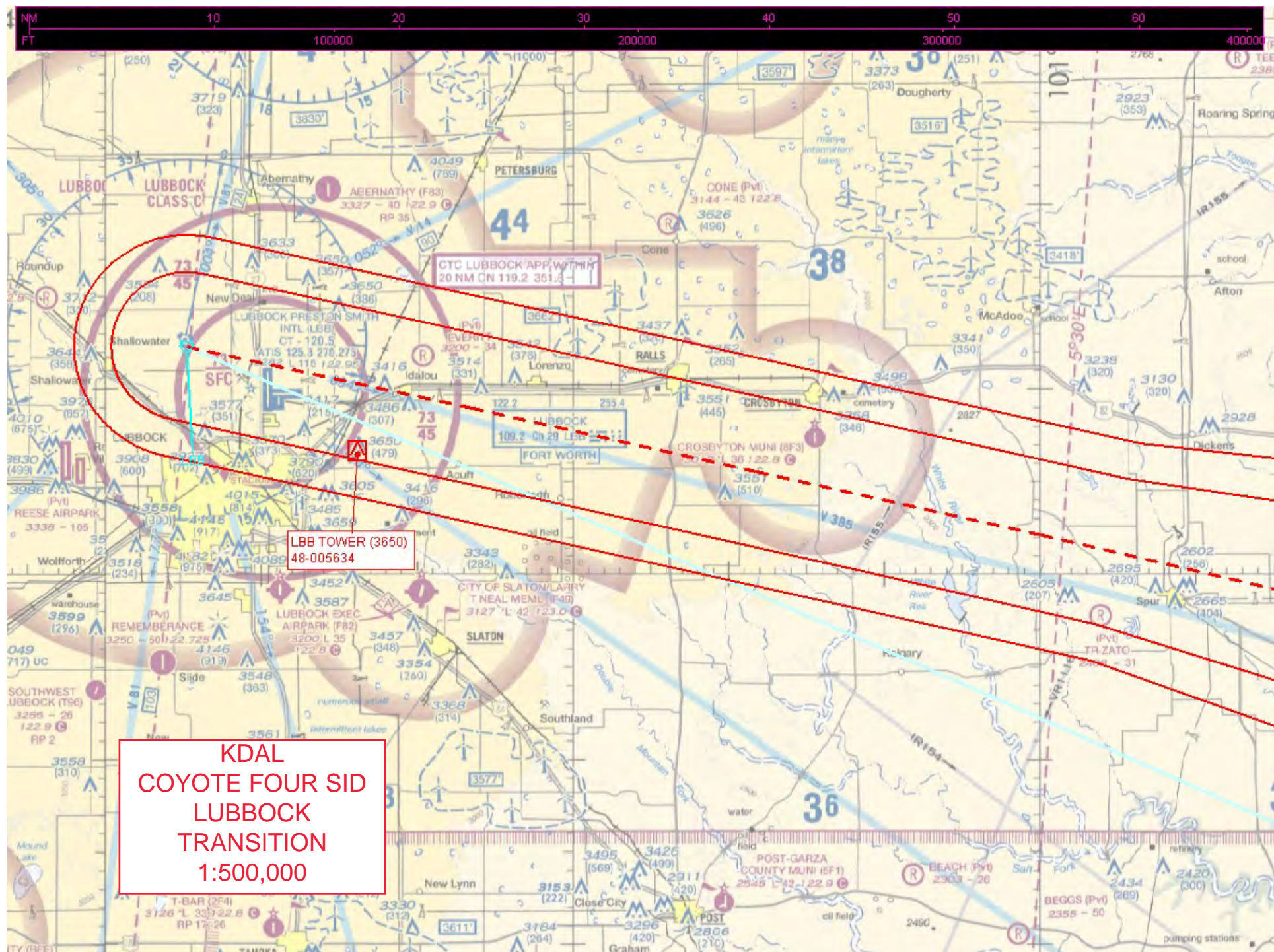


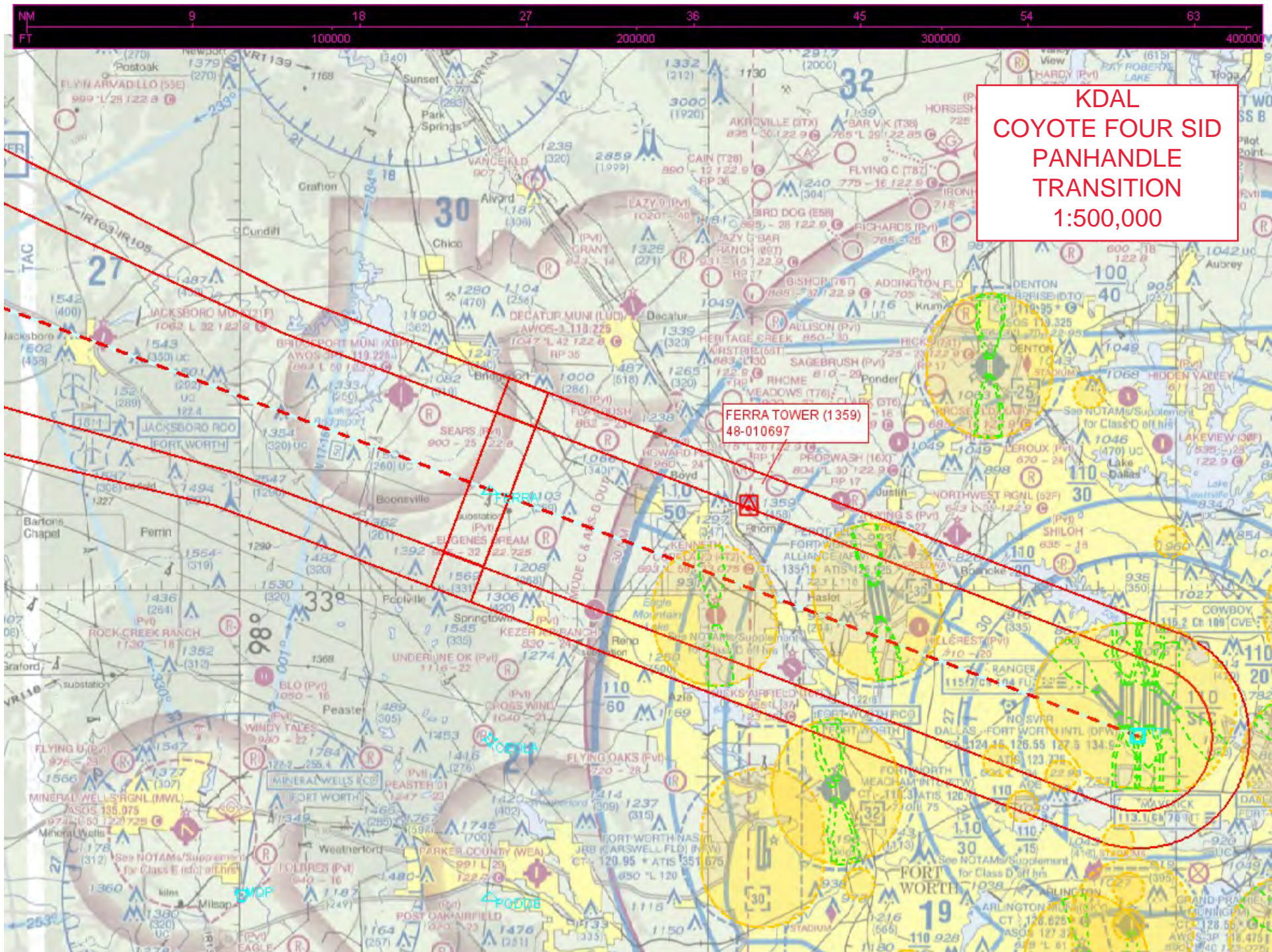


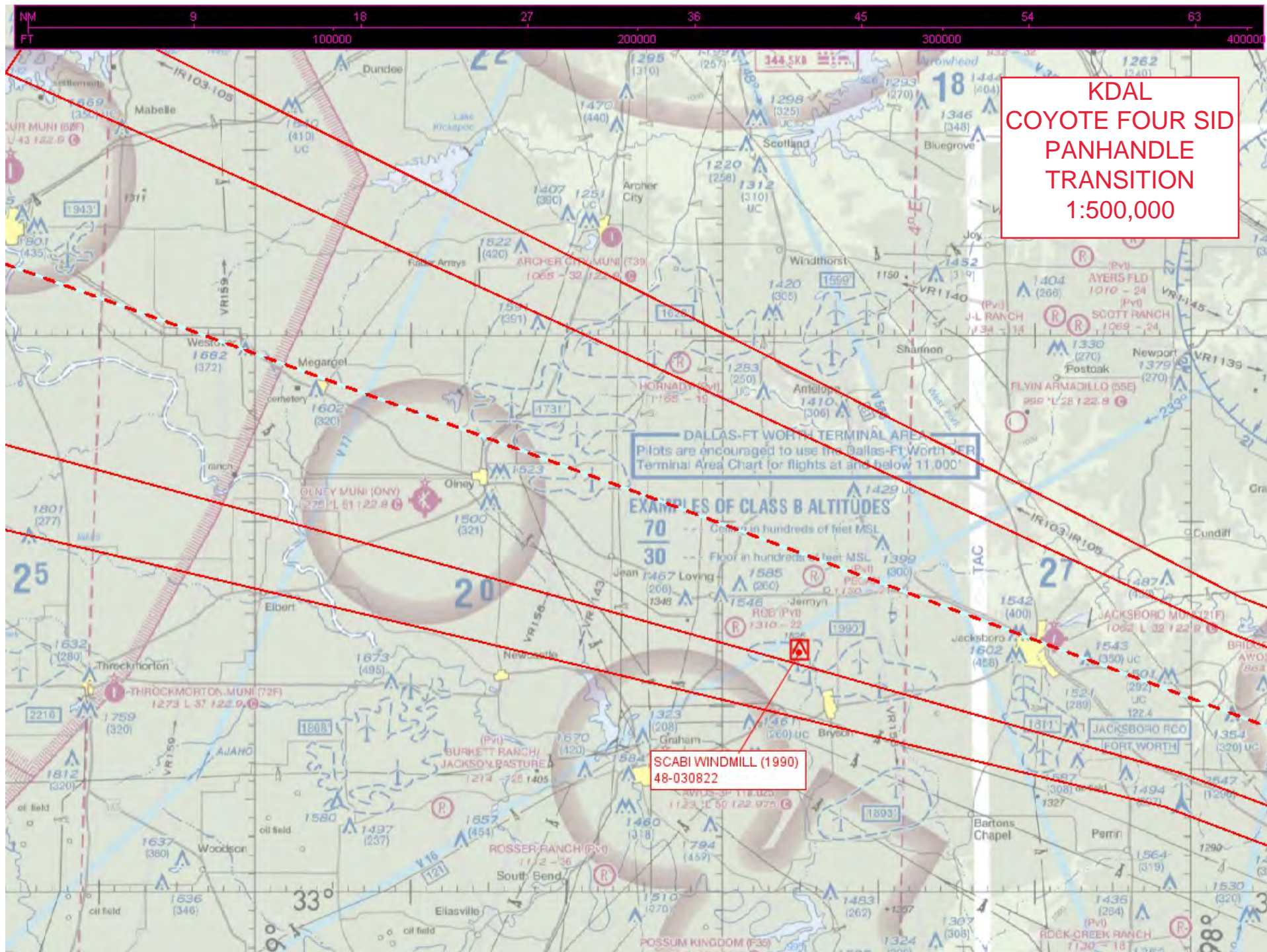


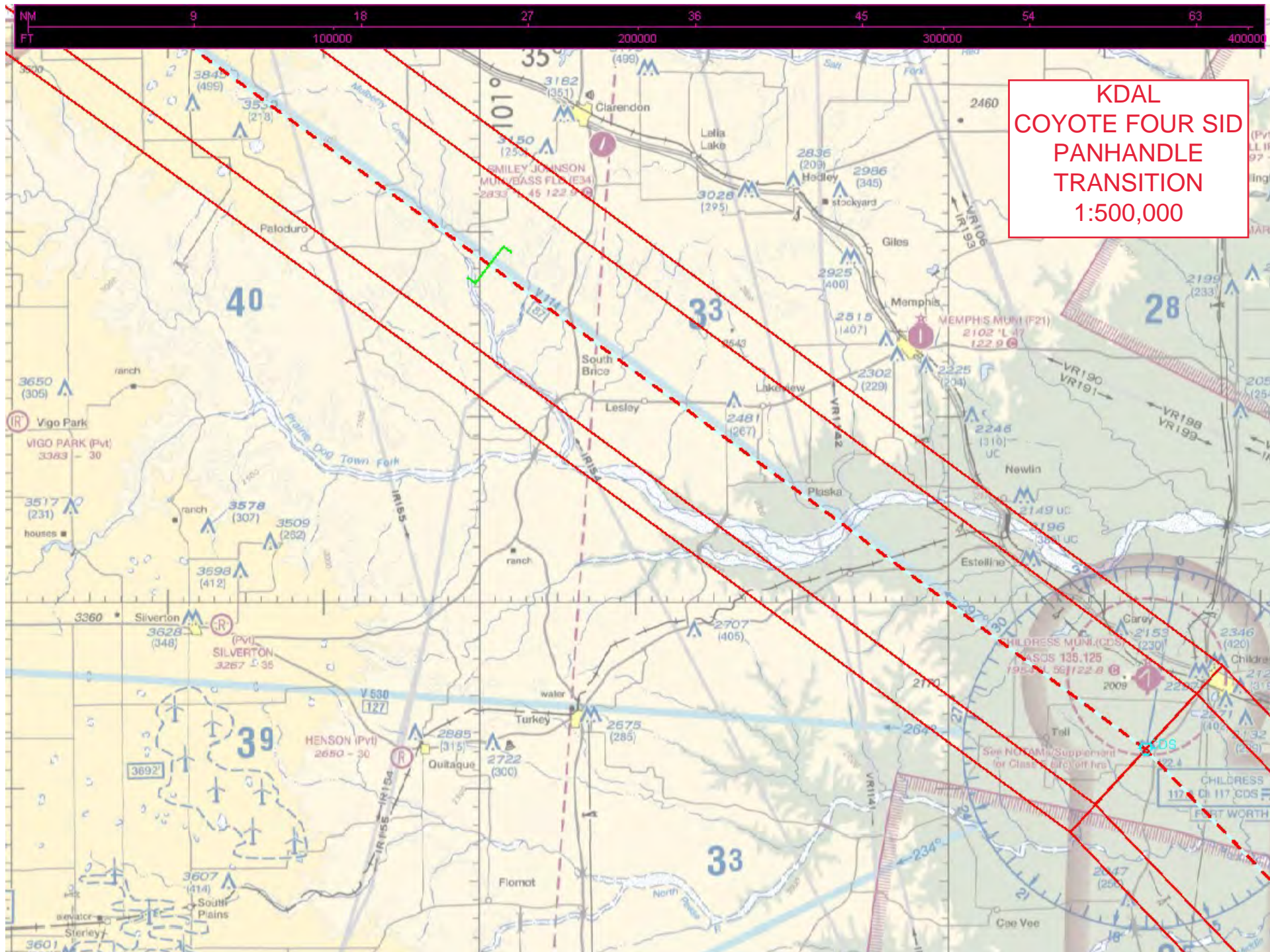




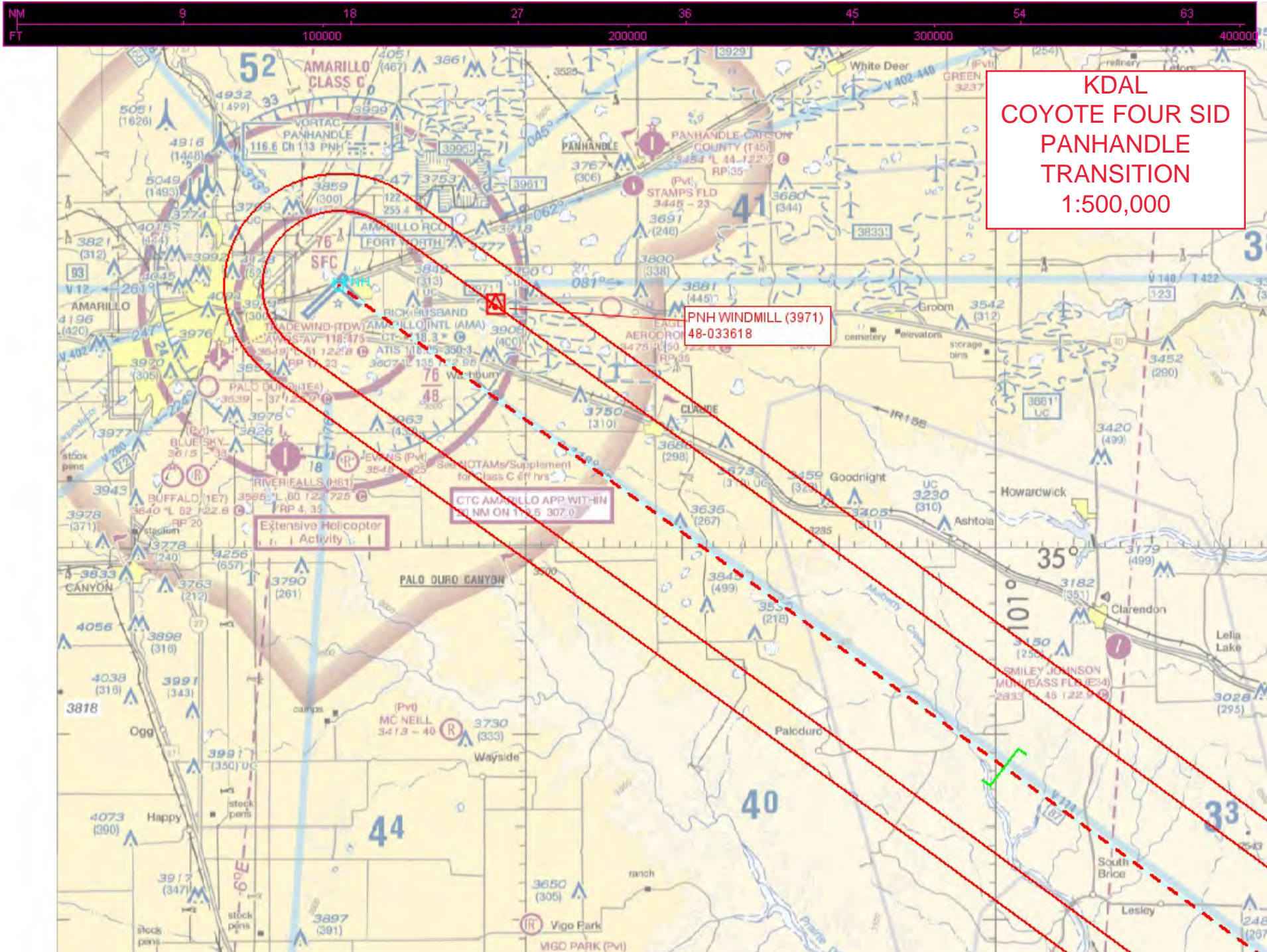




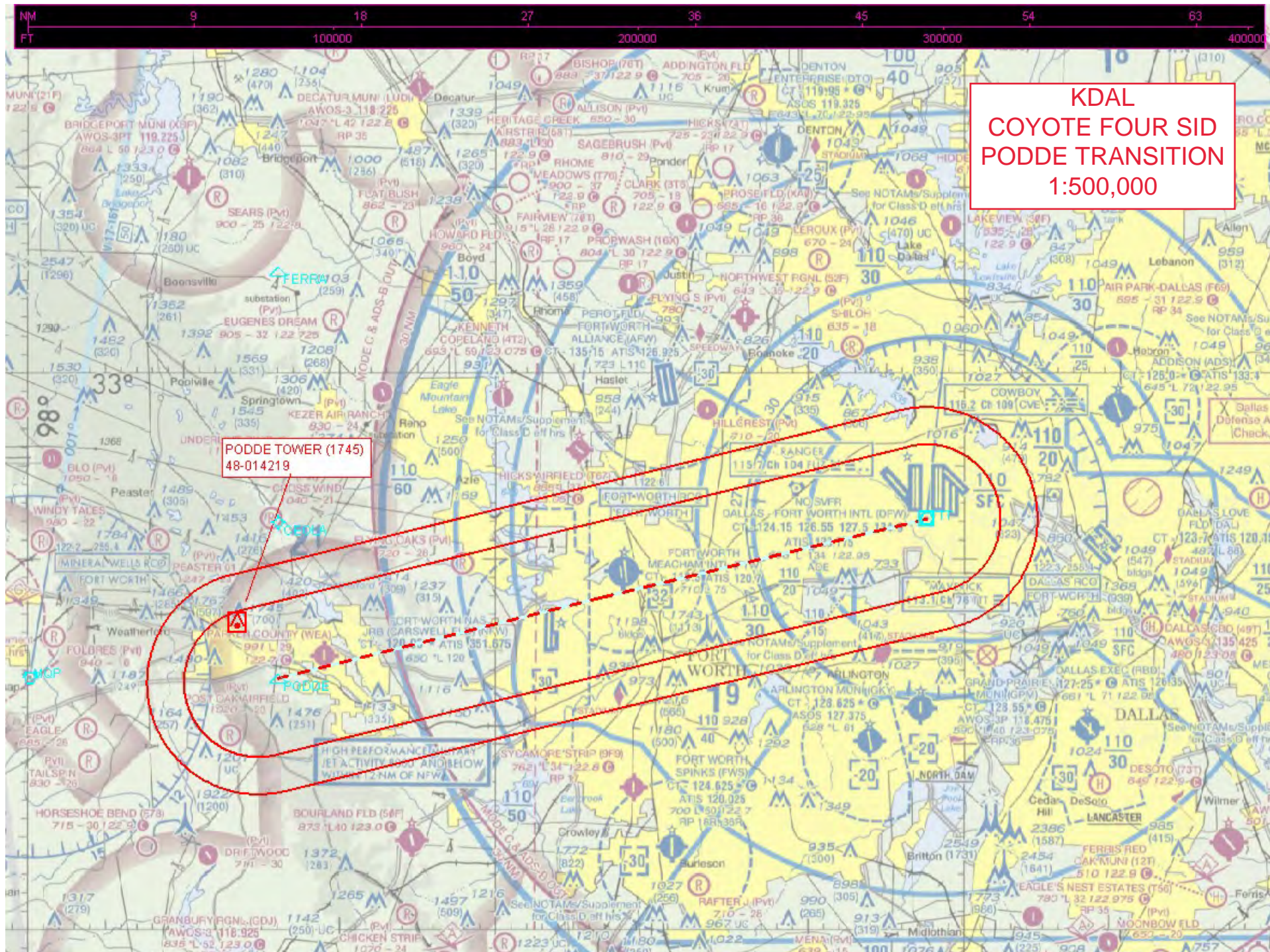


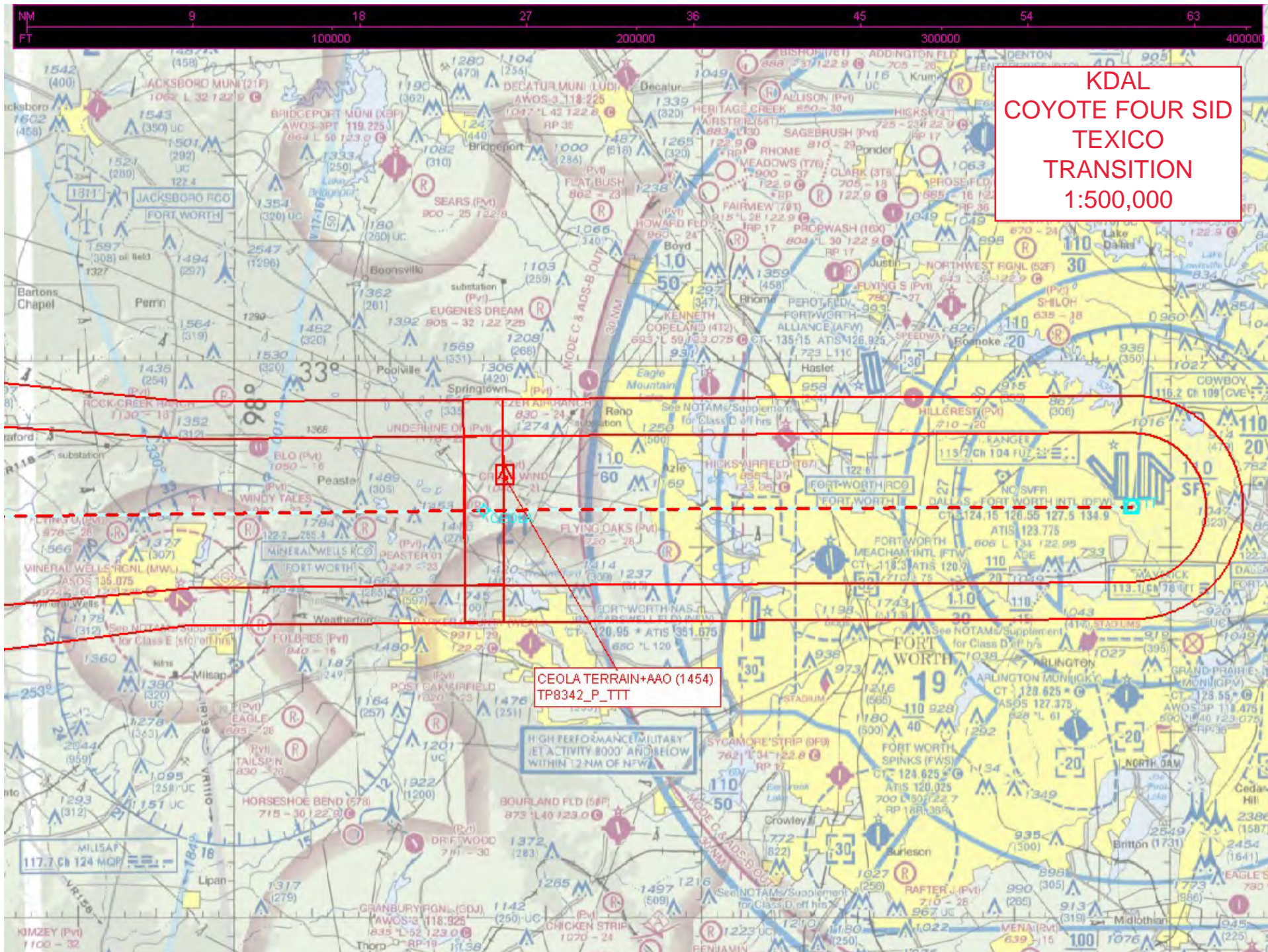


KDAL
COYOTE FOUR SID
PANHANDLE
TRANSITION
1:500,000



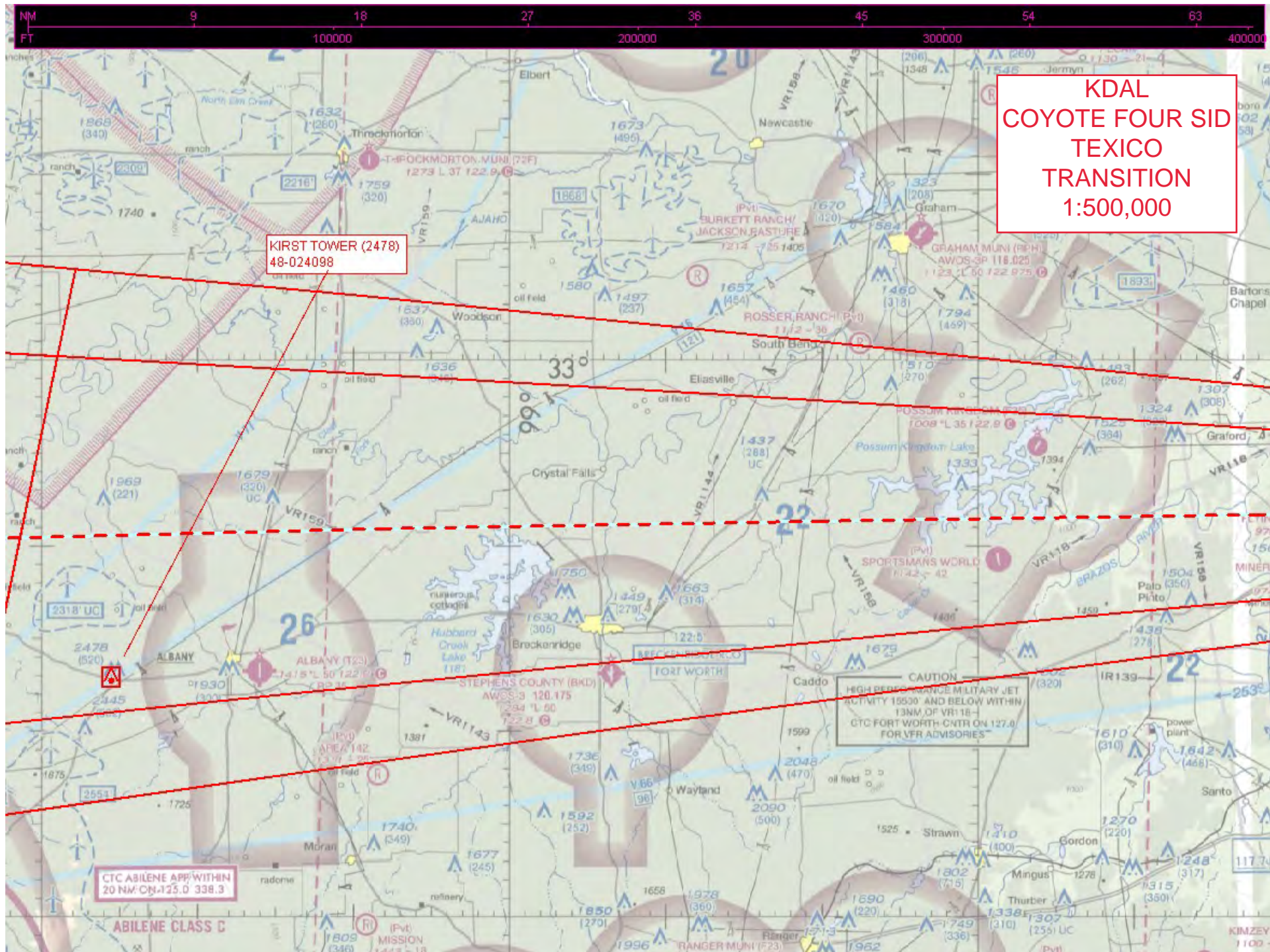
KDAL
COYOTE FOUR SID
PANHANDLE
TRANSITION
1:500,000





KDAL
COYOTE FOUR SID
TEXICO
TRANSITION
1:500,000

CEOLA TERRAIN+AAO (1454)
TP8342_P_TTT



KDAL
COYOTE FOUR SID
TEXICO
TRANSITION
1:500,000

KIRST TOWER (2478)
48-024098

CTC ABILENE APP WITHIN
20 NM ON 125.0 338.3

CAUTION
HIGH PERFORMANCE MILITARY JET
ACTIVITY 18500' AND BELOW WITHIN
13NM OF VR118 -
CTC FORT WORTH CNTR ON 127.0
FOR VFR ADVISORIES

ABILENE CLASS C

