

Flight Procedures Cover Page	Task Action: FLIGHT CHECK	Task Type: Textual DP	Estimated Chart Date: 06/17/2021	APWS Task ID: 8264CDC334D8433184C7A68F19CF3E6C	APWS Project ID: BF222B2D8F074A0585FD676782E085C5
Procedure: TAKE OFF MINIMUMS AMDT 6		Enroute: NO	Specialist: Dumar, Ralph		Agreement Number:
Airport ID: KEEN			Airport City: KEENE		State: NH
Facility ID:	Facility Type:	Flight Inspection Remark Type: New FC Slot			
<p>Procedure Comments: ACTIVE DATA USED.</p> <p>REMARKS: EEN VORMON CONTACT JOHN BORDY 405-954-0980.</p>					





# TAKEOFF MINIMUMS, (OBSTACLE) DEPARTURE PROCEDURES, AND DIVERSE VECTOR AREA (RADAR VECTORS)

20366

**KEENE, NH****Old**

DILLANT-HOPKINS (EEN)

TAKEOFF MINIMUMS AND (OBSTACLE) DEPARTURE PROCEDURES

AMDT 5 09OCT97 (97282) (FAA)

TAKEOFF MINIMUMS:

**Rwy 2**, 1200-2.**Rwy 14**, 2200-2 or std. with a min. climb of 450' per NM to 2500.**Rwy 20**, 1000-2 or std. with a min. climb of 320' per NM to 1700.**Rwy 32**, 1600-2.

DEPARTURE PROCEDURE:

**Rwy 2**, climb runway heading to 2100, then climbing left turn to assigned altitude direct EEN VORTAC before proceeding on course.**Rwy 14**, climb runway heading to 2500, then climbing right turn to assigned altitude direct EEN VORTAC before proceeding on course.**Rwy 20**, climb direct EEN VORTAC until passing 3000, if not at 3000 or above at EEN VORTAC climb in EEN holding pattern; (NE, right turns, 215° inbound) before proceeding on course.**Rwy 32**, climbing right turn heading 350° to 2100, then climbing left turn to assigned altitude direct EEN VORTAC before proceeding on course.

TAKEOFF OBSTACLE NOTES:

**Rwy 2**, 81' AGL trees 400' from DER and 500' right of centerline.**Rwy 32**, 89' AGL trees 800' from DER and 600' right of centerline.**LACONIA, NH**

LACONIA MUNI (LCI)

TAKEOFF MINIMUMS AND (OBSTACLE) DEPARTURE PROCEDURES

AMDT 4 07MAY09 (09127) (FAA)

TAKEOFF MINIMUMS:

**Rwy 8**, 600-1½ or std. w/ min. climb of 652' per NM to 1300.**Rwy 26**, 300-1 or std. w/ min. climb of 421' per NM to 900.

DEPARTURE PROCEDURE:

**Rwy 8**, climb to 2500 via heading 079° and ENE VORTAC R-315 inbound to 3500 before proceeding on course.**Rwy 26**, climb heading 264° to 2500 before proceeding on course.

TAKEOFF OBSTACLE NOTES:

**Rwy 8**, trees, terrain, and pole beginning 65' from DER, 20' right of centerline, up to 50' AGL/1112' MSL.

Trees and terrain beginning 93' from DER, 5' left of centerline, up to 71' AGL/590' MSL.

**Rwy 26**, trees and antenna on tower beginning 123' from DER, 42' left of centerline, up to 84' AGL/743' MSL.

Trees beginning 2145' from DER, 626' right of centerline, up to 93' AGL/672' MSL.

**LAWRENCE, MA**

LAWRENCE MUNI (LWM)

TAKEOFF MINIMUMS AND (OBSTACLE) DEPARTURE PROCEDURES

AMDT 5 03JAN19 (19003) (FAA)

TAKEOFF MINIMUMS:

**Rwy 5**, 300-1½ or std. w/min. climb of 435' per NM to 500.**Rwy 14**, 300-1 or std. w/min. climb of 625' per NM to 600.**Rwy 23**, 300-1 or std. w/min. climb of 350' per NM to 400.

DEPARTURE PROCEDURE:

**Rwy 5**, climb heading 053° to 1100 before turning left.

TAKEOFF OBSTACLE NOTES:

**Rwy 5**, vegetation 174' from DER, 529' right of centerline, 25' AGL/143' MSL.

Tree 387' from DER, 388' left of centerline, 69' AGL/150' MSL.

Tree 591' from DER, 546' left of centerline, 92' AGL/154' MSL.

Tree 598' from DER, 561' left of centerline, 100' AGL/162' MSL.

Tree 644' from DER, 566' right of centerline, 54' AGL/186' MSL.

Trees beginning 689' from DER, 403' right of centerline, up to 63' AGL/198' MSL.

Tree 1660' from DER, 849' right of centerline, 65' AGL/225' MSL.

Trees beginning 1668' from DER, 257' right of centerline, up to 68' AGL/228' MSL.

Tree 1683' from DER, 269' left of centerline, 60' AGL/180' MSL.

Tree 1694' from DER, 345' left of centerline, 67' AGL/181' MSL.

Tree 1720' from DER, 303' left of centerline, 54' AGL/182' MSL.

Tree 1832' from DER, 207' left of centerline, 54' AGL/184' MSL.

Tree 2240' from DER, 551' left of centerline, 89' AGL/194' MSL.

Tree 2288' from DER, 637' left of centerline, 98' AGL/198' MSL.

Trees beginning 2339' from DER, 342' left of centerline, up to 104' AGL/199' MSL.

Antenna 2927' from DER, 182' left of centerline, 101' AGL/211' MSL.

Trees beginning 3562' from DER, 413' right of centerline, up to 89' AGL/327' MSL.

Trees beginning 3831' from DER, 340' right of centerline, up to 93' AGL/331' MSL.

Tree, pole beginning 4026' from DER, 5' right of centerline, up to 95' AGL/335' MSL.

Tree 4417' from DER, 176' left of centerline, 94' AGL/247' MSL.

Trees beginning 4421' from DER, 49' left of centerline, up to 108' AGL/264' MSL.

Trees beginning 4614' from DER, 96' left of centerline, up to 93' AGL/276' MSL.

Trees beginning 4727' from DER, 155' left of centerline, up to 90' AGL/280' MSL.

Trees beginning 4745' from DER, 45' left of centerline, up to 85' AGL/282' MSL.

CON'T

# TAKEOFF MINIMUMS, (OBSTACLE) DEPARTURE PROCEDURES, AND DIVERSE VECTOR AREA (RADAR VECTORS)

20366

NE-1

## Federal Aviation Administration Categorical Exclusion Declaration

**Date:** 12/19/19

**IFP:** Landry, Steven (Steven.L-CTR.Landry@faa.gov)

**Airport Contact:** -

**Request ID:** KEEN\_19125

**Single or Multiple Procedure:** Multiple

**Procedure Name(s):** DEPARTURE PROCEDURES ILS or LOC RWY 2 RNAV (GPS) RWY 2 VOR RWY 2

**Procedure Request Description:**

DEPARTURE PROCEDURES: Change departure procedures to remove EEN VORTAC and add Visual Climb Over Airport (VCOA) procedure.

ILS or LOC RWY 2: (1) Delete EEN VOR R-011 radial; (2) delete holding at EEN VOR; (3) delete EEN VOR feeder route; (4) change MSA center point from EEN VOR to KEEN airport reference point; (5) replace "EEN VORTAC" in missed approach instruction with "CAHOW INT"; (6) delete current missed approach fix and change current alternate missed approach fix to primary (only) missed approach fix; (7) delete EEN VOR frequencies and and radials from missed approach fix; and (8) delete EEN VOR R-192 radial.

RNAV (GPS) RWY 2: (1) Add TAA design; (2) delete BRATS feeder route; (3) delete BRATS procedure note; (4) replace missed approach instruction with "Climbing left turn direct JUNPU and hold"; (5) Remove TEYRU, UGUYU, and WINVI waypoints, as well as 288°, 198°, and 108° tracks, from missed approach instruction; (6) delete EEN VOR; (7) delete LURCH feeder route; (8) delete GDM VOR feeder route; (9) add holding at JUNPU; and (10) delete GDM VOR procedure note.

VOR RWY 2: Cancel procedure.

**Declaration of Exclusion:**

The FAA has reviewed the above referenced proposed action and it has been determined, by the undersigned, to be categorically excluded from further environmental documentation according to FAA Order 1050.1, "Environmental Impacts: Policies and Procedures." The implementation of this action will not result in any extraordinary circumstances in accordance with FAA Order 1050.1.

**Basis for this Determination:**

This review was conducted in accordance with policies and procedures in Department of Transportation Order 5610.1, "Procedures for Considering Environmental Impacts" and FAA Order 1050.1.

**The applicable Categorical Exclusion is:**

**5-6.5.k:** Publication of existing air traffic control procedures that do not essentially change existing tracks, create new tracks, change altitude, or change concentration of aircraft on these tracks. (ATO, AVS)

**The above flight procedure has been developed within the accepted parameters.**

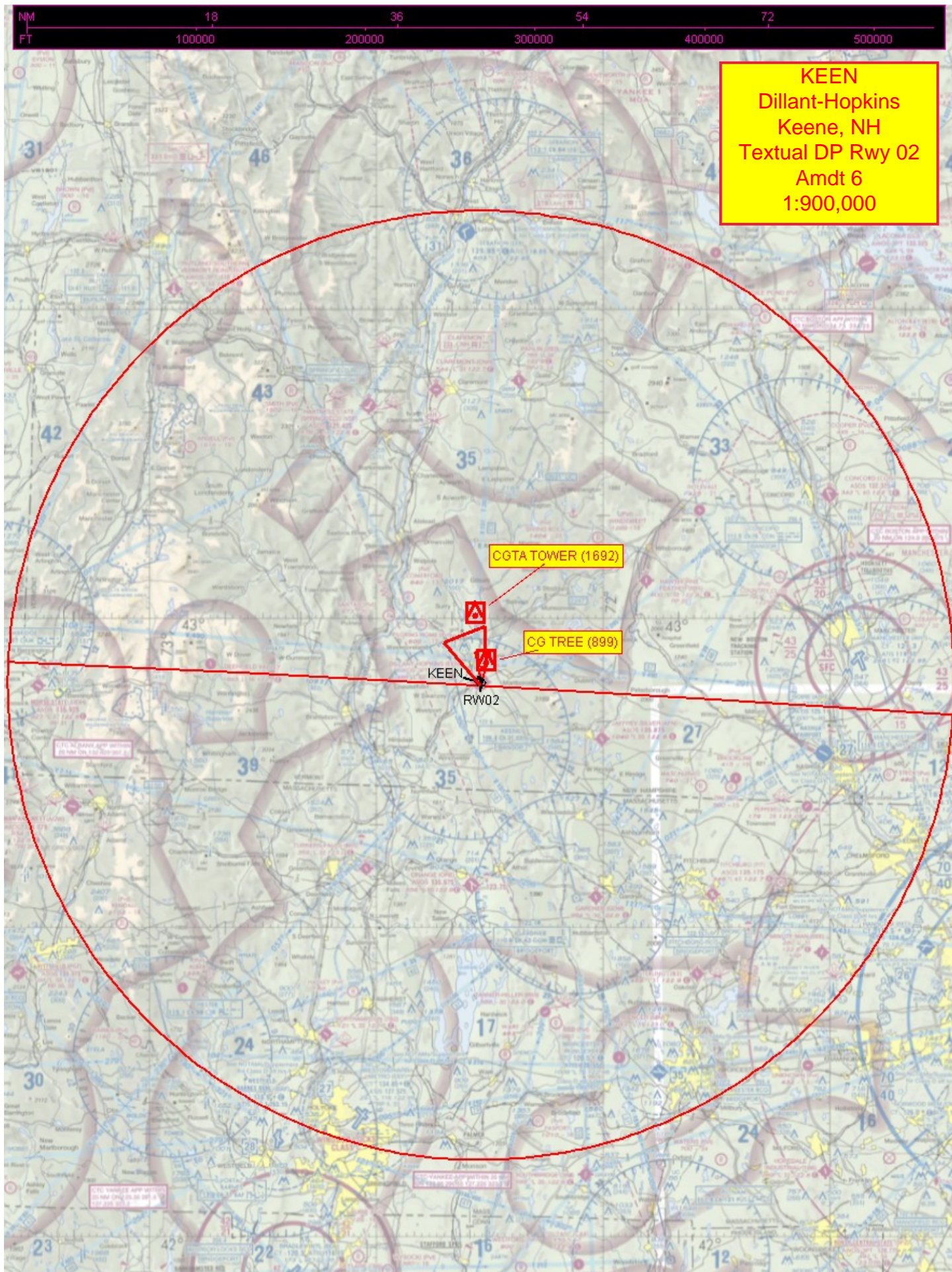
Concurrence/Reviewed By: Andrew Pieroni Date: December 19, 2019

Title: Environmental Protection Specialist

Approved By: Charles J Gibson Date: 12/19/2019

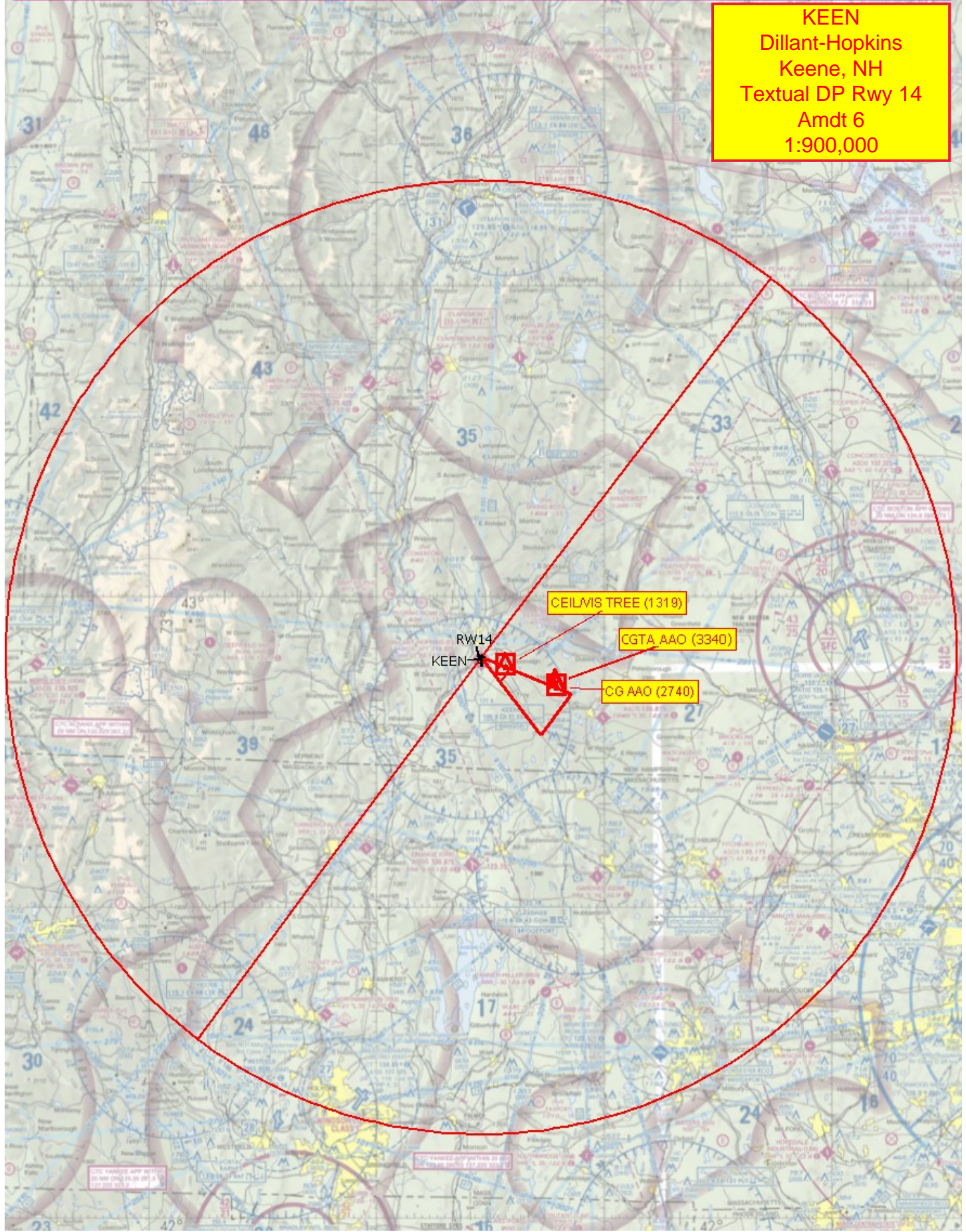
Title: Team Manager, ECINA, OSG/ESC



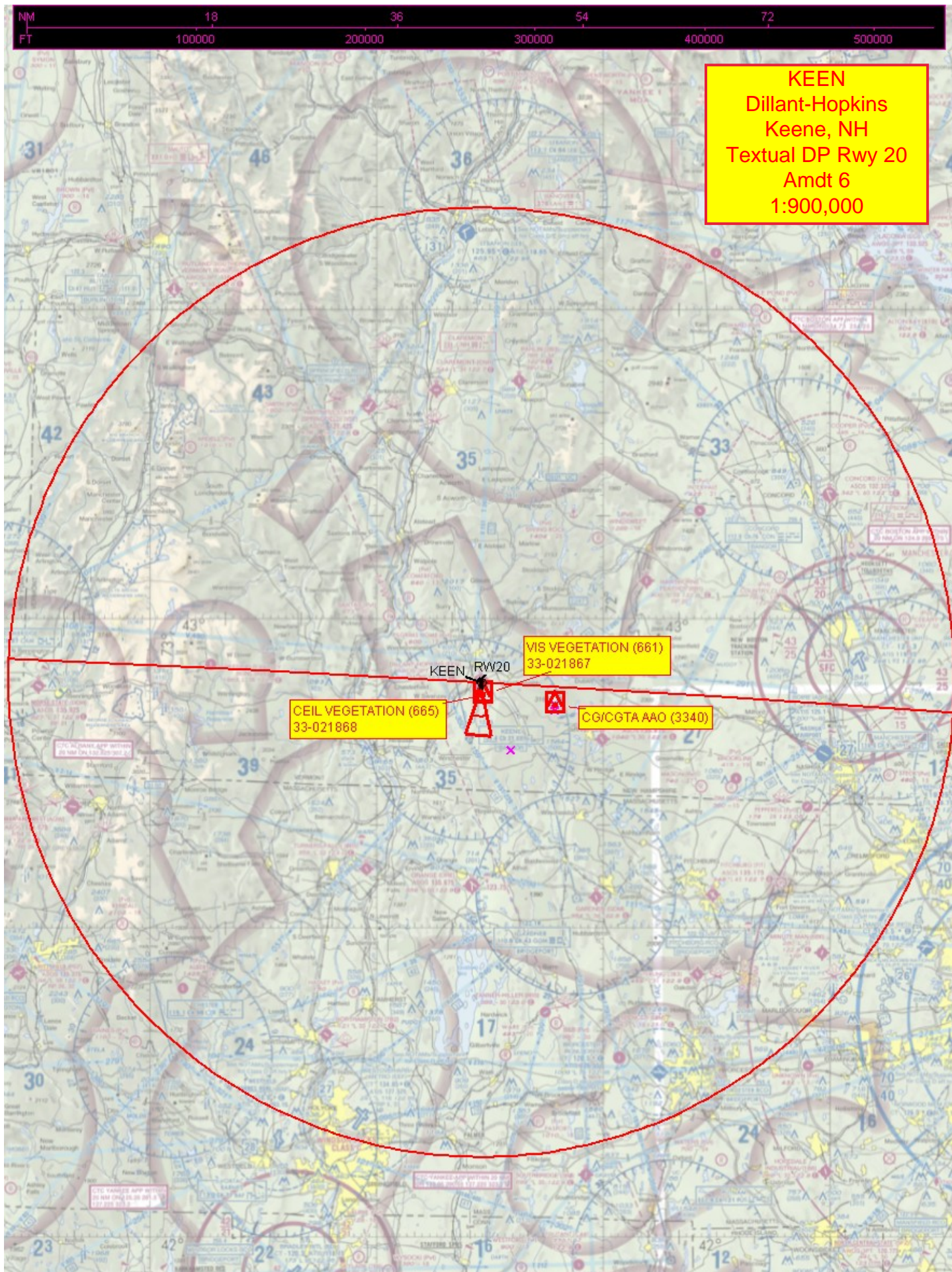




KEEN  
Dillant-Hopkins  
Keene, NH  
Textual DP Rwy 14  
Amdt 6  
1:900,000







KEEN  
Dillant-Hopkins  
Keene, NH  
Textual DP Rwy 20  
Amdt 6  
1:900,000

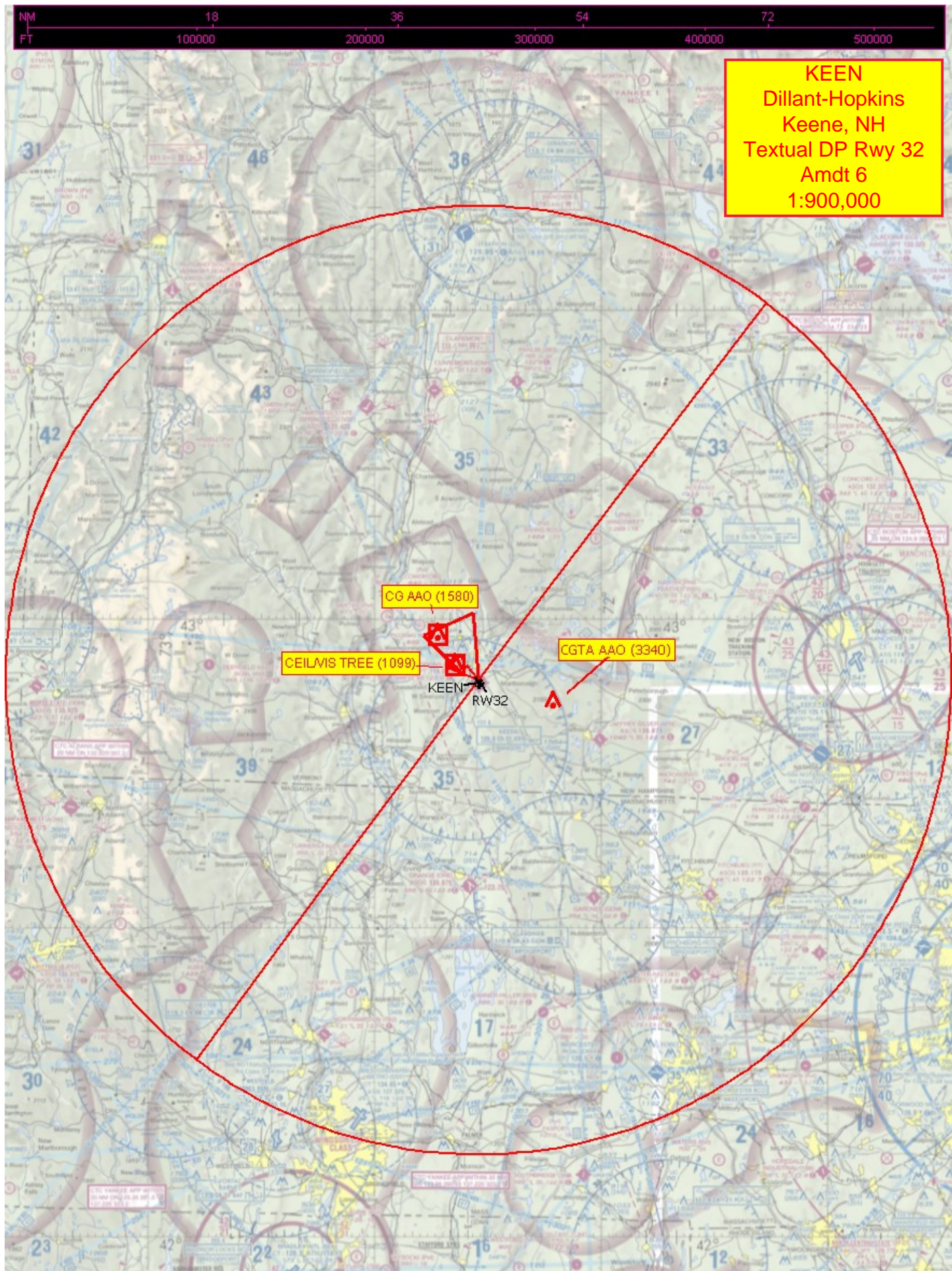
VIS VEGETATION (661)  
33-021867

CEIL VEGETATION (665)  
33-021868

CG/CGTA AAO (3340)

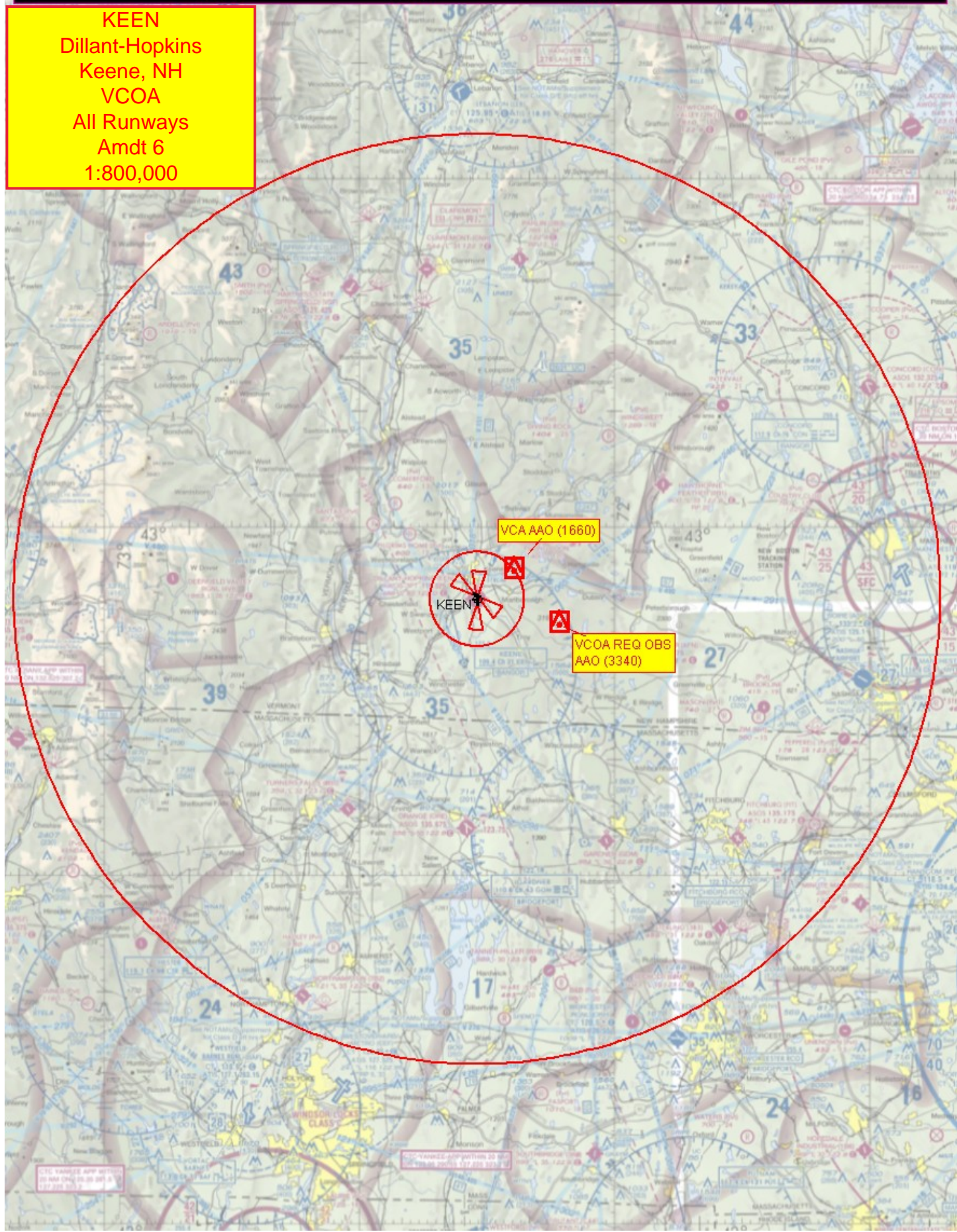
KEEN RW20







**KEEN**  
 Dillant-Hopkins  
 Keene, NH  
 VCOA  
 All Runways  
 Amdt 6  
 1:800,000





NM  
FT

2

4

6

8

20000

40000

KEEN  
Dillant-Hopkins  
Keene, NH  
Textual DP Rwy 02  
Amdt 6  
1:100,000

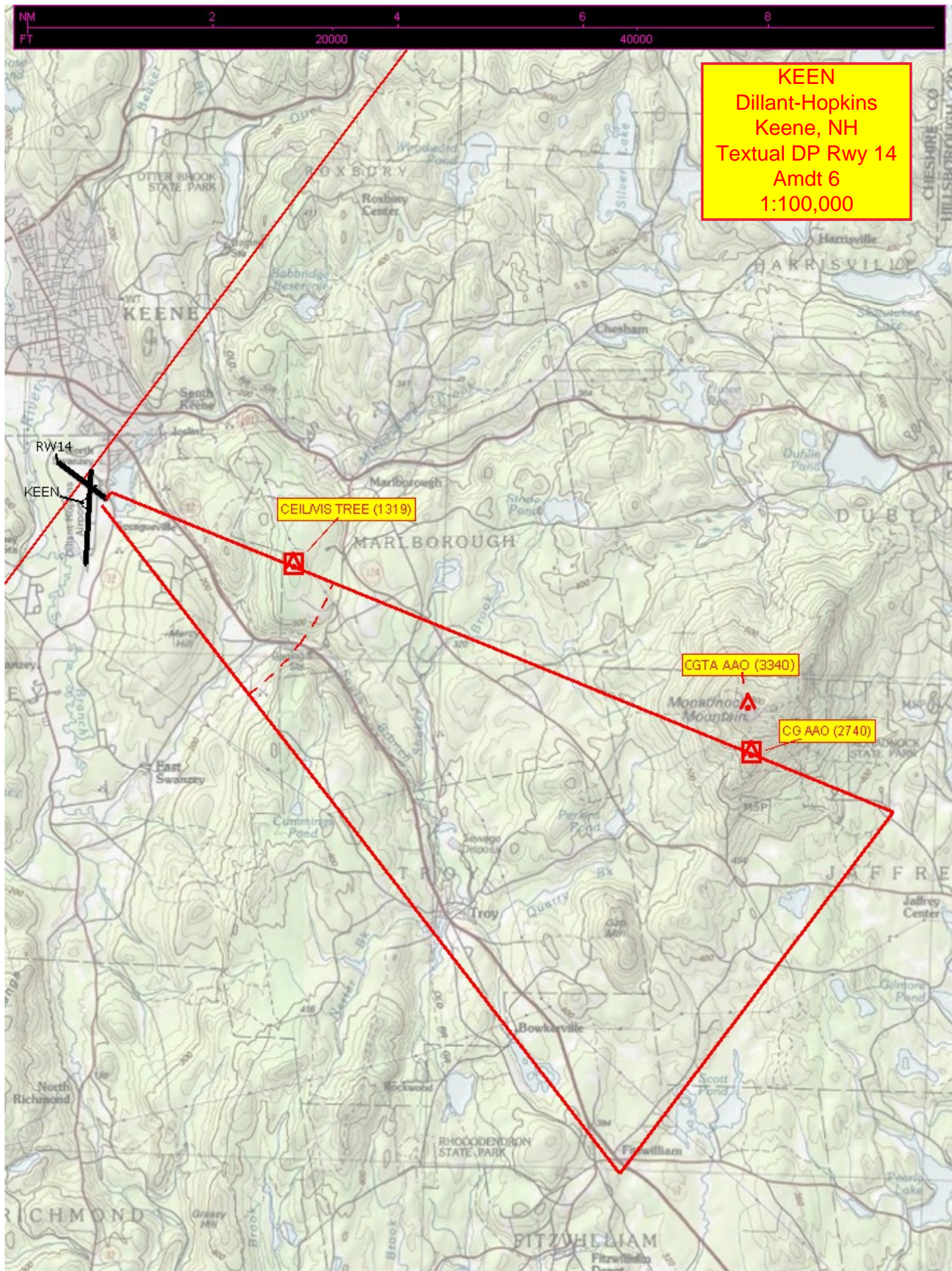
CGTA TOWER (1692)

CG TREE (899)

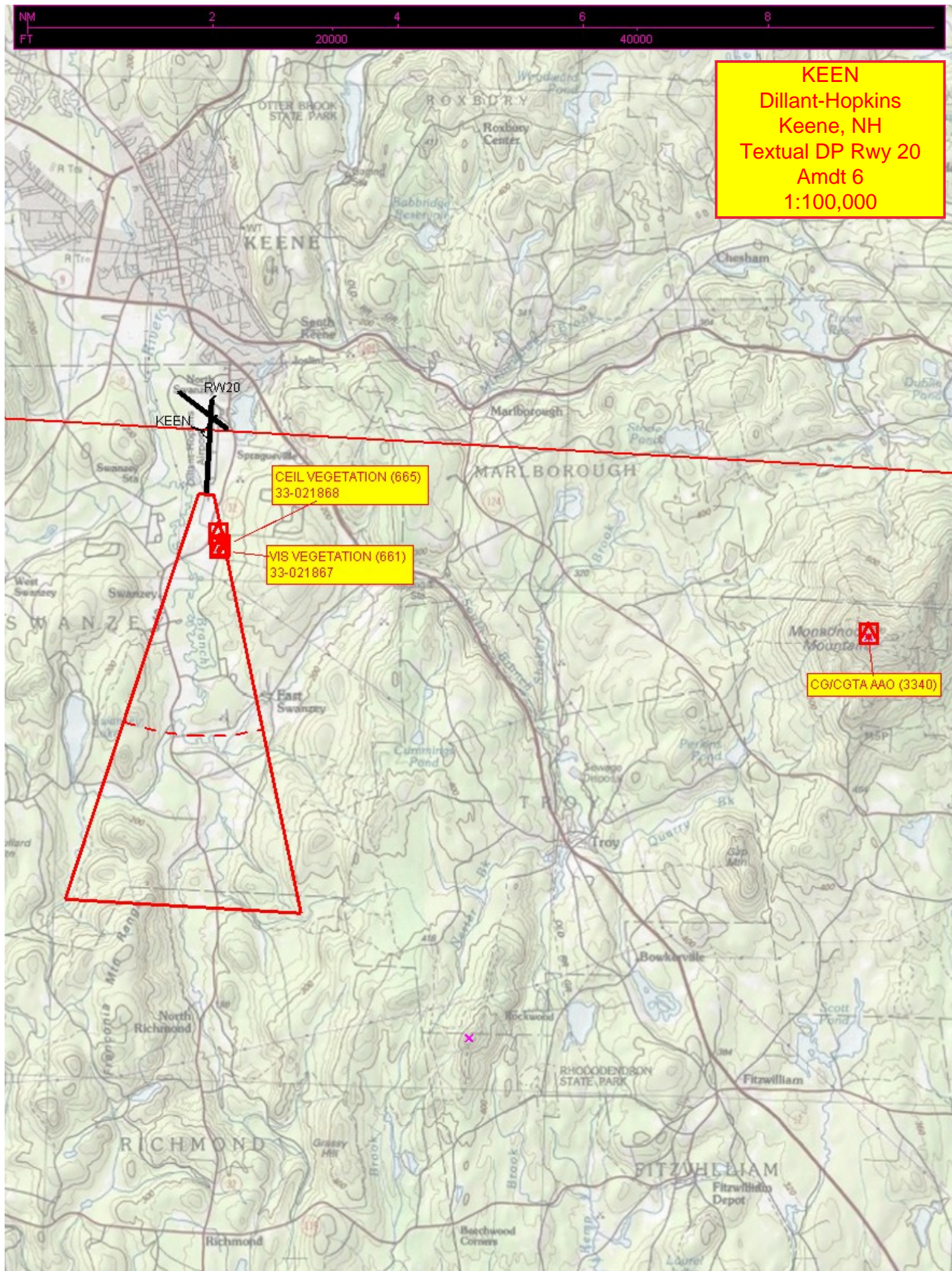
KEEN

RW02



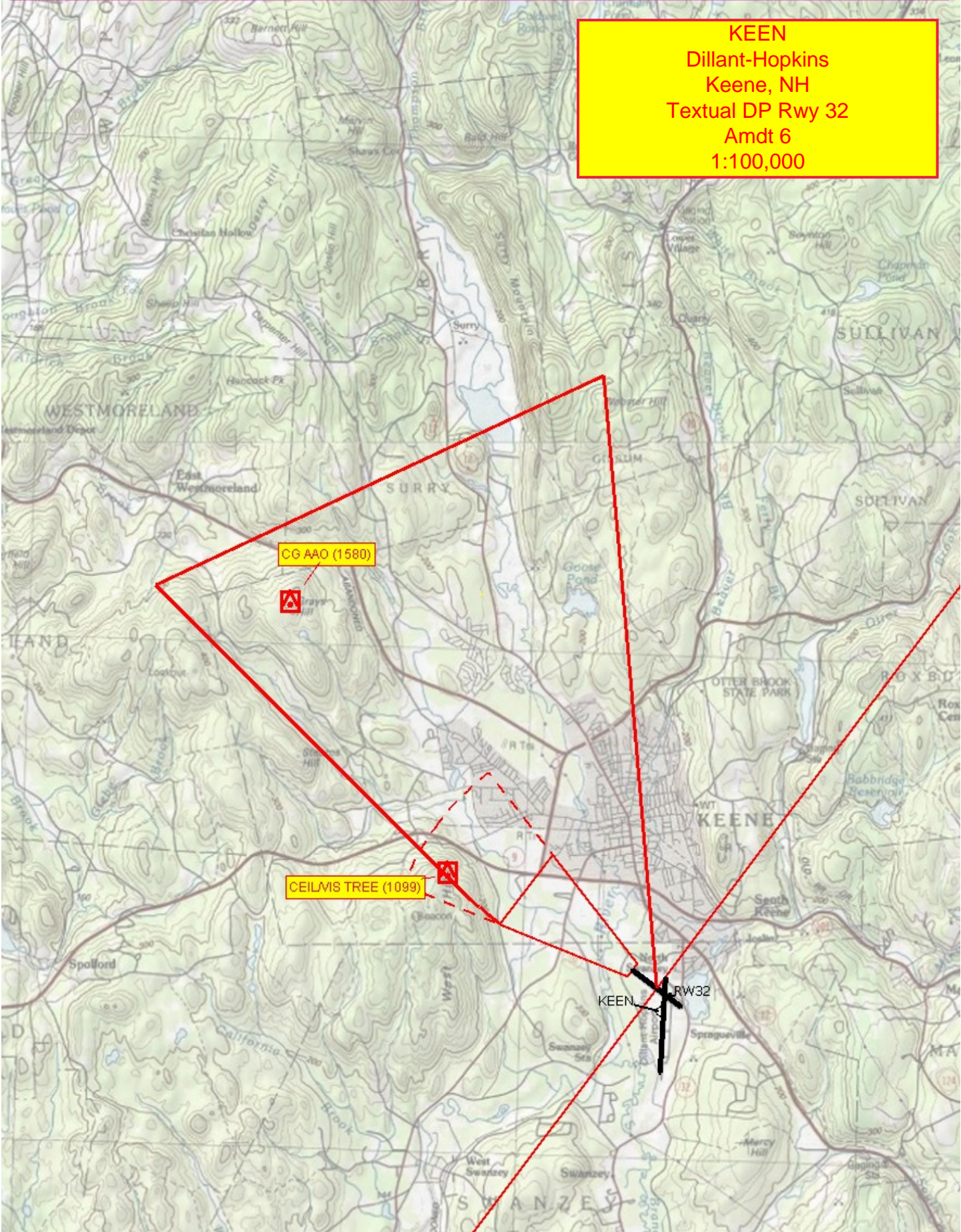








KEEN  
Dillant-Hopkins  
Keene, NH  
Textual DP Rwy 32  
Amdt 6  
1:100,000





NM  
FT

2

4

6

8

20000

40000

M

KEEN  
Dillant-Hopkins  
Keene, NH  
VCOA  
All Runways  
Amdt 6  
1:100,000

