

Flight Procedures Cover Page	Task Action: P-NOTAM	Task Type: IAP	Estimated Chart Date: 10/07/2021	APWS Task ID: 8222823438C04FAEB18EF0FDB67FE25C	APWS Project ID: 566D444FFD3C4681BA1BE3B3BAA62AC3
Procedure: RNAV (GPS) RWY 17 AMDT 0B		Enroute: NO	Specialist: Brooks, Charles		Agreement Number:
Airport ID: KWWR			Airport City: WOODWARD		State: OK
Facility ID:	Facility Type:	Flight Inspection Remark Type:			
<div>Procedure Comments: P-NOTAM</div> <div>CIRCLING RADII INCREASE.</div> <div>CONTACT JASON KRETSCHMER, AJV-A421, 405-954-4019</div> <div><div>Digitally signed by JASON KRETSCHMER Aug 16, 2021</div><div><div>QUALITY 9 CHECKED</div><div>QUALITY 47 CHECKED</div></div></div>					

WAAS CH 70614 W17A	APP CRS 172°	Rwy Idg 5502 TDZE 2176 Apt Elev 2189
--	------------------------	---

OLD

RNAV (GPS) RWY 17

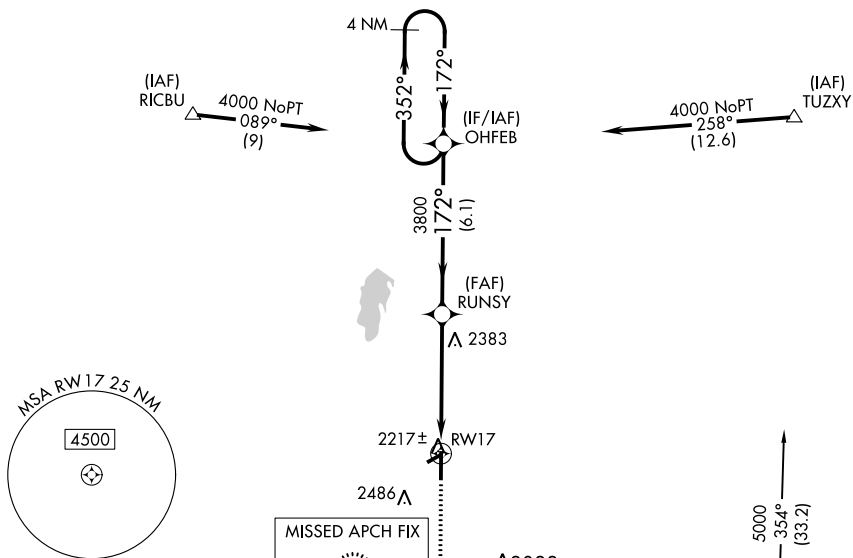
RNP APCH.

T Baro-VNAV and VDP NA when using Gage altimeter setting. For uncompensated Baro-VNAV systems, LNAV/VNAV NA below -19°C or above 54°C. When local altimeter setting not received, use Gage altimeter setting and increase all DA/MDA 40 feet. Inop table does not apply. Circling Rwy 5, 23 NA at night.

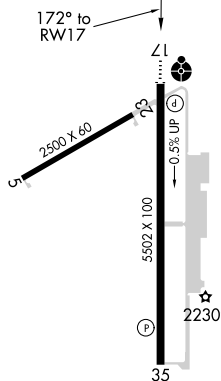
ODALS

AWOS-3
118.425

KANSAS CITY CENTER
126.95 379.2

UNICOM
122.8 (CTAF) 

ELEV	2189		TDZE	2176
------	------	--	------	------

[illegible]

