

Flight Procedures Cover Page	Task Action: FLIGHT CHECK	Task Type: IAP	Estimated Chart Date: 07/11/2024	APWS Task ID: 81D3A3CFD6844E03B279E6C9F3AA68E4	APWS Project ID: CB608286F1A24EDAA494952352BD26CB
Procedure: RNAV (RNP) Z RWY 35L AMDT 2		Enroute: NO	Specialist: Dumar, Ralph		Agreement Number:
Airport ID: KSDF			Airport City: LOUISVILLE		State: KY
Facility ID:	Facility Type:	Flight Inspection Remark Type: Hold FC Slot			
<div>Procedure Comments: KSDF ACTIVE DATA USED. APPROVAL LETTER: MANDATORY ALTITUDES AT INTERMEDIATE FIXES AABEY AND DPAUW</div> <div>REMARKS: PUBLISHED INTERMEDIATE SEGMENTS REPLACED. MINIMUMS LOWERED. CONTACT RAKE MCGRAW (405) 954-8711</div> <div>04/04/24: THIS IS AN UPDATED COPY OF THE FORM DEVELOPED ON 01/23/24: 1. ADDED MAX 210 KNOTS AIRSPEED AT AWLEE - PREVIOUSLY OMITTED.</div> <div>8260-2: AABEY, DPAUW, ORIG 04/04/24: THIS IS AN UPDATED COPY OF THE FORM DEVELOPED ON 03/15/24. 1. REMOVED KSDF ILS OR LOC RWY 35L, ILS RWY 35L (SA CAT I), AND ILS RWY 35L (CAT II & III) FROM FIX USE.</div> <div>8260-2: AABEY, DPAUW, ORIG 05/03/24: THIS IS AN UPDATED COPY OF THE FORM DEVELOPED ON 03/15/24. 1. REMOVED KSDF RNAV (GPS) Y RWY 35L FROM FIX USE.</div>					

QUALITY
15
CHECKED

QUALITY
34
CHECKED

FIPC BASIC FORM						
PROCEDURE: RNAV (RNP) Z RWY 35L AMDT 2			AIRPORT NAME: LOUISVILLE MUHAMMAD ALI INTL		AIRPORT ID: KSDF	SPECIAL CONTROL NO: AG-04-132-24
FAC ID: KSDF35L.02Z		CITY: LOUISVILLE			ST: KY	ORIG CHART DATE: 07/11/2024
DFL TYPE: PROC/P	THIRD PARTY: <input type="checkbox"/> YES	EST. TIME ON SITE: 0.4	REIMB. NUMBER:	PTS TASK ID: 81D3A3CFD6844E03B279E6C9F3AA68E4		
PREFLIGHT NOTES						
REVIEWER:					DATE:	
COMMENTS:					CHECK ONE:	
					<input type="checkbox"/> FLT CK REQ <input type="checkbox"/> NFCR <input type="checkbox"/> REJECT	
						YES
					CPV COMPLETE?	X
PROCEDURE RESULTS						
INSPECTION DATE: 04/24/2024	CREW #: VN327	N #: N79	INSTRUMENT PROCEDURE STATUS: <input checked="" type="checkbox"/> SAT <input type="checkbox"/> SAT W/CHANGES <input type="checkbox"/> UNSAT		ARINC CODING: <input checked="" type="checkbox"/> SAT <input type="checkbox"/> SAT/GOLD <input type="checkbox"/> UNSAT	
FLIGHT INSPECTOR SIGNATURE: jeffrey eckman @ 04/24/2024 19:45			PRINTED NAME: ECKMAN, JEFFREY ALAN			NOTAM INITIATED? <input type="checkbox"/> YES <input checked="" type="checkbox"/> NO
FLIGHT INSPECTOR REMARKS: Procedure is SAT as proposed.						
IN-FLIGHT OBSTACLE REPORT						
OBSTRUCTION ID #:	COORDINATES OR LOCATION:	GNSS ALTITUDE (MSL):	BAROMETRIC ALTITUDE (MSL):		HEIGHT ABOVE GROUND LEVEL:	



Federal Aviation Administration

Memorandum

Date: November 14, 2023
To: Tom Lattimer, FAA CSA OSG PBN Co-Lead
From: Jeffrey Chester, TCID Airspace and Procedures Manager
Prepared by: Scott Enander, Senior ATC Specialist, NAVTAC Support
Subject: Letter of Approval Request KSDF RNAV (RNP) Z RWY 35L

KSDF RNAV RNP Z RWY 35L: AABEY and DPAUW Mandatory Altitude.

KSDF TRACON requests AFS approval to chart mandatory altitude restrictions at the following fixes; AABEY and DPAUW at 6000ft MSL for RNAV RNP Z RWY 35L instrument approach procedure for Louisville Muhammad Ali International Airport (KSDF).

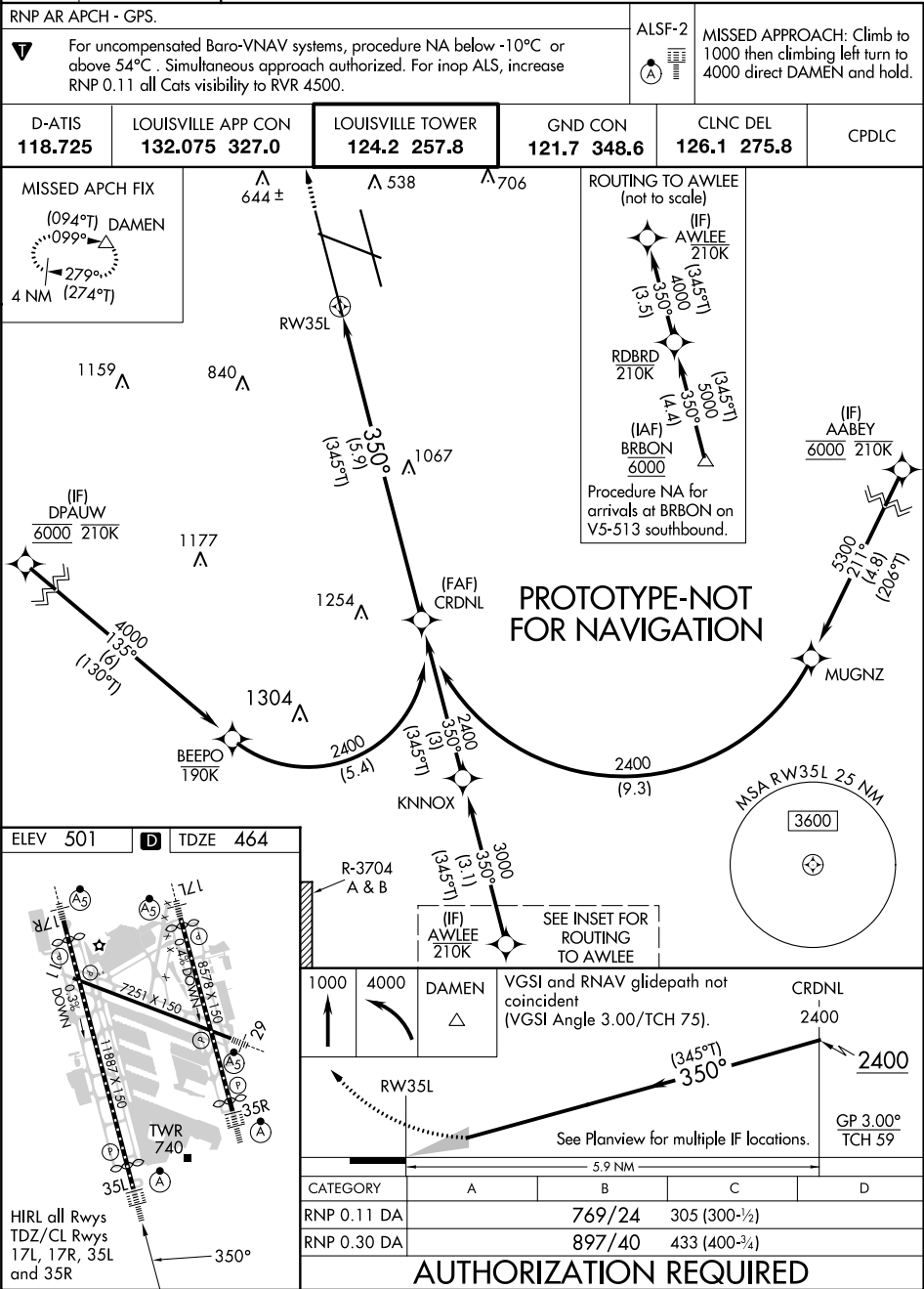
Currently, FAAO 8260.19I paragraph 8-6-10n (1) requires Flight Standards approval from the Flight Technologies and Procedures Division to chart a mandatory altitude on the intermediate segment of an instrument approach procedure.

Therefore, Louisville TRACON requests to chart mandatory restrictions at AABEY and DPAUW RNAV RNP Z RWY 35L. This is an ATC operational request to ensure vertical separation between aircraft on the approach and other TRACON traffic.

Sincerely,

APP CRS	Rwy Idg	10000
350°	TDZE	464
	Apt Elev	501

RNAV (RNP) Z RWY 35L
LOUISVILLE MUHAMMAD ALI INTL (SDF)

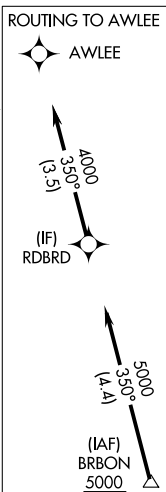


23334

RNAV (RNP) Z RWY 35L
LOUISVILLE MUHAMMAD ALI INTL (SDF)

MISSED APPROACH: Climb to 1000 then climbing left turn to 3000 direct DAMEN and hold.

CPDLC



ELEV 501

D	TDZE 464
---	----------

HIRL all RWys
TDZ/CL Rwy
17L, 17R, 35L
and 35R

350°

CRDNL

Side view diagram showing the RW35L antenna and the 350° antenna. The distance between the base of the RW35L antenna and the 350° antenna is 5.9 NM. A note indicates: "See Planview for multiple IF locations." The table entry for GP 3.00° and TCH 59 is shown.

CATEGORY	A	B	C	D
RNP 0.12 DA		874/45	410 (400-7%)	
RNP 0.30 DA		914/50	450 (500-1)	

AUTHORIZATION REQUIRED

LOUISVILLE MUHAMMAD ALI INTL (SDF)
RNAV (RNP) Z RWY 35L

KSDF
Louisville Muhammad Ali Intl
Louisville, KY
RNAV (RNP) Z Rwy 35L, Amdt 2
1:500,000

Missed Holding
TOWER (1133)
18-002484

CTC LOUISVILLE APP WITHIN
20 NM ON 132.075

Missed Lvl Sfc
ANTENNA (1359)
21-028060

RNP 0.3 Final
RIG (580)
21-062665

Intermediate AABEY
TOWER (1012)
21-020059

Intermediate MUGNZ
Intermediate KNNOX
TOWER (1254)
21-000420

Intermediates
DPAUW-BEEPO-CRDNL
TOWER (1304)
21-000870

Intermediate AWLEE
AAO (1034)

Intermediate RDBRD
TOWER (1107)
21-001296

Initial
AAO (1165)

