

Flight Procedures Cover Page	Task Action: FLIGHT CHECK	Task Type: IAP	Estimated Chart Date: 07/11/2024	APWS Task ID: 81D3A3CFD6844E03B279E6C9F3AA68E4	APWS Project ID: CB608286F1A24EDAA494952352BD26CB
Procedure: RNAV (RNP) Z RWY 35L AMDT 2		Enroute: NO	Specialist: Dumar, Ralph		Agreement Number:
Airport ID: KSDF			Airport City: LOUISVILLE		State: KY
Facility ID:	Facility Type:	Flight Inspection Remark Type: New FC Slot			
<div>Procedure Comments: KSDF ACTIVE DATA USED. APPROVAL LETTER: MANDATORY ALTITUDES AT INTERMEDIATE FIXES AABEY AND DPAUW  REMARKS: PUBLISHED INTERMEDIATE SEGMENTS REPLACED. MINIMUMS LOWERED. CONTACT RAKE MCGRAW (405) 954-8711</div> <div>QUALITY 20 CHECKED  QUALITY 15 CHECKED</div>					



# Federal Aviation Administration

---

---

## Memorandum

Date: November 14, 2023  
To: Tom Lattimer, FAA CSA OSG PBN Co-Lead  
From: Jeffrey Chester, TCID Airspace and Procedures Manager  
Prepared by: Scott Enander, Senior ATC Specialist, NAVTAC Support  
Subject: Letter of Approval Request KSDF RNAV (RNP) Z RWY 35L

---

---

KSDF RNAV RNP Z RWY 35L: AABEY and DPAUW Mandatory Altitude.

KSDF TRACON requests AFS approval to chart mandatory altitude restrictions at the following fixes; AABEY and DPAUW at 6000ft MSL for RNAV RNP Z RWY 35L instrument approach procedure for Louisville Muhammad Ali International Airport (KSDF).

Currently, FAAO 8260.19I paragraph 8-6-10n (1) requires Flight Standards approval from the Flight Technologies and Procedures Division to chart a mandatory altitude on the intermediate segment of an instrument approach procedure.

Therefore, Louisville TRACON requests to chart mandatory restrictions at AABEY and DPAUW RNAV RNP Z RWY 35L. This is an ATC operational request to ensure vertical separation between aircraft on the approach and other TRACON traffic.

Sincerely,

FIG

RNAV (RNP) Z RWY 35L  
LOUISVILLE MUHAMMAD ALI INTL (SDF)

**MISSED APPROACH:** Climb to 1000 then climbing left turn to 4000 direct DAMEN and hold.

CPDLC

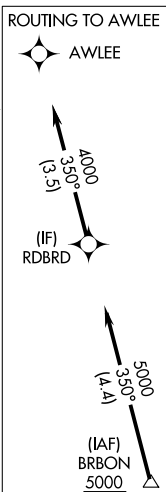
LOUISVILLE MUHAMMAD ALI INTL (SDF)  
RNAV (RNP) Z RWY 35L

23334

RNAV (RNP) Z RWY 35L  
LOUISVILLE MUHAMMAD ALI INTL (SDF)

**MISSED APPROACH:** Climb to 1000 then climbing left turn to 3000 direct DAMEN and hold.

CPDLC



2400  
P 3.00°  
CH 59

CATEGORY	A	B	C	D
RNP 0.12 DA		874/45	410 (400-7%)	
RNP 0.30 DA		914/50	450 (500-1)	

**AUTHORIZATION REQUIRED**

LOUISVILLE MUHAMMAD ALI INTL (SDF)  
RNAV (RNP) Z RWY 35L



**KSDF**  
Louisville Muhammad Ali Intl  
Louisville, KY  
RNAV (RNP) Z Rwy 35L, Amdt 2  
1:500,000

Missed Holding  
TOWER (1133)  
18-002484

CTC LOUISVILLE APP WITHIN  
20 NM ON 132.075

Missed Lvl Sfc  
ANTENNA (1359)  
21-028060

RNP 0.3 Final  
RIG (580)  
21-062665

Intermediate AABEY  
TOWER (1012)  
21-020059

Intermediate MUGNZ  
Intermediate KNNOX  
TOWER (1254)  
21-000420

Intermediates  
DPAUW-BEEPO-CRDNL  
TOWER (1304)  
21-000870

Intermediate AWLEE  
AAO (1034)

Intermediate RDBRD  
TOWER (1107)  
21-001296

Initial  
AAO (1165)

