



Flight Procedures Cover Page	Task Action: P-NOTAM	Task Type: IAP	Estimated Chart Date: 07/15/2021	APWS Task ID: 8165F565453F40DC9CEC8F9FAC080DC4	APWS Project ID: 1BA7A46D0EB340DAA3B9DDF1A64C7D8C
Procedure: RNAV (GPS) RWY 1L AMDT 0D		Enroute: NO	Specialist: Miller, Ralph		Agreement Number:
Airport ID: KIAD			Airport City: WASHINGTON		State: DC
Facility ID:	Facility Type:	Flight Inspection Remark Type:			
<p>Procedure Comments: P-NOTAM.</p> <p>ORDER 8260.3, CHAPTER 2, NEW CIRCLING CRITERIA APPLIED</p> <p>ACTIVE DATA USED.</p> <p>CONTACT JASON KRETSCHMER, AJV-A421, 405-954-5077.</p> <div style="text-align: center; margin-top: 100px;"> <i>Digitally signed by</i> JASON KRETSCHMER Apr 25, 2021 </div> <div style="text-align: right; margin-top: 100px;">   </div>					

WASHINGTON, DC

AL-5100 (FAA)

20310

WAAS CH 99309 W01D	APP CRS 011°	Rwy Idg TDZE Apt Elev	9400 296 312
--	------------------------	-----------------------------	---

OLD

RNAV (GPS) RWY 1L

WASHINGTON DULLES INTL (IAD)

For uncompensated Baro-VNAV systems, LNAV/VNAV NA below -15°C (5°F) or above 48°C (118°F). DME/DME RNP-0.3 NA. Simultaneous approach authorized with ILS or LOC Rwy 1R, ILS Rwy 1R (Cat II), ILS Rwy 1R (Cat III). LNAV procedure NA during simultaneous operations. Use of FD or AP providing RNAV track guidance required during simultaneous operations.

ALSF-2



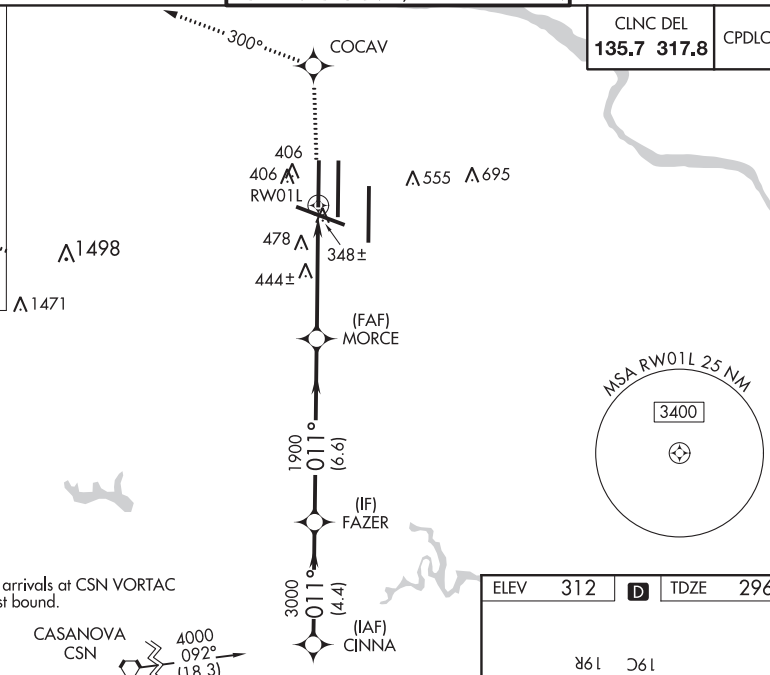
MISSED APPROACH: Climb to 4000 direct COCAV and on 300° track to PRISM and on 346° track to MRB VORTAC and hold.

D-ATIS 134.85	POTOMAC APP CON 120.45 306.925 (241°-330°) 128.525 306.925 (091°-240°) 126.1 338.25 (331°-090°)
-------------------------	---

DULLES TOWER 120.1 317.8 (Rwy 1R/19L) 120.25 348.6 (Rwy 1C/19C) 134.425 348.6 (Rwys 1L/19R and 12/30)

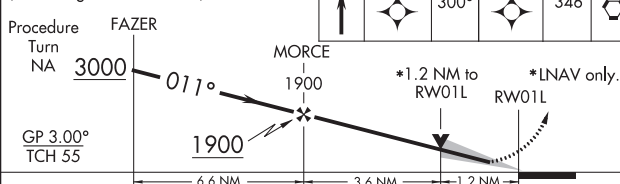
GND CON 121.9 317.8 (EAST) 121.625 348.6 (WEST)

MISSED APCH FIX
MARTINSBURG
MRB

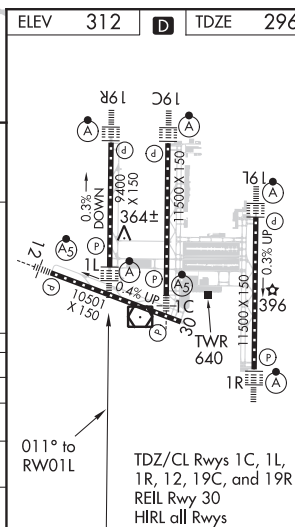


CLNC DEL 135.7 317.8	CPDLC
--------------------------------	-------

VGSI and RNAV glidepath not coincident (VGSI Angle 3.00/TCH 72).



CATEGORY	A	B	C	D
LPV DA	496/18	200 (200-1/2)		
LNAV/VNAV DA	828/60	532 (600-1 1/4)		
LNAV MDA	740/24 444 (500-1/2)	740/40 444 (500-1)	740/50 444 (500-1)	
CIRCLING	940-1 628 (700-1)	940-1 3/4 628 (700-1 1/4)	940-2 628 (700-2)	



WASHINGTON, DC
Orig-C 17AUG17

38°57'N-77°28'W

WASHINGTON DULLES INTL (IAD)
RNAV (GPS) RWY 1L

NE-3, 05 NOV 2020 to 03 DEC 2020

NE-3, 05 NOV 2020 to 03 DEC 2020

KIAD
 NEW CIRCLING RADII APPLIED
 CAT D MINS RAISED TO 1060
 OBST 51-022893 695 MSL +300 FT
 ROC + 50 FT ACCURACY CODE =
 1045 ROUNDED TO 1060.
 NEW RADIIS:
 A: 1.30, B: 1.82, C: 2.85, D: 3.73 NM

