

Flight Procedures Cover Page	Task Action: P-NOTAM	Task Type: IAP	Estimated Chart Date: 03/25/2021	APWS Task ID: CA79F59B3984451599CD660E970CDCCA	APWS Project ID: 9C50E012E389401E8362B4399529C5E4
Procedure: VOR/DME-A AMDT 4A		Enroute: NO	Specialist: Lafferty, James		Agreement Number:
Airport ID: KHAE			Airport City: HANNIBAL		State: MO
Facility ID:	Facility Type:	Flight Inspection Remark Type:			
<div> <div>Procedure Comments:</div> <div> <p>P-NOTAM</p> <p>This Cancels FDC 0/7492</p> <p>Order 8260.3, chapter 2, New Circling Criteria Applied</p> <p>Contact Dave Teffeteller at 202-267-5177</p> </div> <div> <div>QUALITY</div> <div>23</div> <div>CHECKED</div> </div> </div>					

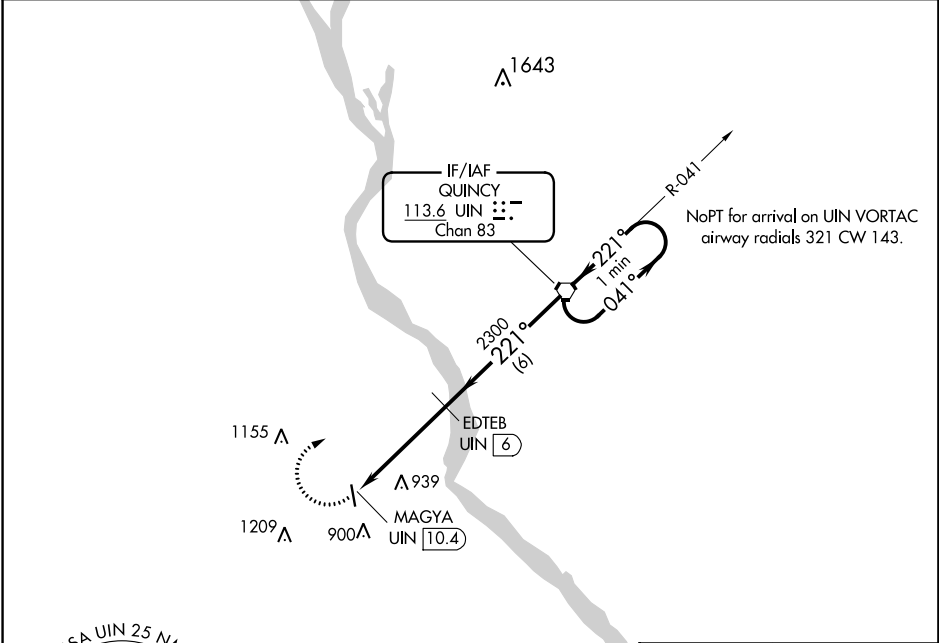
VORTAC UIN <b>113.6</b> Chan <b>83</b>	APP CRS <b>221°</b>	Rwy Idg TDZE Apt Elev	<b>N/A</b> <b>N/A</b> <b>769</b>
--	------------------------	-----------------------------	--

OLD

VOR/DME-A  
HANNIBAL RGNL (HAE)

<b>NA</b> When local altimeter setting not received, use Quincy altimeter setting, increase all MDA 60 feet.	<b>MISSED APPROACH:</b> Climbing right turn to 2300 direct UIN VORTAC and hold.
---	---

<b>AWOS-3</b> <b>120.775</b>	<b>KANSAS CITY CENTER</b> <b>126.225 317.775</b>	<b>UNICOM</b> <b>122.8 (CTAF)</b>
---------------------------------	---	--------------------------------------



<div> <div>2300</div> <div>UIN</div> <div> </div> </div>	<div> <div>EDTEB</div> <div>UIN</div> <div>6</div> </div>	<div> <div>UIN VORTAC</div> <div>One Minute Holding Pattern</div> </div>		
<div> <div>MAGYA</div> <div>UIN</div> <div>10.4</div> </div>	<div> <div>2300</div> <div>221°</div> <div>041°</div> <div>2300</div> </div>	<div> <div>221°</div> <div>041°</div> <div>2300</div> </div>		
<div> <div>4.4 NM</div> <div>6 NM</div> </div>				
CATEGORY	A	B	C	D
CIRCLING	1300-1	531 (600-1)	1300-1½ 531 (600-1½)	NA

<div> <div>MIRL Rwy 17-35</div> <div>REIL Rws 17 and 35</div> </div>
--

KHAE  
HANNIBAL RGNL  
HANNIBAL  
MO  
NEW CIRCLING AREA  
1:100,000

Circling CAT B TOWER (939)  
29-000370

Circling CAT C SPIRE (1209)  
29-002747

Circling CAT A TANK (900)  
29-022510

Circling CAT B TOWER (S  
29-000370

Circling CAT C SPIRE (1209)  
29-002747

Circling CAT A TANK (900)  
29-022510