




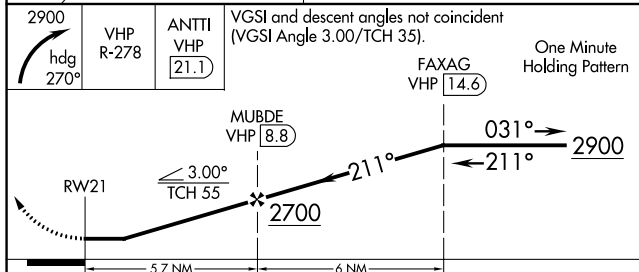
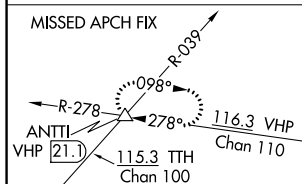
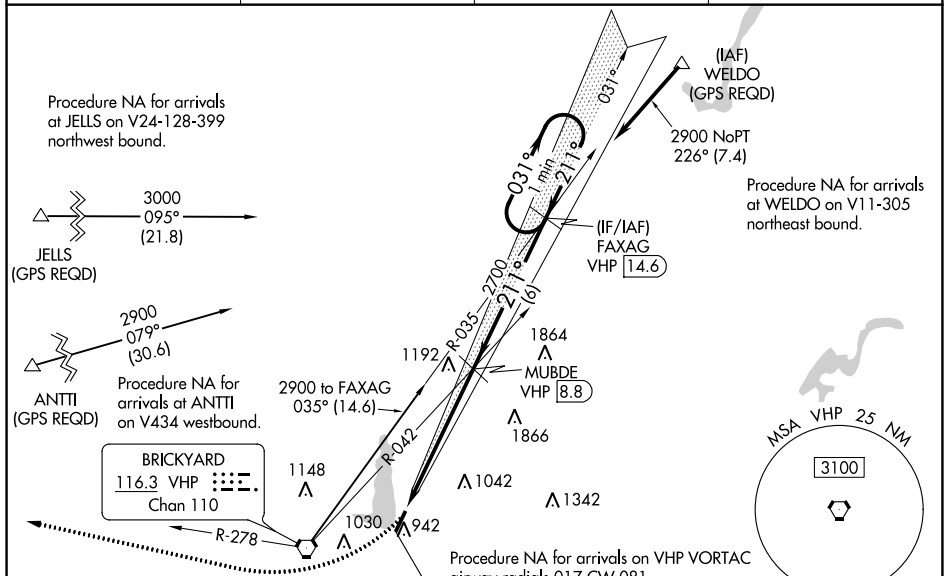
Flight Procedures Cover Page	Task Action: Abbreviated Amendment	Task Type: IAP	Estimated Chart Date: 05/16/2024	APWS Task ID: 8088A5D3C36841A99A7A0352EFEB5224	APWS Project ID: 3D6468E8CBFC4F7982CF7685B294D810
Procedure: LOC RWY 21 AMDT 4B		Enroute: NO	Specialist: Clark, Jacob		Agreement Number:
Airport ID: KEYE			Airport City: INDIANAPOLIS		State: IN
Facility ID: EYE	Facility Type: LOC	Flight Inspection Remark Type:			
<div>Procedure Comments:</div> <div>ACTIVE DATA USED FOR KEYE AIRPORT AND RUNWAYS.</div> <div>THIS AMENDMENT CLEARS T-NOTAM 3/5088 RAISING MINIMUMS TO 1 SM.</div> <div>REMOVED V305, AND V128 ASSOCIATED NOTES - OKK VOR MON.</div> <div>PROCESSED IAW TECHNICAL SUPPORT GROUP (ALF-17) MEMO DATED 07/07/2021 GUIDANCE FOR PROCEDURAL CHANGES REQUIRING FLIGHT INSPECTION/VALIDATION.</div> <div>CONTACT: ERIC SUSKI 405-954-7331</div> <div><div>Digitally signed by</div><div>ERIC N SUSKI</div><div>Apr 03, 2024</div></div> <div><div>QUALITY 38 CHECKED</div><div>QUALITY 34 CHECKED</div></div>					


LOC I-EYE <u>111.5</u>	APP CRS 211°	Rwy Idg TDZE Apt Elev	4200 823 823
----------------------------------	------------------------	-----------------------------	---

LOC RWY 21
EAGLE CREEK AIRPARK (EYE)

  NA	Helicopter visibility reduction below $\frac{3}{4}$ SM NA. When local altimeter setting not received, use Indianapolis Int'l altimeter setting and increase all MDA 20 feet. DME required. For inoperative MALS, increase Cat C visibility to 1½ mile.	MALS 	MISSED APPROACH: Climbing right turn to 2900 on heading 270° and VHP R-278 to ANTTI INT/VHP 21.1 DME and hold.
---	--	---	--

ASOS 121.575	INDIANAPOLIS APP CON 119.05 317.8	CLNC DEL 128.6	UNICOM 122.8 (CTAF) 0
------------------------	---	--------------------------	---------------------------------



CATEGORY	A	B	C	D
S-21	1340- ³ / ₄	517 (600- ³ / ₄)	1340-1 ¹ / ₄ 517 (600-1 ¹ / ₄)	NA
 CIRCLING	1340-1	517 (600-1)	1500-2 677 (700-2)	NA

