

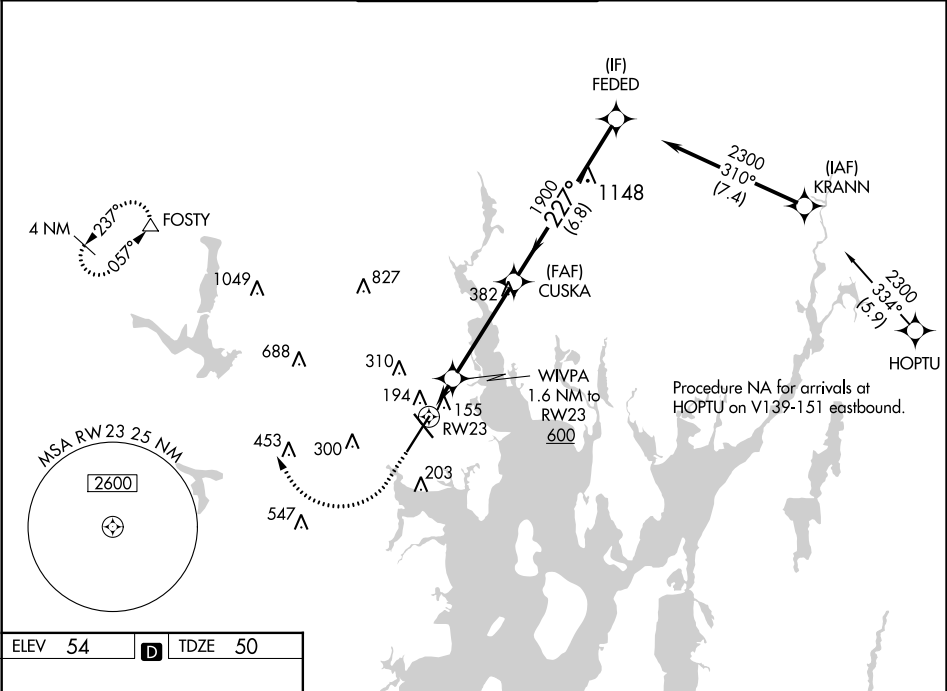
Flight Procedures Cover Page	Task Action: FLIGHT CHECK	Task Type: IAP	Estimated Chart Date: 12/26/2024	APWS Task ID: 7FB3799568EB42BFB3695838F30C4CEE	APWS Project ID: FBC9A2D2F2DD4394AB4AB5C775BA1A06
Procedure: RNAV (GPS) Y RWY 23 AMDT 2C		Enroute: NO	Specialist: Mendenhall, Christopher		Agreement Number:
Airport ID: KPVD			Airport City: PROVIDENCE		State: RI
Facility ID:	Facility Type:	Flight Inspection Remark Type: New FC Slot			
<div>Procedure Comments:</div> <div>ACTIVE DATA USED FOR KPVD</div> <div>CANCEL FDC NOTAM 4/9954.</div> <div>CRC REMAINDER "25AB5BA7"</div> <div>CONTACT: DAVID DANNER 405-954-5077</div> <div><div>QUALITY 41 CHECKED</div><div>QUALITY 30 CHECKED</div></div>					

<b>FIPC BASIC FORM</b>							
<b>PROCEDURE:</b> RNAV (GPS) Y RWY 23 AMDT 2C			<b>AIRPORT NAME:</b> RHODE ISLAND TF GREEN INTL		<b>AIRPORT ID:</b> KPVD	<b>SPECIAL CONTROL NO:</b> YG-09-224-24	
<b>FAC ID:</b> KPVD23.02Y		<b>CITY:</b> PROVIDENCE			<b>ST:</b> RI	<b>ORIG CHART DATE:</b> 12/26/2024	
<b>DFL TYPE:</b> PROC/S	<b>THIRD PARTY:</b> <input type="checkbox"/> YES	<b>EST. TIME ON SITE:</b> 0.4	<b>REIMB. NUMBER:</b>		<b>PTS TASK ID:</b> 7FB3799568EB42BFB3695838F30C4CEE		
<b>PREFLIGHT NOTES</b>							
<b>REVIEWER:</b>					<b>DATE:</b>		
<b>COMMENTS:</b>					<b>CHECK ONE:</b>		
					<input type="checkbox"/> FLT CK REQ <input type="checkbox"/> NFCR <input type="checkbox"/> REJECT		
							<b>YES</b>
					<b>CPV COMPLETE?</b>		<b>X</b>
<b>PROCEDURE RESULTS</b>							
<b>INSPECTION DATE:</b> 11/05/2024		<b>CREW #:</b> VN085	<b>N #:</b> N92	<b>INSTRUMENT PROCEDURE STATUS:</b> <input checked="" type="checkbox"/> SAT <input type="checkbox"/> SAT W/CHANGES <input type="checkbox"/> UNSAT		<b>ARINC CODING:</b> <input checked="" type="checkbox"/> SAT <input type="checkbox"/> SAT/GOLD <input type="checkbox"/> UNSAT	
<b>FLIGHT INSPECTOR SIGNATURE:</b> kenneth e jack @ 11/05/2024 22:12			<b>PRINTED NAME:</b> JACK, KENNETH EARL				<b>NOTAM INITIATED?</b> <input type="checkbox"/> YES <input checked="" type="checkbox"/> NO
<b>FLIGHT INSPECTOR REMARKS:</b> Special Number YG-09-224-24: RHODE ISLAND TF GREEN INTL, PROVIDENCE, RHODE ISLAND, RNAV (GPS) RWY 23, AMDT 2C. Completed Sat.							
<b>IN-FLIGHT OBSTACLE REPORT</b>							
<b>OBSTRUCTION ID #:</b>	<b>COORDINATES OR LOCATION:</b>		<b>GNSS ALTITUDE (MSL):</b>		<b>BAROMETRIC ALTITUDE (MSL):</b>		<b>HEIGHT ABOVE GROUND LEVEL:</b>

WAAS CH <b>93823</b> <b>W23A</b>	APP CRS <b>227°</b>	Rwy Idg TDZE Apt Elev	<b>8700</b> <b>50</b> <b>54</b>
--	------------------------	-----------------------------	---------------------------------------

RNAV (GPS) Y RWY 23  
RHODE ISLAND TF GREEN INTL (PVD)

RNP APCH - GPS.		MALSR	MISSED APPROACH: Climb to 1700 then climbing right turn to 2500 direct FOSTY and hold.	
▼ For uncompensated Baro-VNAV systems, procedure NA below -16°C or above 54°C. For inop ALS, increase LNAV Cats C/D visibility to RVR 6000. ** RVR 1800 authorized with use of FD or AP or HUD to DA.				
D-ATIS <b>124.2</b>	PROVIDENCE APP CON * <b>123.675 244.875</b>	PROVIDENCE TOWER * <b>120.7 (CTAF) 257.8</b>	GND CON <b>121.9 348.6</b>	CLNC DEL <b>126.65 348.6</b>



ELEV 54	D	TDZE 50	1700 2500 FOSTY VGSI and RNAV glidepath not coincident (VGSI Angle 3.00/TCH 41).			
			RWY 23 WIVPA 1.6 NM to RWY 23 CUSKA 1900 FEDED 2300 GP 3.00° TCH 51			
			1.6 NM 4.1 NM 6.8 NM			
CATEGORY			A	B	C	D
LPV DA **			250/24		200 (200-½)	
LNAV/VNAV DA			355/35		305 (400-⅔)	
LNAV MDA			460/24		410 (500-½)	460/40 410 (500-¾)
CIRCLING			560-1 506 (600-1)	640-1 586 (600-1)	640-1½ 586 (600-1½)	860-2½ 806 (900-2½)

WAAS  
CH **93823**  
**W23A**

APP CRS  
**227°**

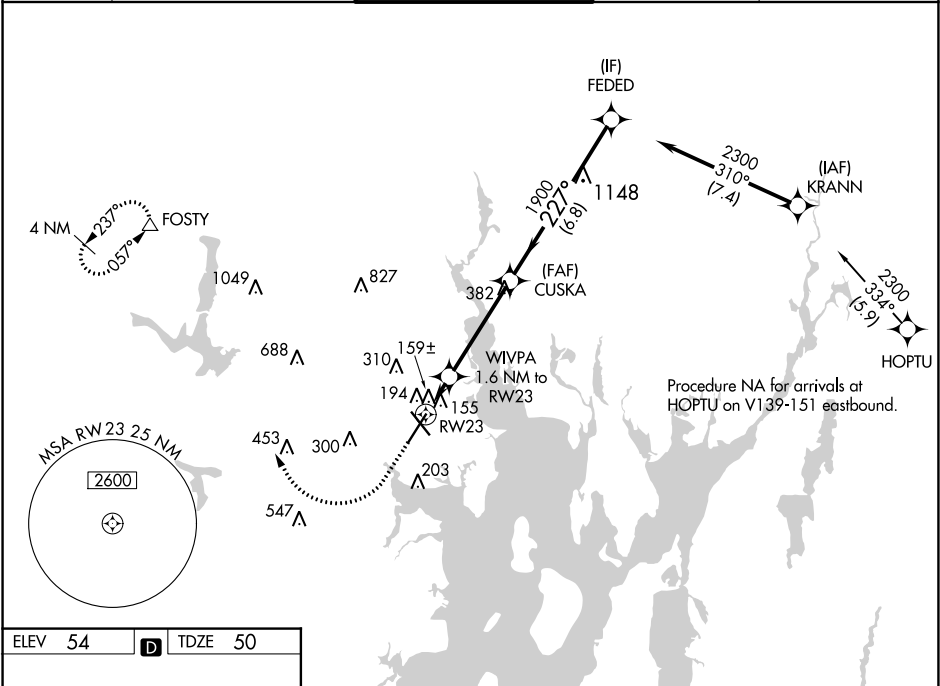
Rwy Idg  
TDZE  
Apt Elev  
**8700**  
**50**  
**54**

OLD

RNAV (GPS) Y RWY 23

RHODE ISLAND TF GREEN INTL (PVD)

RNP APCH. ▼ For uncompensated Baro-VNAV systems, procedure NA below -17°C or above 54°C. For inop ALS, increase LNAV Cats C/D visibility to RVR 6000. ** RVR 1800 authorized with use of FD or AP or HUD to DA.			MALSR AS	MISSED APPROACH: Climb to 1700 then climbing right turn to 2500 direct FOSTY and hold.	
D-ATIS <b>124.2</b>	PROVIDENCE APP CON * <b>123.675 244.875</b>	PROVIDENCE TOWER * <b>120.7 (CTAF) 0 257.8</b>	GND CON <b>121.9 348.6</b>	CLNC DEL <b>126.65 348.6</b>	



ELEV 54

D

TDZE 50

227°

91

0.661 X 150

0.38 UP

AS

TWR 134

8700 X 150

TDZ/CL Rwy 5

REIL Rwy 16

HIRL Rwy 5-23 and 16-34

1700

2500

FOSTY

△

VGSI and RNAV glidepath not coincident (VGSI Angle 3.00/TCH 41).

\*LNAV only

WVPA 1.6 NM to RW23

\*1 NM to RW23

RW23

1

0.6 NM

4.1 NM

6.8 NM

FEDED

2300

227°

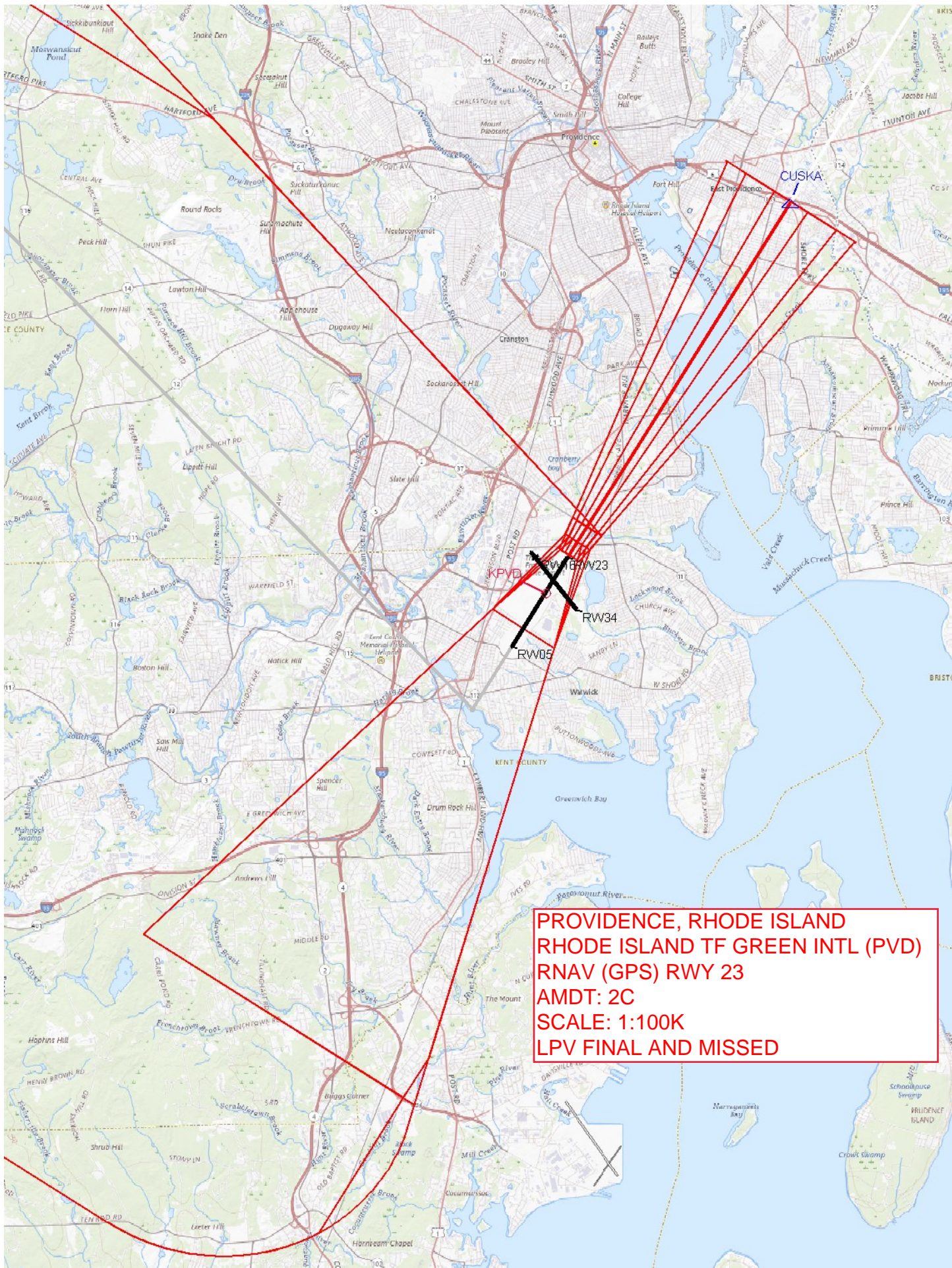
1900

CUSKA

GP 3.00° TCH 51

CATEGORY	A	B	C	D
LPV DA **	250/24		200 (200-½)	
LNAV/VNAV DA	346/24		296 (300-½)	
LNAV MDA	460/24	410 (500-½)	460/40	410 (500-¾)
CIRCLING	560-1 506 (600-1)	640-1 586 (600-1)	640-1½ 586 (600-1½)	860-2½ 806 (900-2½)





PROVIDENCE, RHODE ISLAND  
RHODE ISLAND TF GREEN INTL (PVD)  
RNAV (GPS) RWY 23  
AMDT: 2C  
SCALE: 1:100K  
LPV FINAL AND MISSED



