

Flight Procedures Cover Page	Task Action: P-NOTAM	Task Type: IAP	Estimated Chart Date: 05/20/2021	APWS Task ID: 7F2E10982D20484AB42CD315B439C9FF	APWS Project ID: 0DD4ABA8D29F4C7B9444C044BC128778
Procedure: RNAV (GPS) RWY 17 AMDT 1A		Enroute: NO	Specialist: Lafferty, James		Agreement Number:
Airport ID: KDCM			Airport City: CHESTER		State: SC
Facility ID:	Facility Type:	Flight Inspection Remark Type:			
<p>Procedure Comments:</p> <p>P-NOTAM</p> <p>This Cancels FDC 0/7322</p> <p>Order 8260.3, chapter 2, New Circling Criteria Applied</p> <p>Contact Dave Teffeteller at 202-267-5177</p>					

QUALITY
45
CHECKED

QUALITY
26
CHECKED

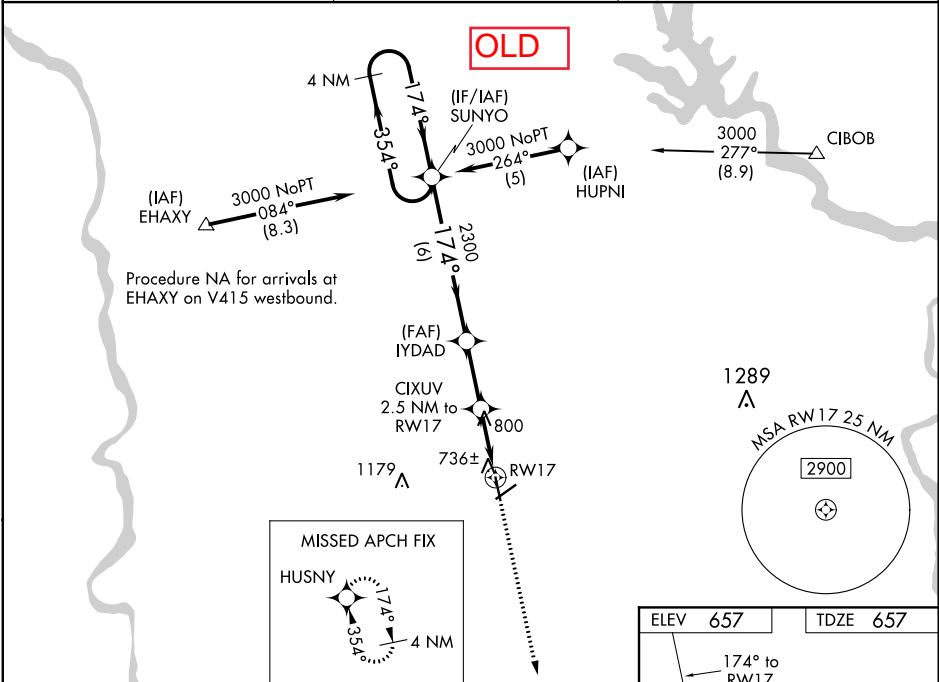
WAAS CH 93818 W17A	APP CRS 174°	Rwy Idg TDZE Apt Elev	5000 657 657
--	------------------------	-----------------------------	---

RNAV (GPS) RWY 17
CHESTER CATAWBA RGNL (DCM)

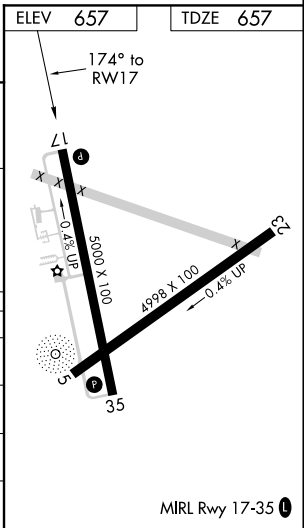
⚠ Circling to Rwy 5-23 NA at night. For uncompensated Baro-VNAV systems, LNAV/VNAV NA below -16°C (4°F) or above 47°C (116°F). DME/DME RNP-0.3 NA. Visibility reduction by helicopters NA. When local altimeter setting not received, use Rock Hill altimeter setting and increase all DA 33 feet and all MDA 40 feet and LNAV Cat D visibility ¼ mile. Baro-VNAV and VDP NA when using Rock Hill altimeter setting.

MISSED APPROACH:
Climb to 3000 direct HUSNY and hold.

AWOS-3 120.975	CHARLOTTE APP CON 120.05 307.8	UNICOM 122.7 (CTAF) 0
--------------------------	--	---------------------------------



4 NM Holding Pattern		SUNYO		IYDAD		CIXUV 2.5 NM to RW17		3000 ↑ HUSNY ✱	
3000 174°→ ←354°		174°		2300		*1.1 NM to RW17		*LNAV only.	
GP 3.00° TCH 34		2300		*1480		RW17			
		6 NM		2.5 NM		1.4 NM		1.1	
CATEGORY	A	B	C	D					
LPV DA	907-1 250 (300-1)								
LNAV/ VNAV DA	1134-1¾ 477 (500-1¾)								
LNAV MDA	1060-1	403 (500-1)	1060-1¼		403 (500-1¼)				
CIRCLING	1160-1	503 (600-1)	1160-1½		503 (600-1½)		1220-2		563 (600-2)



SE-2, 18 JUN 2020 to 16 JUL 2020

SE-2, 18 JUN 2020 to 16 JUL 2020

