

Flight Procedures Cover Page	Task Action: FLIGHT CHECK	Task Type: IAP	Estimated Chart Date: 07/11/2024	APWS Task ID: 7F216DCD632A42E4B38C82BAD54C1B8E	APWS Project ID: 0EF6C1A42E1645828E94B3611180C4BD
Procedure: ILS Z RWY 12 AMDT 1		Enroute: NO	Specialist: Cyrus, Theron		Agreement Number:
Airport ID: KEAT			Airport City: WENATCHEE		State: WA
Facility ID: ADJ	Facility Type: ILS	Flight Inspection Remark Type: New FC Slot			
<div>Procedure Comments: ACTIVE DATA USED FOR KLHQ AND RWYS AND I-ADJ. WAIVER (S): (1): 8260.19I, Para 2-11-5: REQUEST TO NOT APPLY AAO WITHIN THE MISSED APPROACH AREA. ESV (S): (2): I-ADJ FOR FIX: EWJOR AND BRELD. CONTACT CASIMIR TABAKA 405 202 7857.</div> <div><div>QUALITY 20 CHECKED</div><div>QUALITY 38 CHECKED</div></div>					

FIPC BASIC FORM						
PROCEDURE: ILS Z RWY 12 AMDT 1			AIRPORT NAME: PANGBORN MEML		AIRPORT ID: KEAT	SPECIAL CONTROL NO: SP-03-259-24
FAC ID: ADJ		CITY: WENATCHEE			ST: WA	ORIG CHART DATE: 07/11/2024
DFL TYPE: PROC/AR	THIRD PARTY: <input type="checkbox"/> YES	EST. TIME ON SITE: 0.5	REIMB. NUMBER:	PTS TASK ID: 7F216DCD632A42E4B38C82BAD54C1B8E		
PREFLIGHT NOTES						
REVIEWER: gary j veer					DATE: 04/19/2024	
COMMENTS:					CHECK ONE:	
					<input type="checkbox"/> FLT CK REQ <input type="checkbox"/> NFCR <input checked="" type="checkbox"/> REJECT	
						YES
					CPV COMPLETE?	
					X	
PROCEDURE RESULTS						
INSPECTION DATE: 04/19/2024	CREW #: VN362	N #:	INSTRUMENT PROCEDURE STATUS:		ARINC CODING:	
			<input type="checkbox"/> SAT <input type="checkbox"/> SAT W/CHANGES <input checked="" type="checkbox"/> UNSAT		<input type="checkbox"/> SAT <input type="checkbox"/> SAT/GOLD <input checked="" type="checkbox"/> UNSAT	
FLIGHT INSPECTOR SIGNATURE:			PRINTED NAME:			NOTAM INITIATED?
gary j veer @ 04/19/2024 18:02			VEER, GARY JOHN			<input type="checkbox"/> YES <input checked="" type="checkbox"/> NO
FLIGHT INSPECTOR REMARKS: PANGBORN MEML, WENATCHEE, WA, ILS Z RWY 12, AMDT 1, UNSAT. Reconfiguration of ILS Z RWY 12 has new arc at EAT 24 DME, joining the LOC at BRELD INT I-ADJ 24.9 DME. ESVs included in package for LOC, DME, and GS. The GS ESV is in question using the same MIN/MAX altitudes as the LOC and DME, 86/90. The GS for this procedure uses a 3.60 angle. GS ESV should be updated to reflect proper altitudes for a 3.60 angle. My rough calculations show min altitude should be around 11,327' MSL at 25 miles with earth's curve considered. With the DME arc at 8700 before joining final it is questionable whether a 25 mile GS ESV is necessary. The existing GS ESV is at 15 NM at 66/66. Suggest moving GS ESV request in to 16 miles at 6800.						
IN-FLIGHT OBSTACLE REPORT						
OBSTRUCTION ID #:	COORDINATES OR LOCATION:	GNSS ALTITUDE (MSL):	BAROMETRIC ALTITUDE (MSL):	HEIGHT ABOVE GROUND LEVEL:		

ESV Details

Originating Office :CNI		Airspace Docket Number :		Request Type :Establish		
Facility Data						
Chart Name:EWJOR		City:WENATCHEE		Ident:ADJ		State:WA
Type/Class: GS		Frequency: M331.85		Reference Number: 24016141		
Extended Service Volume Data: (Requesting Officer)						
ESV ID	Radial 1	Radial 2	Distance	Minimum Altitude	Maximum Altitude	
FAA 050212 - 004	300		16	68	68	
Requirement: NEW PFAF FOR ILS Z RWY 12						
Signature:Cyrus Theron		Routing Symbol:AJV-A432				Date:01/18/2024
Extended Service Volume Data: (FMO)						
ESV ID	Radial 1	Radial 2	Distance	Minimum Altitude	Maximum Altitude	Action Type
FAA 050212 - 004	300		16	68	68	APPROVE
Requirement/Remarks: NEW PFAF FOR ILS Z RWY 12APPROVED. FREQ. PROTECTION & FIELD STRENGTH. PENDING FLIGHT INSPECT @ REQUIRED. DIST. & MIN ALT..						
Signature:Hughes Dennis		Routing Symbol:			Date:01/29/2024	
Extended Service Volume Data: (Super FMO)						
ESV ID	Radial 1	Radial 2	Distance	Minimum Altitude	Maximum Altitude	Action Type
FAA 050212 - 004	300		16	68	68	APPROVE
Requirement/Remarks: NEW PFAF FOR ILS Z RWY 12APPROVED. FREQ. PROTECTION & FIELD STRENGTH. PENDING FLIGHT INSPECT @ REQUIRED. DIST. & MIN ALT..						
Signature:Hughes Dennis		Routing Symbol:			Date:01/29/2024	
Extended Service Volume Data: (FIFO)						
ESV ID	Radial 1	Radial 2	Distance	Minimum Altitude	Maximum Altitude	Action Type
FAA 050212 - 004	300					
Requirement/Remarks:						
Signature:		Routing Symbol:			Date:	

WENATCHEE, WASHINGTON

AL-641 (FAA)

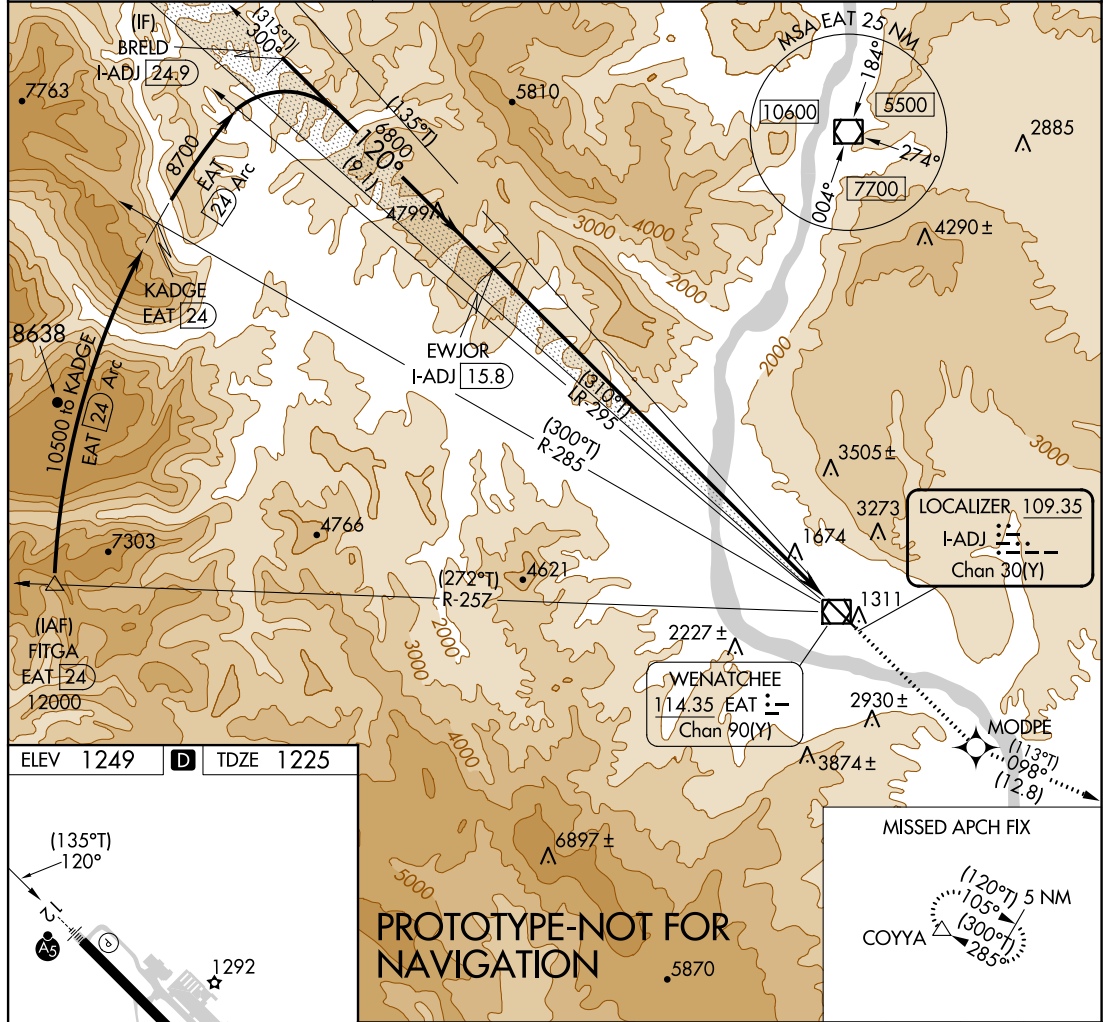
FIG

LOC/DME I-ADJ 109.35 Chan 30(Y)	APP CRS 120°	Rwy Idg TDZE Apt Elev 7000 1225 1249
---	------------------------	--

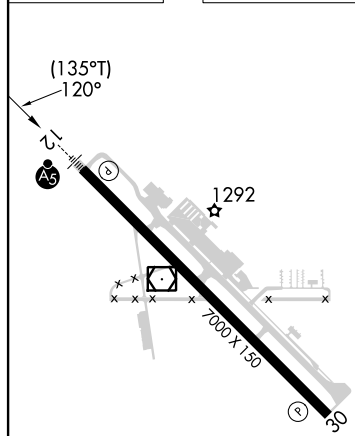
ILS Z RWY 12 PANGBORN MEML (EAT)

RNP APCH - GPS. DME required. For inop ALS, increase all visibility to 1 SM. -7°C	MALSR 	MISSED APPROACH: Climb to 5000 direct MODPE and on track 098° to COYYA and hold. *Missed approach requires minimum climb of 280 feet per NM to 2800; if unable to meet climb gradient, see ILS Y RWY 12.
--	-----------	---

ASOS 119.925	SEATTLE CENTER 126.1	UNICOM 123.0 (CTAF) 0
------------------------	--------------------------------	---------------------------------



ELEV 1249	D	TDZE 1225
-----------	----------	-----------



REIL Rwy 30 **0**
HIRL Rwy 12-30 **0**

BRELD I-ADJ 24.9	EWJOR I-ADJ 15.8	5000	MODPE	COYYA
8700	6800			
GS 3.60° TCH 58	6800	Use I-ADJ DME when on the localizer course.		
9.1 NM		14.5 NM		
CATEGORY	A	B	C	D
S-ILS 12*	1555-1/2 330 (400-1/2)			NA

AUTOMATED AL-641 ILS Z RWY 12
AUTOMATED AL-641 ILS Z RWY 12

NW-1
3-22-24
COMPILER: HD
R-EVIEWER:
DBL CHKR:
EFF: FIG

WENATCHEE, WASHINGTON

PANGBORN MEML (EAT)

Amdt 1 FIG

47°24'N-120°12'W





ILS Z RWY 12

WENATCHEE, WASHINGTON

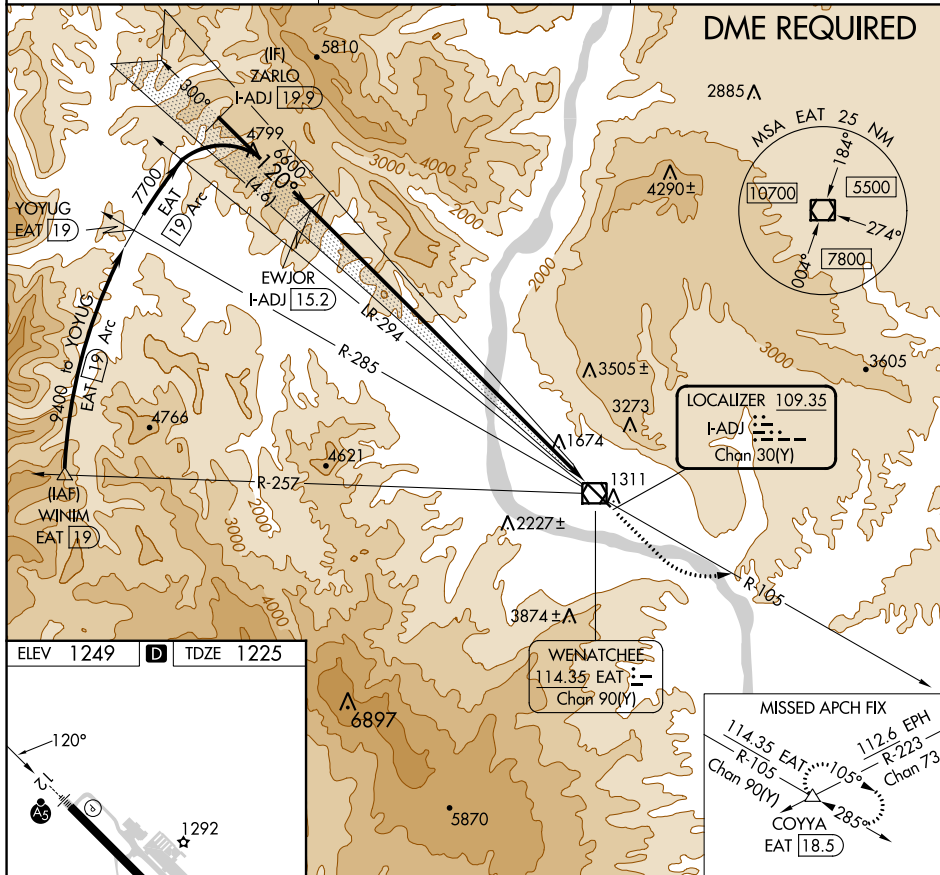
LOC/DME I-ADJ 109.35 Chan 30(Y)	APP CRS 120°	Rwy Idg 7000 TDZE 1225 Apt Elev 1249
---	------------------------	---

-OLD-

ILS Z RWY 12
PANGBORN MEML (EAT)

  	<p>DME required.</p> <p>-7°C</p>	<p>MALSR</p> 	<p>MISSED APPROACH: Climb to 1820 then climb to 5500 on EAT VOR/DME R-105 to COYYA INT/EAT 18.5 DME and hold.</p> <p>*Missed approach requires minimum climb of 420' per NM to 3200; if unable to meet climb gradient, see ILS Y RWY 12.</p>
---	----------------------------------	--	--

ASOS 119,925	SEATTLE CENTER 126.1	UNICOM 123.0 (CTAF) 0
------------------------	--------------------------------	--



NW-1, 22 FEB 2024 to 21 MAR 2024

1. FLIGHT PROCEDURE IDENTIFICATION:

Wenatchee, WA, Pangborn Meml (EAT), ILS Z RWY 12

2. WAIVER REQUIRED AND APPLICABLE STANDARD:

8260.19I, Para 2-11-5: "...an Adverse Assumption Obstacle (AAO) of 200 feet AGL is assumed to exist at and beyond a specified distance (radius) from the nearest landing surface at a given airport/helipad..."

3. REASON FOR WAIVER (JUSTIFICATION FOR NONSTANDARD TREATMENT):

Application of a 200 ft AAO in the missed approach area results in excessive climb gradients or DA adjustments to the procedure. The high terrain areas that are the controlling obstacle(s) for the missed approach are undeveloped with no structures or vegetation.

4. EQUIVALENT LEVEL OF SAFETY PROVIDED:

Both counties responsible for the areas in question have provided AAO letters stating that no development is planned for the areas and they will ensure the FAA is notified via the 7460 process if there are any proposals for any development projects in the future. The missed approach has been redesign as an RNAV missed. This design provides a smaller evaluation area than the conventional solution using EAT VOR/DME to COYYA.

5. ALTERNATIVE ACTIONS DEEMED NOT FEASIBLE:

Missed approach follows a river valley and cannot be rerouted without significant climb gradient and/or DA impacts.

6. COORDINATION WITH USER ORGANIZATIONS (SPECIFY):

7. SUBMITTED BY:

DATE	OFFICE IDENTIFICATION	TITLE
3/25/2024	AJV-A432	MGR

Digitally signed by
CASIMIR L TABAKA
Mar 25, 2024

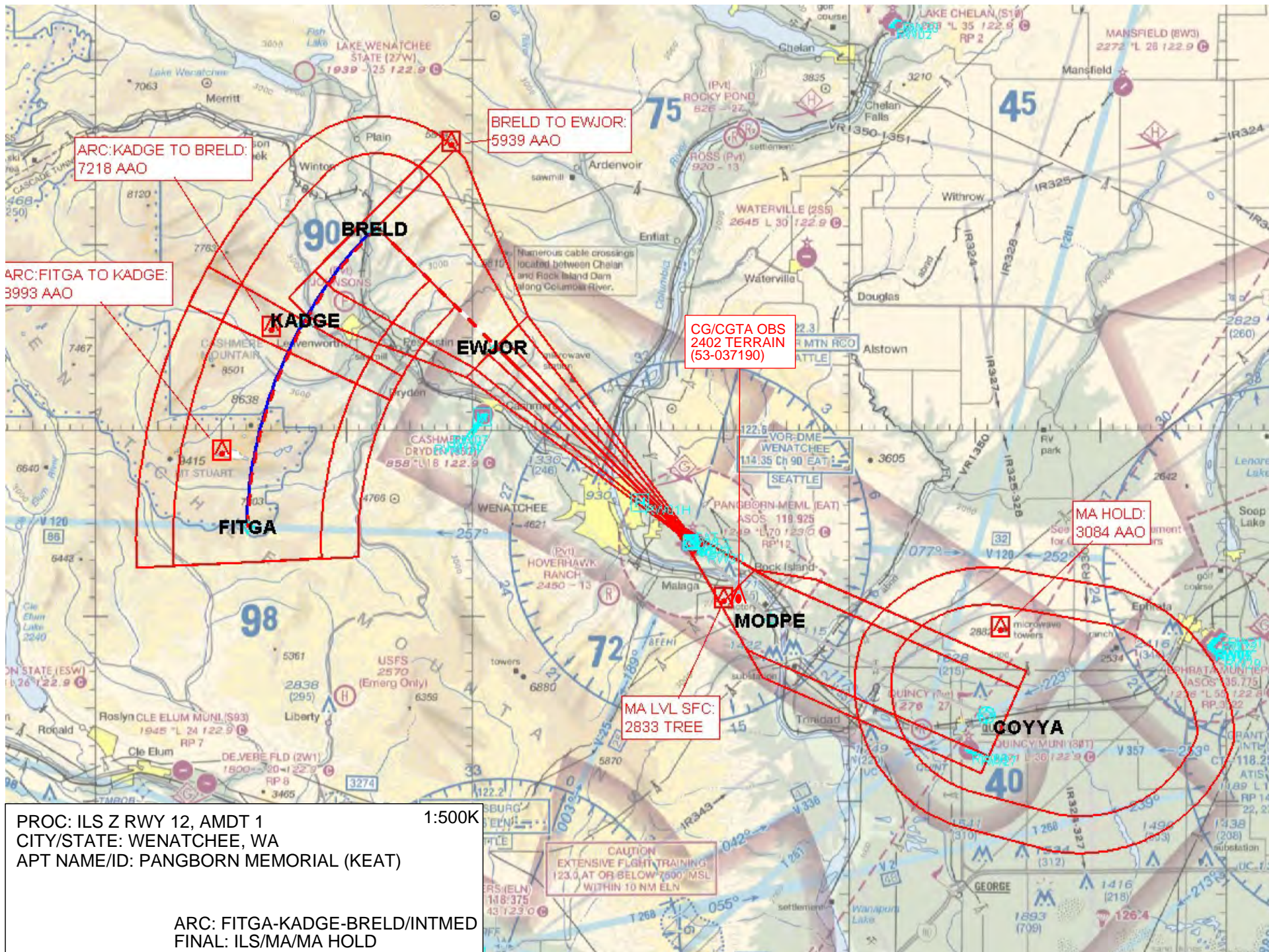
SIGNATURE
CASIMIR TABAKA

8. AFS ACTIONS:

☐ APPROVED ☐ DISAPPROVED ☐ NOT REQUIRED

COMMENTS:

DATE	ROUTING SYMBOL	SIGNATURE
------	----------------	-----------



ESV Details

Originating Office :NFPO		Airspace Docket Number :		Request Type :Establish		
Facility Data						
Chart Name:ILS Z RWY 12 KEAT		City:WENATCHEE		Ident:ADJ		State:WA
Type/Class: DME		Frequency: M1117		Reference Number: 22066825		
Extended Service Volume Data: (Requesting Officer)						
ESV ID	Radial 1	Radial 2	Distance	Minimum Altitude	Maximum Altitude	
FAA 050213 - 015	300		25	86	90	
Requirement: INTERMEDIATE FIX TO SUPPORT 25 DME ARC						
Signature:Clark Richard		Routing Symbol:AJV-432				Date:06/21/2022
Extended Service Volume Data: (FMO)						
ESV ID	Radial 1	Radial 2	Distance	Minimum Altitude	Maximum Altitude	Action Type
FAA 050213 - 015	300		25	86	90	APPROVE
Requirement/Remarks: INTERMEDIATE FIX TO SUPPORT 25 DME ARCAPPROVED. FREQ. PROTECTION & FIELD STRENGTH. PENDING FLIGHT INSPECT @ REQUIRED. DIST. & MIN ALT..						
Signature:Hughes Dennis		Routing Symbol:			Date:06/30/2022	
Extended Service Volume Data: (Super FMO)						
ESV ID	Radial 1	Radial 2	Distance	Minimum Altitude	Maximum Altitude	Action Type
FAA 050213 - 015	300		25	86	90	APPROVE
Requirement/Remarks: INTERMEDIATE FIX TO SUPPORT 25 DME ARCAPPROVED. FREQ. PROTECTION & FIELD STRENGTH. PENDING FLIGHT INSPECT @ REQUIRED. DIST. & MIN ALT..						
Signature:Hughes Dennis		Routing Symbol:			Date:06/30/2022	
Extended Service Volume Data: (FIFO)						
ESV ID	Radial 1	Radial 2	Distance	Minimum Altitude	Maximum Altitude	Action Type
FAA 050213 - 015	300					
Requirement/Remarks:						
Signature:		Routing Symbol:			Date:	

ESV Details

Originating Office :NFPO		Airspace Docket Number :		Request Type :Establish		
Facility Data						
Chart Name:ILS Z RWY 12		City:WENATCHEE		Ident:ADJ		State:WA
Type/Class: GS		Frequency: M331.85		Reference Number: 22066824		
Extended Service Volume Data: (Requesting Officer)						
ESV ID	Radial 1	Radial 2	Distance	Minimum Altitude	Maximum Altitude	
FAA 050212 - 003	300		25	86	90	
Requirement: INTERMEDIATE FIX TO SUPPORT 25 DME ARC						
Signature:Clark Richard		Routing Symbol:AJV-A432				Date:06/21/2022
Extended Service Volume Data: (FMO)						
ESV ID	Radial 1	Radial 2	Distance	Minimum Altitude	Maximum Altitude	Action Type
FAA 050212 - 003	300		25	86	90	APPROVE
Requirement/Remarks: INTERMEDIATE FIX TO SUPPORT 25 DME ARCAPPROVED. FREQ. PROTECTION & FIELD STRENGTH. PENDING FLIGHT INSPECT @ REQUIRED. DIST. & MIN ALT..						
Signature:Hughes Dennis		Routing Symbol:			Date:06/30/2022	
Extended Service Volume Data: (Super FMO)						
ESV ID	Radial 1	Radial 2	Distance	Minimum Altitude	Maximum Altitude	Action Type
FAA 050212 - 003	300		25	86	90	APPROVE
Requirement/Remarks: INTERMEDIATE FIX TO SUPPORT 25 DME ARCAPPROVED. FREQ. PROTECTION & FIELD STRENGTH. PENDING FLIGHT INSPECT @ REQUIRED. DIST. & MIN ALT..						
Signature:Hughes Dennis		Routing Symbol:			Date:06/30/2022	
Extended Service Volume Data: (FIFO)						
ESV ID	Radial 1	Radial 2	Distance	Minimum Altitude	Maximum Altitude	Action Type
FAA 050212 - 003	300					
Requirement/Remarks:						
Signature:		Routing Symbol:			Date:	

ESV Details

Originating Office :NFPO		Airspace Docket Number :		Request Type :Establish		
Facility Data						
Chart Name:ILS Z RWY 12		City:WENATCHEE		Ident:ADJ		State:WA
Type/Class: LOC		Frequency: M109.35		Reference Number: 22066823		
Extended Service Volume Data: (Requesting Officer)						
ESV ID	Radial 1	Radial 2	Distance	Minimum Altitude	Maximum Altitude	
FAA 050211 - 016	300		25	86	90	
Requirement: INTERMEDIATE FIX TO SUPPORT 25 DME ARC						
Signature:Clark Richard		Routing Symbol:AJV-A432				Date:06/21/2022
Extended Service Volume Data: (FMO)						
ESV ID	Radial 1	Radial 2	Distance	Minimum Altitude	Maximum Altitude	Action Type
FAA 050211 - 016	300		25	86	90	APPROVE
Requirement/Remarks: INTERMEDIATE FIX TO SUPPORT 25 DME ARCAPPROVED. FREQ. PROTECTION & FIELD STRENGTH. PENDING FLIGHT INSPECT @ REQUIRED. DIST. & MIN ALT..						
Signature:Hughes Dennis		Routing Symbol:			Date:06/30/2022	
Extended Service Volume Data: (Super FMO)						
ESV ID	Radial 1	Radial 2	Distance	Minimum Altitude	Maximum Altitude	Action Type
FAA 050211 - 016	300		25	86	90	APPROVE
Requirement/Remarks: INTERMEDIATE FIX TO SUPPORT 25 DME ARCAPPROVED. FREQ. PROTECTION & FIELD STRENGTH. PENDING FLIGHT INSPECT @ REQUIRED. DIST. & MIN ALT..						
Signature:Hughes Dennis		Routing Symbol:			Date:06/30/2022	
Extended Service Volume Data: (FIFO)						
ESV ID	Radial 1	Radial 2	Distance	Minimum Altitude	Maximum Altitude	Action Type
FAA 050211 - 016	300					
Requirement/Remarks:						
Signature:		Routing Symbol:			Date:	

ESV Details

Originating Office :CNI		Airspace Docket Number :		Request Type :Establish		
Facility Data						
Chart Name:EWJOR		City:WENATCHEE		Ident:ADJ		State:WA
Type/Class: DME		Frequency: M1117		Reference Number: 24016142		
Extended Service Volume Data: (Requesting Officer)						
ESV ID	Radial 1	Radial 2	Distance	Minimum Altitude	Maximum Altitude	
FAA 050213 - 016	300		16	68	68	
Requirement: NEW PFAF FOR ILS Z RWY 12						
Signature:Cyrus Theron		Routing Symbol:AJV-A432				Date:01/18/2024
Extended Service Volume Data: (FIFO)						
ESV ID	Radial 1	Radial 2	Distance	Minimum Altitude	Maximum Altitude	Action Type
FAA 050213 - 016	300					
Requirement/Remarks:						
Signature:		Routing Symbol:			Date:	

ESV Details

Originating Office :CNI		Airspace Docket Number :		Request Type :Establish		
Facility Data						
Chart Name:EWJOR		City:WENATCHEE		Ident:ADJ		State:WA
Type/Class: GS		Frequency: M331.85		Reference Number: 24016141		
Extended Service Volume Data: (Requesting Officer)						
ESV ID	Radial 1	Radial 2	Distance	Minimum Altitude	Maximum Altitude	
FAA 050212 - 004	300		16	68	68	
Requirement: NEW PFAF FOR ILS Z RWY 12						
Signature:Cyrus Theron		Routing Symbol:AJV-A432				Date:01/18/2024
Extended Service Volume Data: (FIFO)						
ESV ID	Radial 1	Radial 2	Distance	Minimum Altitude	Maximum Altitude	Action Type
FAA 050212 - 004	300					
Requirement/Remarks:						
Signature:		Routing Symbol:			Date:	

ESV Details

Originating Office :CNI		Airspace Docket Number :		Request Type :Establish		
Facility Data						
Chart Name:EWJOR		City:WENATCHEE		Ident:ADJ		State:WA
Type/Class: LOC		Frequency: M109.35		Reference Number: 24016004		
Extended Service Volume Data: (Requesting Officer)						
ESV ID	Radial 1	Radial 2	Distance	Minimum Altitude	Maximum Altitude	
FAA 050211 - 017	300		16	68	68	
Requirement: NEW PFAF FOR ILS Z RWY 12						
Signature:Cyrus Theron		Routing Symbol:AJV-A432				Date:01/18/2024
Extended Service Volume Data: (FIFO)						
ESV ID	Radial 1	Radial 2	Distance	Minimum Altitude	Maximum Altitude	Action Type
FAA 050211 - 017	300					
Requirement/Remarks:						
Signature:		Routing Symbol:			Date:	