

Flight Procedures Cover Page	Task Action: FLIGHT CHECK	Task Type: IAP	Estimated Chart Date: 12/02/2021	APWS Task ID: 7E3907A1256C4C7E86F994C2027EB7CA	APWS Project ID: 155B5285A80F4FB8B420861F84645231
Procedure: RNAV (GPS) Y RWY 4 AMDT 1D		Enroute: NO	Specialist: Sarmiento, April		Agreement Number:
Airport ID: KMWH		Airport City: MOSES LAKE		State: WA	
Facility ID:	Facility Type:	Flight Inspection Remark Type: New FC Slot			
<p>Procedure Comments: CANCELS NOTAM 1/6342</p> <p>ACTIVE DATA USED FOR KMWH</p> <p>REQUEST TABLE TOP REVIEW IAW TECHNICAL SUPPORT GROUP (AJF-17) MEMO DATED 07/07/2021, SUBJECT: GUIDANCE FOR PROCEDURAL CHANGES REQUIRING FLIGHT INSPECTION/VALIDATION.</p> <p>CRC REMAINDER CHANGED FROM C29706E4 TO D09A0A0C - FPAP LAT/LONG CHANGED FROM 471245.9800N/1191801.1000W TO 471245.9880N/1191801.0885W</p> <p>CONTACT JON DENTON (405)954-5467</p>					

QUALITY
10
CHECKED

QUALITY
38
CHECKED

FIPC BASIC FORM							
PROCEDURE: RNAV (GPS) Y RWY 4 AMDT 1D			AIRPORT NAME: GRANT COUNTY INTL		AIRPORT ID: KMWH	SPECIAL CONTROL NO: SG-11-130-21	
FAC ID: KMWH04.01Y		CITY: MOSES LAKE			ST: WA	ORIG CHART DATE: 03/24/2022	
DFL TYPE: PROC/S	THIRD PARTY: <input type="checkbox"/> YES	EST. TIME ON SITE: 0.4	REIMB. NUMBER:		PTS TASK ID:		
PREFLIGHT NOTES							
REVIEWER:					DATE:		
COMMENTS:					CHECK ONE:		
					<input type="checkbox"/> FLT CK REQ <input type="checkbox"/> NFCR <input type="checkbox"/> REJECT		
							YES
					CPV COMPLETE?		X
PROCEDURE RESULTS							
INSPECTION DATE: 12/15/2021		CREW #: VN075	N #: N56	INSTRUMENT PROCEDURE STATUS: <input checked="" type="checkbox"/> SAT <input type="checkbox"/> SAT W/CHANGES <input type="checkbox"/> UNSAT		ARINC CODING: <input checked="" type="checkbox"/> SAT <input type="checkbox"/> SAT/GOLD <input type="checkbox"/> UNSAT	
FLIGHT INSPECTOR SIGNATURE: joel f hawkley @ 12/15/2021 20:30			PRINTED NAME: HAWKLEY, JOEL FEWENS				NOTAM INITIATED? <input type="checkbox"/> YES <input checked="" type="checkbox"/> NO
FLIGHT INSPECTOR REMARKS: KMWH04.01Y PROC/S SG-11-130-21 Grant County Intl, Moses Lake, WA, RNAV (GPS) Y RWY 4, Amdt 1D, Complete Satisfactory.							
IN-FLIGHT OBSTACLE REPORT							
OBSTRUCTION ID #:	COORDINATES OR LOCATION:		GNSS ALTITUDE (MSL):		BAROMETRIC ALTITUDE (MSL):		HEIGHT ABOVE GROUND LEVEL:

MOSES LAKE, WASHINGTON

AL-961 (FAA)

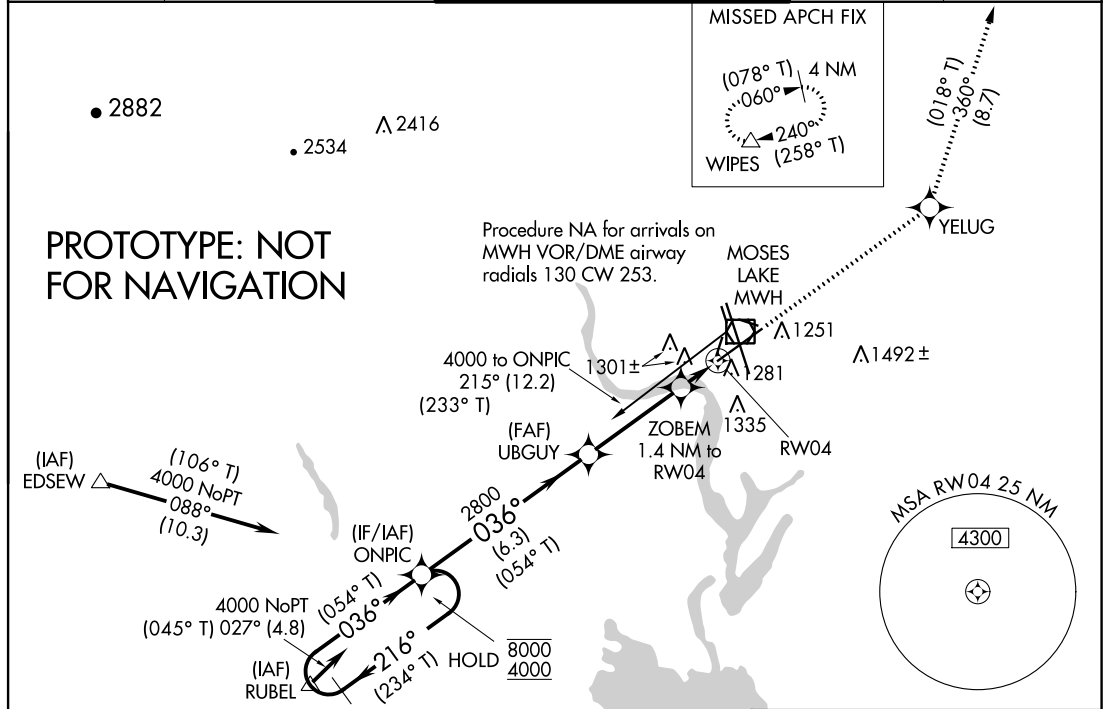
FIG

WAAS CH 42809 W04A	APP CRS 036°	Rwy Idg TDZE 1189 Apt Elev 1189
----------------------------------------	------------------------	-----------------------------------------------------

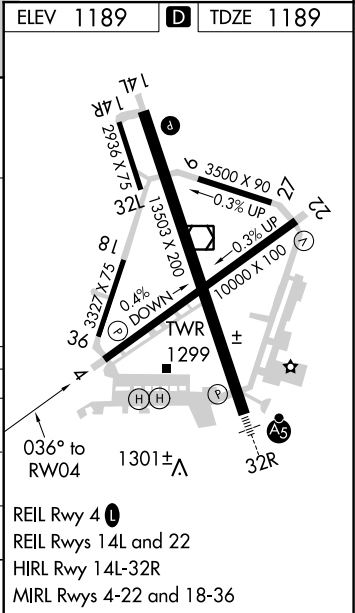
RNAV (GPS) Y RWY 4 GRANT COUNTY INTL (MWH)

RNP AR APCH - GPS.		MISSED APPROACH: Climb to 4000 direct YELUG and on track 360° to WIPES and hold.
<div><div>T</div><div>A</div></div>	Circling Rwy 9/27, 18/36 NA at night. For uncompensated Baro-VNAV systems, LNAV/VNAV NA below -1.5°C or above 54°C.	

ATIS 119.05	GRANT COUNTY APP CON ★ 126.4 379.95	GRANT COUNTY TOWER ★ 118.25 (CTAF) 257.8 (EAST) 128.0 257.8 (WEST)	GND CON 121.9	UNICOM 122.95
-----------------------	-----------------------------------------------	----------------------------------------------------------------------------------------	-------------------------	-------------------------



4 NM Holding Pattern		ONPIC	4000	YELUG	tr 360°	WIPES
8000 ← 216° (234° T)		ONPIC	2800	UBGUY	ZOBEM 1.4 NM to RW04	RW04
4000 → 036° (054° T)		ONPIC	2800	UBGUY	ZOBEM 1.4 NM to RW04	RW04
GP 3.00° TCH 50		ONPIC	2800	UBGUY	ZOBEM 1.4 NM to RW04	RW04
6.3 NM		ONPIC	2800	UBGUY	ZOBEM 1.4 NM to RW04	RW04
3.5 NM		ONPIC	2800	UBGUY	ZOBEM 1.4 NM to RW04	RW04
1.4 NM		ONPIC	2800	UBGUY	ZOBEM 1.4 NM to RW04	RW04
CATEGORY	A	B	C	D		
LPV DA	1389-¾		200 (200-¾)			
LNAV/VNAV DA	1461-7/8		272 (300-7/8)			
LNAV MDA	1560-1		371 (400-1)			
CIRCLING	1660-1	471 (500-1)	1680-1½	491 (500-1½)	1820-2	631 (700-2)



MOSES LAKE, WASHINGTON
Amdt 1D FIG

47°13'N-119°19'W

GRANT COUNTY INTL (MWH) **RNAV (GPS) Y RWY 4**

AUTOMATED AL-961 RNAV (GPS) Y RWY 4

NW-1
2 NOV 2021
COMPILER: CG
REVIEWER:
DBL CHKR:
EFF DATE: FIG

RNAV (GPS) Y RWY 4

MISSED APPROACH: Climb to 4000 direct YELUG and on track 360° to WIPES and hold.

UNICOM
122.95

GRANT COUNTY INTL (MWH)
RNAV (GPS) Y RWY 4

