

Flight Procedures Cover Page	Task Action: P-NOTAM	Task Type: IAP	Estimated Chart Date: 08/11/2022	APWS Task ID: 7D133F7B9D504C79A3E043C6EAE115E2	APWS Project ID: 43C02BD4F814404FAFBA2695C45BC6CF
Procedure: RNAV (GPS) RWY 25 AMDT 1B		Enroute: NO	Specialist: Boone-walt, Rose		Agreement Number:
Airport ID: 0G6			Airport City: BRYAN		State: OH
Facility ID:	Facility Type:	Flight Inspection Remark Type:			
<p>Procedure Comments: CIRCLING RADII INCREASE</p> <p>CONTACT: JASON KRETSCHMER AJV-A421 LEAD: 405.954.4019</p> <p style="text-align: center;"><i>Digitally signed by</i> JASON KRETSCHMER Jun 22, 2022</p> <div style="position: absolute; top: 270px; right: 100px; color: green; text-align: center;"> QUALITY 9 CHECKED </div> <div style="position: absolute; bottom: 100px; right: 100px; color: green; text-align: center;"> QUALITY 40 CHECKED </div>					

WAAS CH 40427 W25A	APP CRS 253°	Rwy Idg TDZE Apt Elev	4153 730 730
--	------------------------	-----------------------------	---

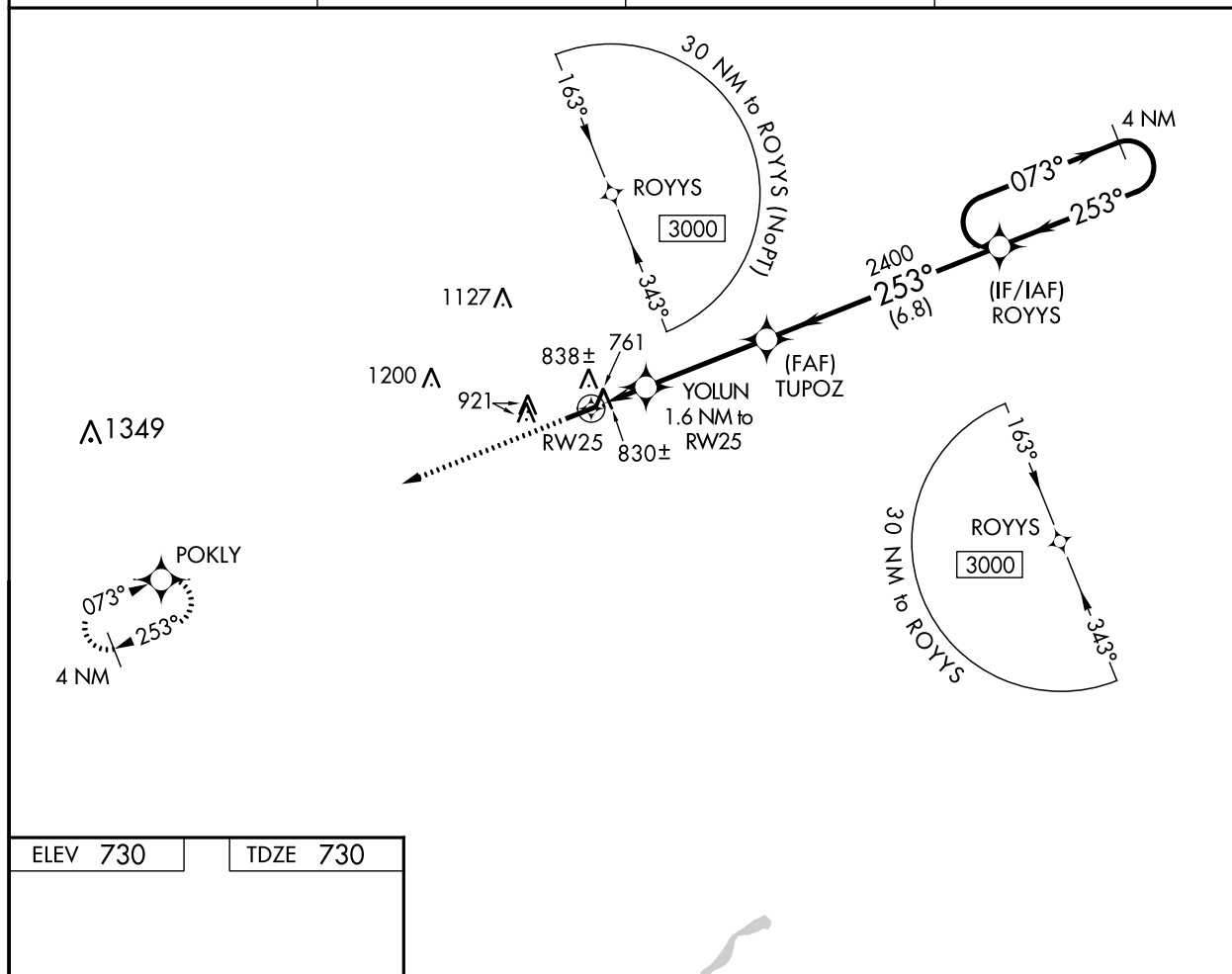
OLD

RNAV (GPS) RWY 25

WILLIAMS COUNTY (ØG6)

<p>▼ When VGSI inop, Straight-in/Circling Rwy 25 procedure NA at night. DME/DME RNP-0.3 NA. Helicopter visibility reduction below 1 SM NA. Use Defiance Memorial altimeter setting; when not received, use De Kalb County altimeter setting and increase all MDA 60 feet, increase LP and LNAV Cat C/D and Circling Cat C visibility ¼ mile.</p> <p>▲ NA</p>	<p>MISSED APPROACH: Climb to 3000 direct POKLY and hold.</p>
--	---

DFI ASOS 121.425	TOLEDO APP CON 134.35 307.0	UNICOM 122.8 (CTAF)	123.0
----------------------------	---------------------------------------	-------------------------------	--------------



ELEV 730	TDZE 730	3000	POKLY	YOLUN 1.6 NM to RW25	TUPOZ	ROYYS	4 NM Holding Pattern
		253° to RW25		1260	2400	3000	
		1.6 NM	3.5 NM	6.8 NM			
CATEGORY	A	B	C	D			
LP MDA	1120-1	390 (400-1)	1120-1½	390 (400-1½)			
LNAV MDA	1140-1	410 (500-1)	1140-1½	410 (500-1½)			
CIRCLING	1300-1	570 (600-1)	1300-1½	570 (600-1½)	1300-2	570 (600-2)	

LIRL Rwy 7-25 **Ø**
REIL Rwy 7 and 25 **Ø**

