

Flight Procedures Cover Page	Task Action: P-NOTAM	Task Type: IAP	Estimated Chart Date: 12/30/2021	APWS Task ID: 7C98F09621D5483696EFA6ED24544296	APWS Project ID: 606EBC11B4B64C558886C71224B16A87
Procedure: RNAV (GPS) RWY 18 AMDT 1B		Enroute: NO	Specialist: Brooks, Charles		Agreement Number:
Airport ID: KSLO			Airport City: SALEM		State: IL
Facility ID:	Facility Type:	Flight Inspection Remark Type:			
<p>Procedure Comments: P-NOTAM</p> <p>CIRCLING RADII INCREASE.</p> <p>CONTACT JASON KRETSCHMER, AJV-A421, 405-954-4019</p> <div style="display: flex; justify-content: space-between; align-items: flex-end; margin-top: 20px;"> <div style="text-align: center;"> <p><i>Digitally signed by</i> JASON KRETSCHMER Nov 08, 2021</p> </div> <div style="text-align: center;"> <p><i>Digitally signed by</i> MARY MCDONALD Nov 05, 2021</p> </div> </div>					

QUALITY
47
CHECKED

QUALITY
12
CHECKED

OLD

SALEM, ILLINOIS

AL-5364 (FAA)

21056

WAAS CH 78032 W18A	APP CRS 181°	Rwy Idg TDZE Apt Elev 4098 573 573
--	------------------------	--

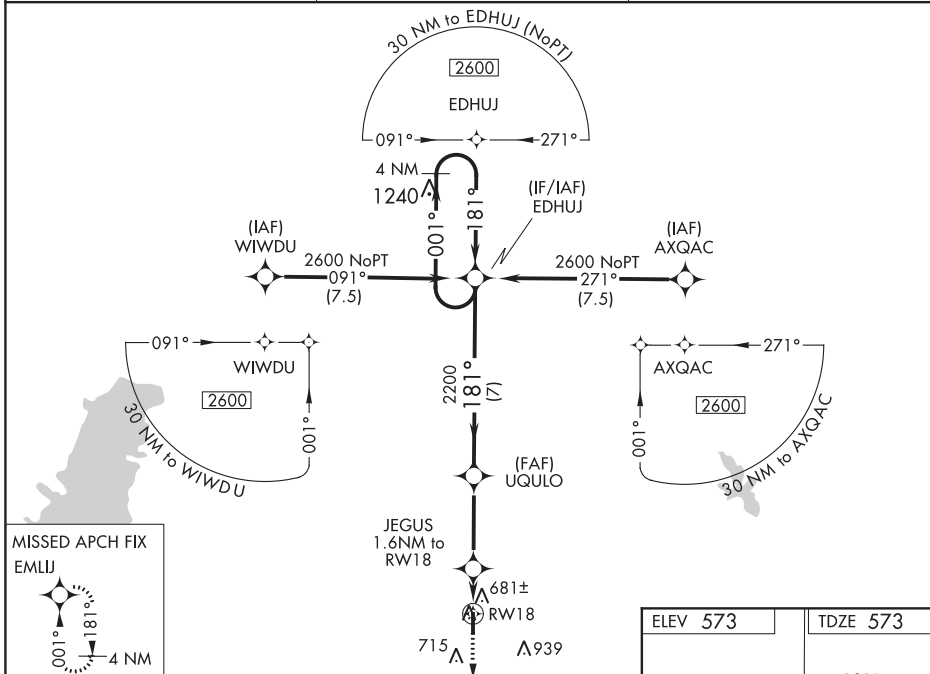
RNAV (GPS) RWY 18

SALEM-LECKRONE (SLO)

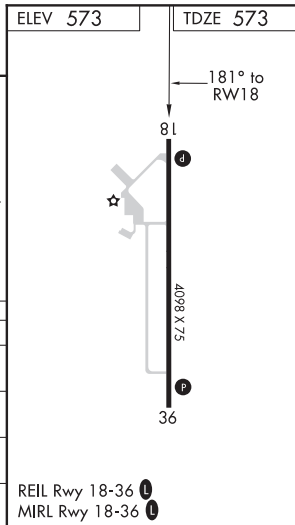
⚠ Baro-VNAV NA when using Centralia altimeter setting. For uncompensated Baro-VNAV systems, LNAV/VNAV NA below -21°C (-5°F) or above 54°C (130°F). When local altimeter setting not received, use Centralia altimeter setting and increase all DA 28 feet and all MDA 40 feet; increase LNAV/VNAV all Cts visibility 1/8 mile, LNAV Cts C/D visibility 1/8 mile, Circling Cat D visibility 1/4 mile. DME/DME RNP-0.3 NA.

MISSED APPROACH:
Climb to 2600 direct EMLJ and hold.

AWOS-3 118.525	KANSAS CITY CENTER 127.7 351.825	UNICOM 122.8 (CTAF) 0
--------------------------	--	---------------------------------



2600		EMLJ	
*LNAV Only		JEGUS 1.6 NM to RW18	
RW18		2200	
1.5 NM		0.1 NM	
3.4 NM		7 NM	
CATEGORY	A	B	C
LPV DA	773-1	200 (200-1)	
LNAV/VNAV DA	862-1	289 (300-1)	
LNAV MDA	940-1	367 (400-1)	
CIRCLING	1040-1 467 (500-1)	1040-1 1/2 467 (500-1 1/2)	1240-2 667 (700-2)



SALEM, ILLINOIS

Amdt 1A 26JUN14

38°39'N-88°58'W

RNAV (GPS) RWY 18

EC-3, 15 JUL 2021 to 12 AUG 2021

EC-3, 15 JUL 2021 to 12 AUG 2021

