

Flight Procedures Cover Page	Task Action: Abbreviated Amendment	Task Type: IAP	Estimated Chart Date: 06/15/2023	APWS Task ID: 7AE29AE8E2A84A7292446367B13FF448	APWS Project ID: 4043B8A18F154E31933B664F13949DA2
Procedure: ILS OR LOC RWY 9C AMDT 0A		Enroute: NO	Specialist: Blanco, Joseph		Agreement Number:
Airport ID: KORD			Airport City: CHICAGO		State: IL
Facility ID: OYG	Facility Type: ILS	Flight Inspection Remark Type:			
<div>Procedure Comments:</div> <div>PROCESSED IAW TECHNICAL SUPPORT GROUP (AJF-17) MEMO DATED 07/07/2021 GUIDANCE FOR PROCEDURAL CHANGES REQUIRING FLIGHT INSPECTION/VALIDATION</div> <div>Contact Casimir Tabaka (405) 954-7931</div> <div>04/17/2023: THIS IS A CORRECTED COPY OF THE FORM APPROVED ON 04/14/2023.</div> <div>1. PROFILE LINE 4 - CORRECTED MIN ALT FROM "NORDL/I-OYG 25.81 DME/RADAR 4000" TO "MIN ALT: NORDL/I-OYG 25.81 DME/RADAR 9000" - CLERICAL ERROR</div> <div>2. ADDITIONAL FLIGHT DATA - CORRECTED FROM "CHART AT OR ABOVE 4000 AT NORDL" TO "CHART AT OR ABOVE 9000 AT NORDL" - CLERICAL ERROR</div> <div><div>QUALITY 41 CHECKED</div><div>QUALITY 10 CHECKED</div></div>					

LOC/DME I-OYG <b>111.9</b> Chan <b>56</b>	APP CRS <b>093°</b>	Rwy Idg <b>11245</b> TDZE <b>673</b> Apt Elev <b>680</b>
---	------------------------	--

# **ILS RWY 9C (CAT II & III)** **CHICAGO O'HARE INTL (ORD)**

DME or RADAR required. From GIBNS: RNAV 1-GPS required. Aircraft not GPS equipped - RADAR required for procedure entry.

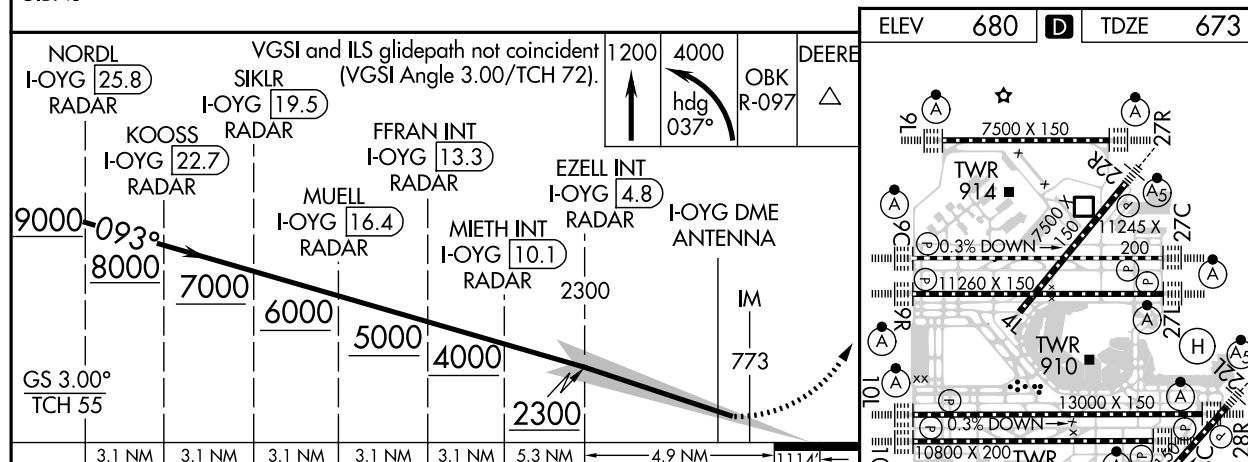
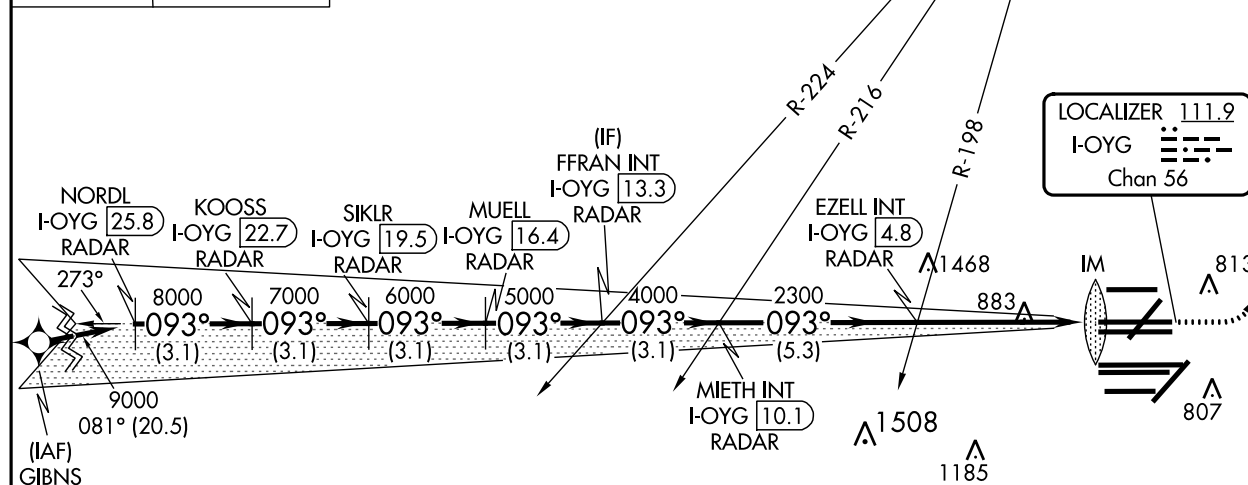
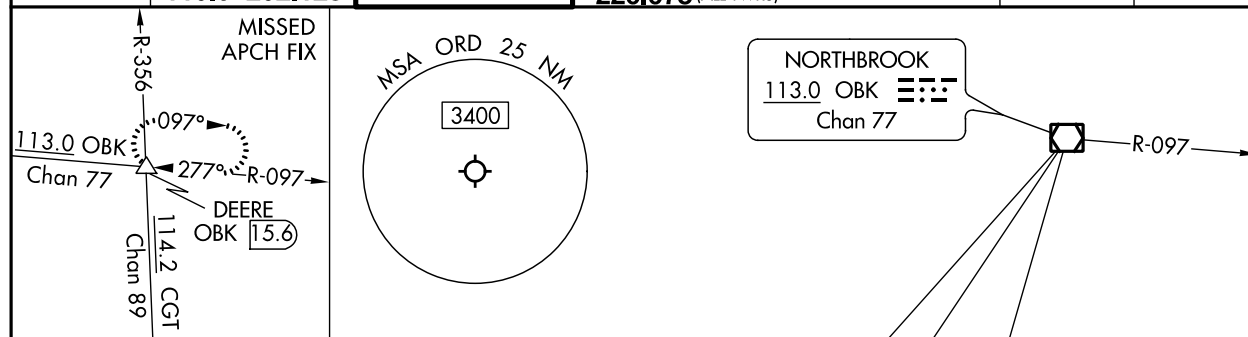
ALSF-2



MISSED APPROACH: Climb to 1200 then climbing left turn to 4000 on heading 037° and OBK VOR/DME R-097 to DEERE INT/ OBK 15.6 DME and hold.

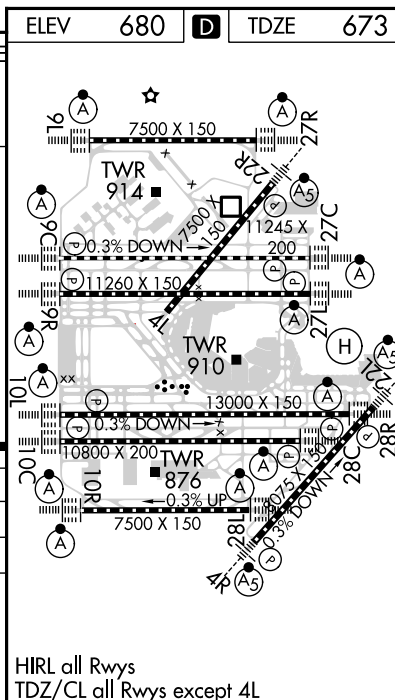
Simultaneous approach authorized. CAT II: RVR 1000 authorized with specific OPSPEC, MSPEC or LOA approval and use of Autoland or HUD to touchdown.

D-ATIS <b>135.4</b> <b>282.225</b>	CHICAGO APP CON <b>119.0 292.125</b>	O'HARE TOWER <b>121.15 348.0</b>	GND CON <b>124.125</b> (TWR NORTH) <b>118.05</b> (TWR SOUTH) <b>226.675</b> (ALL TWRs)	(TWR CENTER) <b>121.75</b> (OBND) <b>121.9</b> (IBND)	CLNC DEL <b>121.6</b>	CPDLC
--	--	-------------------------------------	---	---	--------------------------	-------



CATEGORY	A	B	C	D
S-ILS 9C	CAT II	RA 100/12	100 DA 773	
S-ILS 9C	CAT III	RVR 06		

**CATEGORY II & III ILS - SPECIAL AIRCREW  
& AIRCRAFT CERTIFICATION REQUIRED**



HIRL all Rwy's  
TDZ/CL all Rwy's except 4L