

Results Name: RS Results KFCM RNAV (GPS) Rwy 28L

Penetrating Obstacle

Penetrating Controller

Cleared Controller

Accuracy Code Overridden

Display Options

☒ Round for Publication
 ☒ Apply Acc Adj Vals for Controller

Course Display

☒ True
 ☐ Magnetic

Last evaluation: 16-Oct-2020 08:28:20

Reference Software version: 2.4.0

Project Chart Date: 02/25/2021

Initial

Intermediate

Final Segment

Minima

Missed Approach

Airspace Altitude

Circling

FAS Data Block

MSA

Results

Input

Show/Hide/Color OEA's

Procedure Notes

Circling Results

Obstacle Evaluation

Controlling Obstacles

Category A

Category B

Category C

Category D

Visual

Visual Area (Circling KFCM:RW36)

Visual Area (Circling KFCM:RW28L)

Visual Area (Circling KFCM:RW28R)

Visual Area (Circling KFCM:RW10R)

Visual Area (Circling KFCM:RW10L)

Visual Area (Circling KFCM:RW18)

20:1 Penetrating Obstacles

Considered Obstacles

Area	Name	Source	Obs Type	Lighted	Latitude	Longitude	Height (ft)	Height (ft) AGL	Height (ft) AMSL	AC (H/V (ft))	Effective Height (ft)	Distance to Centerline (ft)	Distance to Origin (ft)	20:1 Surface Height (ft) AMSL	20:1 Amount of Penetration (ft)
Visual Area (Circl...	27-051796	IFPA	TREE	NO	N44° 49' 53.78"	W093° 27' 09.98"	947.0	0.0	947.0	1A (+20/+3)	947.0	307.24	756.11	936.91	10.09
Visual Area (Circl...	27-051753	IFPA	TREE	NO	N44° 49' 56.37"	W093° 27' 18.40"	955.0	0.0	955.0	1A (+20/+3)	955.0	323.69	953.43	946.77	8.23
Visual Area (Circl...	27-051794	IFPA	BUILDING	NO	N44° 49' 53.95"	W093° 27' 17.86"	941.0	42.0	941.0	1A (+20/+3)	941.0	259.33	713.76	934.79	6.21

TARGETS 6.2 Results: 20:1 Penetrations Circling to RWY 18.

Of note is the fact the these are the same penetrations as listed in the 8-1-2014 Signed Approval Letter allowing for VGSI Mitigation to RWY 18!

RWY 18 is a "Circling Only" runway; there are no straight-in's to RWY 18.

Results Name: RS Results KFCM VOR RWY 36

Penetrating Obstacle

Penetrating Controller

Cleared Controller

Accuracy Code Overridden

Display Options

☒ Round for Publication

☒ Apply Acc Adj Vals for Controller

Course Display

☒ True

☐ Magnetic

Last evaluation: 29-Oct-2020 09:47:27

Reference Software version: 1.4.0

Project Chart Date: 02/25/2021

Final Segment

Minima

Circling

Results

Input

Show/Hide/Color OEA's

Procedure Notes

Flight Path

RASS

Obstacle Evaluation

VOR

VGS

Visual

Visual Area (NPA)

34:1 Penetrating Obstacles

20:1 Penetrating Obstacles

Considered Obstacles

Area	Name	Source	Obs Type	Lighted	Latitude	Longitude	Height (ft)	Height (ft) AGL	Height (ft) AMSL	AC (H/V (ft))	Effective Height (ft)	Distance to Centerline (ft)	Distance to Origin (ft)	20:1 Surface Height (ft) AMSL	20:1 Amount of Penetration (ft)
Visual Area (NPA)	27-051641	IFPA	TRAVERSE_WAY	NO	N44° 49' 15.20"	W093° 27' 18.30"	914.0	0.0	914.0	1A (+20/+3)	914.0	120.08	102.31	910.22	3.79
Visual Area (NPA)	27-022786	IFPA	FENCE	YES	N44° 49' 15.86"	W093° 27' 18.10"	910.0	7.0	910.0	1A (+20/+3)	910.0	127.42	34.33	906.82	3.19
Visual Area (NPA)	27-051652	IFPA	TRAVERSE_WAY	NO	N44° 49' 14.50"	W093° 27' 22.83"	916.0	0.0	916.0	1A (+20/+3)	916.0	197.22	207.01	915.45	0.55

TARGETS 6.2 Results: 20:1 Penetrations Straight-In to RWY 36.

RWY 36 has both Straight-In and Circling 20:1 Penetrations, and they are the same, except for some slight 20:1 penetration differences.

Note that there are only two "unlit" obstacles that need VGSI Mitigation. The 20:1 Traverse Ways need a new VGSI Mitigation Approval Ltr.

The 20:1 Tracker lists these obstacles in Tracker Entry #'s 768, 1219 and 1541. However, they are not accounted for in any Approval Ltrs.
 Old Obstacle ID KFCMT000456 = New Obstacle ID 27-051641
 Old Obstacle ID KFCMT000465 = New Obstacle ID 27-051652

Results Name: RS Results KFCM RNAV (GPS) Rwy 28L

Penetrating Obstacle

Penetrating Controller

Cleared Controller

Accuracy Code Overridden

Display Options

☒ Round for Publication
☒ Apply Acc Adj Vals for Controller

Course Display

☒ True
☐ Magnetic

Last evaluation: 16-Oct-2020 08:28:20

Reference Software version: 2.4.0

Project Chart Date: 02/25/2021

Initial

Intermediate

Final Segment

Minima

Missed Approach

Airspace Altitude

Circling

FAS Data Block

MSA

Results

Input

Show/Hide/Color OEA's

Procedure Notes

Circling Results

Obstacle Evaluation

Controlling Obstacles

Category A

Category B

Category C

Category D

Visual

Visual Area (Circling KFCM:RW36)

Visual Area (Circling KFCM:RW28L)

Visual Area (Circling KFCM:RW28R)

Visual Area (Circling KFCM:RW10R)

Visual Area (Circling KFCM:RW10L)

Visual Area (Circling KFCM:RW18)

20:1 Penetrating Obstacles

Considered Obstacles

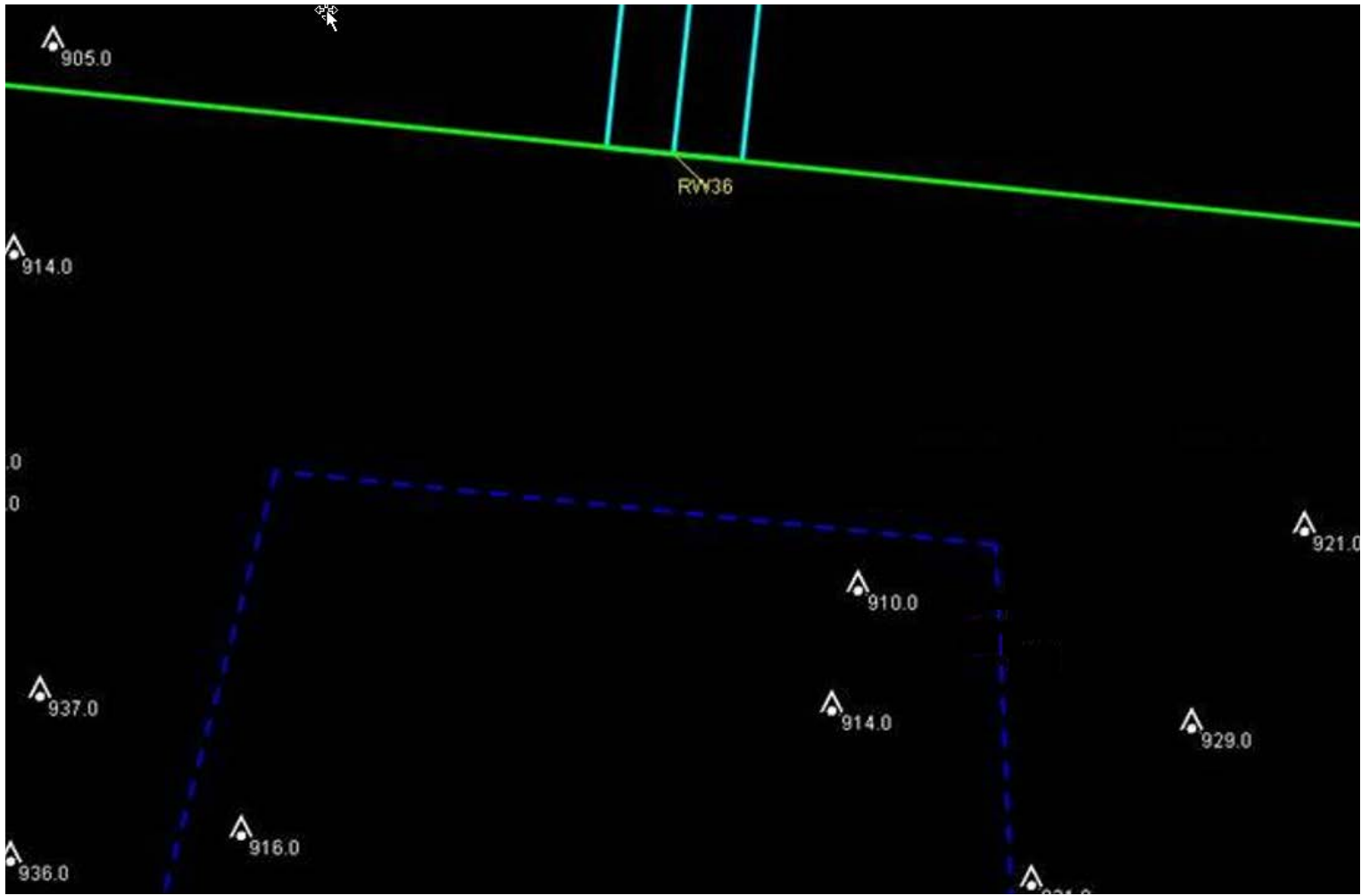
Area	Name	Source	Obs Type	Lighted	Latitude	Longitude	Height (ft)	Height (ft) AGL	Height (ft) AMSL	AC (H/V (ft))	Effective Height (ft)	Distance to Centerline (ft)	Distance to Origin (ft)	20:1 Surface Height (ft) AMSL	20:1 Amount of Penetration (ft)
Visual Area (Circling KFCM:RW36)	27-051641	IFPA	TRAVERSE_WAY	NO	N44° 49' 15.20"	W093° 27' 18.30"	914.0	0.0	914.0	1A (+20/+3)	914.0	120.08	102.31	910.22	3.78
Visual Area (Circling KFCM:RW28L)	27-022786	IFPA	FENCE	YES	N44° 49' 15.86"	W093° 27' 18.10"	910.0	7.0	910.0	1A (+20/+3)	910.0	127.42	34.33	906.82	3.18
Visual Area (Circling KFCM:RW28R)	27-051652	IFPA	TRAVERSE_WAY	NO	N44° 49' 14.50"	W093° 27' 22.83"	916.0	0.0	916.0	1A (+20/+3)	916.0	197.22	207.01	915.45	0.55

TARGETS 6.2 Results: 20:1 Penetrations Circling to RWY 36.

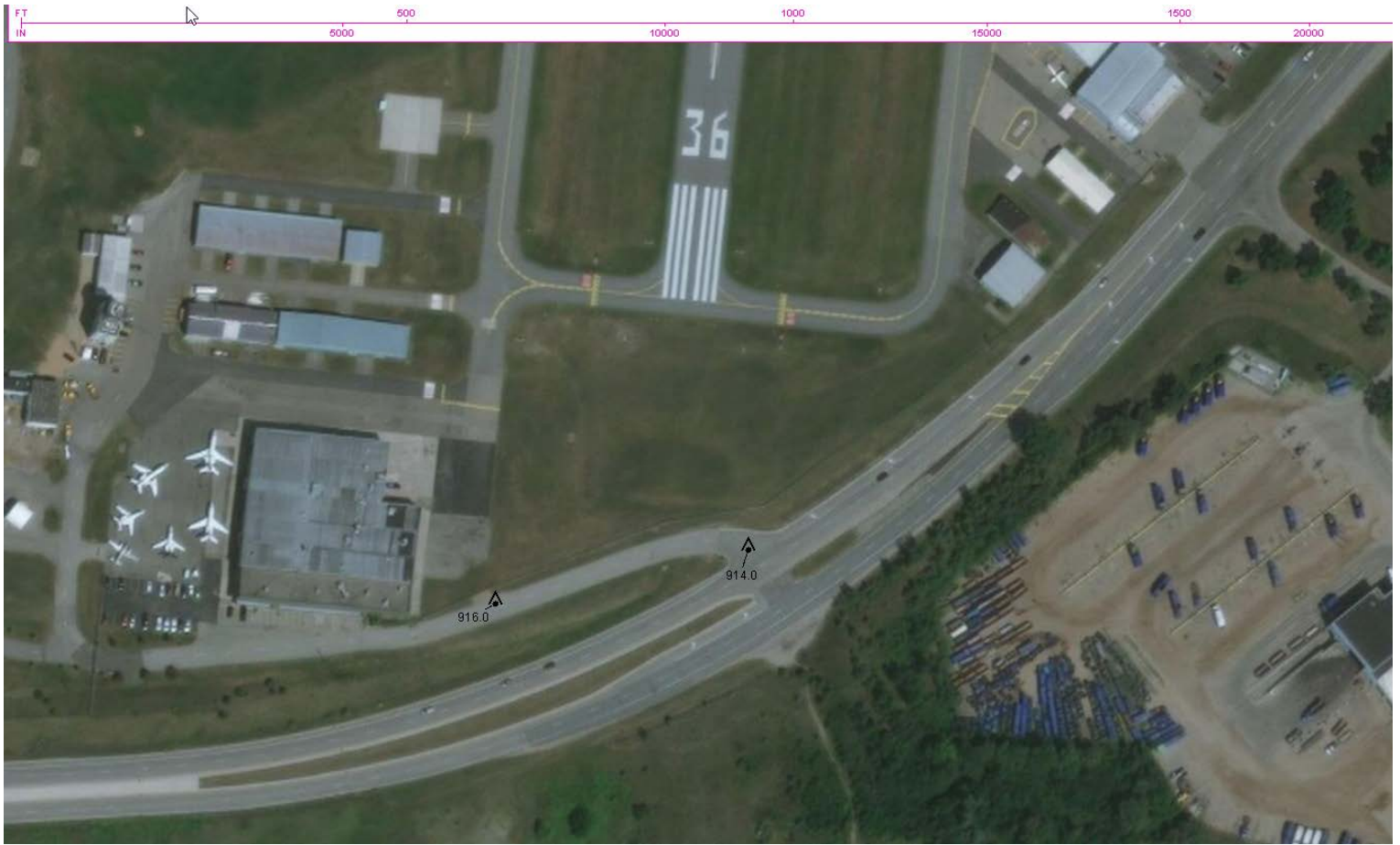
RWY 36 has the same Straight-In and Circling 20:1 Penetrations (some slight penetration differences).

Note that there are only two "unlit" obstacles that need VGSI Mitigation. The 20:1 Traverse Ways need a new VGSI Mitigation Approval Ltr.

The 20:1 Tracker lists these obstacles in Tracker Entry #'s 768, 1219 and 1541. However, they are not accounted for in any Approval Ltrs.
 Old Obstacle ID KFCMT000456 = New Obstacle ID 27-051641
 Old Obstacle ID KFCMT000465 = New Obstacle ID 27-051652



TARGETS with Visual Area in BLUE: Note that the 910 FENCE is lit (no factor)!



The road with the 20:1's can be accessed by anyone driving on the connecting public road (there is no "controlled access").



This is a ground-level pic of the road on the South end of RWY 36. for perspective.