

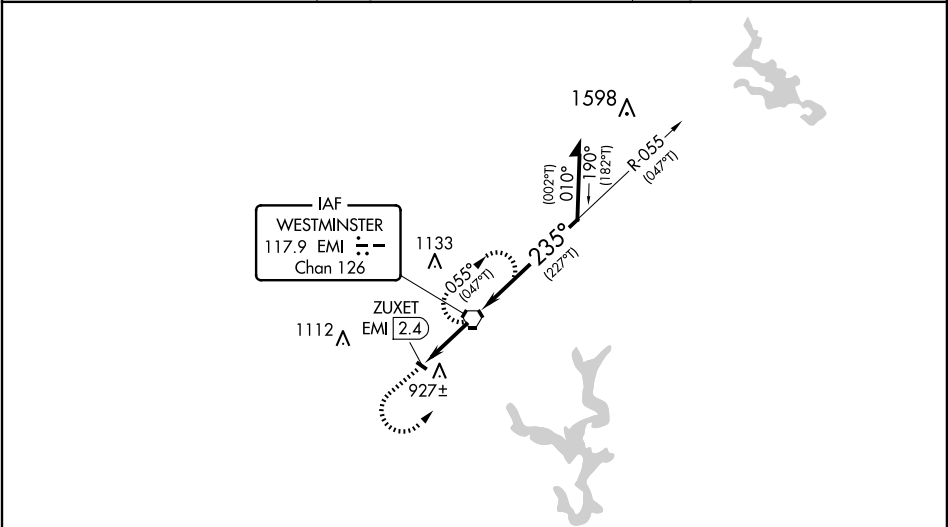
Flight Procedures Cover Page	Task Action: FLIGHT CHECK	Task Type: IAP	Estimated Chart Date: 06/12/2025	APWS Task ID: 7A6F87F81E524DF99347D6C063D40653	APWS Project ID: BE2A44C55BCE4866BB0176D2985FDA2F
Procedure: VOR-A AMDT 5		Enroute: NO	Specialist: Clark, Jacob		Agreement Number:
Airport ID: 2W2			Airport City: WESTMINSTER		State: MD
Facility ID: EMI	Facility Type: VORTAC	Flight Inspection Remark Type: New FC Slot			
<div>Procedure Comments: UPDATED MISSED APPROACH HOLDING TO: HOLD NE, RT, 235.11 INBOUND, FOR NAVAID RECEPTION. RAISED CIRCLING MINIMUMS TO 1320 / 521 EMI VOR R-179 UNUSABLE</div> <div>QUALITY 9 CHECKED BEGUE</div> <div>QUALITY 25 CHECKED</div>					

VORTAC EMI 117.9 Chan 126	APP CRS 235°	Rwy Idg TDZE Apt Elev 799	N/A N/A 799
---------------------------------	-----------------	------------------------------------	-------------------

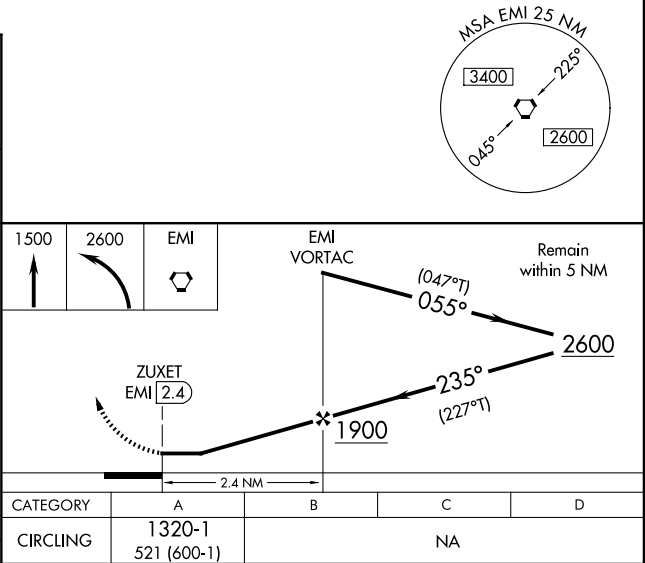
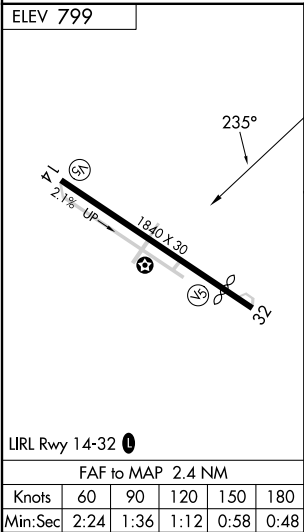
VOR-A
CLEARVIEW AIRPARK (2W2)

Procedure NA at night. Use DMW altimeter setting; when not received, use GAI altimeter setting and increase MDAs 60 feet.	MISSED APPROACH: Climb to 1500, then climbing left turn to 2600 on direct EMI VORTAC and hold, continue climb-in-hold.
---	--

DMW AWOS-3 121.25	POTOMAC APP CON 125.525 291.625	UNICOM 122.8 (CTAF) 0
----------------------	------------------------------------	--------------------------



PROTOTYPE-
NOT FOR NAVIGATION



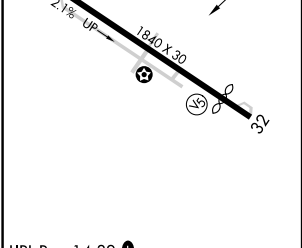
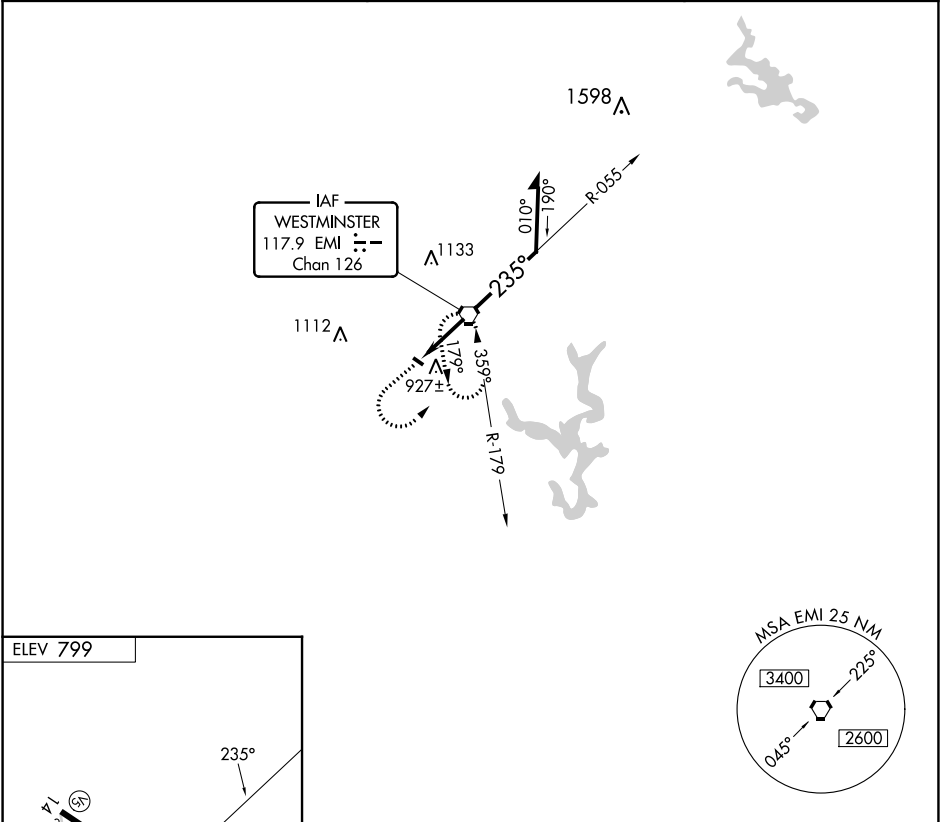
VORTAC EMI 117.9 Chan 126	APP CRS 235°	Rwy Idg TDZE Apt Elev N/A N/A 799
---	------------------------	---



VOR-A
CLEARVIEW AIRPARK (2W2)

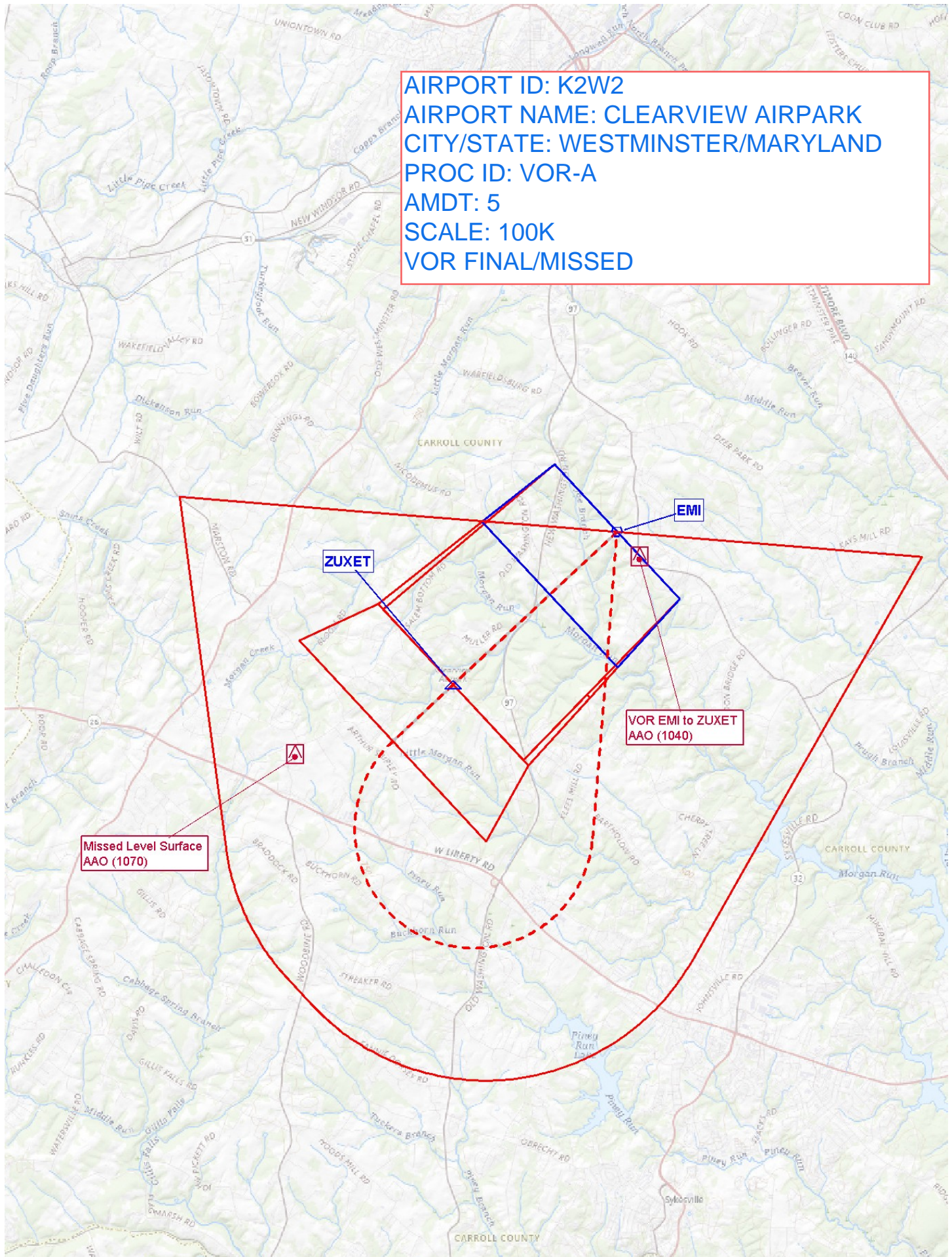
NA Use Carroll County Rgnl/Jack B Poage Fld altimeter setting. Procedure NA at night. Helicopter visibility reduction below 1 SM NA.	MISSED APPROACH: Climb to 1500, then climbing left turn to 2600 direct EMI VORTAC and hold.
--	--

DMW AWOS-3 121.25	POTOMAC APP CON 125.525 291.625	UNICOM 122.8 (CTAF) 0
-----------------------------	---	--

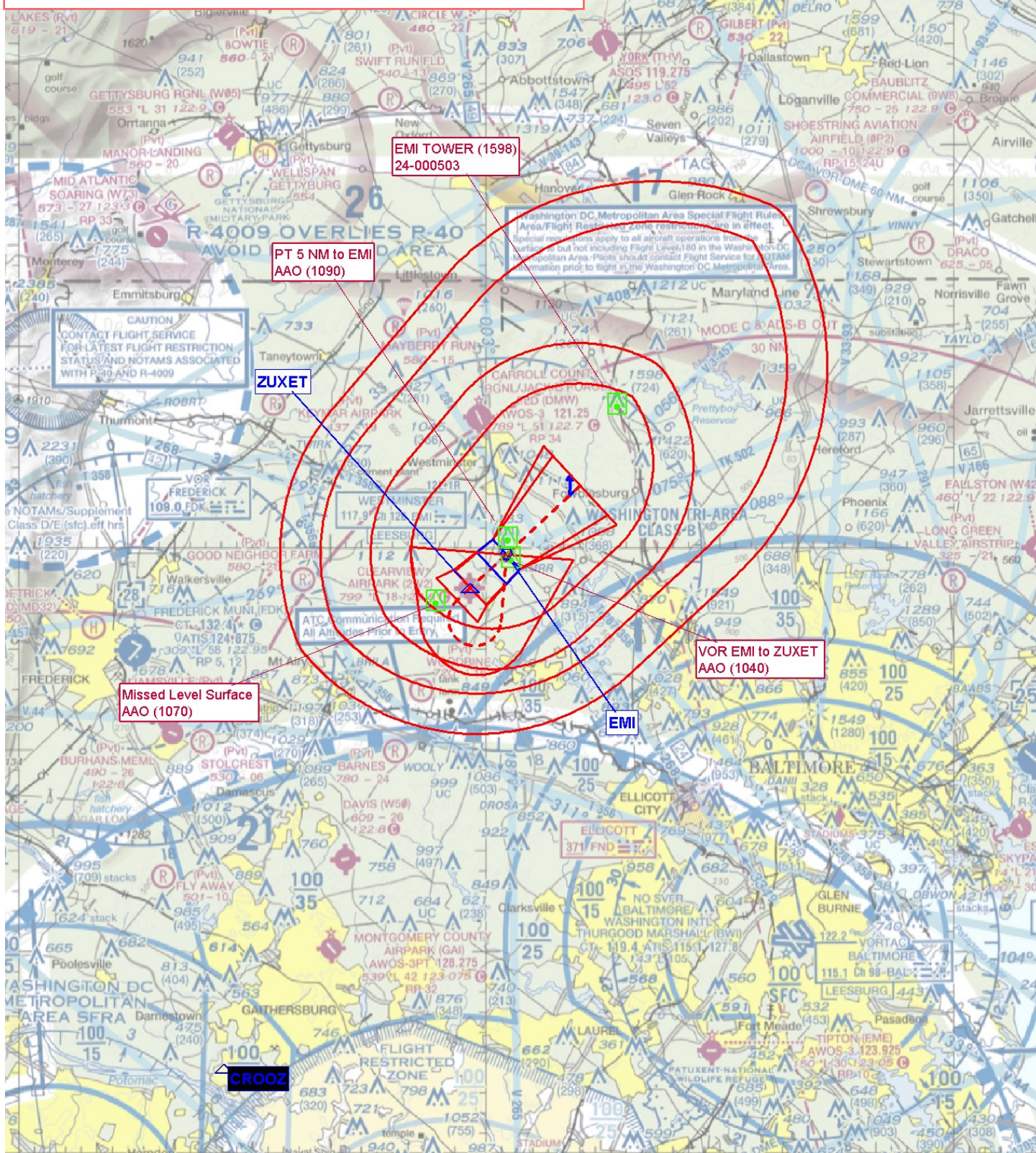


LIRL Rwy 14-32						2.4 NM									
FAF to MAP 2.4 NM						CATEGORY		A		B		C		D	
Knots		60	90	120	150	180	CIRCLING		1320-1						
Min:Sec		2:24	1:36	1:12	0:58	0:48			521 (600-1)		NA				

AIRPORT ID: K2W2
AIRPORT NAME: CLEARVIEW AIRPARK
CITY/STATE: WESTMINSTER/MARYLAND
PROC ID: VOR-A
AMDT: 5
SCALE: 100K
VOR FINAL/MISSED



VOR MISSED



AIRPORT ID: K2W2

AIRPORT NAME: CLEARVIEW AIRPARK

CITY/STATE: WESTMINSTER/MARYLAND

PROC ID: VOR-A

AMDT: 5

SCALE: 500K

VOR PT

PT 5 NM to EMI
AAO (1090)

ZUXET

PT Initial: PT 5 NM Entry
TOWER (1112)
24-000651

PT Initial: PT 5 NM Maneuvering
TOWER (1598)
24-000503

VOR EMI to ZUXET
AAO (1040)

Missed Level Surface
AAO (1070)

EMI

CROOZ

AIRPORT ID: K2W2
AIRPORT NAME: CLEARVIEW AIRPARK
CITY/STATE: WESTMINSTER/MARYLAND
PROC ID: VOR-A
AMDT: 5
SCALE: 100K
VOR CIRCLING

