

Flight Procedures Cover Page	Task Action: FLIGHT CHECK	Task Type: IAP	Estimated Chart Date: 10/31/2024	APWS Task ID: 79E6CAC5011A4B6FB7A65D7654D9D442	APWS Project ID: 32E31EFCA8624C4788B00D97BFC5F516
Procedure: ILS OR LOC RWY 22L AMDT 1		Enroute: YES	Specialist: Dean, Kelly		Agreement Number:
Airport ID: KLIT			Airport City: LITTLE ROCK		State: AR
Facility ID: LIT	Facility Type: VORTAC	Flight Inspection Remark Type: New FC Slot			
<div>Procedure Comments: ESV CANCELLATIONS (2): AAY LOC (FAA 759131-003) AAY DME (FAA 971582-002) POC FOR THIS ACTION IS CAS TABAKA 405-954-7931</div> <div>QUALITY 9 CHECKED BEGUE</div> <div>QUALITY 34 CHECKED</div>					

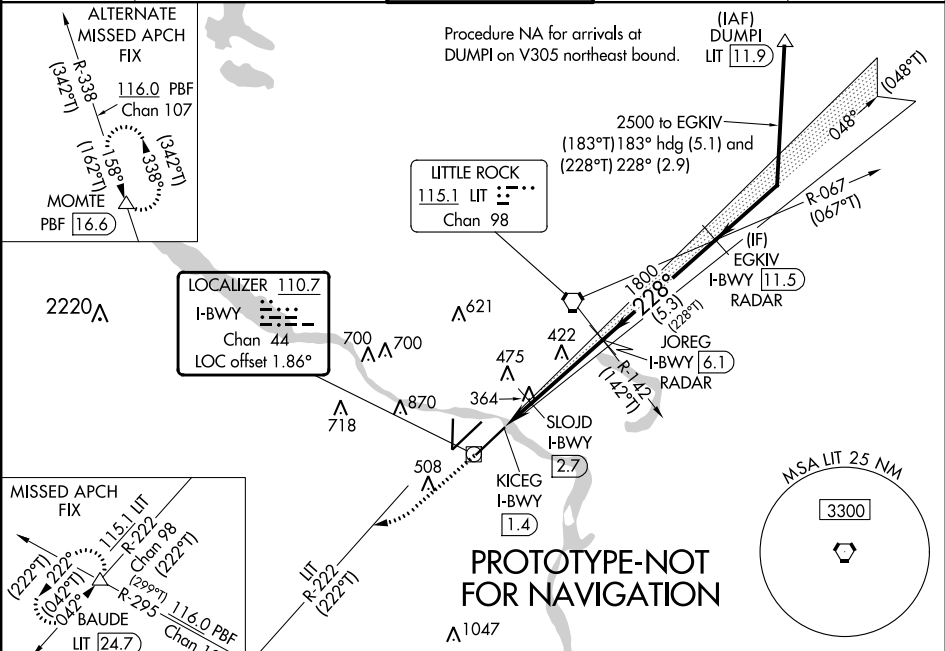
LOC/DME I-BWY	APP CRS	Rwy Idg	7200
110.7	228°	TDZE	260
Chan 44		Apt Elev	266

ILS or LOC RWY 22L

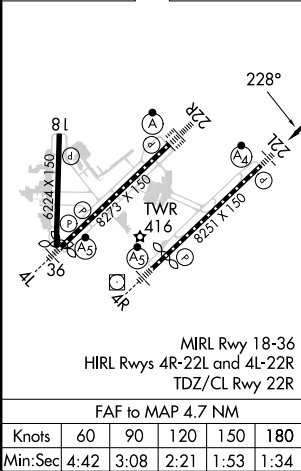
BILL AND HILLARY CLINTON NTL/ADAMS FLD (LIT)

DME or RADAR required.	MALSF	MISSED APPROACH: Climb to 800 then climbing right turn to 3000 on LIT VORTAC R-222 to BAUDE INT/LIT 24.7 DME and hold.
Simultaneous approach authorized. Inop table does not apply to S-ILS 22 all Cats. For inop ALS, increase S-LOC 22L Cats C/D visibility to 1½ SM.	A4	

D-ATIS	LITTLE ROCK APP CON	ADAMS TOWER	GND CON	CLNC DEL
125.65	135.4 353.6	118.7 257.8	121.9 339.8	118.95



ELEV 266	TDZE 260
----------	----------



800

↑

3000

↘

LIT

R-222

BAUDE

△

VGSI and ILS glidepath not coincident

(VGSI Angle 3.00/TCH 50).

JOEG

I-BWY

6.1

RADAR

EGKIV

I-BWY

11.5

RADAR

Use I-BWY DME when on the localizer course.

SLOJD

I-BWY

2.7

KICEG

I-BWY

1.4

228°

228°

2500

GS 3.00°

TCH 47

1800

720

1800

1.3 NM

3.4 NM

5.3 NM

CATEGORY	A	B	C	D
S-ILS 22L	510/40		250 (300-¾)	
S-LOC 22L	720/40	460 (500-¾)	720/55	460 (500-1)
CIRCLING	820-1 554 (600-1)	1000-1 734 (800-1)	1180-2¾ 914 (1000-2¾)	1180-3 914 (1000-3)
SLOJD FIX MINIMUMS (DME REQUIRED)				
S-LOC 22L	620/40		360 (400-¾)	
CIRCLING	820-1 554 (600-1)	1000-1 734 (800-1)	1180-2¾ 914 (1000-2¾)	1180-3 914 (1000-3)

LITTLE ROCK, ARKANSAS

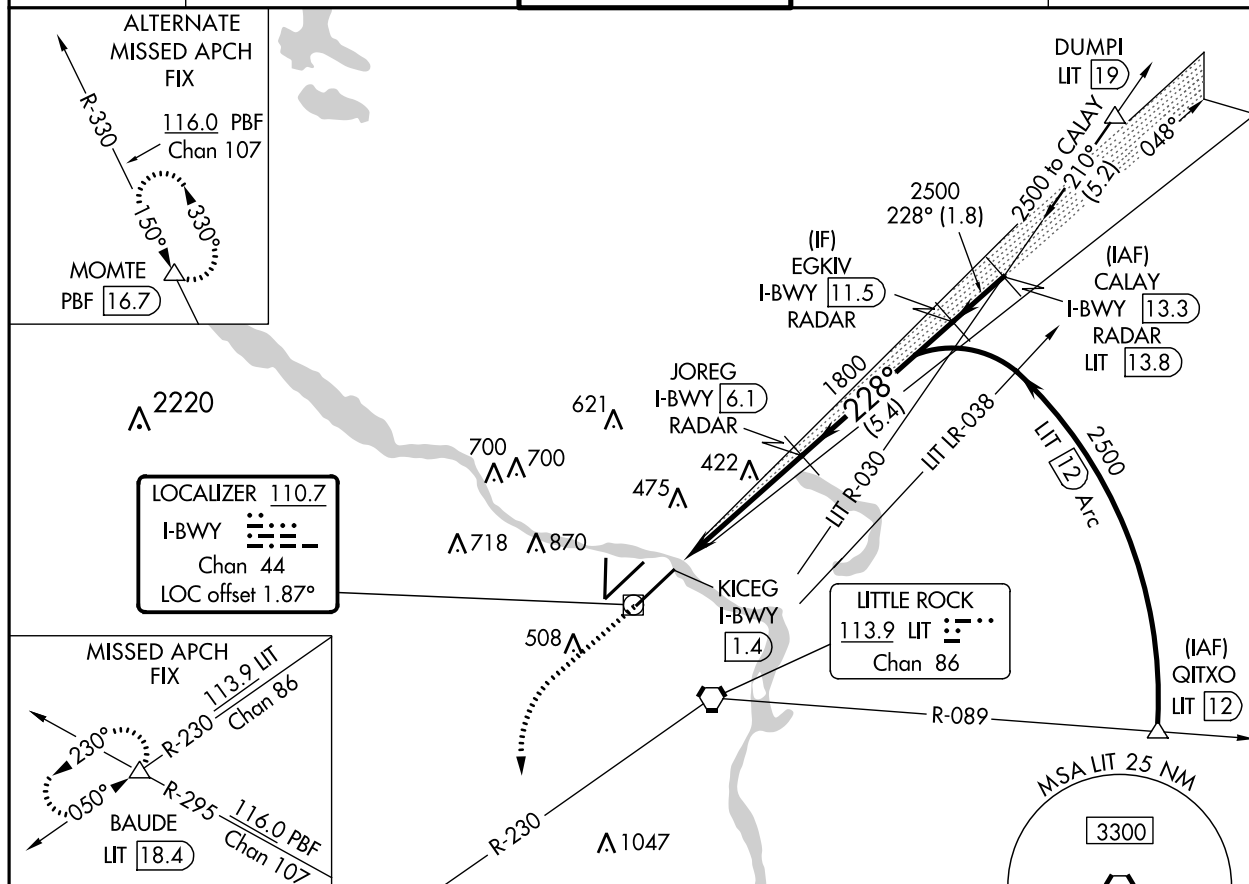
OLD

23334

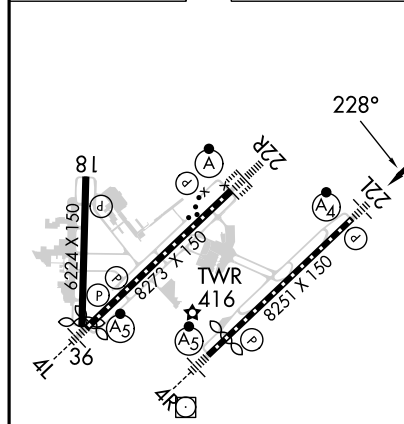
LOC/DME I-BWY	APP CRS	Rwy Idg	7200
110.7	228°	TDZE	260
Chan 44		Apt Elev	266

ILS or LOC RWY 22L
BILL AND HILLARY CLINTON NTL/ADAMS FLD (LIT)

DME or RADAR required.		MALSF	MISSED APPROACH: Climb to 800 then climbing left turn to 3000 on heading 170° and LIT VORTAC R-230 to BAUDE INT/LIT 18.4 DME and hold.	
Simultaneous approach authorized.				
D-ATIS	LITTLE ROCK APP CON	ADAMS TOWER	GND CON	CLNC DEL
125.65	135.4 353.6	118.7 257.8	121.9 339.8	118.95



ELEV 266 **D** TDZE 260



MIRL Rwy 18-36					
HIRL Rws 4R-22L and 4L-22R					
TDZ/CL Rws 4L, 4R, 22L and 22R					
FAF to MAP 4.6 NM					
Knots	60	90	120	150	180
Min:Sec	4:36	3:04	2:18	1:50	1:32

800 ↑	3000 hdg 170°	LIT R-230	BAUDE △	
*LOC only.				
<p>KICEG I-BWY 1.4</p> <p>*I-BWY 2.4</p> <p>JOREG I-BWY 6.1 1800 RADAR</p> <p>EGKIV I-BWY 11.5 228° 2500 RADAR</p> <p>CALAY I-BWY 13.3 228° 2500 RADAR</p> <p>GS 3.00° TCH 51</p> <p>1 NM 3.6 NM 5.4 NM 1.8 NM</p>				
CATEGORY	A	B	C	D
S-ILS 22L	510/40 250 (300-¾)			
S-LOC 22L	640/40 380 (400-¾)			
◼ CIRCLING	820-1 554 (600-1)	1000-1 734 (800-1)	1180-2¾ 914 (1000-2¾)	1180-3 914 (1000-3)

LITTLE ROCK, ARKANSAS

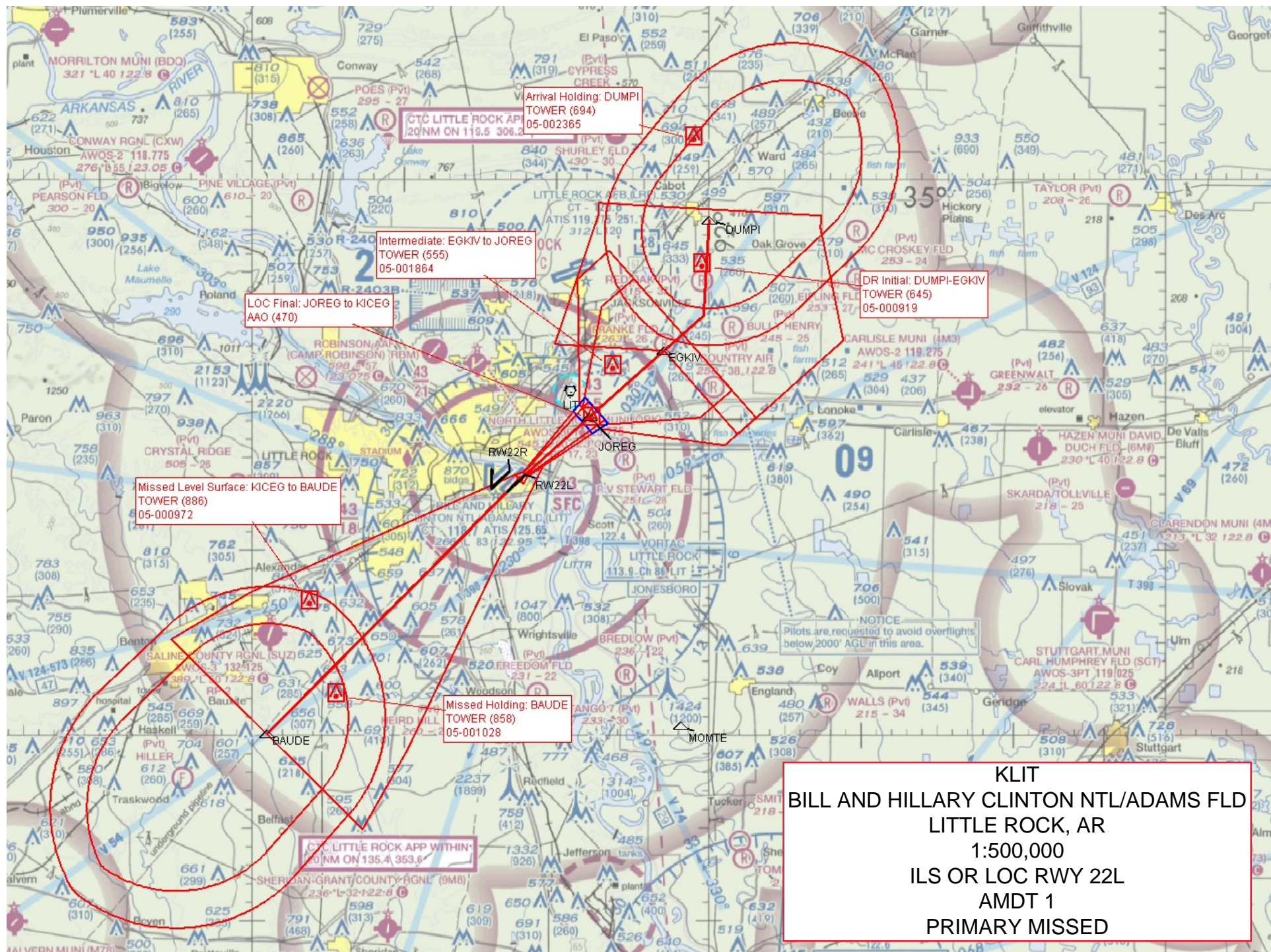
Orig-F 16JUL20

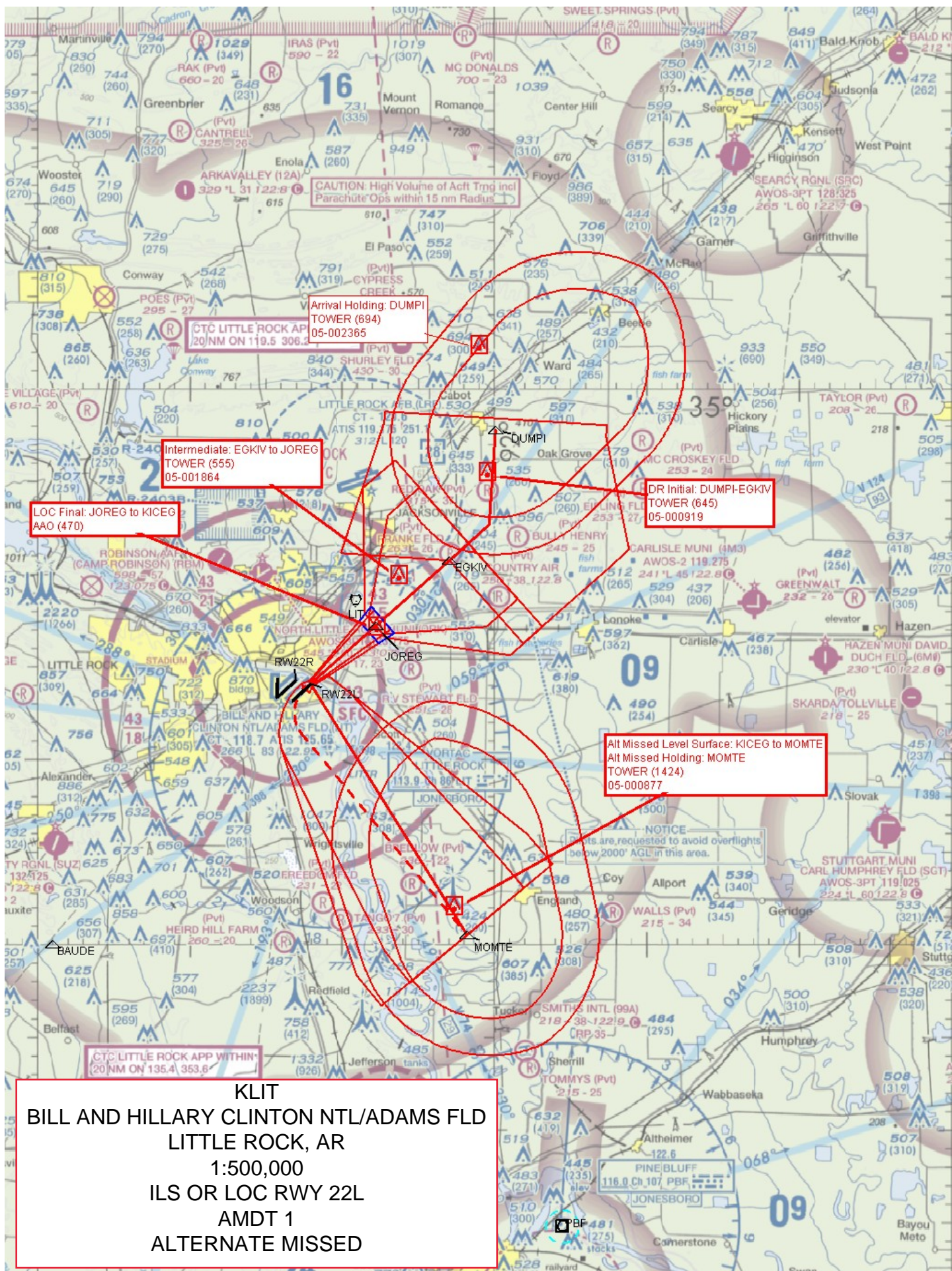
BILL AND HILLARY CLINTON NTL/ADAMS FLD (LIT)

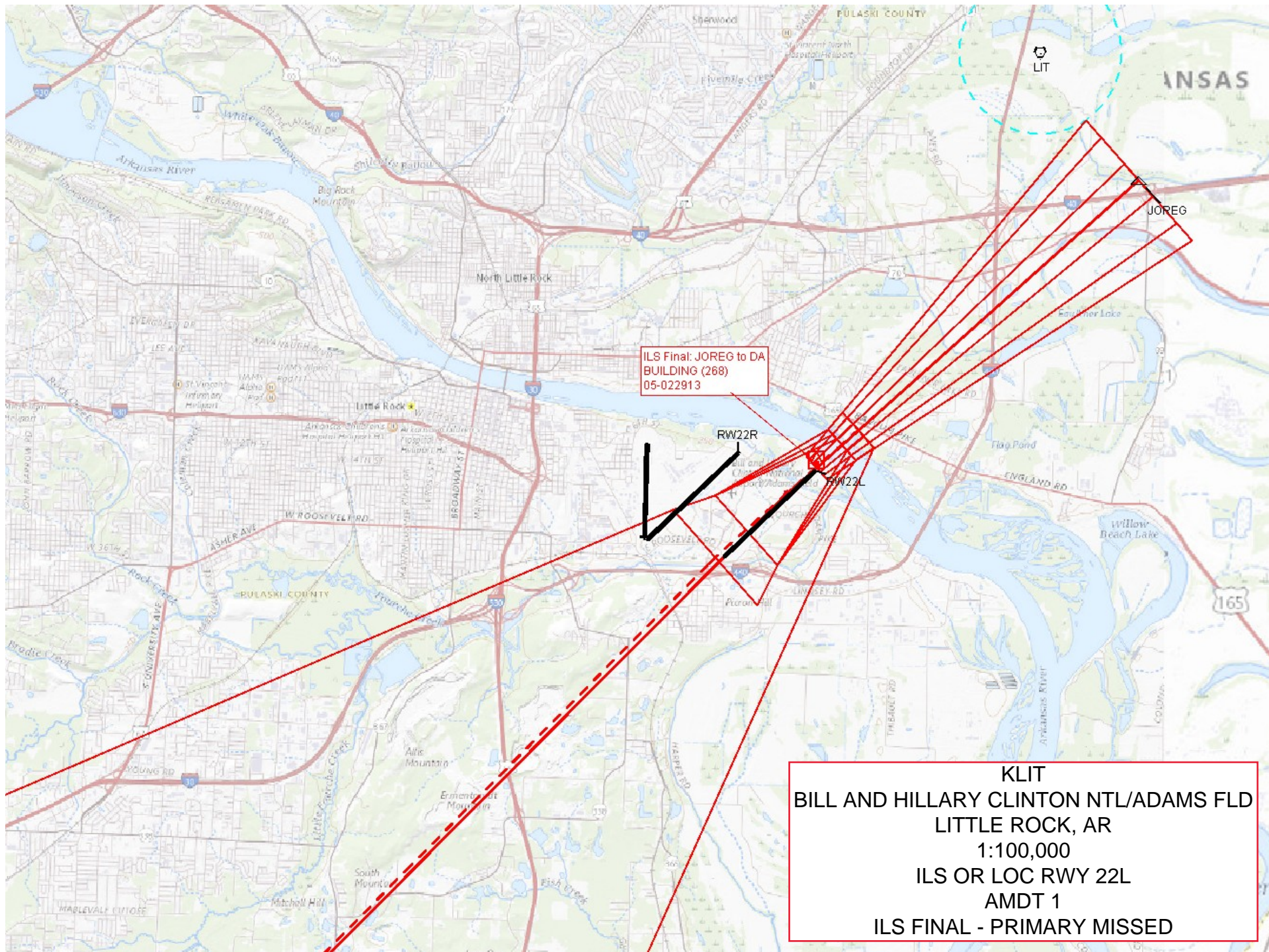
34°44'N-92°13'W

ILS or LOC RWY 22L

SC-1, 21 MAR 2024 to 18 APR 2024

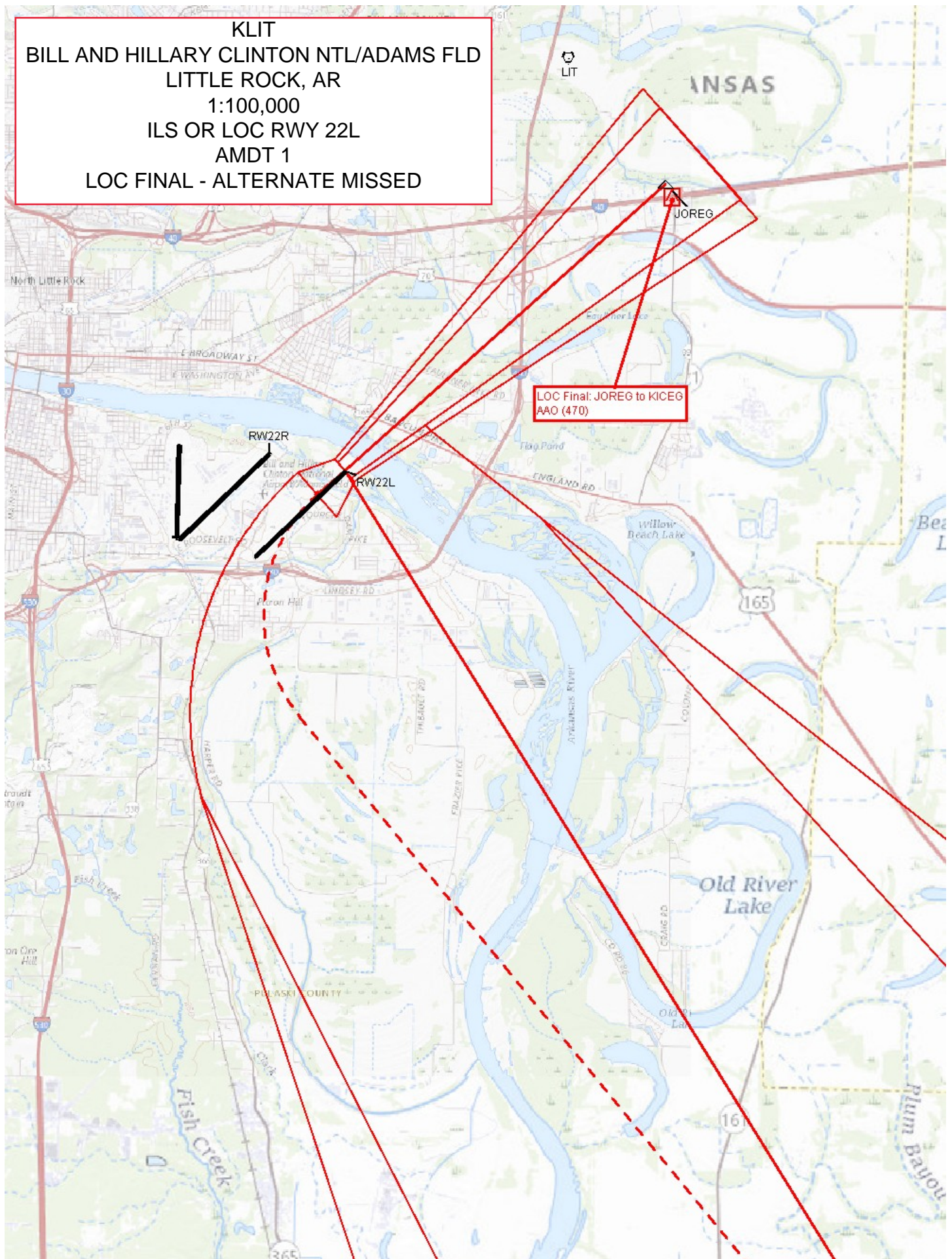






[illegible]

KLIT
BILL AND HILLARY CLINTON NTL/ADAMS FLD
LITTLE ROCK, AR
1:100,000
ILS OR LOC RWY 22L
AMDT 1
LOC FINAL - ALTERNATE MISSED



KLIT
BILL AND HILLARY CLINTON NTL/ADAMS FLD
LITTLE ROCK, AR
1:100,000
ILS OR LOC RWY 22L
AMDT 1
LOC FINAL - SLOJD FIX MINIMUMS

LOC:WP52006 to FTP27042 TRANSMISSION_LINE (364)
05-077175

LOC:JOREG to WP52006 TERRAIN+AAO (456)
TP323

LOC:JOREG to WP52006 TERRAIN+AAO (456)
TP323

LOC:JOREG to WP52006 TERRAIN+AAO (456)
TP323

KLIT
BILL AND HILLARY CLINTON NTL/ADAMS FLD
LITTLE ROCK, AR
1:100,000
ILS OR LOC RWY 22L
AMDT 1
LOC FINAL - SLOJD FIX MINIMUMS

LOC:WP52006 to FTP27042 TRANSMISSION_LINE (364)
05-077175

LOC:JOREG to WP52006 TERRAIN+AAO (456)
TP323

SLOJD

JOREG

IRUR

HAOPER RD

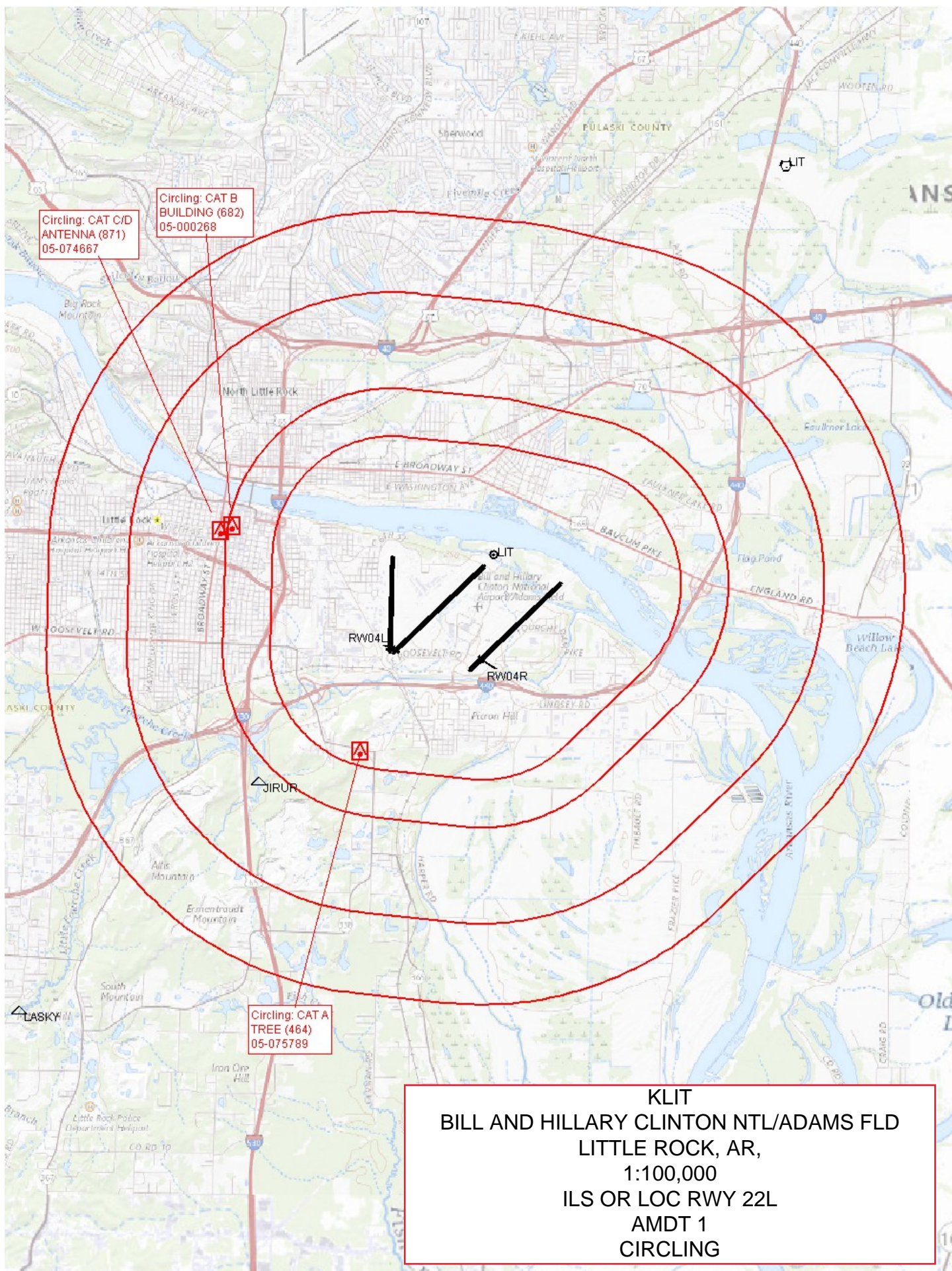
KLIT
BILL AND HILLARY CLINTON NTL/ADAMS FLD
LITTLE ROCK, AR
1:100,000
ILS OR LOC RWY 22L
AMDT 1
LOC FINAL - SLOJD FIX MINIMUMS

LOC:WP52006 to FTP27042 TRANSMISSION_LINE (364)
05-077175

LOC:JOREG to WP52006 TERRAIN+AAO (456)
TP323

LOC:JOREG to WP52006 TERRAIN+AAO (456)
TP323

LOC:WP52006 to FTP27042 TRANSMISSION_LINE (364)
05-077175



Approved ESVs Reports

REGION-SW

IDENT - AAY	City - LITTLE FREQUENCY FACILITY - ROCK - M110.3 LOC					
ESV ID	Radial 1	Radial 2	Distance	Alt Min	Alt Max	Flight Check Date
FAA 759131-003	47		19	20	47	12/31/1997
Requirement	190220EAJV-A410 GRANDFATHERED:DUMPI ILS OR LOC RWY 22R KLIT 190221 APPROVED. FREQ. PROTECTION & FIELD STRENGTH. PENDING FLIGHT INS FC BY STEVEN FRAZIER VN058 N77 ON 06/27/2007.					

REGION-SW

IDENT - AAY	City - LITTLE FREQUENCY FACILITY - ROCK - M1001 DME					
ESV ID	Radial 1	Radial 2	Distance	Alt Min	Alt Max	Flight Check Date
FAA 971582-002	47		19	20	47	12/31/1997
Requirement	190220EAJV-A410 GRANDFATHERED: DUMPI ILS OR LOC RWY 22R KLIT 190221 APPROVED. FREQ. PROTECTION & FIELD STRENGTH. PENDING FLIGHT INS FC BY STEVEN FRAZIER VN058 N77 ON 06/27/2007.					

Coordinate with Rebecca Gurney to cancel on publication date.