



Flight Procedures Cover Page	Task Action: FLIGHT CHECK	Task Type: IAP	Estimated Chart Date: 05/21/2020	APWS Task ID: 79D9B5FD727E48678781DC31E7E84B89	APWS Request ID: E5CF94407170405EB6D39F79F37700C8
Procedure: RNAV (GPS) RWY 13L AMDT 1		Enroute: NO	Specialist: Brandenburg, Phillip		Agreement Number:
Airport ID: KCIC	Airport Name: CHICO MUNI		Airport City: CHICO		State: CA
Facility ID:	Facility Type:	Flight Inspection Remark Type: New FC Slot			
<div> <div> Procedure Comments:  FULL AMDT.  ACTIVE DATA USED FOR KCIC, MVAR 1990/E16.  CONTACT ALLAN WILL 4059546103. </div> <div>   </div> </div>					

<b>FIPC BASIC FORM</b>						
<b>PROCEDURE:</b> RNAV (GPS) RWY 13L AMDT 1			<b>AIRPORT NAME:</b> CHICO MUNI		<b>AIRPORT ID:</b> KCIC	<b>SPECIAL CONTROL NO:</b> SG-02-295-20
<b>FAC ID:</b> KCIC13L.01		<b>CITY:</b> CHICO			<b>ST:</b> CA	<b>ORIG CHART DATE:</b> 05/21/2020
<b>DFL TYPE:</b> PROC/S	<b>THIRD PARTY:</b> <input type="checkbox"/> YES	<b>EST. TIME ON SITE:</b> 0.4	<b>REIMB. NUMBER:</b>	<b>PTS TASK ID:</b>		
<b>PREFLIGHT NOTES</b>						
<b>REVIEWER:</b>					<b>DATE:</b>	
<b>COMMENTS:</b>					<b>CHECK ONE:</b> <input type="checkbox"/> FLT CK REQ <input type="checkbox"/> NFCR <input type="checkbox"/> REJECT	
						<b>YES</b>
					<b>CPV COMPLETE?</b> <input checked="" type="checkbox"/> X <input type="checkbox"/> NO	
<b>PROCEDURE RESULTS</b>						
<b>INSPECTION DATE:</b> 03/20/2020	<b>CREW #:</b> VN235	<b>N #:</b> N84	<b>INSTRUMENT PROCEDURE STATUS:</b> <input checked="" type="checkbox"/> SAT <input type="checkbox"/> SAT W/CHANGES <input type="checkbox"/> UNSAT		<b>ARINC CODING:</b> <input type="checkbox"/> SAT <input checked="" type="checkbox"/> SAT/GOLD <input type="checkbox"/> UNSAT	
<b>FLIGHT INSPECTOR SIGNATURE:</b> thomas e molokie @ 03/20/2020 15:34			<b>PRINTED NAME:</b> MOLOKIE, THOMAS EDWARD			<b>NOTAM INITIATED?</b> <input type="checkbox"/> YES <input checked="" type="checkbox"/> NO
<b>FLIGHT INSPECTOR REMARKS:</b> Flown satisfactory as submitted.						
<b>IN-FLIGHT OBSTACLE REPORT</b>						
<b>OBSTRUCTION ID #:</b>	<b>COORDINATES OR LOCATION:</b>	<b>GNSS ALTITUDE (MSL):</b>	<b>BAROMETRIC ALTITUDE (MSL):</b>	<b>HEIGHT ABOVE GROUND LEVEL:</b>		

WAAS CH <b>65912</b> <b>W13A</b>	APP CRS <b>131°</b>	Rwy Idg TDZE <b>240</b> Apt Elev <b>240</b>
--	------------------------	---

RNAV (GPS) RWY 13L

CHICO MUNI (CIC)

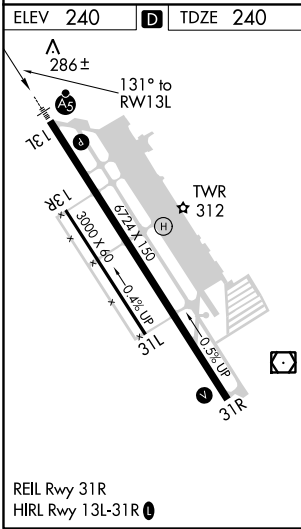
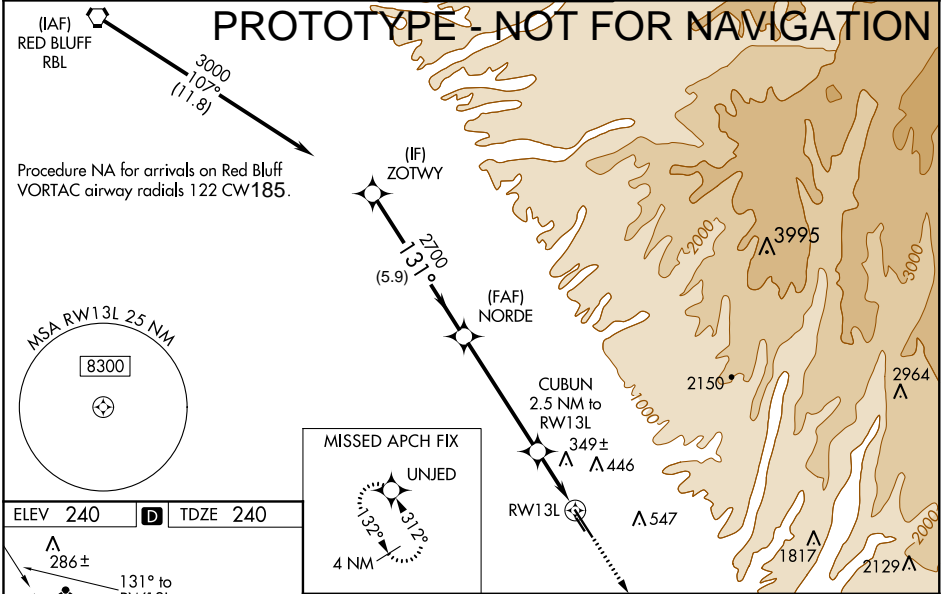
RNP APCH

**⚠** Circling NA east of Rwy 13L/31R.  
**⚠** For uncompensated Baro-VNAV systems, LNAV/VNAV NA below -15°C or above 54°C  
FOR INOPERATIVE ALS, INCREASE LNAV/VNAV ALL CATS VISIBILITY TO 7/8 SM, AND INCREASE LNAV CATS C/D VISIBILITY TO 1 SM.

MALSR

MISSED APPROACH: Climb to 3600 direct UNJED and hold, continue climb-in-hold to 3600.

ATIS <b>119.675</b>	OAKLAND CENTER <b>132.2 350.3</b>	CHICO TOWER ★ <b>121.0 (CTAF) 239.3</b>	GND CON <b>121.9</b>	UNICOM <b>122.95</b>
------------------------	--------------------------------------	--	-------------------------	-------------------------



ZOTWY		NORDE		3600	UNJED
3000		2700		CUBUN 2.5 NM to RWY 13L	
Procedure Turn NA		131°		*1080	
GP 3.00°		2700		*0.96 NM TO RWY 13L	
TCH 52		5.9 NM		1.5 NM	
CATEGORY		A	B	C	D
LPV DA	440-1/2 200 (200-1/2)				
LNAV/VNAV DA	530-1/2 290 (300-1/2)				
LNAV MDA	600-1/2 360 (400-1/2)		600-5/8 360 (400-5/8)		
CIRCLING	640-1 400 (500-1)	700-1 460 (500-1)	700-1 1/2 460 (500-1 1/2)	800-2 560 (600-2)	

OLD

RNAV (GPS) RWY 13L  
CHICO MUNI (CIC)

WAAS CH <b>65912</b> <b>W13A</b>	APP CRS <b>131°</b>	Rwy Idg <b>6724</b> TDZE <b>240</b> Apt Elev <b>240</b>
--	------------------------	---

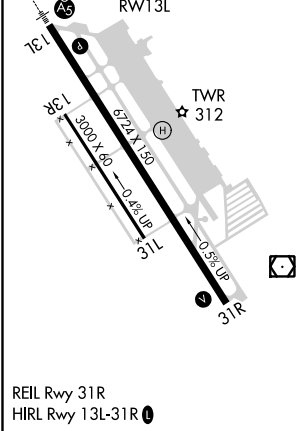
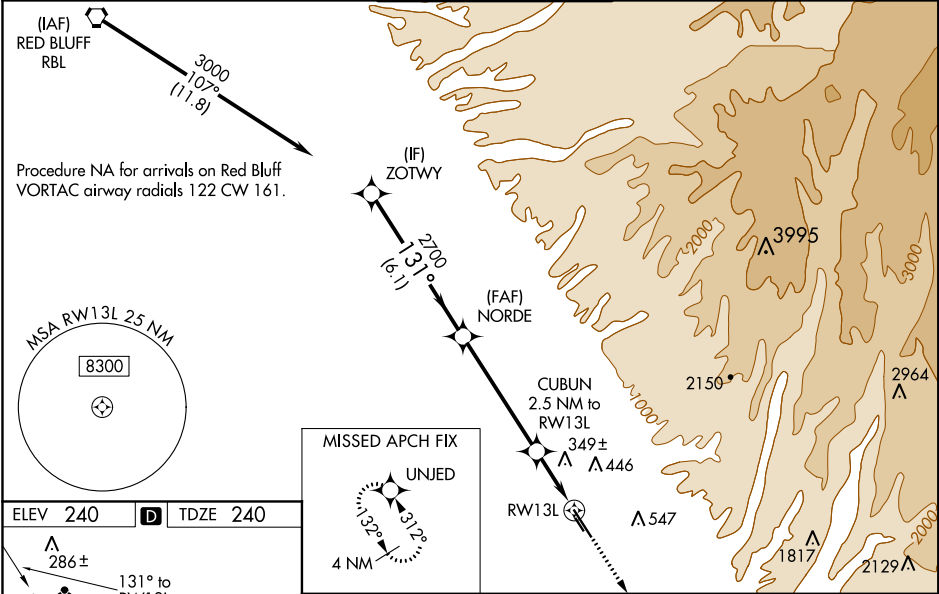
**NA**

Inoperative table does not apply to LPV and LNAV Cats A/B/C.  
For inoperative MALSR, increase LNAV Cat D visibility to 1 1/4.  
Circling NA east of Rwy 13L/31R. Baro-VNAV NA when using Red Bluff altimeter setting. For uncompensated Baro-VNAV systems, LNAV/VNAV NA below -15°C (5°F) or above 49°C (120°F). DME/DME RNP-0.3 NA. Visibility reduction by helicopters NA. When local altimeter setting not received, use Red Bluff Muni altimeter setting and increase all DA 81 feet, and all MDA 100 feet, increase LNAV/VNAV all Cats visibility 1/4 mile. For inoperative MALSR when using Red Bluff altimeter setting, LNAV Cats A/B inoperative table does not apply, increase Cat C visibility 1/4 mile.

MALSR

MISSED APPROACH: Climb to 3600 direct UNJED and hold, continue climb-in-hold to 3600.

ATIS <b>119.675</b>	OAKLAND CENTER <b>132.2 350.3</b>	CHICO TOWER ★ <b>121.0 (CTAF) 239.3</b>	GND CON <b>121.9</b>	UNICOM <b>122.95</b>
------------------------	--------------------------------------	--	-------------------------	-------------------------

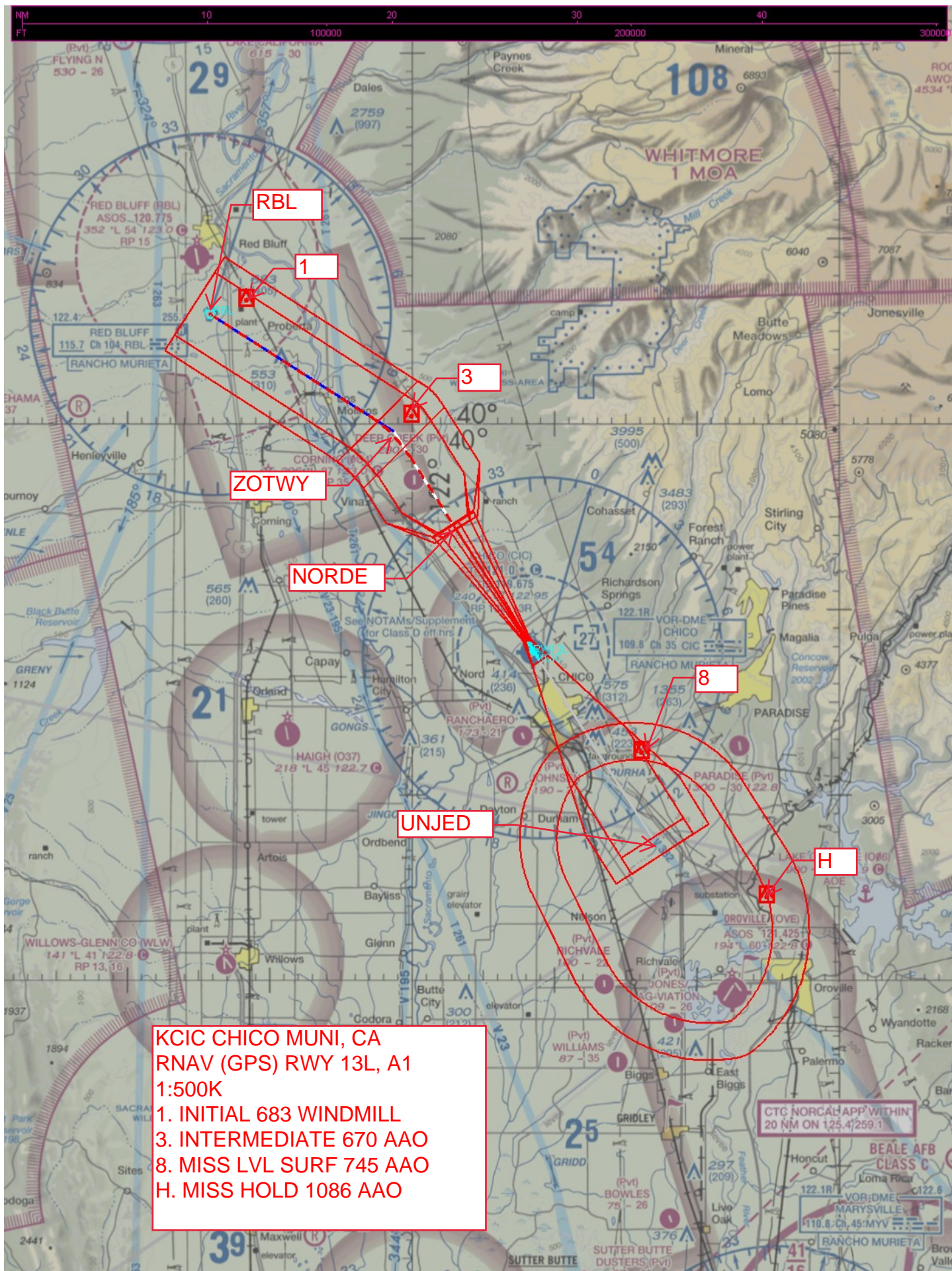


ZOTWY		NORDE		3600	UNJED
3000		2700		CUBUN 2.5 NM to RWY 13L	
Procedure Turn NA		131°		*UNAV only	
GP 3.00°		2700		RWY 13L	
TCH 52		6.1 NM		*1080	
		4.9 NM		2.5 NM	
CATEGORY	A	B	C	D	
LPV DA	536-1		296 (300-1)		
LNAV/ VNAV DA	648-1		408 (500-1)		
LNAV MDA	600-1		360 (400-1)		
CIRCLING	640-1 400 (500-1)	700-1 460 (500-1)	700-1 1/2 460 (500-1 1/2)	800-2 560 (600-2)	

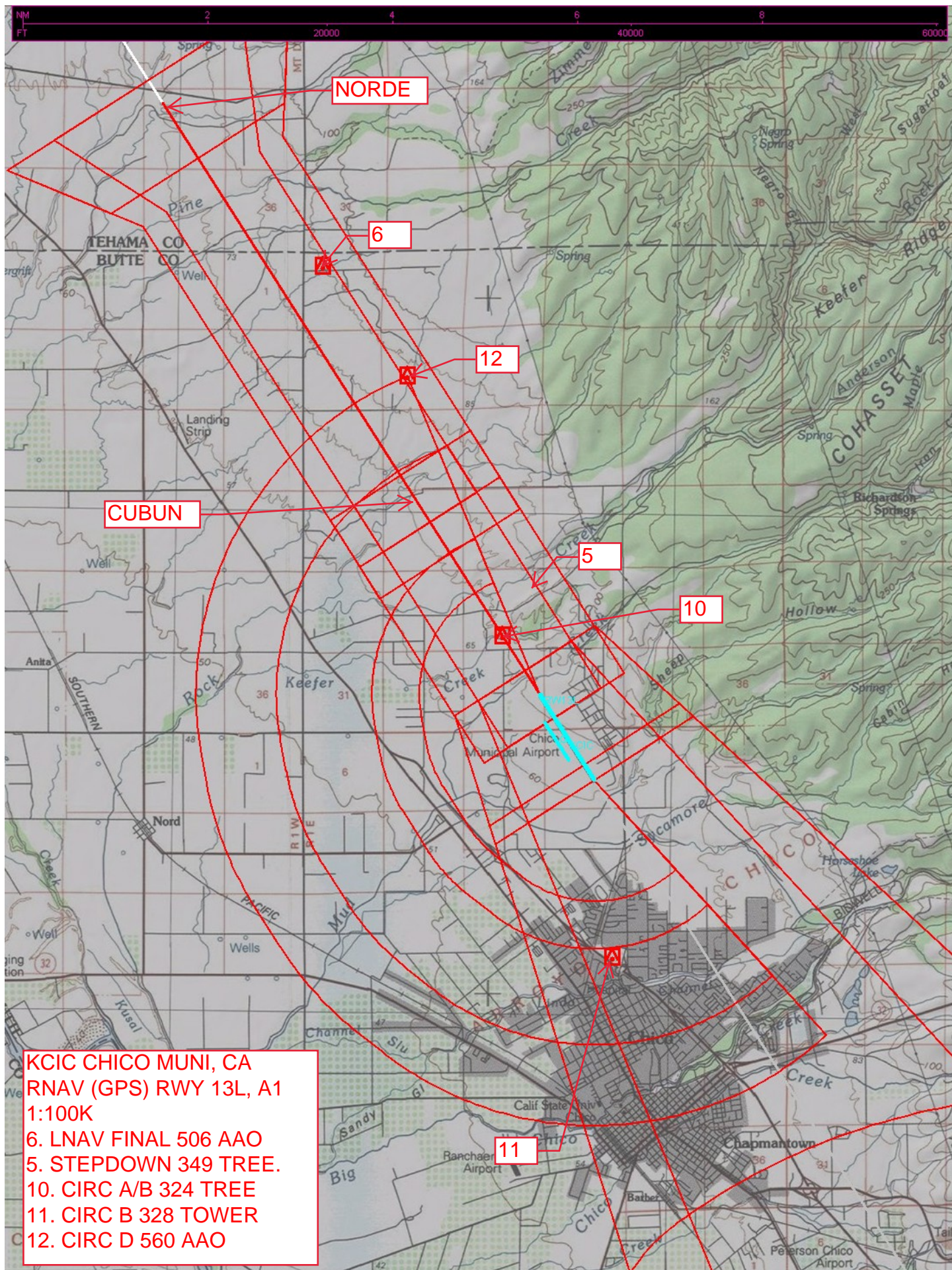
SW-2, 30 JAN 2020 to 27 FEB 2020

SW-2, 30 JAN 2020 to 27 FEB 2020

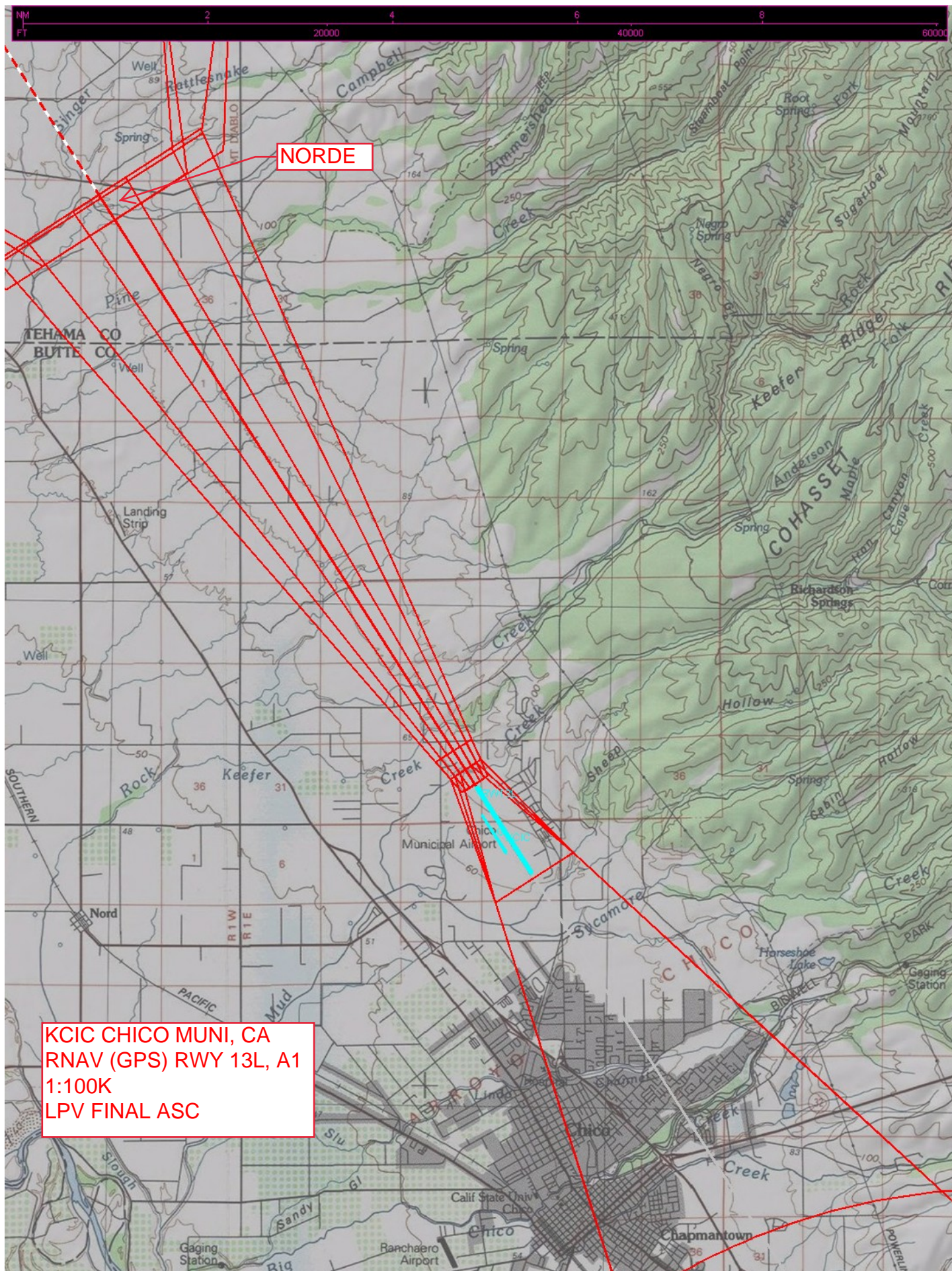




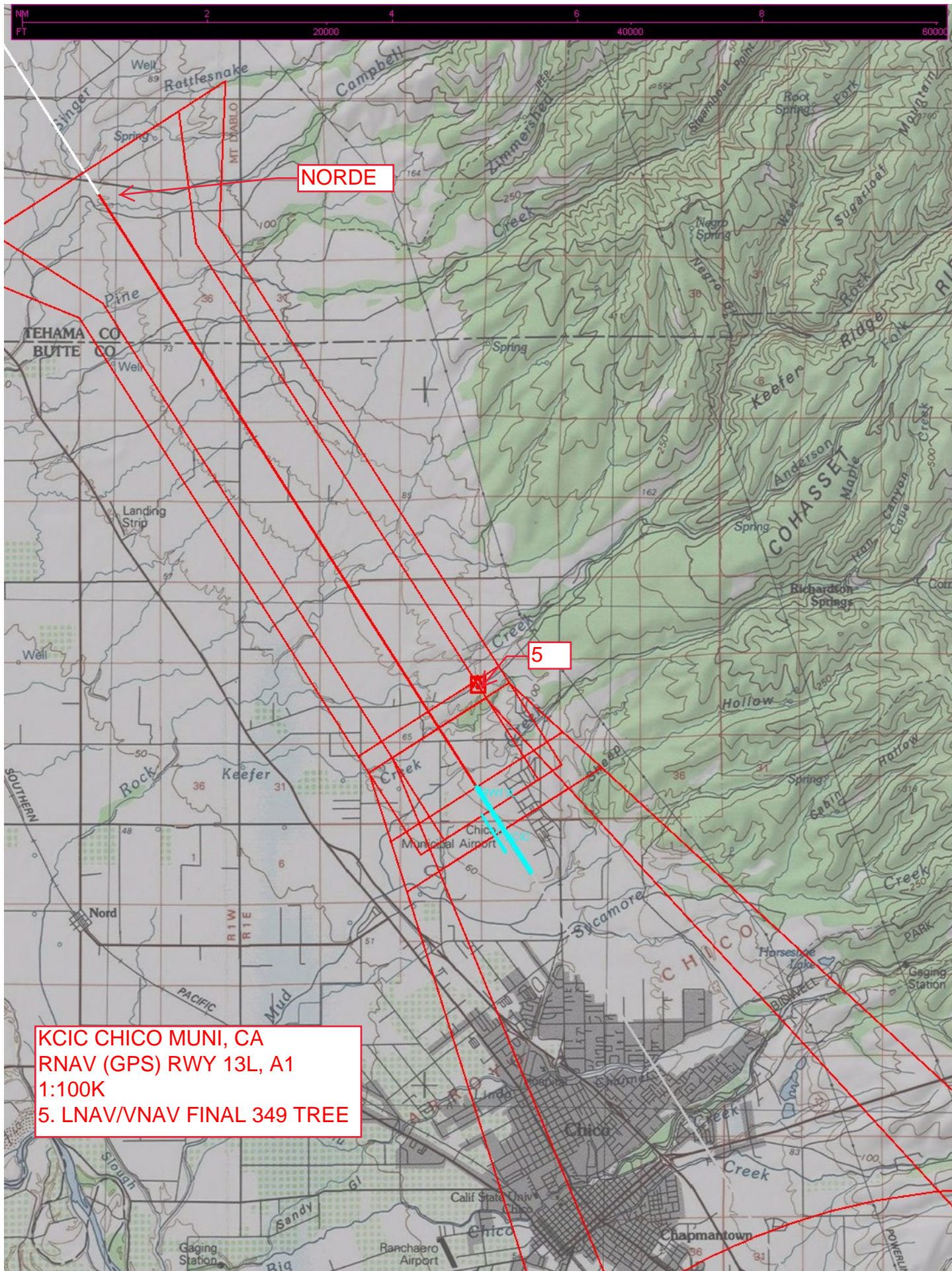












KCIC CHICO MUNI, CA  
RNAV (GPS) RWY 13L, A1  
1:100K  
5. LNAV/VNAV FINAL 349 TREE



