



Flight Procedures Cover Page	Task Action: Amendment	Task Type: IAP	Estimated Chart Date: 08/13/2020	APWS Task ID: 79C6AA293CB74046A8ABB8A631DBE981	APWS Request ID: 747FD25FC5774687B13A82307488F36F
Procedure: RNAV (GPS) Y RWY 22 AMDT 0E		Enroute: NO	Specialist: Miller, Ralph		Agreement Number:
Airport ID: KELP	Airport Name: EL PASO INTL		Airport City: EL PASO		State: TX
Facility ID:	Facility Type:	Flight Inspection Remark Type:			
<div> <div> Procedure Comments: P-NOTAM CIRCLING ICON PROCESSED IAW AIRCRAFT OPERATIONS GROUP (AJW-33) MEMO, OCTOBER 3, 2018, SUBJECT: FLIGHT INSPECTION REVIEW NOT REQUIRED ACTIVE DATA USED. CONTACT DAVID DANNER, AJV-A421, (405)-954-5077 </div> <div>  6/3/20 J. DuBois </div> </div> <div>  </div>					

APP CRS
222°

Rwy Idg
TDZE
3949
Apt Elev
3962

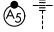
OLD

RNAV (GPS) Y RWY 22
EL PASO INTL (ELP)

T
ASR

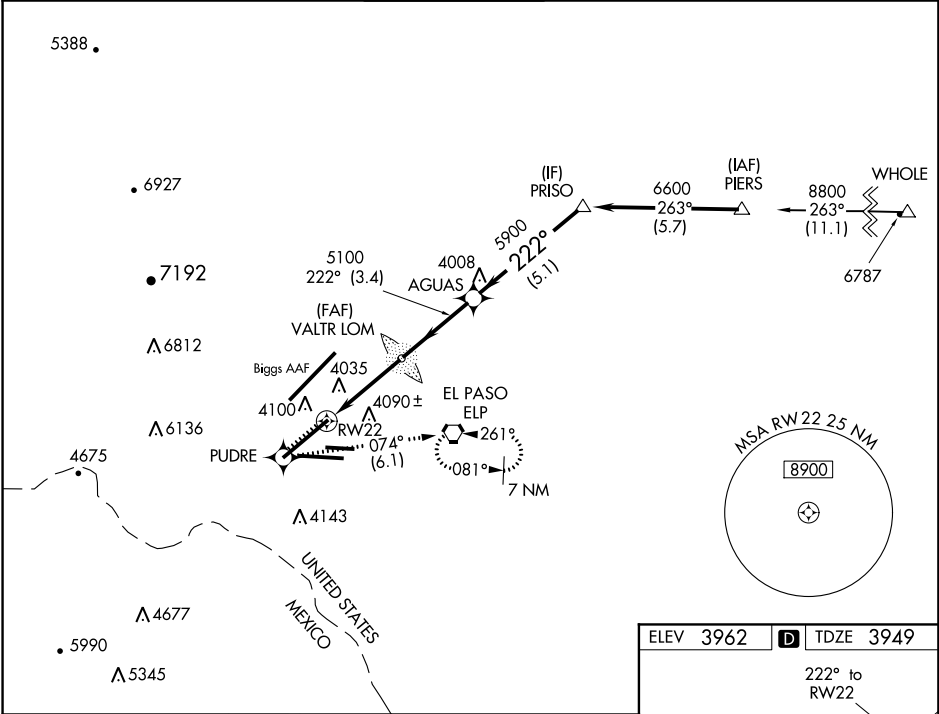
For uncompensated Baro-VNAV systems, LNAV/VNAV NA below -9°C (16°F) or above 50°C (122°F). DME/DME RNP-0.3 NA. For inop MALSRs increase LNAV/VNAV Cat D visibility to RVR 5000 and LNAV Cat D visibility to RVR 6000.

MALSR



MISSED APPROACH: Climb to 4600 direct PUDRE and climbing left turn to 6900 on track 074° to ELP VORTAC and hold.

D-ATIS 120.0 254.3	EL PASO APP CON 124.25 298.85	EL PASO TOWER 118.3 239.275	GND CON 121.9 348.6	CLNC DEL 125.0 379.1
------------------------------	---	---------------------------------------	-------------------------------	--------------------------------



4600
↑

PUDRE
✱

6900
tr
074°

ELP
⬠

VGSI and RNAV glidepath not coincident (VGSI Angle 3.00/TCH 70).

* LNAV only

RW22

5100

5100

5900

6600

0.9

2.5 NM

3.4 NM

5.1 NM

CATEGORY	A	B	C	D
LNAV/VNAV DA	4273/24	324 (400-½)	4273/40	324 (400-¾)
LNAV MDA	4300/24	351 (400-½)	4300/50	351 (400-1)
CIRCLING	4420-1	458 (500-1)	4420-1½	4520-2

ELEV 3962

D

TDZE 3949

222° to RW22

12020 X 150

9025 X 150

5499 X 75

26L 26R

TWR 4105

MIRL Rwy 8L-26R

REIL Rwy 4 and 8R

HIRL Rwy 4-22 and 8R-26L

