



23026

TAKEOFF MINIMUMS, (OBSTACLE) DEPARTURE PROCEDURES, AND DIVERSE VECTOR AREA (RADAR VECTORS)



DAVENPORT, IA

DAVENPORT MUNI (DVN)

TAKEOFF MINIMUMS AND (OBSTACLE) DEPARTURE PROCEDURES

AMDT 2 10MAR11 (11069) (FAA)

DEPARTURE PROCEDURE:

Rwy 15, climb heading 149° to 2400 before turning left.**Rwy 21**, climb heading 209° to 1400 before turning left.

TAKEOFF OBSTACLE NOTES:

Rwy 3, vehicles on roadway, rising terrain and trees beginning 19' from DER, 58' left of centerline, up to 65' AGL/810' MSL.

Vehicles on roadway, rising terrain and trees beginning 536' from DER, 32' right of centerline, up to 36' AGL/777' MSL.

Rwy 15, rising terrain and trees beginning 54' from DER, 49' left of centerline, up to 100' AGL/849' MSL.

Rising terrain and trees beginning 85' from DER, 62' right of centerline, up to 79' AGL/810' MSL.

Rwy 21, rising terrain and trees beginning 53' from DER, left and right of centerline, up to 43' AGL/784' MSL.**Rwy 33**, rising terrain beginning at DER, left and right of centerline, up to 784' MSL.

DECORAH, IA

DECORAH MUNI (DEH)

TAKEOFF MINIMUMS AND (OBSTACLE) DEPARTURE PROCEDURES

AMDT 2 05MAY11 (11125) (FAA)

DEPARTURE PROCEDURE:

Rwy 29, Climb heading 294° to 1600 before turning left.

TAKEOFF OBSTACLE NOTES:

Rwy 11, terrain beginning 50' from DER, 216' left of centerline, up to 1166' MSL.

Terrain beginning 23' from DER, 218' right of centerline, up to 1170' MSL.

Vehicle on road 406' left of centerline, crossing left to right, up to 15' AGL/1189' MSL.

Poles beginning 378' from DER, 28' left of centerline, up to 63' AGL/1223' MSL.

Tree 89' from DER, 337' left of centerline, 10' AGL/1170' MSL.

Trees 770' from DER, 201' left of centerline, 37' AGL/1197' MSL.

Buildings and signs 1475' from DER, 198' left of centerline, up to 49' AGL/1229' MSL.

Trees beginning 2890' from DER, 397' left of centerline, up to 100' AGL/1250' MSL.

Trees 1292' from DER, 418' right of centerline, 66' AGL/1206' MSL.

Poles and signs beginning 2058' from DER, 28' right of centerline, up to 57' AGL/1227' MSL.

Rwy 29, trees beginning 443' from DER, 485' left of centerline, up to 95' AGL/1205' MSL.

DENISON, IA

DENISON MUNI (DNS)

TAKEOFF MINIMUMS AND (OBSTACLE) DEPARTURE PROCEDURES

ORIG 25SEP08 (08269) (FAA)

TAKEOFF MINIMUMS:

Rwys 6, 18, 24, 36, NA-Environmental.

TAKEOFF OBSTACLE NOTES:

Rwy 12, trees beginning 10' from DER, 202' left of centerline, up to 100' AGL/1352' MSL.

Trees beginning 293' from DER, 190' right of centerline, up to 100' AGL/1352' MSL.

OLD

DES MOINES, IA

DES MOINES INTL (DSM)

TAKEOFF MINIMUMS AND (OBSTACLE) DEPARTURE PROCEDURES

AMDT 11A 01FEB18 (18032) (FAA)

DEPARTURE PROCEDURE:

Rwy 5, climb heading 053° to 1500 before turning left.

TAKEOFF OBSTACLE NOTES:

Rwy 5, NAVAID 40' from DER, 115' left of centerline, 4' AGL/936' MSL.

Terrain 233' from DER, 503' left of centerline, 941' MSL.

Fence 623' from DER, 589' left of centerline, 8' AGL/951' MSL.

Vehicle on road 934' from DER, 669' left of centerline, 959' MSL.

Trees and pole beginning 986' from DER, 400' left of centerline, up to 1020' MSL.

Pole 2280' from DER, 364' right of centerline, 71' AGL/1001' MSL.

Tree and pole beginning 2312' from DER, 377' right of centerline, up to 1004' MSL.

Trees beginning 2341' from DER, 566' right of centerline, up to 1015' MSL.

Tree 2432' from DER, 881' right of centerline, 1018' MSL.

Trees beginning 2453' from DER, 566' right of centerline, up to 1020' MSL.

Trees beginning 2609' from DER, 614' right of centerline, up to 1026' MSL.

Trees beginning 3175' from DER, 218' right of centerline, up to 1048' MSL.

Tree 3567' from DER, 1042' left of centerline, 1035' MSL.

Trees beginning 3572' from DER, 37' left of centerline, up to 1038' MSL.

Rwy 13, tree 1427' from DER, 830' left of centerline, 1002' MSL.

Tree 1830' from DER, 918' right of centerline, 1017' MSL.

Tree 2970' from DER, 1142' left of centerline, 1033' MSL.

Rwy 23, vehicle on road beginning 199' from DER, 30' right of centerline, up to 930' MSL.**Rwy 31**, tree 2508' from DER, 907' right of centerline, 977' MSL.

23 FEB 2023 to 23 MAR 2023

23 FEB 2023 to 23 MAR 2023

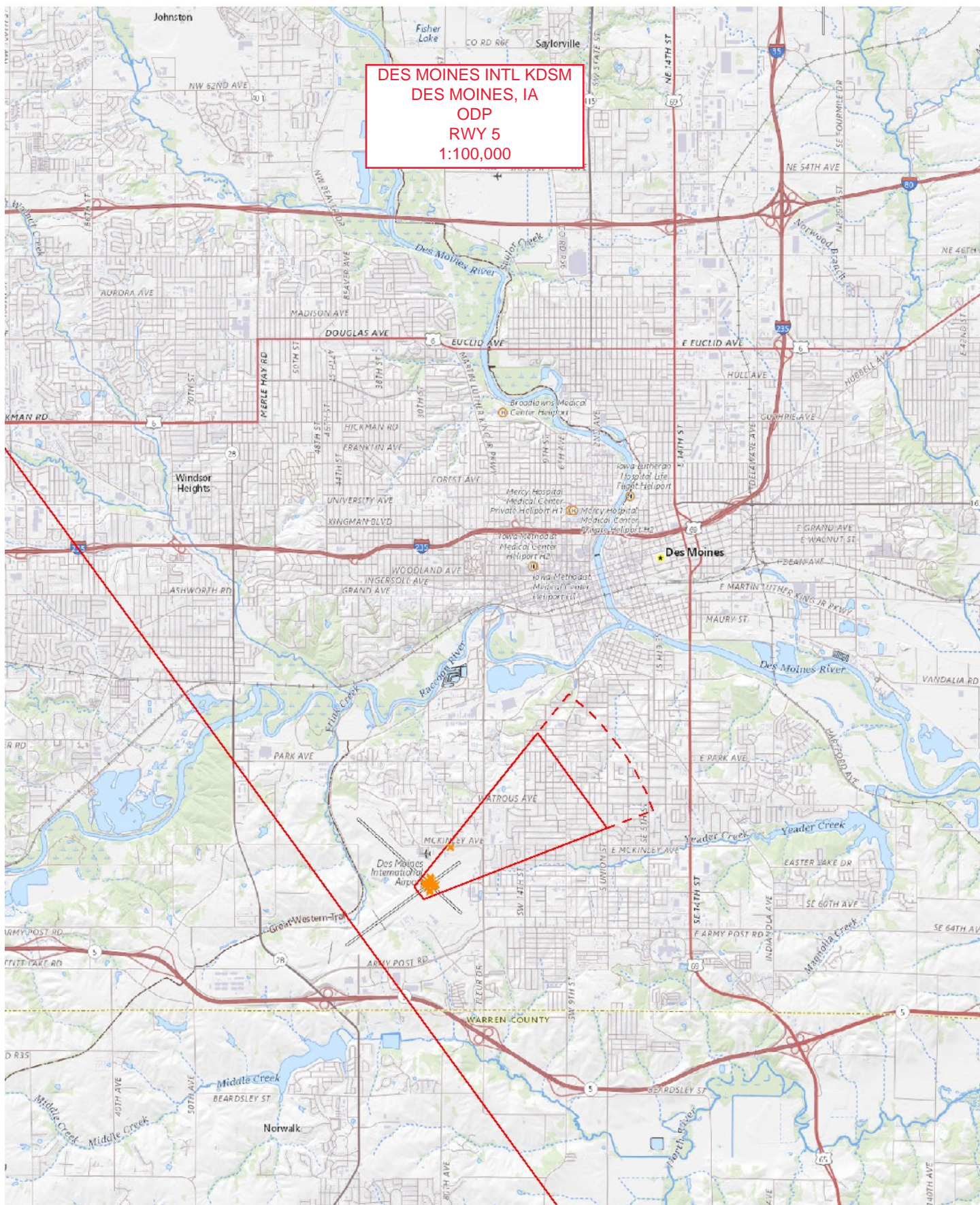


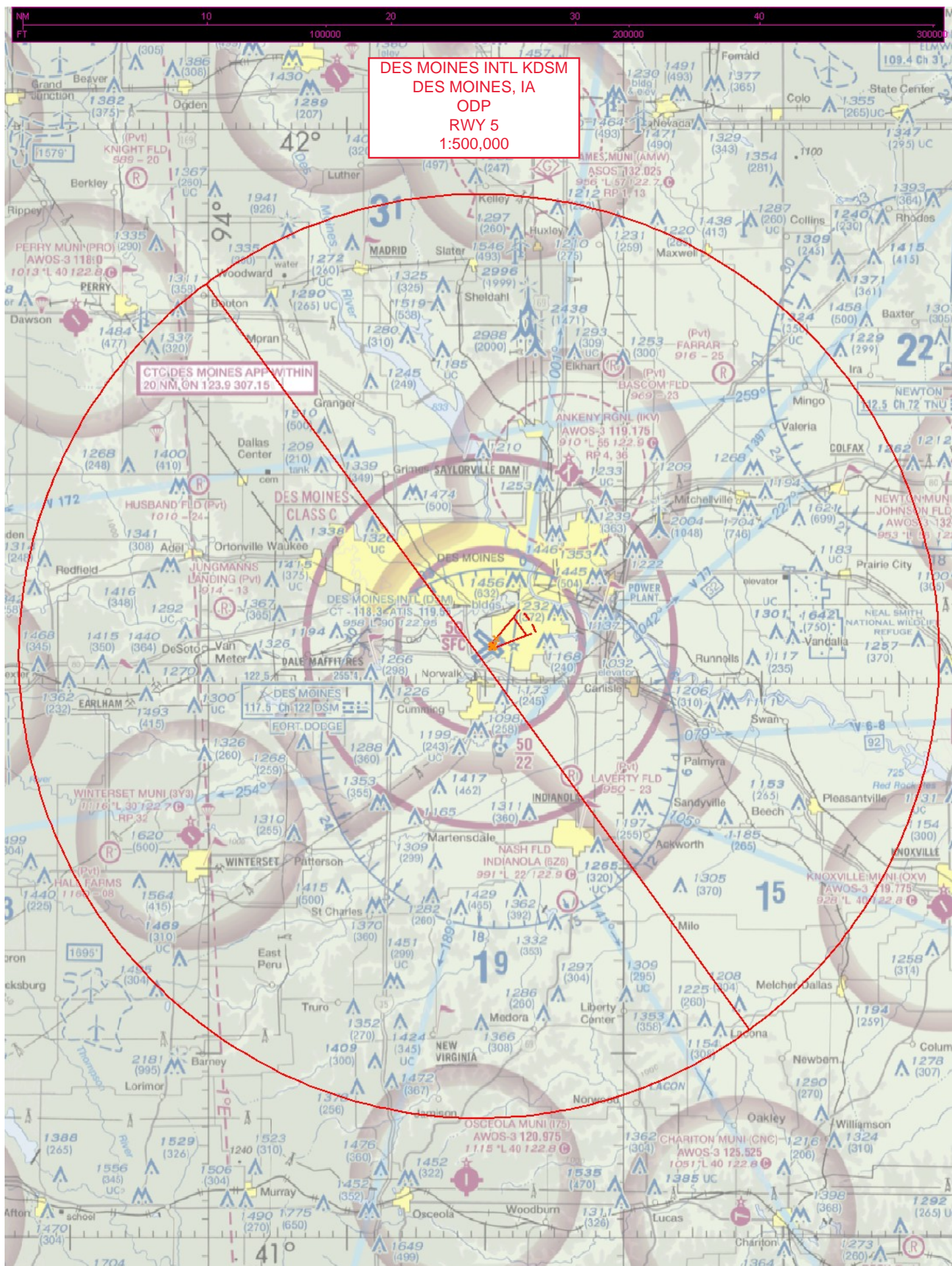
23026

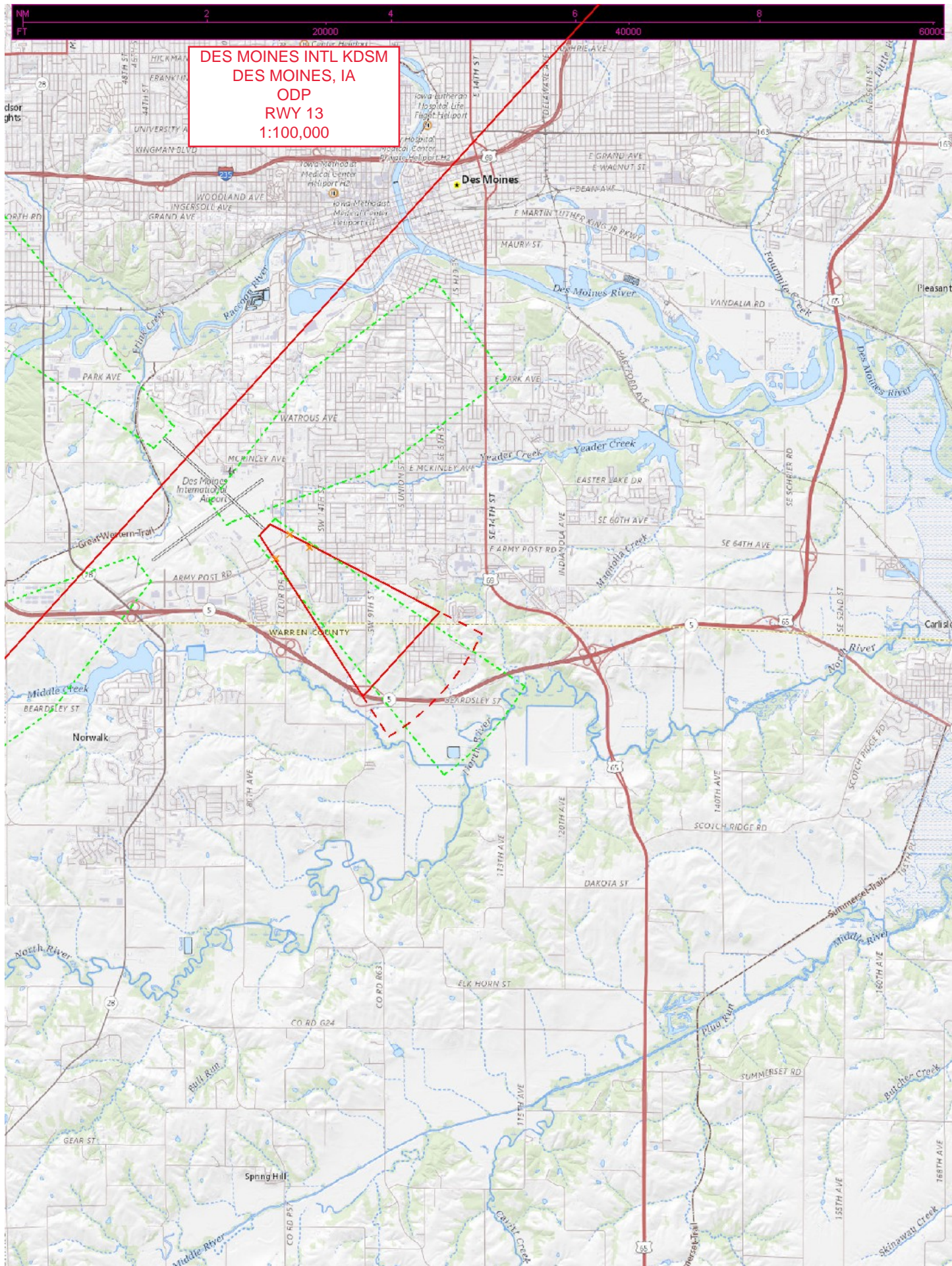
TAKEOFF MINIMUMS, (OBSTACLE) DEPARTURE PROCEDURES, AND DIVERSE VECTOR AREA (RADAR VECTORS)



NC-3



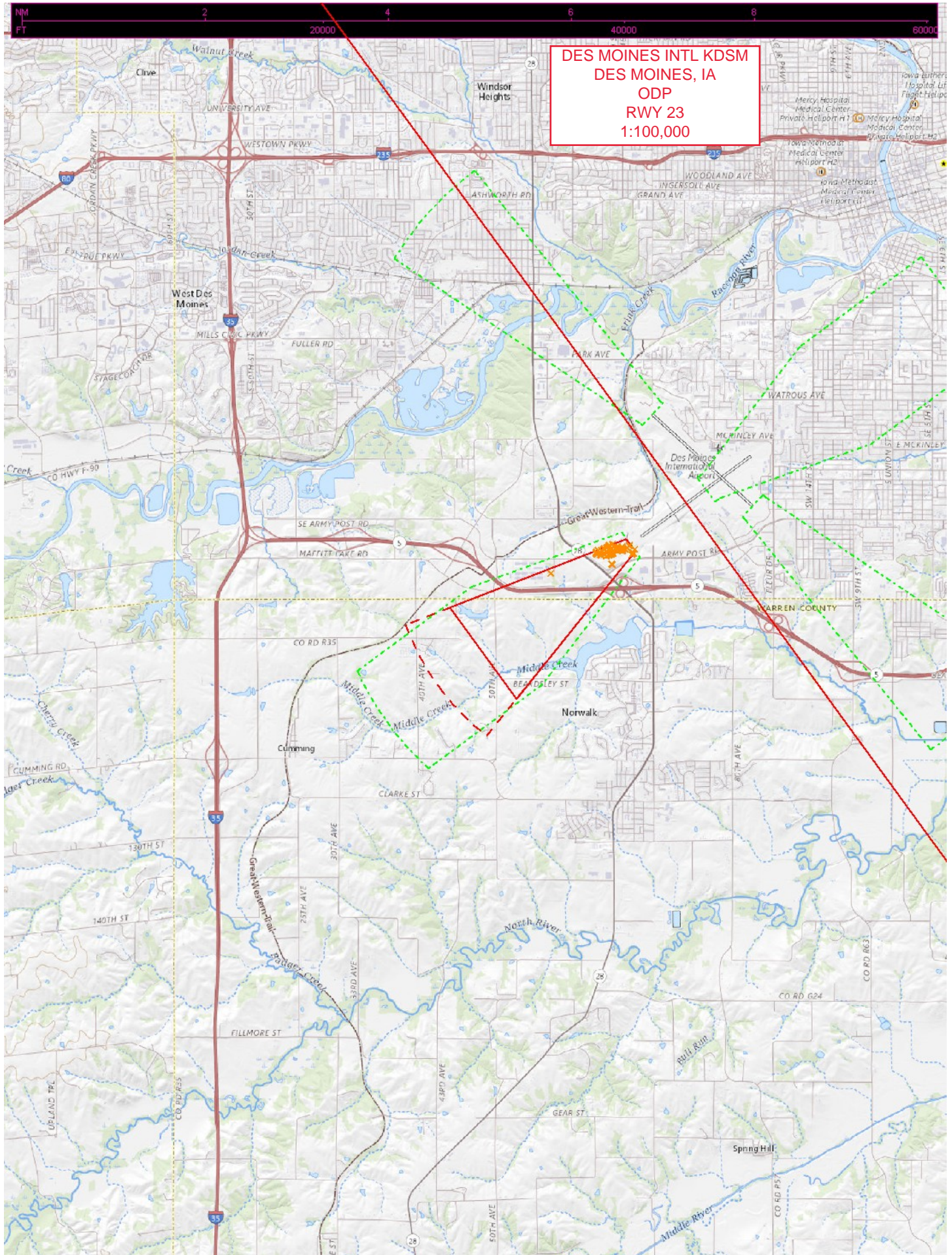




DES MOINES INTL KDSM
DES MOINES, IA
ODP
RWY 13
1:500,000

CTC DES MOINES APP WITHIN
20 NM ON 123.9 307.15

DES MOINES |
117.5 Ch 122 DSM

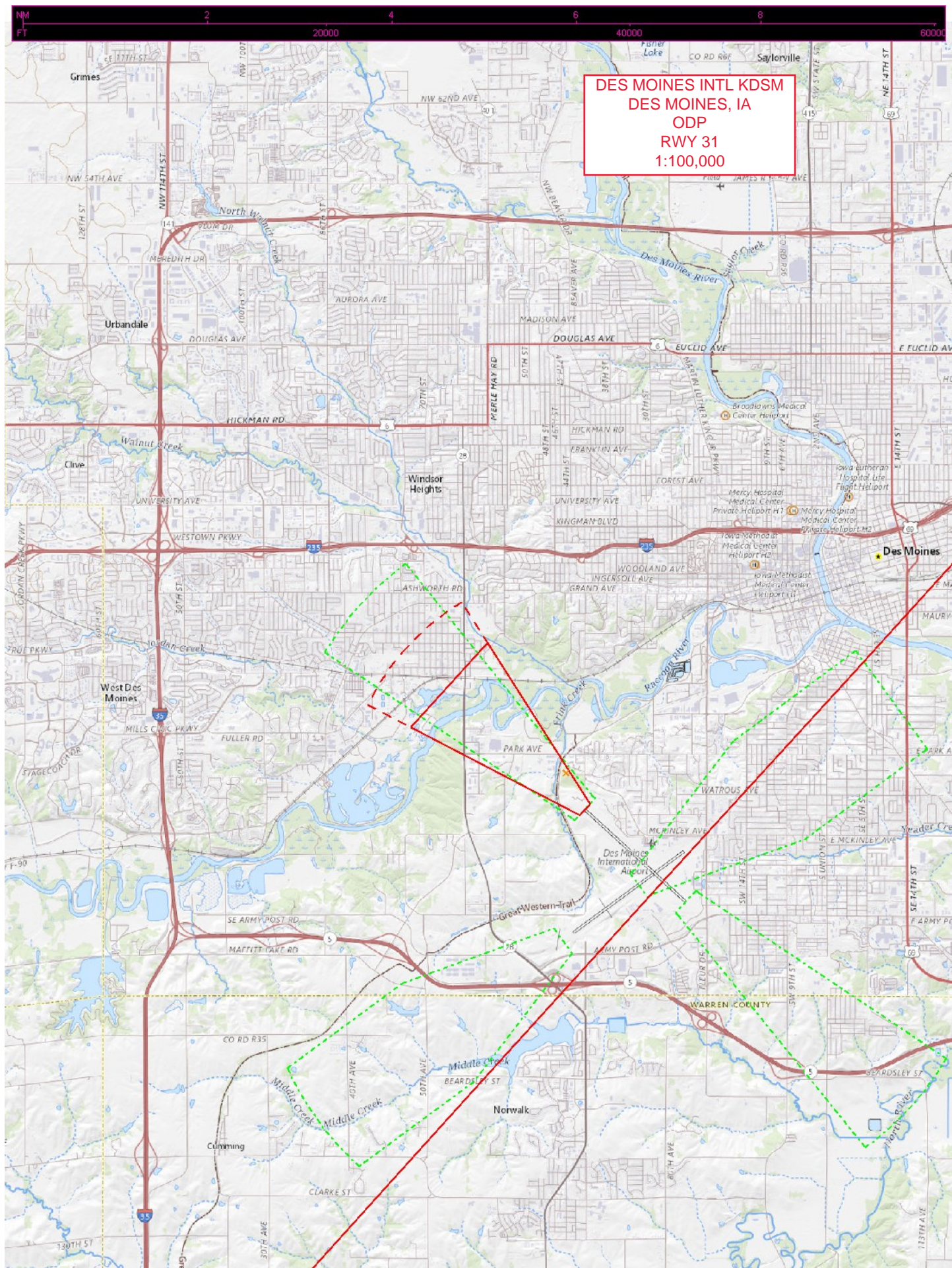




DES MOINES INTL KDSM
DES MOINES, IA
ODP
RWY 23
1:500,000

CTC DES MOINES APP WITHIN
20 NM, ON 123.9 307.15

DES MOINES I
117.5 Ch 122 DSM





DES MOINES INTL KDSM
DES MOINES, IA
ODP
RWY 31
1:500,000

CTC DES MOINES APP WITHIN
20 NM ON 123.9 307.15

DES MOINES
CLASS C

DES MOINES
117.5 Ch 122 DSM

DES MOINES INTL (KDSM)
CT - 118.3 ATIS 119.1
958 L 30 122.95

DES MOINES
117.5 Ch 122 DSM

DES MOINES
117.5 Ch 122 DSM

DES MOINES
117.5 Ch 122 DSM

DES MOINES
117.5 Ch 122 DSM

DES MOINES
117.5 Ch 122 DSM

DES MOINES
117.5 Ch 122 DSM

DES MOINES
117.5 Ch 122 DSM

DES MOINES
117.5 Ch 122 DSM

DES MOINES
117.5 Ch 122 DSM

DES MOINES
117.5 Ch 122 DSM

DES MOINES
117.5 Ch 122 DSM

DES MOINES
117.5 Ch 122 DSM