

Flight Procedures Cover Page	Task Action: Abbreviated Amendment	Task Type: IAP	Estimated Chart Date: 11/27/2025	APWS Task ID: 783018BC9C9348D6BA7662E86C70DD38	APWS Project ID: 91AF05E82D70417991C4A29ED39C8EBB
Procedure: RNAV (GPS) RWY 23 AMDT 1A		Enroute: NO	Specialist: Gorman, Barbara		Agreement Number:
Airport ID: KAZO			Airport City: KALAMAZOO		State: MI
Facility ID:	Facility Type:	Flight Inspection Remark Type:			
<div>Procedure Comments: PROCESSED IAW TECHNICAL SUPPORT GROUP (AJF-17) MEMO DATED 07/07/2021 GUIDANCE FOR PROCEDURAL CHANGES REQUIRING FLIGHT INSPECTION/VALIDATION REMOVE NOTAM FDC 5/1929. CONTACT: CASIMIR TABAKA: 405.954.7931</div> <div><div>07/21/2025</div><div>QUALITY 41 CHECKED</div><div>QUALITY 14 CHECKED</div></div>					

RNAV (GPS) RWY 23

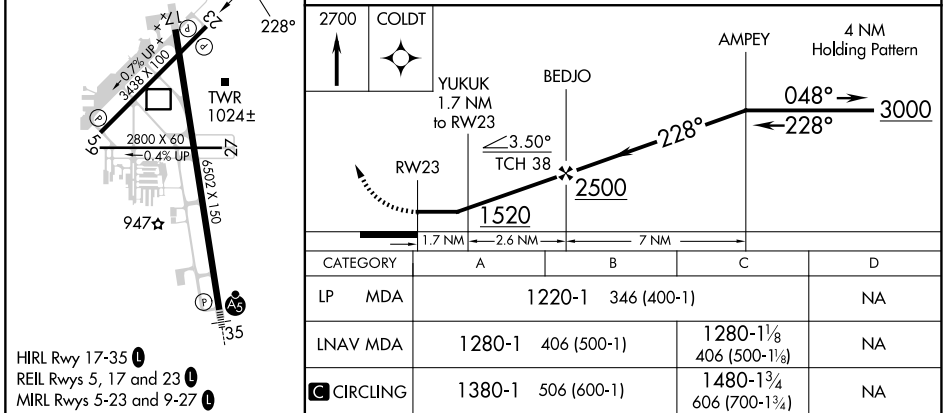
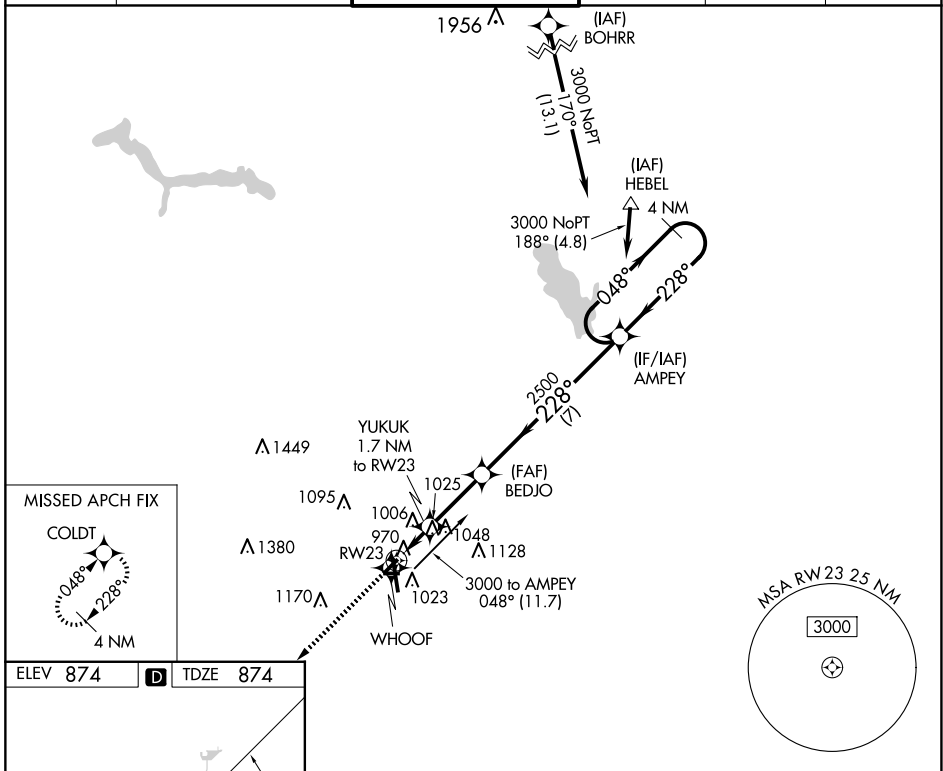
KALAMAZOO/BATTLE CREEK INTL (AZO)

RNP APCH.

T Circling Rwy 5, 9, 17, 23, 27 NA at night. Rwy 23 helicopter visibility reduction below 1 SM NA. Straight-in Rwy 23 NA at night.

MISSED APPROACH: Climb to 2700
direct COLDT and hold.

ATIS 127.25	GREAT LAKES APP CON ★ 121.2 239.25	KALAMAZOO TOWER★ 118.3 (CTAF) 0 257.875	GND CON 121.9	CLNC DEL 121.75	UNICOM 122.95
-----------------------	--	---	-------------------------	---------------------------	-------------------------



KALAMAZOO, MICHIGAN

Amdt 1 19JUL18

42°14'N-85°33'W

KALAMAZOO/BATTLE CREEK INTL (AZO)

RNAV (GPS) RWY 23

