

Flight Procedures Cover Page	Task Action: FLIGHT CHECK	Task Type: IAP	Estimated Chart Date: 08/07/2025	APWS Task ID: 782901555E11457C8C9D0E7E91BC37AC	APWS Project ID: 2B53445AEEDB4F0BB0E22DCCE71947D2
Procedure: RNAV (GPS) RWY 5 AMDT 2		Enroute: NO	Specialist: Gorman, Barbara		Agreement Number:
Airport ID: KSBY			Airport City: SALISBURY		State: MD
Facility ID:	Facility Type:	Flight Inspection Remark Type: New FC Slot			
<div>Procedure Comments: ACTIVE DATA USED FOR AIRPORT AND RUNWAY. VORMON PROJECT: SBY VOR AND SWL VOR DECOMMISSIONING CONTACT: CASIMIR TABAKA: 405-954-7931</div> <div>06/12/2025: THIS IS A CORRECTED COPY OF THE FORM APPROVED ON 04/01/2025. PROFILE LINE 4: ADDED FEYKO 2000.</div> <div>QUALITY 16 CHECKED</div> <div>QUALITY 10 CHECKED</div> <div>QUALITY 38 CHECKED</div>					

WAAS CH 62820 W05A	APP CRS 049°	Rwy Idg TDZE Apt Elev	5000 48 53
--	------------------------	-----------------------------	---------------------------------------

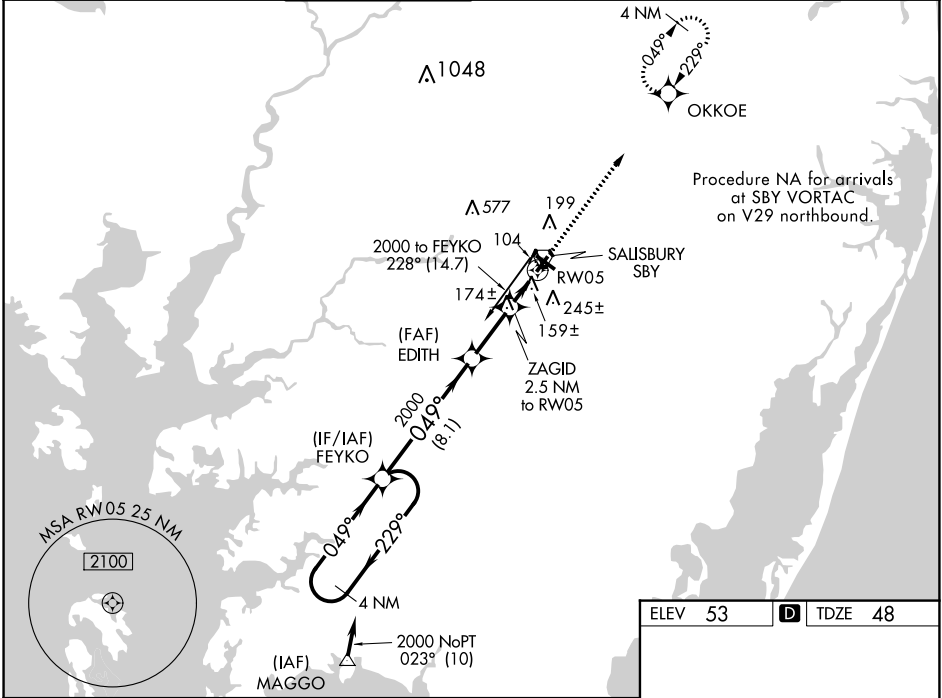
RNAV (GPS) RWY 5
SALISBURY-OCEAN CITY WICOMICO RGNL (SBY)

RNP APCH.

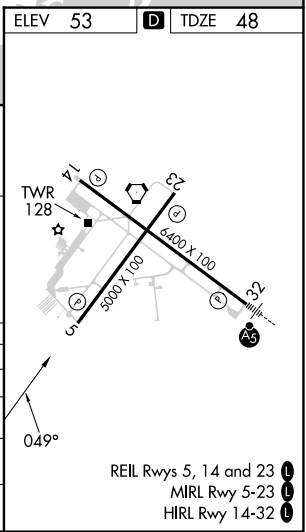
Baro-VNAV NA when using Georgetown altimeter setting. For uncompensated Baro-VNAV systems, LNAV/VNAV NA below -15°C or above 49°C. Visibility reduction by helicopters NA. When local altimeter setting not received use Georgetown altimeter setting: increase LPV DA to 394 feet and increase all Cats visibility ¼ SM; increase LNAV/VNAV DA to 512 feet and all Cats visibility ¼ SM; increase all MDA 60 feet and LNAV Cat C/D and Circling Cat D visibility ¼ SM.

MISSED APPROACH: Climb to 2000 direct OKKOE and hold.

ASOS 118.325	PATUXENT APP CON ★ 127.95 314.0	SALISBURY TOWER ★ 119.425 (CTAF) 0	GND CON 123.775	CLNC DEL 123.775	CLNC DEL 118.55 (when twr closed)	UNICOM 122.95
------------------------	---	---	---------------------------	----------------------------	--	-------------------------



4 NM Holding Pattern		FEYKO	*LNAV only.		2000	OKKOE
2000 ← 229°			2000			
GP 3.00°			2000			
TCH 39			*880			
		8.1 NM	3.4 NM	2.5 NM		
CATEGORY	A	B	C	D		
LPV DA	342-1		294 (300-1)			
LNAV/VNAV DA	460-1½		412 (500-1½)			
LNAV MDA	440-1		392 (400-1)		440-1¼	
					392 (400-1¼)	
CIRCLING	480-1	520-1	560-1½	700-2		
	427 (500-1)	467 (500-1)	507 (600-1½)	647 (700-2)		



NE-3, 26 DEC 2024 to 23 JAN 2025

NE-3, 26 DEC 2024 to 23 JAN 2025

