

Flight Procedures Cover Page	Task Action: FLIGHT CHECK	Task Type: IAP	Estimated Chart Date: 06/12/2025	APWS Task ID: 774A07913A014D0EBC52B844137454B5	APWS Project ID: 7DC5E783F7F74DBAB980846D502B592A
Procedure: RNAV (GPS) Y RWY 18L AMDT 2		Enroute: NO	Specialist: Gorman, Barbara		Agreement Number:
Airport ID: KCVG			Airport City: COVINGTON		State: KY
Facility ID:	Facility Type:	Flight Inspection Remark Type: Hold FC Slot			
<div>Procedure Comments: ACTIVE DATA USED FOR AIRPORT AND RUNWAY. VORMON PROJECT: CVG VORTAC DECOMMISSIONING CONTACT: CASIMIR TABAKA 405.954.7931</div> <div>QUALITY 20 CHECKED</div> <div>QUALITY 41 CHECKED</div>					

FIPC BASIC FORM							
PROCEDURE: RNAV (GPS) Y RWY 18L AMDT 2			AIRPORT NAME: CINCINNATI/NORTHERN KENTUCKY		AIRPORT ID: KCVG	SPECIAL CONTROL NO: AG-01-234-25	
FAC ID: KCVG18L.02Y		CITY: COVINGTON			ST: KY	ORIG CHART DATE: 06/12/2025	
DFL TYPE: PROC/S	THIRD PARTY: <input type="checkbox"/> YES	EST. TIME ON SITE: 0.4	REIMB. NUMBER:		PTS TASK ID: 774A07913A014D0EBC52B844137454B5		
PREFLIGHT NOTES							
REVIEWER:					DATE:		
COMMENTS:					CHECK ONE:		
					<input type="checkbox"/> FLT CK REQ <input type="checkbox"/> NFCR <input type="checkbox"/> REJECT		
							YES
					CPV COMPLETE?		X
PROCEDURE RESULTS							
INSPECTION DATE: 02/24/2025		CREW #: VN526	N #: N73	INSTRUMENT PROCEDURE STATUS: <input checked="" type="checkbox"/> SAT <input type="checkbox"/> SAT W/CHANGES <input type="checkbox"/> UNSAT		ARINC CODING: <input checked="" type="checkbox"/> SAT <input type="checkbox"/> SAT/GOLD <input type="checkbox"/> UNSAT	
FLIGHT INSPECTOR SIGNATURE: eric l geyer @ 02/24/2025 16:59			PRINTED NAME: GEYER, ERIC LEE			NOTAM INITIATED? <input type="checkbox"/> YES <input checked="" type="checkbox"/> NO	
FLIGHT INSPECTOR REMARKS: Cincinnati/Northern Kentucky INTL, Covington, KY, RNAV (GPS) Y RWY 18L AMDT 2. SAT. Modernization project with multiple new feeder legs.							
IN-FLIGHT OBSTACLE REPORT							
OBSTRUCTION ID #:	COORDINATES OR LOCATION:		GNSS ALTITUDE (MSL):		BAROMETRIC ALTITUDE (MSL):		HEIGHT ABOVE GROUND LEVEL:

WAAS CH 40103 W18A	APP CRS 186°	Rwy Idg 10000 TDZE 889 Apt Elev 896
--	------------------------	--

RNAV (GPS) Y RWY 18L

CINCINNATI/NORTHERN KENTUCKY INTL (CVG)

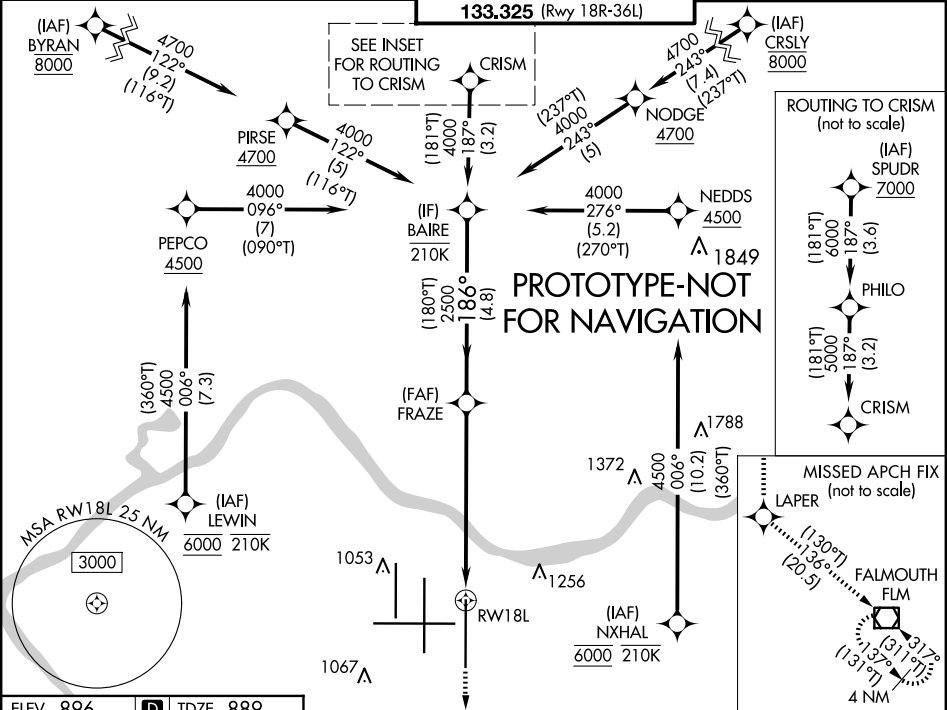
RNP APCH - GPS.

For uncompensated Baro-VNAV systems, LNAV/VNAV NA below -1.4°C or above 54°C. Simultaneous approach authorized. LNAV procedure NA during simultaneous operations. Use of FD or AP required during simultaneous operations. For inop ALS, increase LNAV/VNAV all Cats and LNAV Cat C and D visibility to 1 3/8 SM.

MALSR

MISSED APPROACH: Climb to 3000 direct LAPER and on track 136° to FLM VOR/DME and hold.

D-ATIS	CINCINNATI APP CON	CINCINNATI TOWER	GND CON	CLNC DEL	CPDLC
ARR 134.375 DEP 135.3	119.7 363.15 (090°-269°) 123.875 363.15 (270°-089°)	118.3 (Rwy 9-27, 18C-36C) 118.975 360.85 (Rwy 18L-36R) 133.325 (Rwy 18R-36L)	121.7	127.175	



ELEV 896 TDZE 889

3000 LAPER

tr 136°

FLM

VGSI and RNAV glidepath not coincident (VGSI Angle 3.00/TCH 71).

1.3 NM to RW18L

2500

2500

1.3 NM 3.6 NM 4.8 NM

BAIRE 4000

GP 3.00° TCH 55

CATEGORY	A	B	C	D
LPV DA	1089/18 200 (200-1/2)			
LNAV/VNAV DA	1360/50 471 (500-1)			
LNAV MDA	1360/24 471 (500-1/2)		1360/50 471 (500-1)	
CIRCLING	1460-1 564 (600-1)		1560-2 664 (700-1 3/4) 1560-2 664 (700-2)	

TDZ/CL Rwy 9, 18C, 18L, 18R, 36C, 36L and 36R

HIRL all Rwy

CURRENT

COVINGTON, KENTUCKY

AL-655 (FAA)

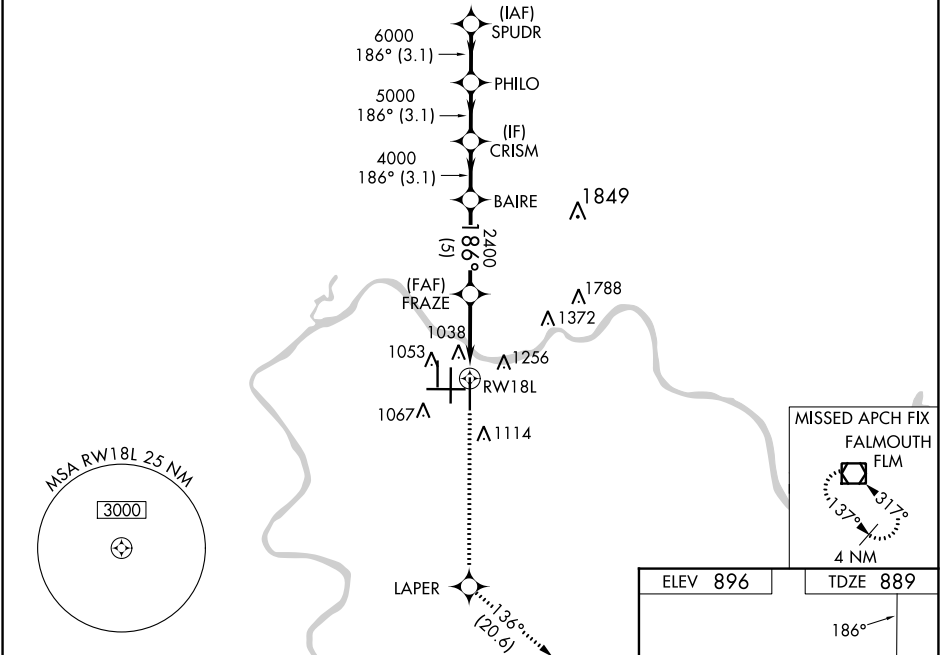
23222

WAAS CH 40103 W18A	APP CRS 186°	Rwy Idg 10000 TDZE 889 Apt Elev 896
--	------------------------	--

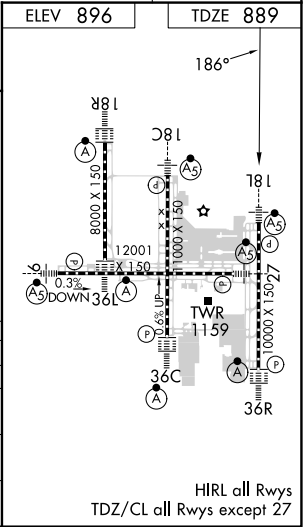
RNAV (GPS) Y RWY 18L
CINCINNATI/NORTHERN KENTUCKY INTL (CVG)

RADAR required for procedure entry. RNP APCH - GPS.	MALSR	MISSED APPROACH: Climb to 3000 direct LAPER and on track 136° to FLM VOR/DME and hold.
▼ For uncompensated Baro-VNAV systems, LNAV/VNAV NA below -17°C or above 54°C. Simultaneous approach authorized with Rwy 18C/R. LNAV procedure NA during simultaneous operations. Use of FD or AP required during simultaneous operations. For inop ALS, increase LNAV/VNAV all Cats and LNAV Cat C/D visibility to 1½ SM.		

D-ATIS ARR 134.375 DEP 135.3	CINCINNATI APP CON 119.7 363.15 (090°-269°) 123.875 363.15 (270°-089°)	CINCINNATI TOWER 118.975 360.85 (RWY 18L/36R) 118.3 (RWYS 18C/36C, 09/27) 133.325 (RWY 18R/36L)	GND CON 121.7	CLNC DEL 127.175	CPDLC
---	--	---	-------------------------	----------------------------	-------



3000	LAPER	FLM	VGSI and RNAV glidepath not coincident (VGSI Angle 3.00/TCH 71).
↑			
1.3 NM to RWY 18L	FRAZE	BAIRE	CRISM
2400	4000	5000	6000
1.3 NM	3.3 NM	5 NM	3.1 NM
3.1 NM	3.1 NM	3.1 NM	
GP 3.00° TCH 55			
CATEGORY	A	B	C
LPV DA		1089/18	200 (200-½)
LNAV/VNAV DA		1395/55	506 (500-1)
LNAV MDA	1360/24	471 (500-½)	1360/50 471 (500-1)
CIRCLING	1460-1 564 (600-1)	1560-1¾ 664 (700-1¾)	1560-2 664 (700-2)



COVINGTON, KENTUCKY
Amdt 1E 24MAR22

CINCINNATI/NORTHERN KENTUCKY INTL (CVG)
39°03'N-84°40'W
RNAV (GPS) Y RWY 18L

SE-1, 10 AUG 2023 to 07 SEP 2023

SE-1, 10 AUG 2023 to 07 SEP 2023

