

Flight Procedures Cover Page	Task Action: FLIGHT CHECK	Task Type: DVA	Estimated Chart Date: 02/20/2025	APWS Task ID: 7717235D22E6475A89B4104FA8A3A4B5	APWS Project ID: 54814F8B06FD4634878512AE9129BA53
Procedure: DIVERSE VECTOR AREA (RADAR VECTORS) AMDT 2		Enroute: NO	Specialist: Krueger, Zachary		Agreement Number:
Airport ID: KHWD			Airport City: HAYWARD		State: CA
Facility ID:	Facility Type:	Flight Inspection Remark Type: New FC Slot			
<div>Procedure Comments: FULL AMENDMENT COMPLETED USING ACTIVE DATA.  CLEAR NOTAM !FDC 3/0500  RWY 10L REQUIRES MINIMUM CLIMB OF 211 FT PER NM TO 300. ALL OTHER DATA REMAINS AS PUBLISHED.  CONTACT ERIC SUSKI: 405-650-4749.  <div>Digitally signed by <b>ERIC N SUSKI</b> Nov 13, 2024</div></div>					

QUALITY  
23  
CHECKED



24249

# TAKEOFF MINIMUMS, (OBSTACLE) DEPARTURE PROCEDURES, AND DIVERSE VECTOR AREA (RADAR VECTORS)



## HANFORD, CA

### HANFORD MUNI (HJO)

#### TAKEOFF MINIMUMS AND (OBSTACLE) DEPARTURE PROCEDURES

AMDT 1A 15SEP16 (16259) (FAA)

##### DEPARTURE PROCEDURE:

**Rwy 14**, climbing left turn heading 050° to intercept V-23.

**Rwy 32**, climbing right turn heading 050° to intercept V-23.

##### TAKEOFF OBSTACLE NOTES:

**Rwy 14**: fence 9' from DER, 298' left of centerline, 244' MSL.

Catenary 1293' from DER, 1293' left of centerline, 39' AGL/287' MSL.

Poles beginning 1679' from DER, crossing centerline, up to 52' AGL/296' MSL.

Trees beginning 2224' from DER, 391' left of centerline up to 313' MSL.

**Rwy 32**: fence 168' from DER, 9' left of centerline, 245' MSL.

Pole 588' from DER, 588' left of centerline, 25' AGL/278' MSL.

Sign 614' from DER, 151' right of centerline, 9' AGL/261' MSL.

Trees and poles beginning 592' from DER, 3' left of centerline, up to 300' MSL.

Poles beginning 1127' from DER, 222' right of centerline, up to 40' AGL/293' MSL.

Tree 2159' from DER, 434' right of centerline, 299' MSL.

OLD

## HAYWARD, CA

### HAYWARD EXEC (HWD)

#### TAKEOFF MINIMUMS AND (OBSTACLE) DEPARTURE PROCEDURES

AMDT 1 13JAN11 (21140) (FAA)

##### DEPARTURE PROCEDURE:

**Rwys 10L, 10R**, climbing right turn direct OSI VORTAC.

**Rwys 28L, 28R**, climbing left turn direct OSI VORTAC.

##### TAKEOFF OBSTACLE NOTES:

**Rwy 10L**, hangars, trees and buildings beginning 625' from DER, 67' left of centerline, up to 100' AGL/155' MSL.

Trees beginning 2050' from DER, 1' right of centerline, up to 60' AGL/107' MSL.

**Rwy 10R**, trees, poles, and buildings beginning 21' from DER, 61' left of centerline, up to 100' AGL/155' MSL.

Windsock, blast fence, trees, buildings and pole beginning 23' from DER, 38' right of centerline, up to 74' AGL/119' MSL.

**Rwy 28L**, trees beginning 899' from DER, 141' left of centerline, up to 93' AGL/108' MSL.

Antennas, road, and trees beginning 108' from DER, 68' right of centerline, up to 87' AGL/102' MSL.

**Rwy 28R**, antenna and trees beginning 728' from DER, 28' left of centerline, up to 87' AGL/102' MSL.

Trees beginning 391' from DER, 4' right of centerline, up to 95' AGL/125' MSL.

### HAYWARD EXECUTIVE (HWD)

#### DIVERSE VECTOR AREA (RADAR VECTORS)

AMDT 1 07JAN16 (16007) (FAA)

**Rwys 10L/R**, heading as assigned by ATC.

**Rwys 28L/R**, heading as assigned by ATC; requires min. climb of 310' per NM to 4600.

## HOLLISTER, CA

### HOLLISTER MUNI (CVH)

#### TAKEOFF MINIMUMS AND (OBSTACLE) DEPARTURE PROCEDURES

AMDT 1 05JUN08 (08157) (FAA)

##### TAKEOFF MINIMUMS:

**Rwy 6**, NA-obstacles.

**Rwy 24**, NA-ATC.

**Rwy 13**, std. w/ min. climb of 391' per NM to 3500, or 3100-3 for climb in visual conditions.

**Rwy 31**, std. w/ min climb of 209' per NM to 2300, or 3100-3 for climb in visual conditions.

##### DEPARTURE PROCEDURE:

**Rwy 13**, climbing right turn to heading 332° and via SJC R-121 direct SJC VOR/DME to 6000 before proceeding on course or for climb in visual conditions: cross Hollister Muni Airport at or above 3100 MSL before proceeding on course.

**Rwy 31**, climb heading 307° and via SJC R-121 direct SJC VOR/DME to 6000 before proceeding on course or for climb in visual conditions: cross Hollister Muni Airport at or above 3100 MSL before proceeding on course.

##### TAKEOFF OBSTACLE NOTES:

**Rwy 13**, terrain beginning 992' from DER, 348' left of centerline, up to 289' MSL.

Terrain beginning 2467' from DER, 154' right of centerline, up to 309' MSL.

Trees beginning 1277' from departure end of runway, 348' left of centerline, up to 309' MSL.

Trees beginning 2467' from DER, 153' right of centerline, up to 270' MSL.

**Rwy 31**, terrain beginning 76' from DER, 392' left of centerline, up to 247' MSL.

Terrain beginning 14' from DER, 179' right of centerline, up to 231' MSL.

03 OCT 2024 to 31 OCT 2024

03 OCT 2024 to 31 OCT 2024



24249

# TAKEOFF MINIMUMS, (OBSTACLE) DEPARTURE PROCEDURES, AND DIVERSE VECTOR AREA (RADAR VECTORS)



SW-2

**PLEASE RETAIN WITH PACKAGE**  
**HAYWARD EXECUTIVE (KHWD) AMDT 2**

NCT ATC requested DVA expansion to include all headings to 15 NM with a maximum climb gradient of 350 FT per NM. RWY 10L and 10R have rapidly rising terrain 3 miles from the DER which will only allow expansion of a few degrees before exceeding 350 FT CG. ATC decided to forego expansion to keep the standard CG. RWY 28L and 28R expanded to include all headings and the distance increased to 18 NM.

**Results:**

RWY 10L, 135 CW 284 to 11 NM from DRP. CONTROL OBSTACLES: CONTROL OBSTACLES: 192 MSL TREE (06-305847) AT 373842.98N1220613.88W.

RWY 10R, 135 CW 284 to 11 NM from DRP, terrain at 373545N/1215912W, 373109.00N/1215330.00W and RWY reciprocal heading.

RWY 28L, all headings to 18 NM from DRP, ATC requested headings. Requires minimum climb of 310 FT per NM to 4600. CONTROL OBSTACLES: 1699 MSL AAO ON TERRAIN AT 373921.00N1220012.00W

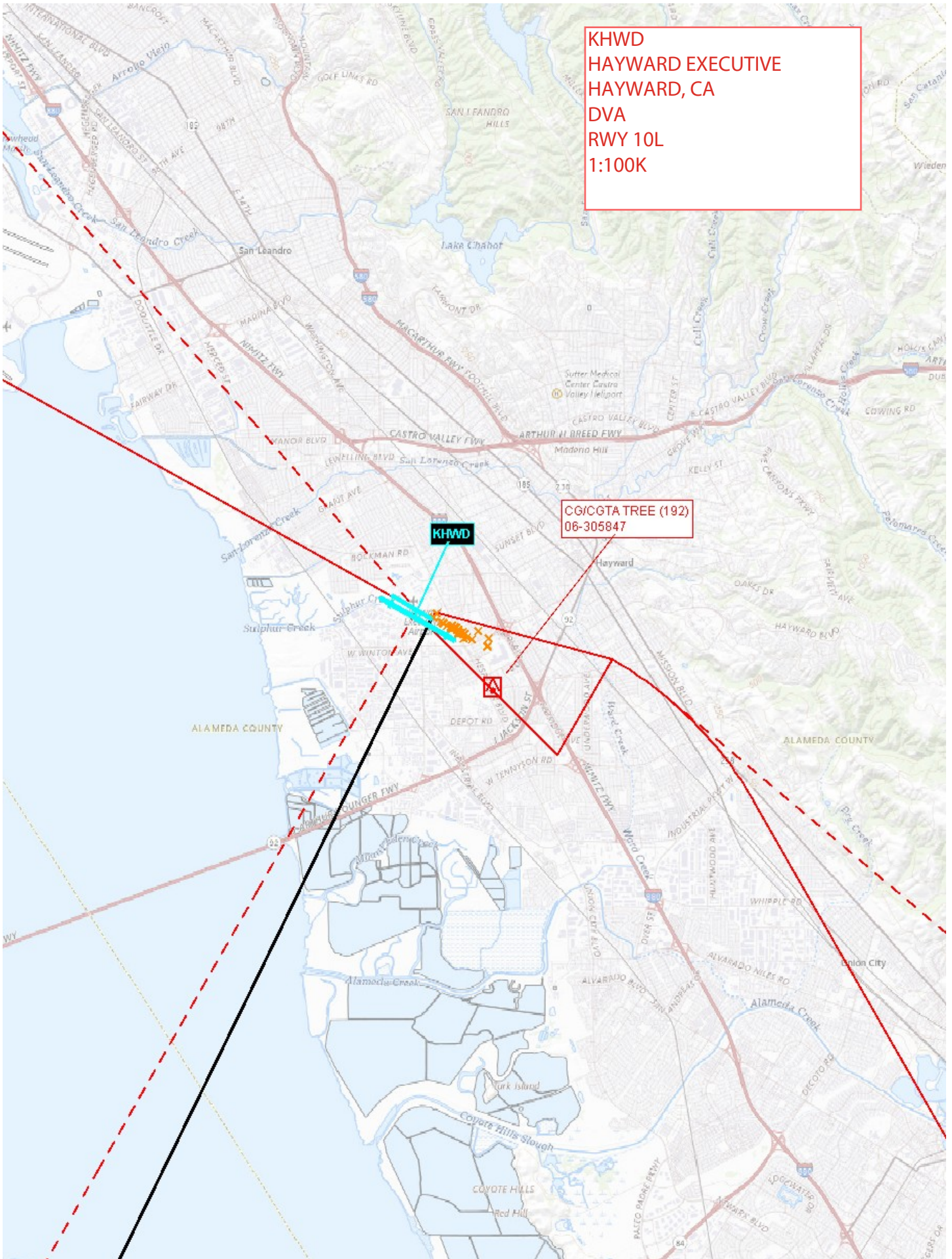
RWY 28R, all headings to 18 NM from DRP, ATC requested headings. Requires minimum climb of 310 FT per NM to 4600. CONTROL OBSTACLES: 1004 MSL AAO ON TERRAIN AT 374327.00N1220709.00W

RADAR Facility and MAG VAR Information: Procedure predicated on FUSION using OAK ASR-9 at 374222.10N/1221331.19W (PRIMARY) or NUQ ASR-9 at 372528.28N/1220053.36W (BACK-UP).

MAGNETIC COURSES BASED ON AIRPORT MAG VAR 15E: EPOCH YR 2005.

Contact Information: Facility Manager, Donald H. Kirby, (916) 366-4001, Don.Kirby@faa.gov;  
Operations Support Manager (Procedures Specialist), Thann McLeod, (916) 366-4008,  
thann.mcleod@faa.gov.

KHWD  
HAYWARD EXECUTIVE  
HAYWARD, CA  
DVA  
RWY 10L  
1:100K



CG/CGTA TREE (192)  
06-305847

KHWD



KHWD  
HAYWARD EXECUTIVE  
HAYWARD, CA  
DVA  
RWY 10R  
1:100K

PA FAA XML

KHWD

ALAMEDA COUNTY

ALAMEDA COUNTY

Union City

COYOTE HILLS

Red Hill



KHWD  
HAYWARD EXECUTIVE  
HAYWARD, CA  
DVA  
RWY 28L  
1:100K

CG/CGTA TERRAIN+AAO (1699)  
TP\_121089\_DIVB

KHWD





KHWD  
HAYWARD EXECUTIVE  
HAYWARD, CA  
DVA  
RWY 28R  
1:100K

CG/CGTA TERRAIN+AAO (1004)  
TP\_272583\_DIVA

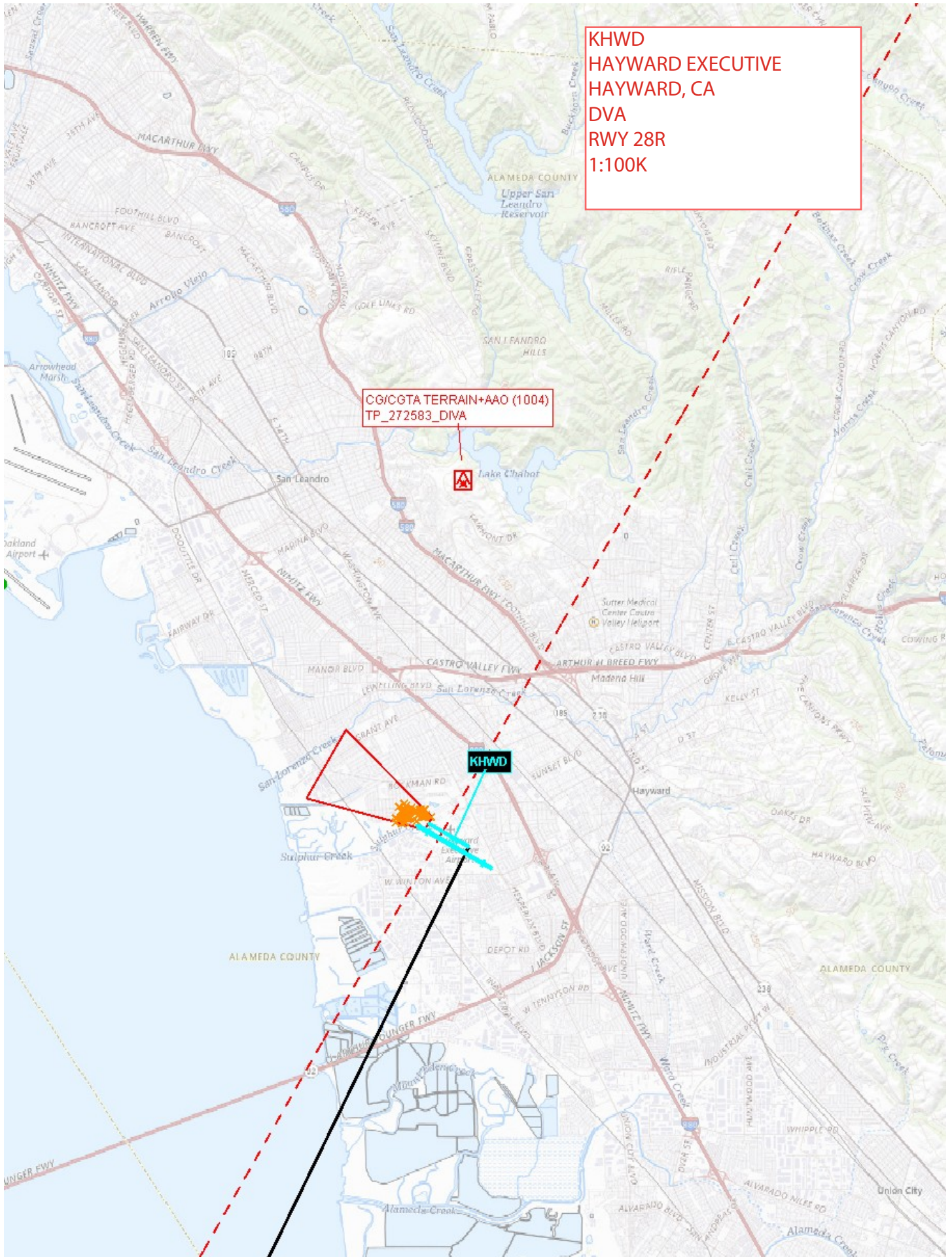


Lake Chabot

KHWD

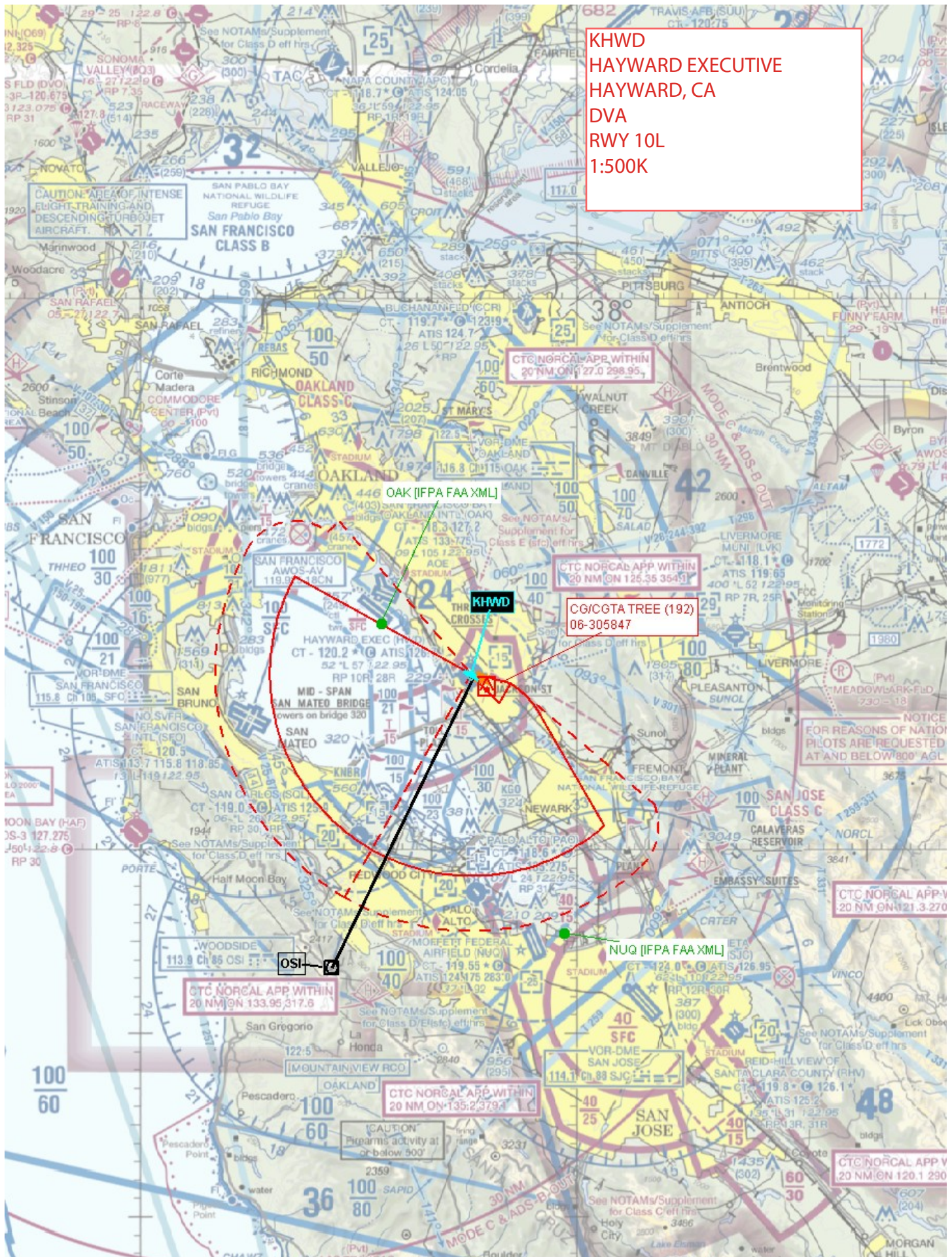


Hayward Executive Airport



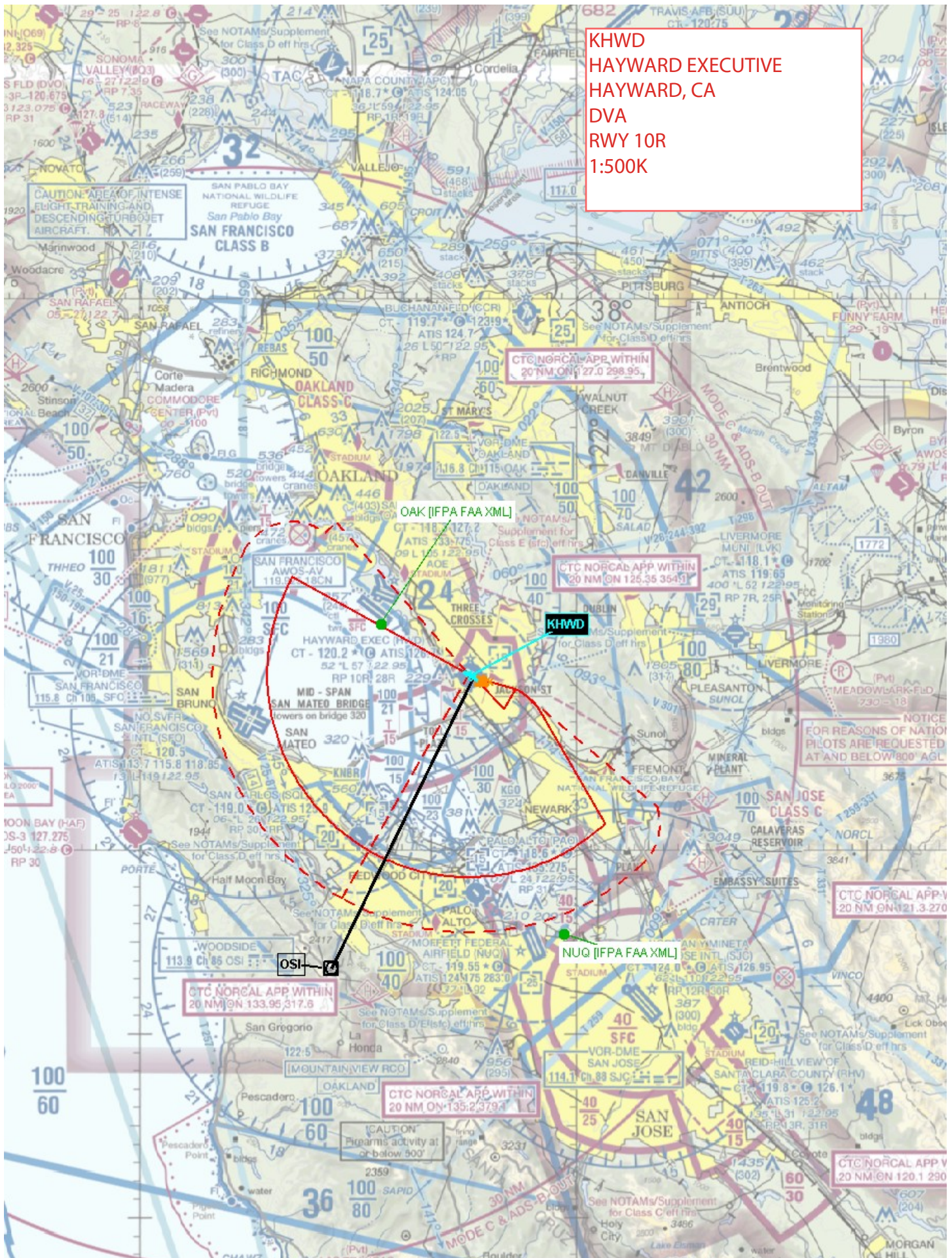


KHWD  
HAYWARD EXECUTIVE  
HAYWARD, CA  
DVA  
RWY 10L  
1:500K





KHWD  
HAYWARD EXECUTIVE  
HAYWARD, CA  
DVA  
RWY 10R  
1:500K





KHWD  
HAYWARD EXECUTIVE  
HAYWARD, CA  
DVA  
RWY 28L  
1:500K





KHWD  
HAYWARD EXECUTIVE  
HAYWARD, CA  
DVA  
RWY 28R  
1:500K

CGTA TERRAIN+AAO (4035)  
TP\_193575\_DIVB

CG TERRAIN+AAO (1004)  
TP\_272583\_DIVA

OAK [IFPA FAA XML]

CTG NORCAP APP WITHIN  
20 NM ON 127.0-128.95

UP WITHIN

CL  
AT

118.1  
119.6

17

02



NOTICE  
FOR REASONS OF NATIONAL  
PILOTS ARE REQUESTED TO  
AT AND BELOW 800' AGL IN

CTC NORCAL APP-WIT  
20 NM ON 121.3-270.35

CTC NORCAL APP WITH  
20 NM @N 120.1 290.25

Firearms activity at  
or below 500'