

Flight Procedures Cover Page	Task Action: FLIGHT CHECK	Task Type: IAP	Estimated Chart Date: 10/02/2025	APWS Task ID: 769F939979DC430FABB6907BCB283CD5	APWS Project ID: C50F020094264B7C91CEB41DE4E581D9
Procedure: RNAV (GPS) Y RWY 2 AMDT 4		Enroute: NO	Specialist: Purnell, Troy		Agreement Number:
Airport ID: PHOG			Airport City: KAHULUI		State: HI
Facility ID:	Facility Type:	Flight Inspection Remark Type: New FC Slot			
<div>Procedure Comments:</div> <div>CANCEL FDC NOTAM 4/2819.</div> <div>REMOVED SPEED RESTRICTION AT GREHG.</div> <div>CONTACT ROBERT G. HAMILTON, AJV-A33 405-954-4608.</div> <div><div>QUALITY 38 CHECKED</div><div>QUALITY 40 CHECKED</div></div>					

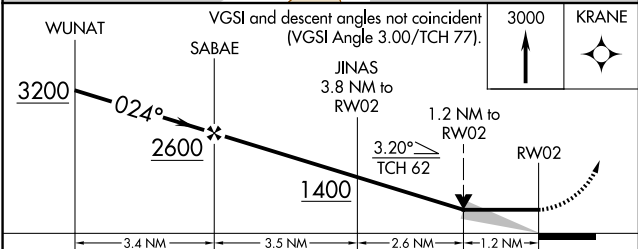
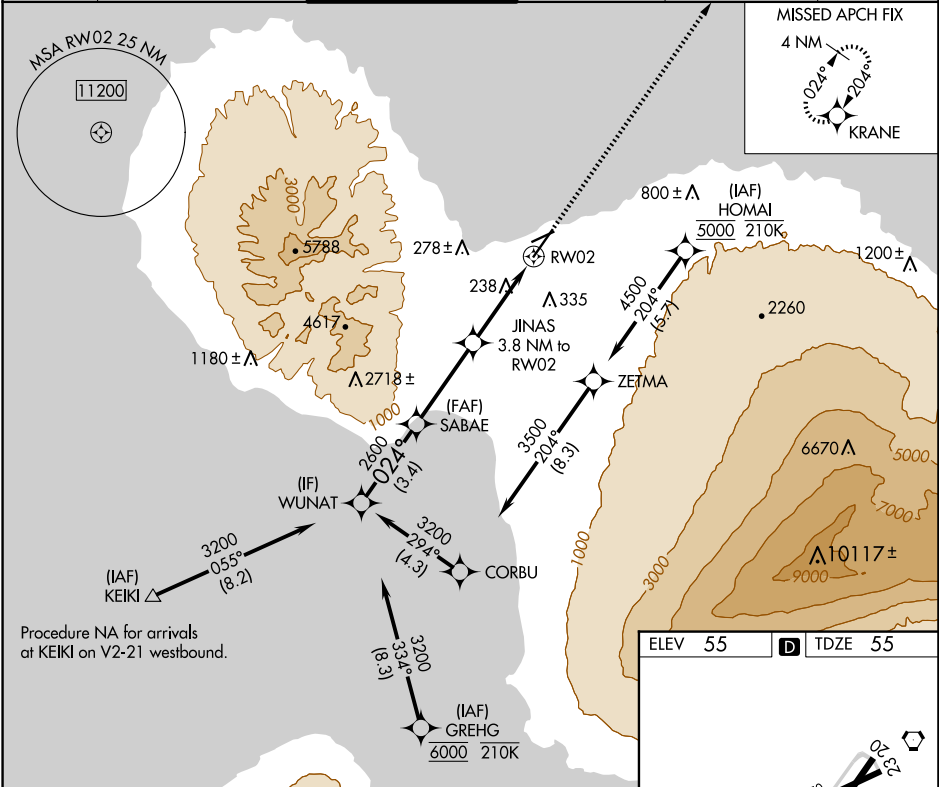
<b>FIPC BASIC FORM</b>							
<b>PROCEDURE:</b> RNAV (GPS) Y RWY 2 AMDT 4			<b>AIRPORT NAME:</b> KAHULUI		<b>AIRPORT ID:</b> PHOG	<b>SPECIAL CONTROL NO:</b> PG-05-188-25	
<b>FAC ID:</b> PHOG02.04Y		<b>CITY:</b> KAHULUI			<b>ST:</b> HI	<b>ORIG CHART DATE:</b> 10/02/2025	
<b>DFL TYPE:</b> PROC/G	<b>THIRD PARTY:</b> <input type="checkbox"/> YES	<b>EST. TIME ON SITE:</b> 0.5	<b>REIMB. NUMBER:</b>		<b>PTS TASK ID:</b> 769F939979DC430FABB6907BCB283CD5		
<b>PREFLIGHT NOTES</b>							
<b>REVIEWER:</b> jordan rolih					<b>DATE:</b> 07/15/2025		
<b>COMMENTS:</b>					<b>CHECK ONE:</b>		
					<input checked="" type="checkbox"/> FLT CK REQ <input type="checkbox"/> NFCR <input type="checkbox"/> REJECT		
							YES
					<b>CPV COMPLETE?</b>		X
<b>PROCEDURE RESULTS</b>							
<b>INSPECTION DATE:</b> 07/15/2025		<b>CREW #:</b> VN408	<b>N #:</b> N89	<b>INSTRUMENT PROCEDURE STATUS:</b> <input checked="" type="checkbox"/> SAT <input type="checkbox"/> SAT W/CHANGES <input type="checkbox"/> UNSAT		<b>ARINC CODING:</b> <input checked="" type="checkbox"/> SAT <input type="checkbox"/> SAT/GOLD <input type="checkbox"/> UNSAT	
<b>FLIGHT INSPECTOR SIGNATURE:</b> jordan rolih @ 07/15/2025 17:46			<b>PRINTED NAME:</b> ROLIH, JORDAN ALEXANDER			<b>NOTAM INITIATED?</b> <input type="checkbox"/> YES <input checked="" type="checkbox"/> NO	
<b>FLIGHT INSPECTOR REMARKS:</b>							
<b>IN-FLIGHT OBSTACLE REPORT</b>							
<b>OBSTRUCTION ID #:</b>	<b>COORDINATES OR LOCATION:</b>		<b>GNSS ALTITUDE (MSL):</b>		<b>BAROMETRIC ALTITUDE (MSL):</b>		<b>HEIGHT ABOVE GROUND LEVEL:</b>

APP CRS	Rwy Idg	6995
024°	TDZE	55
	Apt Elev	55

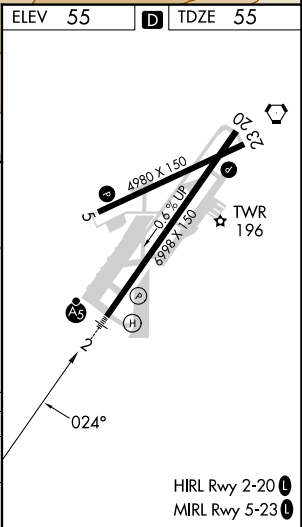
RNAV (GPS) Y RWY 2  
KAHALUI (OGG)(PHOG)

RNP APCH-GPS.	MALS R	MISSED APPROACH: Climb to 3000 direct KRANE and hold.
When Kahului altimeter setting not received, procedure NA.		

ATIS 128.6	HCF APPROACH 120.2 322.4 (NORTH) 119.5 225.4 (SOUTH)	MAUI TOWER ★ 118.7 (CTAF) 0 279.6	GND CON 121.9 279.6	CLNC DEL 120.6 290.5	UNICOM 122.95
---------------	--	--------------------------------------	------------------------	-------------------------	------------------



CATEGORY	A	B	C	D
LNAV MDA	500-1/2 445 (500-1/2)	500-7/8 445 (500-7/8)	500-7/8 445 (500-7/8)	500-7/8 445 (500-7/8)
CIRCLING	500-1 445 (500-1)	620-1 565 (600-1)	740-2 685 (700-2)	1140-3 1085 (1100-3)

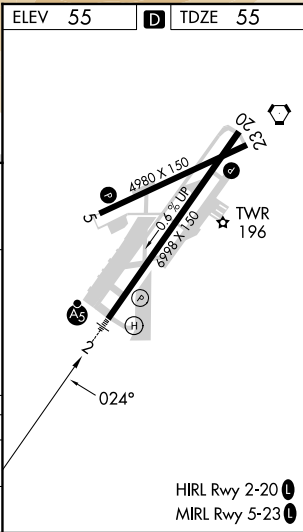
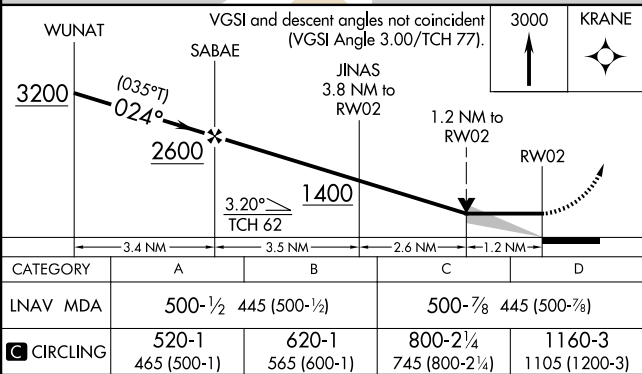
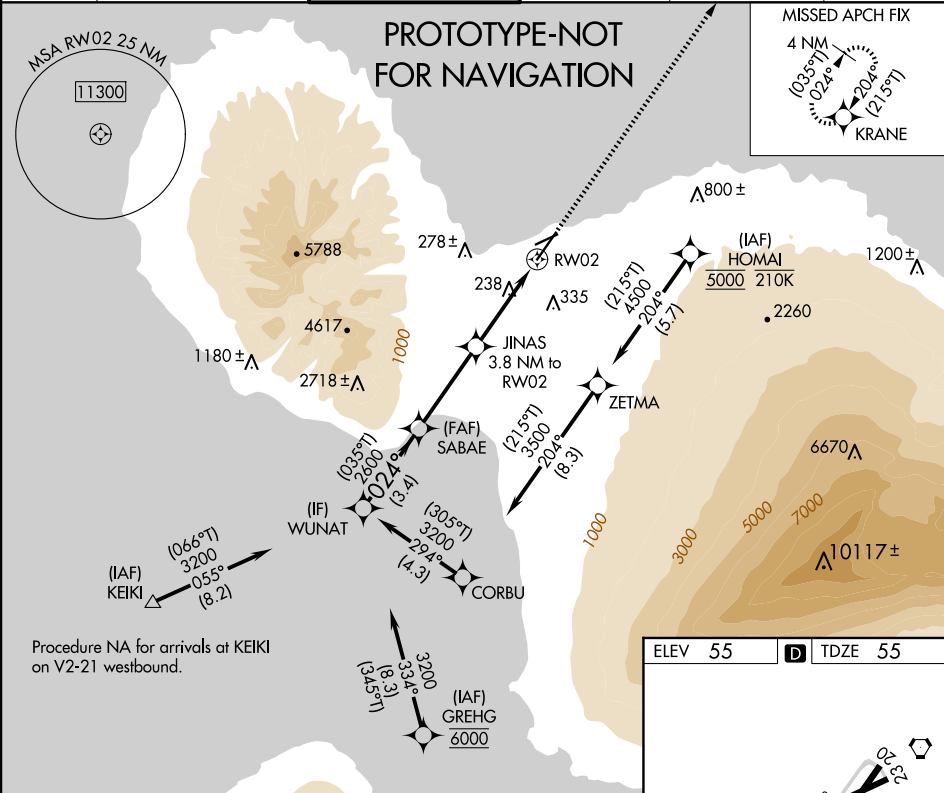


APP CRS	Rwy Ldg	6995
024°	TDZE	55
	Apt Elev	55

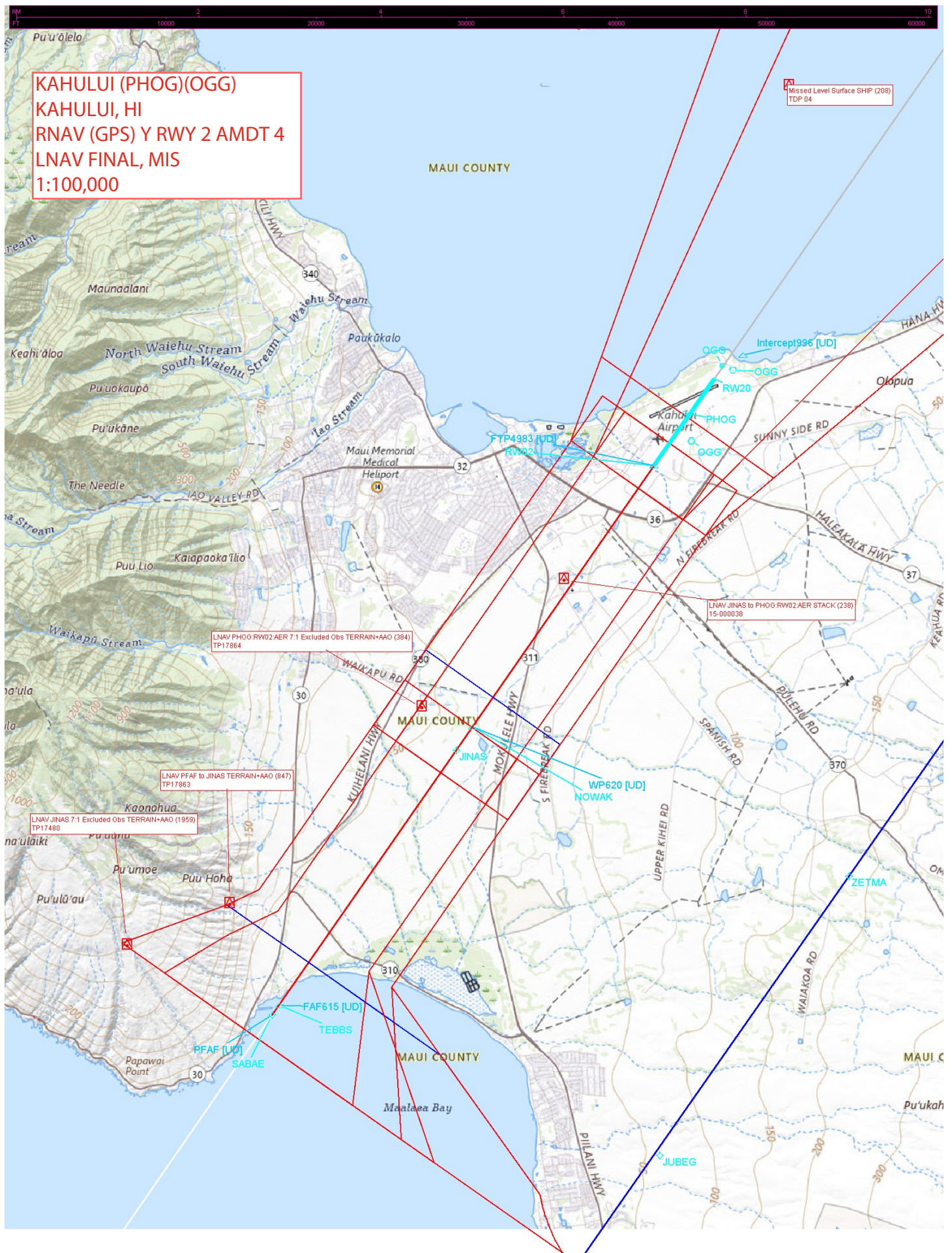
# RNAV (GPS) Y RWY 2

KAHULUI (OGG)(PHOG)

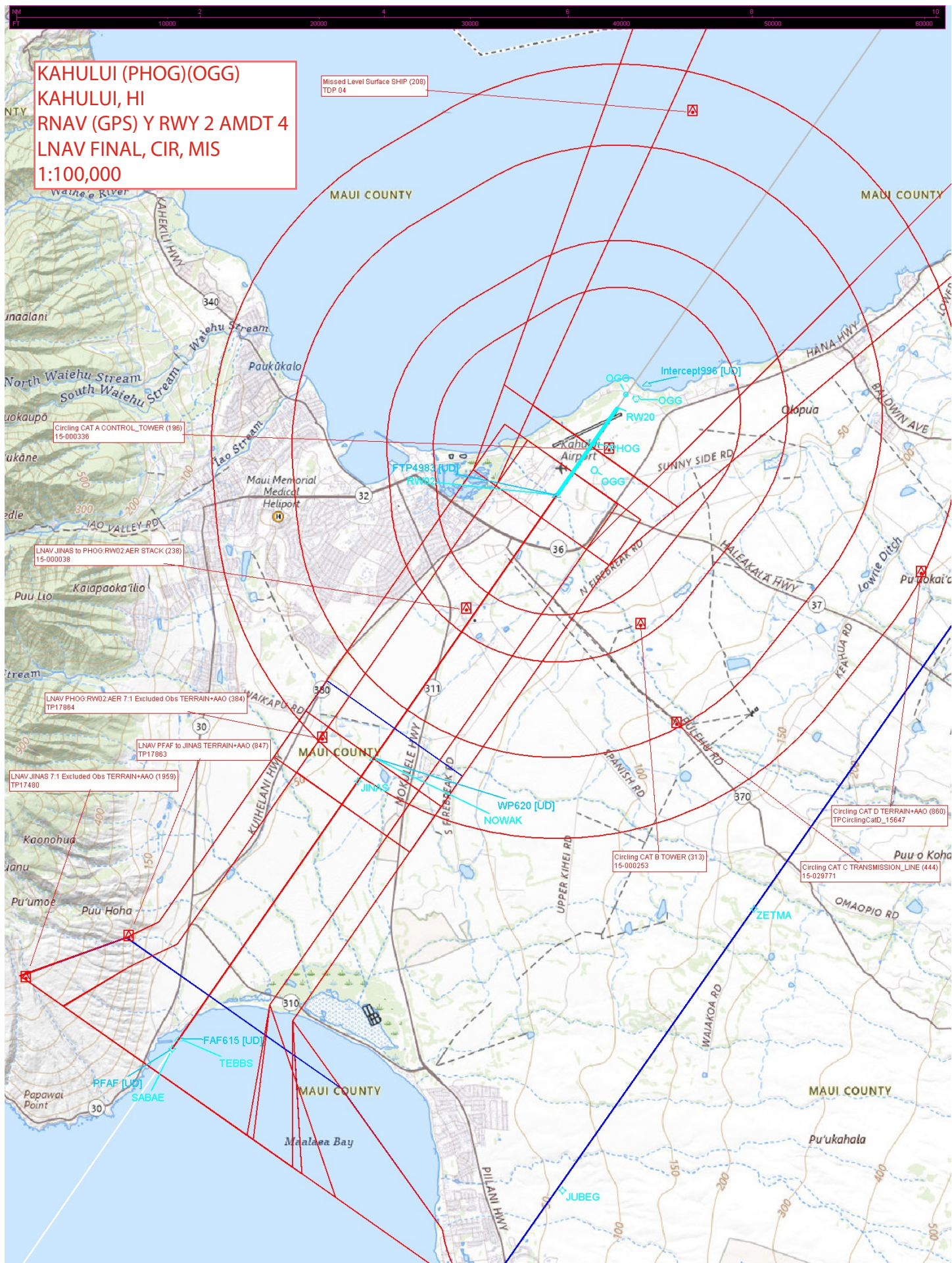
RNP APCH - GPS.		MALSR	MISSED APPROACH: Climb to 3000 direct KRANE and hold.		
When Kahului altimeter setting not received, procedure NA.					
ATIS	HCF APPROACH	MAUI TOWER ★	GND CON	CLNC DEL	UNICOM
128.6	120.2 322.4 (NORTH) 119.5 225.4 (SOUTH)	118.7 (CTAF) 0 279.6	121.9 279.6	120.6 290.5	122.95













1:500,000

CTC HCF APP WITHIN  
20 NM ON 120.2 322.4

**KRANE TERRAIN**  
TP T504

**WARNING:** High volume Tour Aircraft operating over Maui. Monitor 120.65 for traffic information.

CTC HCF APP WITHIN  
20 NM ON 119.5 225.4

**HALEAKALA NATIONAL PARK**  
prohibits flight of VFR helicopters or fixed-wing aircraft  
SL over the following areas in Haleakala National Park:  
Crater Cabins, the Scientific Research Reserve,  
Mauna Gap Trail or any designated tourist viewpoint.