

Flight Procedures Cover Page	Task Action: P-NOTAM	Task Type: IAP	Estimated Chart Date: 06/17/2021	APWS Task ID: 76896EE07DE54893843BDB5C8ED5F9C7	APWS Project ID: 07DEFF40358440549AA8D0B4AAAC1DD5
Procedure: RNAV (GPS) RWY 13 AMDT 1C		Enroute: NO	Specialist: Lafferty, James		Agreement Number:
Airport ID: KHIB			Airport City: HIBBING		State: MN
Facility ID:	Facility Type:	Flight Inspection Remark Type:			
<div> <div>Procedure Comments:</div> <div> P-NOTAM Order 8260.3, chapter 2, New Circling Criteria Applied Contact Dave Teffeteller at 202-267-5177 </div> </div> <div> <div>QUALITY</div> <div>45</div> <div>CHECKED</div> </div>					

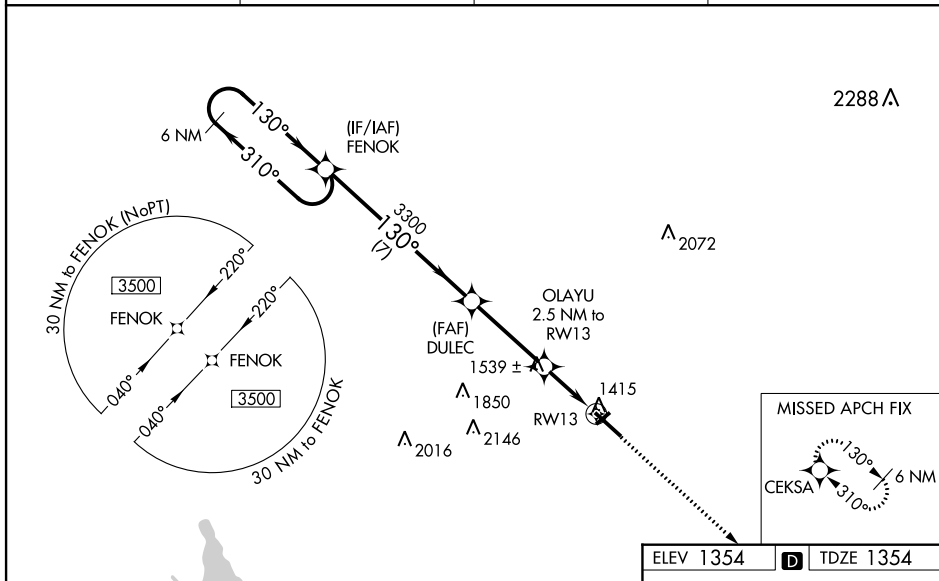
WAAS CH 69222 W13A	APP CRS 130°	Rwy Idg TDZE 1354 Apt Elev 1354
--	------------------------	---

RNAV (GPS) RWY 13

RANGE RGNL (HIB)

-30°C/-22°F	<p>Circling to Rwy 4 NA at night. DME/DME RNP-0.3 NA. VDP and Baro-VNAV NA when using Eveleth altimeter setting. For uncompensated Baro-VNAV systems, LNAV/VNAV NA below -17°C (2°F) or above 35°C (95°F). Helicopter visibility reduction below ¾ SM NA. When local altimeter setting not received, use Eveleth altimeter setting and increase all DA 36 feet, and all MDA 40 feet, and increase LNAV Cat C/D visibility to 1 mile. Inop table does not apply to LPV and LNAV/VNAV all Cats. For inop MALSR, increase LNAV Cat A/B visibility to 1 mile. For inop MALSR when using Eveleth altimeter setting, increase LPV and LNAV/VNAV all Cats visibility to ¾.</p>	<p>MALSR</p>	<p>MISSED APPROACH: Climb to 3500 direct CEKSA and hold.</p>
-------------	---	--------------	--

ASOS 126.425	DULUTH APP CON 125.45 255.9	CLNC DEL 127.4	UNICOM 123.0 (CTAF) 0
------------------------	---------------------------------------	--------------------------	--



<p>6 NM Holding Pattern</p> <p>FENOK</p> <p>3500</p> <p>310°</p> <p>130°</p> <p>130°</p> <p>3300</p> <p>DULEC</p> <p>3300</p> <p>OLAYU 2.5 NM to RW13</p> <p>*1.3 NM to RW13</p> <p>*2180</p> <p>RW13</p> <p>GP 3.00°</p> <p>TCH 48</p> <p>7 NM</p> <p>3.5 NM</p> <p>1.2 NM</p> <p>1.3 NM</p>				
CATEGORY	A	B	C	D
LPV DA		1604-¾	250 (300-¾)	
LNAV/VNAV DA		1614-¾	260 (300-¾)	
LNAV MDA	1800-¾	446 (500-¾)	1800-7/8	446 (500-7/8)
CIRCLING	1820-1	1840-1	1840-1½	1920-2
	466 (500-1)	486 (500-1)	486 (500-1½)	566 (600-2)

