

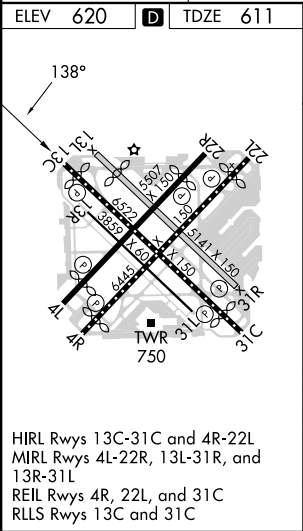
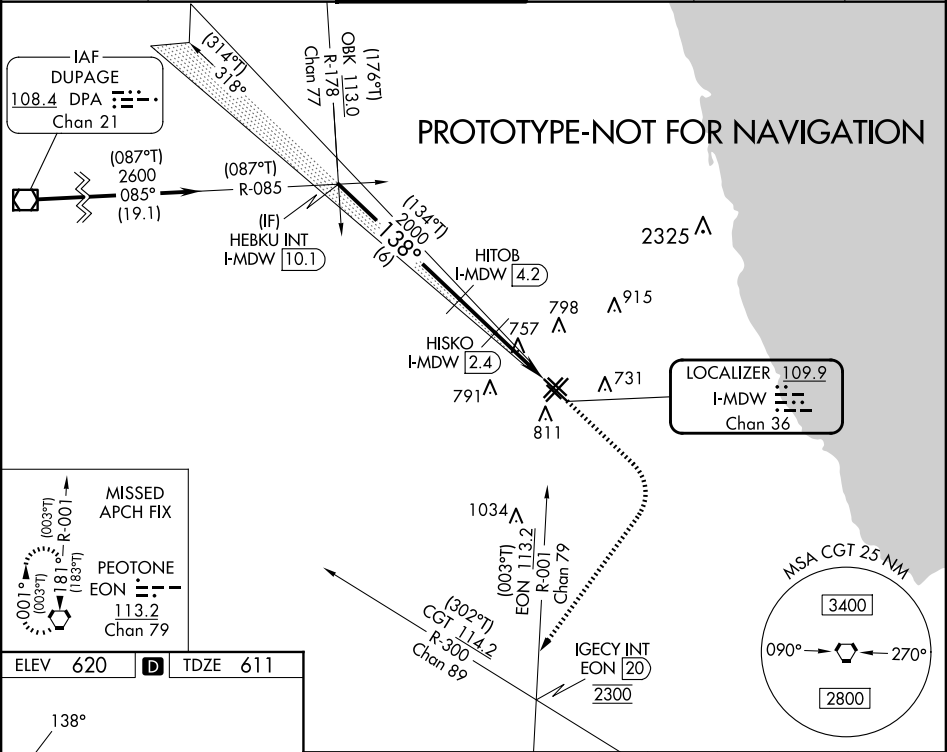
Flight Procedures Cover Page	Task Action: FLIGHT CHECK	Task Type: IAP	Estimated Chart Date: 06/12/2025	APWS Task ID: 75882E6E56B947B49C663414EED321B6	APWS Project ID: 284FDC49D5834EDC9B596AFD61112324
Procedure: ILS OR LOC RWY 13L ORIG		Enroute: NO	Specialist: Martinez, Rafael		Agreement Number:
Airport ID: KMDW			Airport City: CHICAGO		State: IL
Facility ID: MDW	Facility Type: ILS	Flight Inspection Remark Type: New FC Slot			
<div>Procedure Comments:</div> <div>RUNWAY 13C/31C DEACTIVATED. RWY 13C/31C RENUMBERED AS NEW RWY 13L/31R.</div> <div>PENDING DATA USED FOR NAVAID I-MDW ILS, KMDW AIRPORT AND RUNWAY (06-12-2025).</div> <div>CONTACT: BEV L BORDY: 405-954-8293/ROBERT G HAMILTON 405-954-4608.</div> <div><div>QUALITY 38 CHECKED</div><div>QUALITY 29 CHECKED</div></div>					

FIPC BASIC FORM						
PROCEDURE: ILS OR LOC RWY 13L ORIG			AIRPORT NAME: CHICAGO MIDWAY INTL		AIRPORT ID: KMDW	SPECIAL CONTROL NO: BP-03-315-25
FAC ID: MDW		CITY: CHICAGO			ST: IL	ORIG CHART DATE: 06/12/2025
DFL TYPE: PROC/A	THIRD PARTY: <input type="checkbox"/> YES	EST. TIME ON SITE: 0.4	REIMB. NUMBER:	PTS TASK ID: 75882E6E56B947B49C663414EED321B6		
PREFLIGHT NOTES						
REVIEWER: glen b freeman					DATE: 04/03/2025	
COMMENTS: ILS OR LOC RWY 13C ADMT 1 CANCELLED, ORIGINAL ILS OR LOC RWY 13L CREATED - RUNWAYS 13C/31C DEACTIVATED, RUNWAYS 13C/31C RENUMBERED AS NEW RUNWAYS 13L/31R.					CHECK ONE:	
					<input type="checkbox"/> FLT CK REQ <input checked="" type="checkbox"/> NFCR <input type="checkbox"/> REJECT	
					<div style="display: flex; justify-content: space-between;"> YES NO </div>	
					CPV COMPLETE?	
				X		
PROCEDURE RESULTS						
INSPECTION DATE: 04/03/2025	CREW #: VN329	N #:	INSTRUMENT PROCEDURE STATUS: <input checked="" type="checkbox"/> SAT <input type="checkbox"/> SAT W/CHANGES <input type="checkbox"/> UNSAT		ARINC CODING: <input type="checkbox"/> SAT <input type="checkbox"/> SAT/GOLD <input type="checkbox"/> UNSAT	
FLIGHT INSPECTOR SIGNATURE: glen b freeman @ 04/03/2025 08:55			PRINTED NAME: FREEMAN, GLEN BURSON			NOTAM INITIATED? <input type="checkbox"/> YES <input checked="" type="checkbox"/> NO
FLIGHT INSPECTOR REMARKS: ILS OR LOC RWY 13C ADMT 1 CANCELLED, ORIGINAL ILS OR LOC RWY 13L CREATED - RUNWAYS 13C/31C DEACTIVATED, RUNWAYS 13C/31C RENUMBERED AS NEW RUNWAYS 13L/31R.						
IN-FLIGHT OBSTACLE REPORT						
OBSTRUCTION ID #:	COORDINATES OR LOCATION:	GNSS ALTITUDE (MSL):	BAROMETRIC ALTITUDE (MSL):	HEIGHT ABOVE GROUND LEVEL:		

LOC/DME I-MDW	APP CRS	Rwy Idg	6059
109.9	138°	TDZE	611
Chan 36		Apt Elev	620

ILS or LOC RWY 13L
CHICAGO MIDWAY INTL (MDW)

DME required for LOC only.			MISSED APPROACH: Climb to 1100 then climbing right turn to 2300 on heading 220° and on EON VORTAC R-001 until crossing IGEKY INT/EON 20 DME then climb to 2600 to EON VORTAC and hold.		
Rwy 13L helicopter visibility reduction below RVR 4000 NA.			D-ATIS	CHICAGO APP CON	MIDWAY TOWER
			132,75	128,2 388,0	135,2 269,125
			GND CON	CLNC DEL	CPDLC
			118,075	124,625	



ELEV 620 TDZE 611		1100 2300 EON R-001 IGEKY INT EON 20 2600 EON			
HEBKU INT I-MDW 10.1		HITOB I-MDW 4.2			
2600 (134°T) 138°		HISKO I-MDW 2.4			
GS 3.00° TCH 46		I-MDW 1.1 I-MDW DME ANTENNA I-MDW 0.1			
6 NM		1.7 NM			
1.4 NM		1.1 NM			
CATEGORY	A	B	C	D	
S-ILS 13L	861/40 250 (300-¾)				
S-LOC 13L	1020/55 409 (400-1)		1020/60 409 (400-1½)		
CIRCLING	1120-1 500 (500-1)		1340-2 720 (800-2)		1340-2½ 720 (800-2½)

23278

ILS or LOC RWY 13C
CHICAGO MIDWAY INTL (MDW)

MISSED APPROACH: Climb to 1100 then climbing right turn to 2300 on heading 220° and on EON VORTAC R-001 until crossing IGECY INT/EON 20 DME then climb to 2600 to EON VORTAC and hold.

IAF
DUPAGE
108.4 DPA
Chan 21

2600
085°
(19.1)

R-085

HEBKU INT
I-MDW
10.1

OBK 113.0
R-178
Chan 77

318°

2000
138°
(6)

HITOB
I-MDW
4.2

HISKO
I-MDW
2.4

798
757
791
811

2325
915
731

LOCALIZER 109.9
I-MDW
Chan 36

1034
EON 113.2
Chan 79

IGECY INT
EON 20
2300

R-001

CGT 114.2
R-300
Chan 69

MSA CGT 25 NM
3400
090°
270°
2800

ELEV 620
D
TDZE 611

138°

MISSED
APCH FIX

PEOTONE
EON 113.2
Chan 79

HEBKU INT I-MDW <u>10.1</u>		HITOB I-MDW <u>4.2</u>		HSKO I-MDW <u>2.4</u>		I-MDW DME ANTENNA I-MDW <u>0.1</u>	
2600 138°		2000 *1440		*I-MDW <u>1.1</u>		I-MDW DME ANTENNA I-MDW <u>0.1</u>	
GS 3.00° TCH 46°							
6 NM		1.7 NM		1.4 NM		1.1 NM	
CATEGORY S-ILS 13C		A		B		C	
S-LOC 13C		1020/55 409 (400-1)		1020/60 409 (400-1¼)		1340-2 720 (800-2)	
C CIRCLING		1120-1 500 (500-1)		1340-2 720 (800-2)		1340-2¼ 720 (800-2¼)	

CHICAGO MIDWAY INTL (MDW)
ILS or LOC RWY 13C

EC-3, 11 JUL 2024 to 08 AUG 2024

