

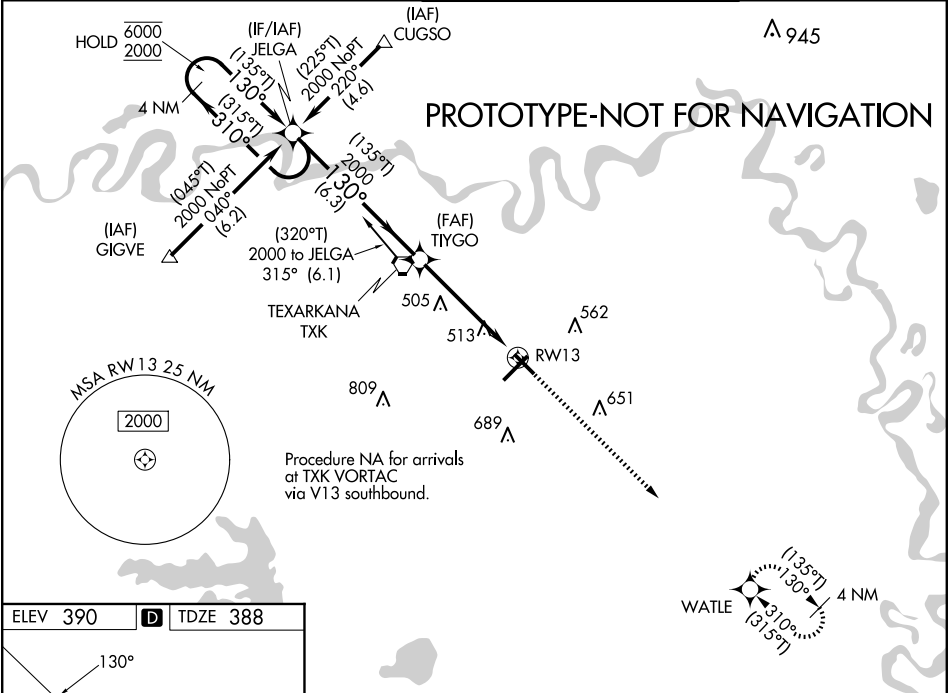
Flight Procedures Cover Page	Task Action: FLIGHT CHECK	Task Type: IAP	Estimated Chart Date: 08/10/2023	APWS Task ID: 754DD8CC9CF2450DBB6D3B8E4E77BF9E	APWS Project ID: 2B64B7C6A2E64C4F8BF655E904258A7F
Procedure: RNAV (GPS) RWY 13 AMDT 0D		Enroute: NO	Specialist: Dumar, Ralph		Agreement Number:
Airport ID: KTXK			Airport City: TEXARKANA		State: AR
Facility ID:	Facility Type:	Flight Inspection Remark Type: New FC Slot			
<div>Procedure Comments: PENDING AIRPORT DATA USED.</div> <div>REMARKS: T-NOTAM CANX PROJECT. LNAV FINAL: NEW CONTROLLING OBSTRUCTION. CONTACT RAKE MCGRAW (405) 954-8711</div> <div><div>QUALITY 10 CHECKED</div><div>QUALITY 41 CHECKED</div></div>					

WAAS Ch 87099 W13A	APP CRS 130°	Rwy Idg 4559 TDZE 388 Apt Elev 390
--	------------------------	---

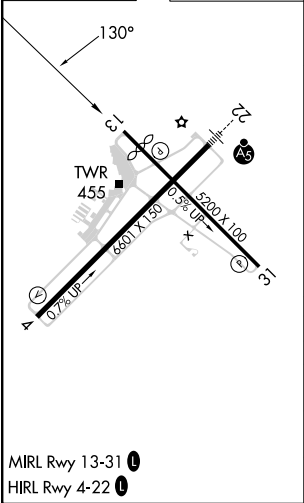
RNAV (GPS) RWY 13
TEXARKANA RGNL-WEBB FLD (TXK)

RNP APCH - GPS. Baro-VNAV and VDP NA when using De Queen altimeter setting. Rwy 13 helicopter visibility reduction below 3/4 SM NA. For uncompensated Baro-VNAV systems, LNAV/VNAV NA below -15°C or above 54°C. When local altimeter setting not received, use De Queen altimeter setting and increase LPV DA to 748 feet and all Cats visibility 1/4 SM, LNAV/VNAV DA to 868 feet all Cats visibility 3/8 SM, and all MDAs 100 feet and LNAV and Circling Cats C/D visibility 1/4 SM.	MISSED APPROACH: Climb to 2000 direct WATLE and hold.
--	--

ATIS 120.2	FORT WORTH CENTER 123.925 269.475	TEXARKANA TOWER ★ 123.875 (CTAF) 0 235.625	GND CON 119.225
----------------------	---	--	---------------------------



ELEV 390	D	TDZE 388
----------	----------	----------



VGSi and RNAV glidepath not coincident (VGSi Angle 3.00/TCH 48).				2000	WATLE
4 NM Holding Pattern JELGA				2000	
6000 2000				2000	
GP 3.00° TCH 54				1.2 NM to RWY 13	
6.3 NM				3.8 NM	1.2 NM
CATEGORY	A	B	C	D	
LPV DA	648-3/4		260 (300-3/4)		
LNAV/VNAV DA	768-1		380 (400-1)		
LNAV MDA	780-1	392 (400-1)	780-1 1/8	392 (400-1 1/8)	
CIRCLING	820-1 430 (500-1)	900-1 510 (600-1)	1000-1 3/4 610 (700-1 3/4)	1080-2 1/4 690 (700-2 1/4)	

RNP APCH

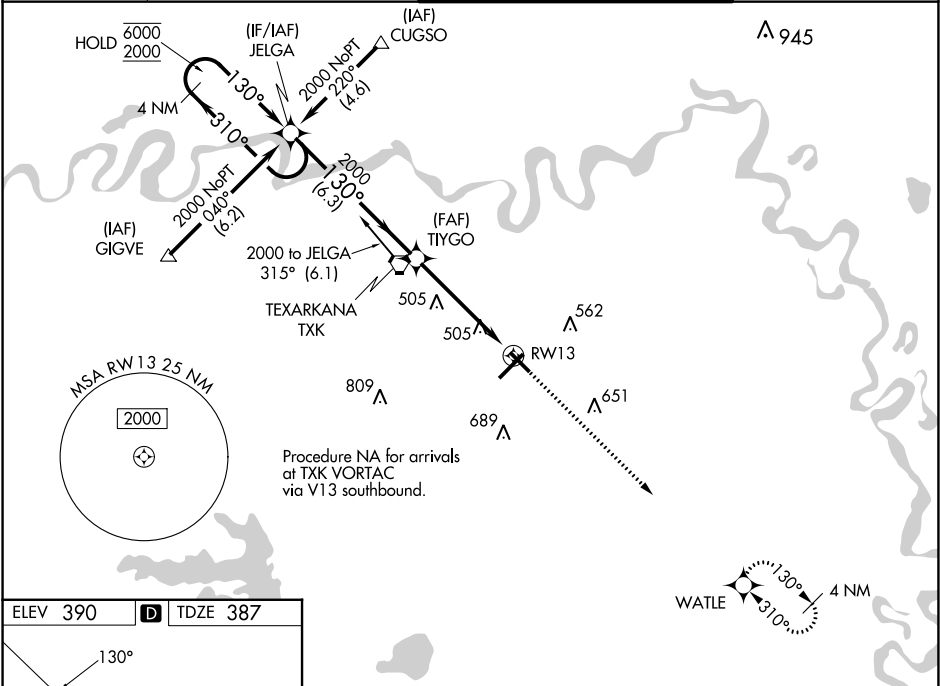
▼

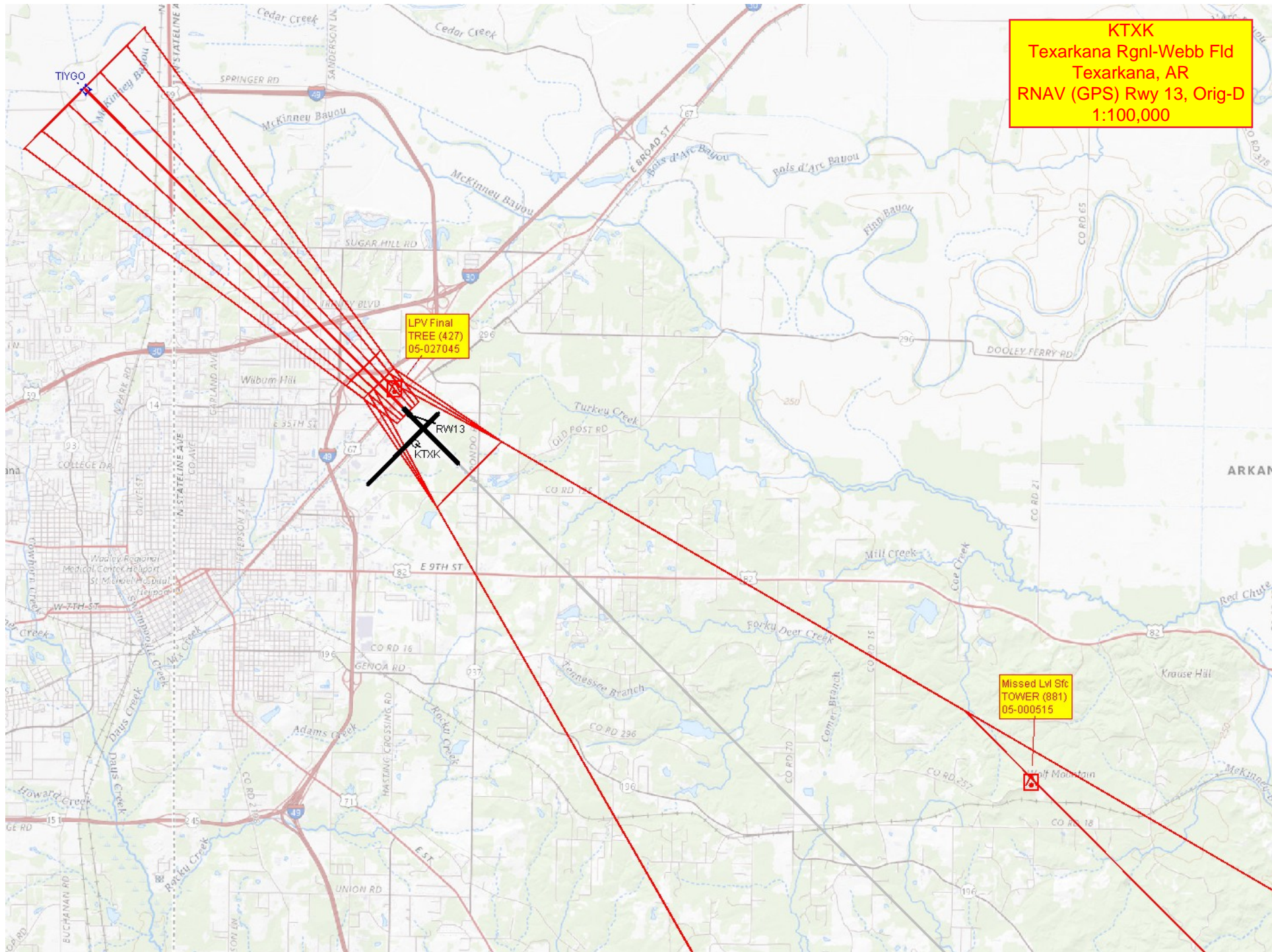
Baro-VNAV and VDP NA when using De Queen altimeter setting. Rwy 13 helicopter visibility reduction below ¾ SM NA. For uncompensated Baro-VNAV systems, LNAV/VNAV NA below -15°C or above 54°C. When local altimeter setting not received, use De Queen altimeter setting and increase all DA/MDA 100 feet; increase LNAV/VNAV all Cats and LNAV Cat C/D visibility ¾ SM, and Circling Cat C/D visibility ¼ SM.

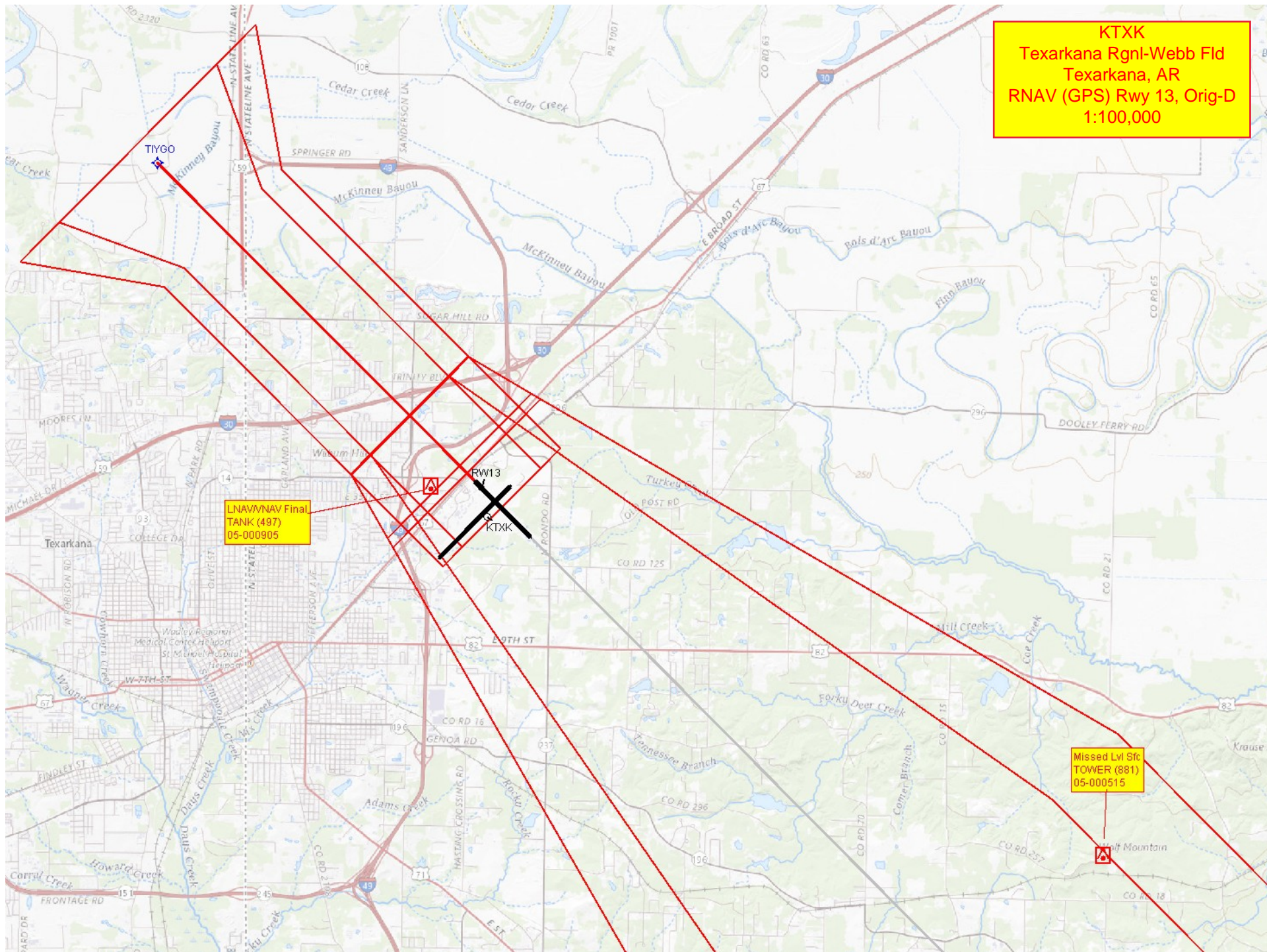
▲

MISSED APPROACH:
Climb to 2000 direct
WATLE and hold.

ATIS 120.2	FORT WORTH CENTER 123.925 269.475	TEXARKANA TOWER ★ 123.875 (CTAF) 235.625	GND CON 119.225
---------------	--------------------------------------	---	--------------------







KTXK
Texarkana Rgnl-Webb Fld
Texarkana, AR
RNAV (GPS) Rwy 13, Orig-D
1:100,000

LNAV/VNAV Final
TANK (497)
05-000905

Missed Lvl Sfc
TOWER (881)
05-000515

KTXK
Texarkana Rgnl-Webb Fld
Texarkana, AR
RNAV (GPS) Rwy 13, Orig-D
1:100,000

