

Flight Procedures Cover Page	Task Action: P-NOTAM	Task Type: IAP	Estimated Chart Date: 05/19/2022	APWS Task ID: 754A9126DA2C4C9D80CAFA0B7F5DB197	APWS Project ID: CE63A535A09343E3988E463F47F6B468
Procedure: RNAV (GPS) RWY 31 AMDT 1D		Enroute: NO	Specialist: Boone-walt, Rose		Agreement Number:
Airport ID: KLEE			Airport City: LEESBURG		State: FL
Facility ID:	Facility Type:	Flight Inspection Remark Type:			
<div>Procedure Comments: PNOTAM CIRCLING RADII INCREASE CONTACT: JASON KRETSCHMER AJV-A421 LEAD: 405.954.4019</div> <div><div>Digitally signed by JASON KRETSCHMER Mar 12, 2022</div><div><div>QUALITY 9 CHECKED</div><div>QUALITY 47 CHECKED</div></div></div>					

WAAS CH 97602 W31A	APP CRS 315°	Rwy Idg TDZE 73 Apt Elev 76
--	------------------------	---



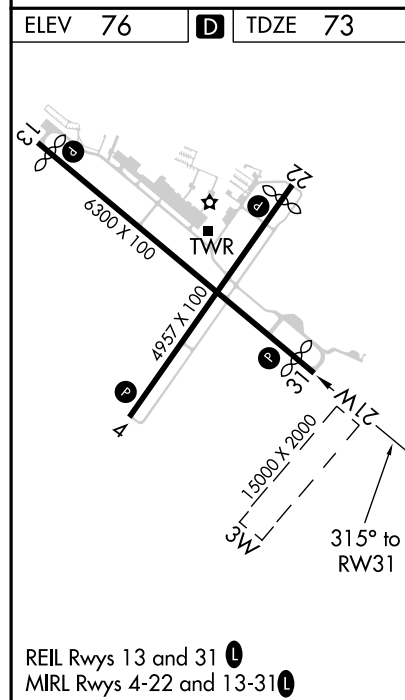
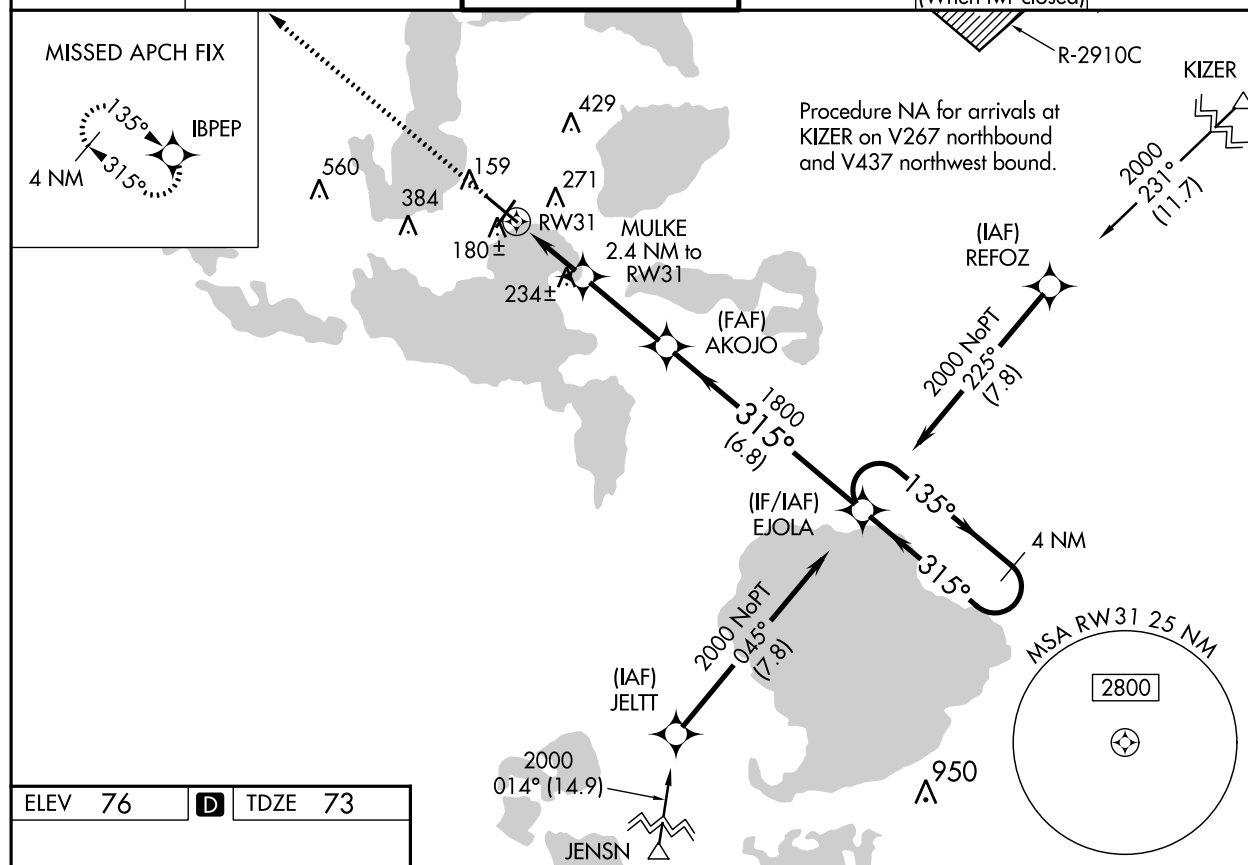
RNAV (GPS) RWY 31

LEESBURG INTL (LEE)

⚠ Baro-VNAV NA when using Orlando Intl altimeter setting. For uncompensated Baro-VNAV systems, LNAV/VNAV NA below -15°C (5°F) or above 43°C (109°F). DME/DME RNP-0.3 NA.
⚠ Helicopter visibility reduction below 1 SM NA. When local altimeter setting not received, use Orlando Intl altimeter setting and increase all DA 85 feet and all MDA 100 feet; increase LPV all Cats visibility 1/8 mile, increase LNAV/VNAV all Cats, LNAV and Circling Cats C/D visibility 1/4 mile. When VGSI inop, Straight-in/Circling Rwy 31 procedure NA at night. When VGSI inop, Circling Rwy 3 and 21 NA at night.

MISSED APPROACH:
Climb to 2000 direct
IBPEP and hold.

ATIS 134.325	ORLANDO APP CON 135.3 351.9	LEESBURG TOWER ★ 119.35 (CTAF) 0	GND CON 121.725	CLNC DEL 120.225 (When twr closed)	UNICOM 122.725
------------------------	---------------------------------------	---	---------------------------	---	--------------------------



2000	IBPEP	VGSI and RNAV glidepath not coincident (VGSI Angle 3.00/TCH 40).			
*LNAV only.					
MULKE 2.4 NM to RW31	AKOJO 1800	EJOLA 4 NM Holding Pattern	135°	2000	
RW31	315°	1800	315°		GP 3.00° TCH 45
2.4 NM	2.9 NM	6.8 NM			
CATEGORY	A	B	C	D	
LPV DA	323-1	250 (300-1)			
LNAV/VNAV DA	357-1	284 (300-1)			
LNAV MDA	500-1	427 (500-1)	500-1 1/4	427 (500-1 1/4)	
CIRCLING	700-1	624 (700-1)	700-1 3/4	624 (700-1 3/4)	700-2 624 (700-2)



**KLEE
LEESBURG INTL
LEESBURG, FL
CIRCLING**

