



Flight Procedures Cover Page	Task Action: P-NOTAM	Task Type: IAP	Estimated Chart Date: 08/12/2021	APWS Task ID: 74B8D386ABB24BFF921FB4CA13473642	APWS Project ID: 60F491108D2E4F66938CF99A074C54BE
Procedure: ILS OR LOC RWY 13 AMDT 1C		Enroute: NO	Specialist: Hawkins, Howard		Agreement Number:
Airport ID: KOZW			Airport City: HOWELL		State: MI
Facility ID:	Facility Type:	Flight Inspection Remark Type:			
<p>Procedure Comments: P-NOTAM</p> <p>This Cancels FDC 1/1119</p> <p>Order 8260.3, CHAPTER 2, New Circling Criteria Applied</p> <p>Contact Dave Teffeteller at 202-267-5177</p> <div style="text-align: right;">  <p>Digitally signed by MARY MCDONALD Jun 25, 2021</p> </div>					

LOC/DME I-OGO	APP CRS	Rwy Idg	5002
108.55	132°	TDZE	962
Chan 22 (Y)		Apt Elev	962

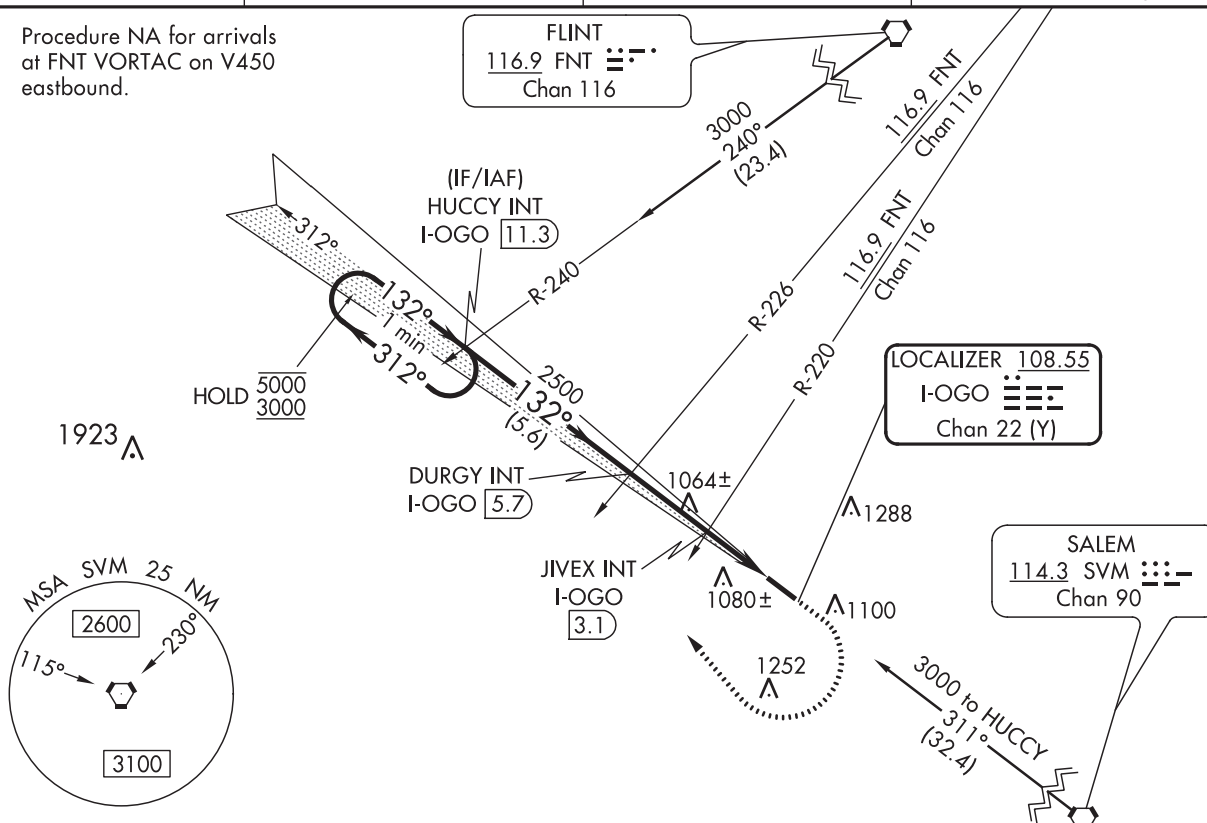
OLD**ILS or LOC RWY 13**

LIVINGSTON COUNTY SPENCER J HARDY (OZW)

▼ ▲ NA For inop ALS, increase LOC Cat C and D visibility to 1 $\frac{1}{2}$ SM, and JIVEX fix minimums S-13 Cat C and D visibility to 1 SM.	MALSR 	MISSED APPROACH: Climb to 1600 then climbing right turn to 3000 heading 356° and I-OGO NW course to HUCCY INT/ I-OGO 11.3 DME and hold.
--	---	--

AWOS-3 118.875	DETROIT APP CON 132.35 284.0	CLNC DEL 121.725 (GCO)	UNICOM 123.0 (CTAF) ①
--------------------------	--	----------------------------------	--

Procedure NA for arrivals at FNT VORTAC on V450 eastbound.



One Minute Holding Pattern					HUCCY INT I-OGO 11.3					1600					3000					HUCCY INT					ELEV 962					TDZE 962																								
5000 ← 312°					132° →					132°					2500					DURGY INT I-OGO 5.7					JIVEX INT I-OGO 3.1					*I-OGO 2					*I-OGO 1					*LOC only														
GS 3.00°					TCH 48					2500					*1540																																							
5.6 NM					2.6 NM					1.1					1.0																																							
CATEGORY					A					B					C					D																																		
S-ILS 13					1162-1/2					200 (200-1/2)																																												
S-LOC 13					1540-1/2					578 (600-1/2)					1540-1 1/4					578 (600-1 1/4)																																		
CIRCLING					1540-1					578 (600-1)					1540-1 5/8					578 (600-1 5/8)					1540-2					578 (600-2)																								
JIVEX FIX MINIMUMS (DUAL VOR RECEIVERS OR DME REQUIRED)																									HIRL Rwy 13-31 L					REIL Rwy 31 L					FAF to MAP 4.7 NM																			
S-LOC 13					1320-1/2					358 (400-1/2)					1320-5/8					358 (400-5/8)																																		
CIRCLING					1400-1					438 (500-1)					1420-1					458 (500-1)					1420-1 1/2					458 (500-1 1/2)					1520-2					558 (600-2)														
																									Knots					60					90					120					150					180				
																									Min:Sec					4:42					3:08					2:21					1:53					1:34				

132° 4.7 NM from FAF

EC-1, 28 JAN 2021 to 25 FEB 2021

EC-1, 28 JAN 2021 to 25 FEB 2021

**KOZW
LIVINGSTON COUNTY SPENCER J HARDY
HOWELL, MI.
ILS OR LOC RWY 13, AMDT 1C
1:100,000**

The map displays the Livingston County Airport (KOZW) in Howell, Michigan. Two red circles are drawn around the airport, indicating the boundaries for the Circling CAT C/D Tower (1288) and the Circling CAT A/B Tower (1100). The map also shows the surrounding area, including the Fowlerville and Howell communities, and the Livingston County State Wildlife Area. The map is a topographic representation with contour lines and various geographical features.

Circling CAT A/B TOWER (1100)
26-003020