

Flight Procedures Cover Page	Task Action: P-NOTAM	Task Type: IAP	Estimated Chart Date: 09/08/2022	APWS Task ID: 737B06CF33E641CF9C59EE6D542D89AE	APWS Project ID: 53D726FC3AE446EDBC76E4CE303A6EC6
Procedure: VOR/DME RWY 27, AMDT 2C		Enroute: NO	Specialist: Dowling, David		Agreement Number:
Airport ID: KRKS			Airport City: ROCK SPRINGS		State: WY
Facility ID:	Facility Type:	Flight Inspection Remark Type:			
<div>Procedure Comments: TDZE 6765, S-27 HAT 275 ALL CATS.</div> <div>"Processed IAW Technical Support Group (AJF-17) Memo dated 07/07/2021, Subject: Guidance for Procedural Changes Requiring Flight Inspection/Validation."</div> <div>MANAGER CONTACTS: MARK ADAMS, AJV-A412, (405) 954-4608; JULIE MORGAN, AJV-A410, (405) 954-8568.</div> <div>2/5013</div> <div>03/29/2022</div> <div>QUALITY 14 CHECKED</div> <div>QUALITY 41 CHECKED</div>					

VOR/DME OCS <b><u>116.0</u></b> Chan <b>107</b>	APP CRS <b>255°</b>	Rwy Idg <b>10000</b> TDZE <b>6760</b> Apt Elev <b>6765</b>
---	------------------------	--

VOR/DME RWY 27  
SOUTHWEST WYOMING RGNL (RKS)

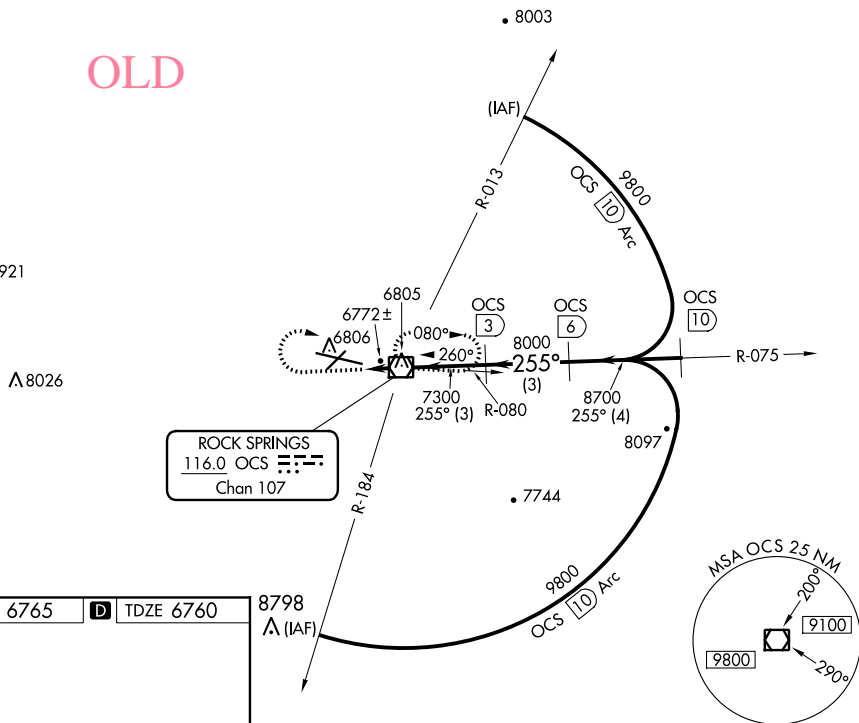


Inoperative table does not apply to Cat D.

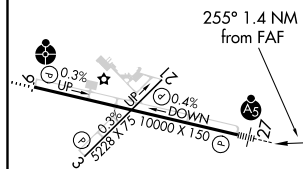


**MISSED APPROACH:** Climb to 7700, then climbing right turn to 9100 direct OCS VOR/DME and hold.

ASOS <b>118.375</b>	SALT LAKE CENTER <b>124.35 353.5</b>	UNICOM <b>122.8 (CTAF) ①</b>
------------------------	---	---------------------------------



ELEV 6765	<b>D</b>	TDZE 6760
-----------	----------	-----------



7700 ↑	9100 ↗	OCS □				
CATEGORY	A	B	C	D		
S-27	7040-1/2 280 (300-1/2)			7040-1 280 (300-1)		
<b>C</b> CIRCLING	7140-1 375 (400-1)	7220-1 455 (500-1)	7220-1 1/2 455 (500-1 1/2)	NA		