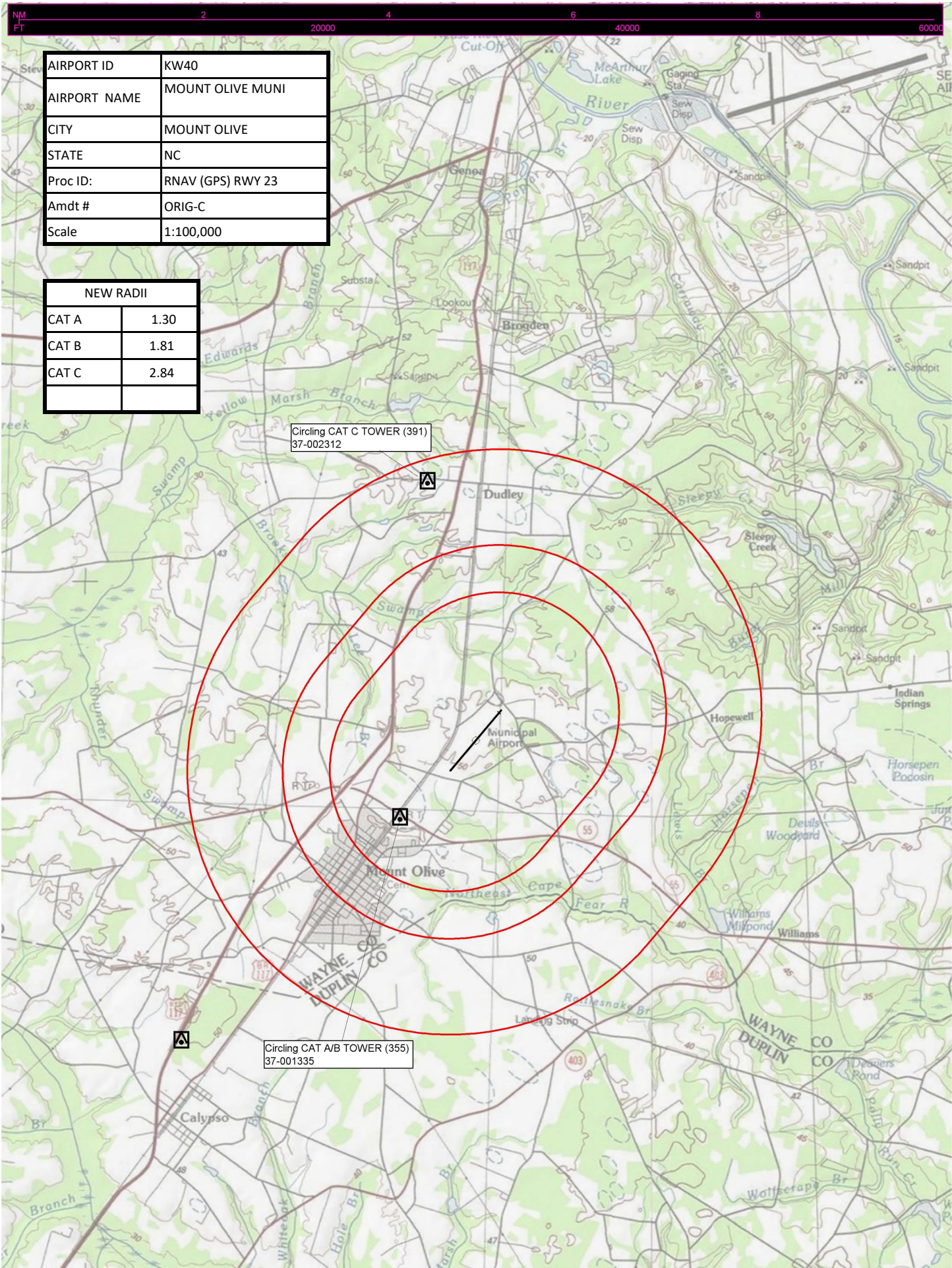


Flight Procedures Cover Page	Task Action: P-NOTAM	Task Type: IAP	Estimated Chart Date: 07/15/2021	APWS Task ID: 72D05A7007164BDD9D69E17317C5E3A1	APWS Project ID: 23CA454664D04BA4B28158EABAFB33AA
Procedure: RNAV GPS RWY 23, ORIG-C		Enroute: NO	Specialist: Sickels, Dale		Agreement Number:
Airport ID: W40			Airport City: MOUNT OLIVE		State: NC
Facility ID:	Facility Type:	Flight Inspection Remark Type:			
<p>Procedure Comments:</p> <p>PNOTAM CIRCLING RADII INCREASE CONTACT JASON KRETSCHMER, AJV-A421, 405-954-4019</p> <p style="text-align: center;"><i>Digitally signed by</i> JASON KRETSCHMER May 05, 2021</p> <div style="text-align: right; margin-top: 200px;"> <p>05/04/2021</p> <div style="display: inline-block; text-align: center;"> <p>QUALITY 14 CHECKED</p> </div> <div style="display: inline-block; text-align: center; margin-left: 50px;"> <p>QUALITY 38 CHECKED</p> </div> </div>					



AIRPORT ID	KW40
AIRPORT NAME	MOUNT OLIVE MUNI
CITY	MOUNT OLIVE
STATE	NC
Proc ID:	RNAV (GPS) RWY 23
Amdt #	ORIG-C
Scale	1:100,000

NEW RADII	
CAT A	1.30
CAT B	1.81
CAT C	2.84

Circling CAT C TOWER (391)
37-002312

Circling CAT A/B TOWER (355)
37-001335

WAAS
CH **90331**
W23A

APP CRS
229°

Rwy Idg
TDZE **166**
Apt Elev **166**

RNAV (GPS) RWY 23

MOUNT OLIVE MUNI (W40)

▼

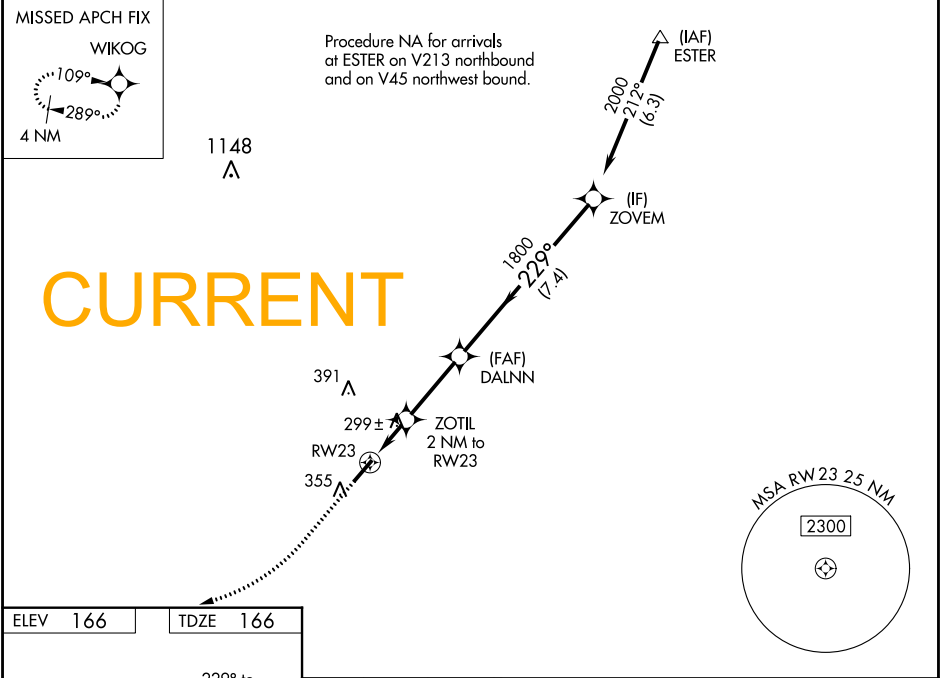
▲ NA

DME/DME RNP-0.3 NA. Rwy 23 helicopter visibility reduction below ¼ SM NA. Obtain Seymour-Johnson altimeter setting on CTAF; when not received, use Duplin Co altimeter setting and increase LPV DA to 461, and all MDA 20 feet, increase LNAV Cat C visibility ½ mile.

MISSED APPROACH: Climb to 700 then climbing right turn to 2000 direct WIKOG and hold.

SEYMOUR JOHNSON APP CON ★
119.7 273.6

UNICOM
122.8 (CTAF) 0



ELEV 166

TDZE 166

229° to RW23

700

2000

WIKOG

VGSI and RNAV glidepath not coincident (VGSI Angle 3.50/TCH 43).

* LNAV only.

ZOVEM

2000

GP 3.00° TCH 53

CATEGORY	A	B	C	D
LPV DA	452-1	286 (300-1)		NA
LNAV MDA	580-1	414 (500-1)	580-1½ 414 (500-1½)	NA
CIRCLING	700-1	534 (600-1)	700-1½ 534 (600-1½)	NA

SE-2, 22 APR 2021 to 20 MAY 2021

SE-2, 22 APR 2021 to 20 MAY 2021