

Flight Procedures Cover Page	Task Action: FLIGHT CHECK	Task Type: IAP	Estimated Chart Date: 04/22/2021	APWS Task ID: 7267D8A8E2B94AEE82F739D85318F9C1	APWS Project ID: 2E5BD9B81E644B53BB98A39A31AE3877
Procedure: RNAV (GPS) RWY 27 AMDT 2		Enroute: NO	Specialist: Schutrum, Steven		Agreement Number:
Airport ID: KOGS			Airport City: OGDENSBURG		State: NY
Facility ID:	Facility Type:	Flight Inspection Remark Type: New FC Slot			

**Procedure Comments:**  
Major amendment using KOGS active airport data.

VOR MON, MSS VTAC decommissioned.

Contact Jason Kretschmer, 405-954-4019.

*Digitally signed by*  
**JASON KRETSCHMER**  
Jan 15, 2021

01/15/2021: THIS IS AN UPDATED COPY OF THE FORM DEVELOPED ON 12/02/2020.  
(SSENA 8260-2):  
1. ADDED EN ROUTE HIGH AND CONTROLLER HIGH TO REQUIRED CHARTING.

QUALITY  
49  
CHECKED

FIPC BASIC FORM										
PROCEDURE: RNAV (GPS) RWY 27 AMDT 2			AIRPORT NAME: OGDENSBURG INTL		AIRPORT ID: KOGS		SPECIAL CONTROL NO: YG-01-185-21			
FAC ID: KOGS27.02		CITY: OGDENSBURG			ST: NY		ORIG CHART DATE: 04/22/2021			
DFL TYPE: PROC/S	THIRD PARTY: <input type="checkbox"/> YES	EST. TIME ON SITE: 0.4	REIMB. NUMBER:		PTS TASK ID:					
PREFLIGHT NOTES										
REVIEWER:					DATE:					
COMMENTS:					CHECK ONE: <input type="checkbox"/> FLT CK REQ <input type="checkbox"/> NFCR <input type="checkbox"/> REJECT					
									YES	NO
					CPV COMPLETE?				X	
PROCEDURE RESULTS										
INSPECTION DATE: 02/24/2021		CREW #: VN484	N #: N73	INSTRUMENT PROCEDURE STATUS: <input checked="" type="checkbox"/> SAT <input type="checkbox"/> SAT W/CHANGES <input type="checkbox"/> UNSAT			ARINC CODING: <input checked="" type="checkbox"/> SAT <input type="checkbox"/> SAT/GOLD <input type="checkbox"/> UNSAT			
FLIGHT INSPECTOR SIGNATURE: jeremy r virts @ 02/24/2021 14:28			PRINTED NAME: VIRTS, JEREMY RYAN				NOTAM INITIATED? <input type="checkbox"/> YES <input checked="" type="checkbox"/> NO			
FLIGHT INSPECTOR REMARKS:										
IN-FLIGHT OBSTACLE REPORT										
OBSTRUCTION ID #:	COORDINATES OR LOCATION:		GNSS ALTITUDE (MSL):		BAROMETRIC ALTITUDE (MSL):		HEIGHT ABOVE GROUND LEVEL:			

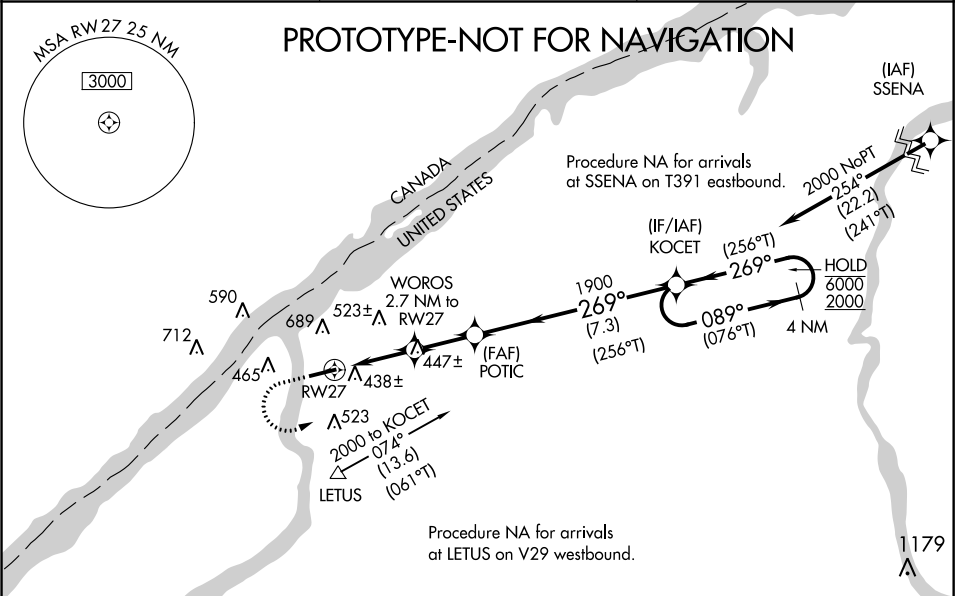
WAAS CH <b>40041</b> <b>W27A</b>	APP CRS <b>269°</b>	Rwy Idg TDZE Apt Elev	<b>6035</b> <b>302</b> <b>302</b>
--	------------------------	-----------------------------	---

RNAV (GPS) RWY 27

OGDENSBURG INTL (OGS)

RNP APCH.	MISSED APPROACH: Climb to 800 then climbing left turn to 2000 direct KOCET and hold.
<div><div>▼</div><div>▲</div></div> For uncompensated Baro-VNAV systems, LNAV/VNAV NA below -15°C or above 54°C.	

AWOS-3 <b>118.525</b>	BOSTON CENTER <b>135.25 377.1</b>	UNICOM <b>122.8 (CTAF) 0</b>
--------------------------	--------------------------------------	---------------------------------



ELEV 302

D

TDZE 302

800

2000

KOCET

\*LNAV only.

RW27

WOROS 2.7 NM to RW27

POTIC 1900

1900

4 NM

KOCET Holding Pattern

(076°T)

089° → 6000

← 269° 2000

(256°T)

GP 3.00°

TCH 45

CATEGORY	A	B	C	D
LPV DA	552-¾		250 (300-¾)	
LNAV/VNAV DA	717-1⅛		415 (500-1⅛)	
LNAV MDA	700-1	398 (400-1)	700-1⅛	398 (400-1⅛)
CIRCLING	760-1 458 (500-1)	1000-1 698 (700-1)	1000-2 698 (700-2)	1000-2¼ 698 (700-2¼)

REIL Rwy 27

HIRL Rwy 9-27

OLD

OGDENSBURG, NEW YORK

AL-5207 (FAA)

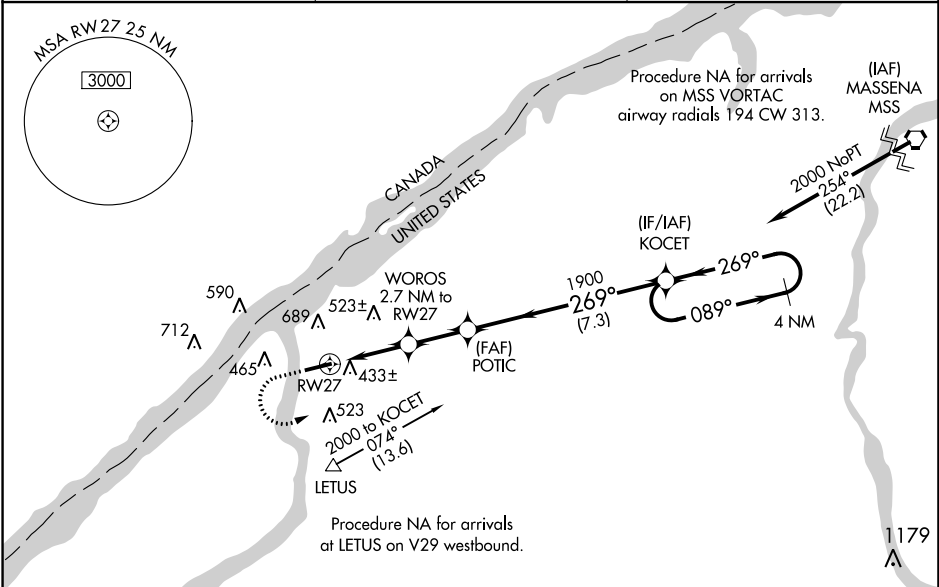
19059

WAAS CH <b>40041</b> <b>W27A</b>	APP CRS <b>269°</b>	Rwy Idg TDZE Apt Elev	<b>6035</b> <b>302</b> <b>302</b>
--	------------------------	-----------------------------	---

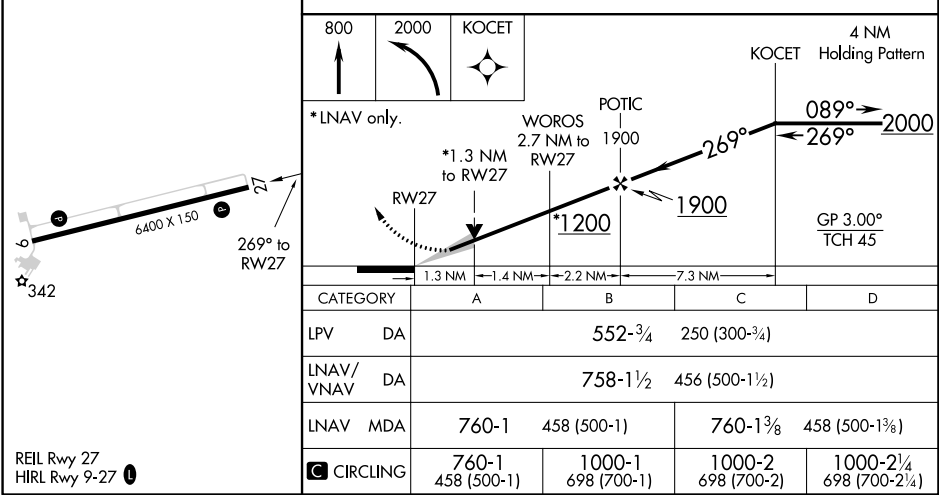
**RNAV (GPS) RWY 27**  
OGDENSBURG INTL (OGS)

<b>NA</b>	Baro-VNAV and VDP NA when using Massena altimeter setting. DME/DME RNP-0.3 NA. When local altimeter setting not received, use Massena altimeter setting and increase LPV DA to 636, LNAV/VNAV DA to 842 and all visibilities $\frac{3}{8}$ SM; increase all MDA 100 feet and LNAV and Circling Cat C and D visibilities $\frac{1}{4}$ SM. For uncompensated Baro-VNAV systems, LNAV/VNAV NA below -15°C (5°F) or above 54°C (130°F).	MISSED APPROACH: Climb to 800 then climbing left turn to 2000 direct KOCET and hold.
-----------	--	--

AWOS-3 <b>118.525</b>	BOSTON CENTER <b>135.25 377.1</b>	UNICOM <b>122.8 (CTAF) 0</b>
--------------------------	--------------------------------------	---------------------------------



ELEV 302	<b>D</b>	TDZE 302
----------	----------	----------



OGDENSBURG, NEW YORK

Amtd 1 15SEP16

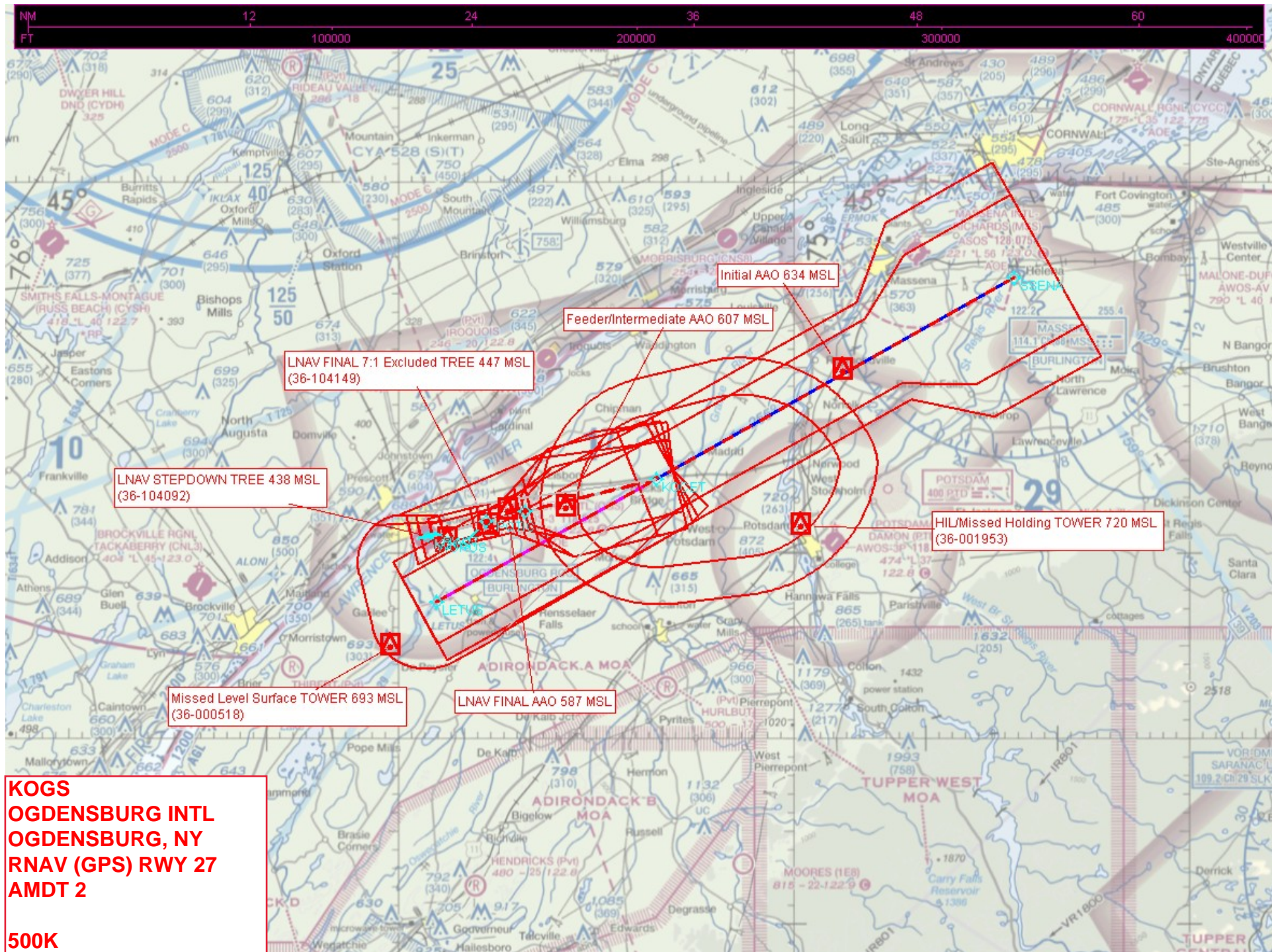
44°41'N-75°28'W

OGDENSBURG INTL (OGS)  
**RNAV (GPS) RWY 27**

NE-2, 03 DEC 2020 to 31 DEC 2020

NE-2, 03 DEC 2020 to 31 DEC 2020





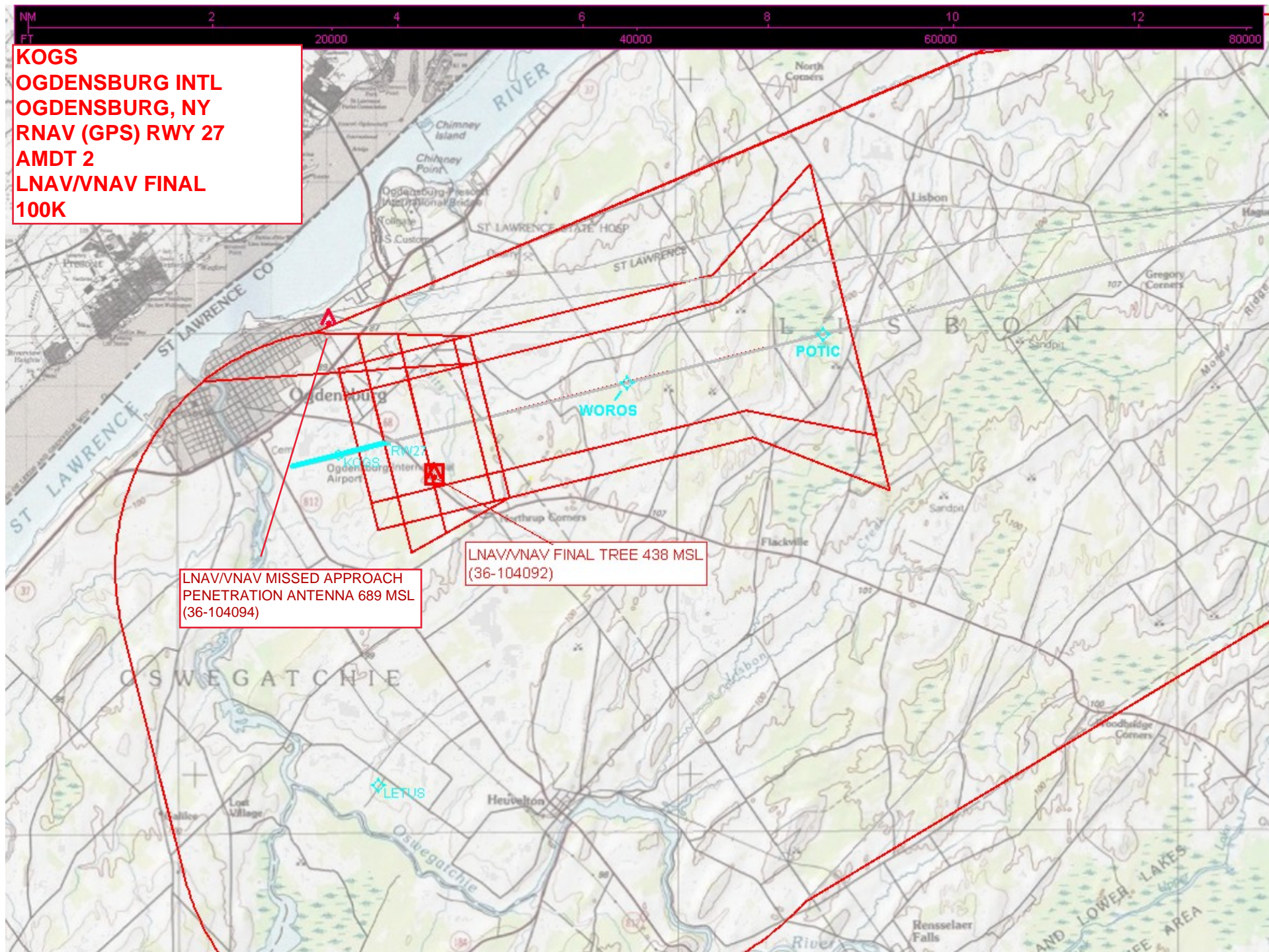


**KOGS  
OGDENSBURG INTL  
OGDENSBURG, NY  
RNAV (GPS) RWY 27  
AMDT 2  
LPV FINAL  
100K**

LPV FINAL TREE 365 MSL  
(36-139834)



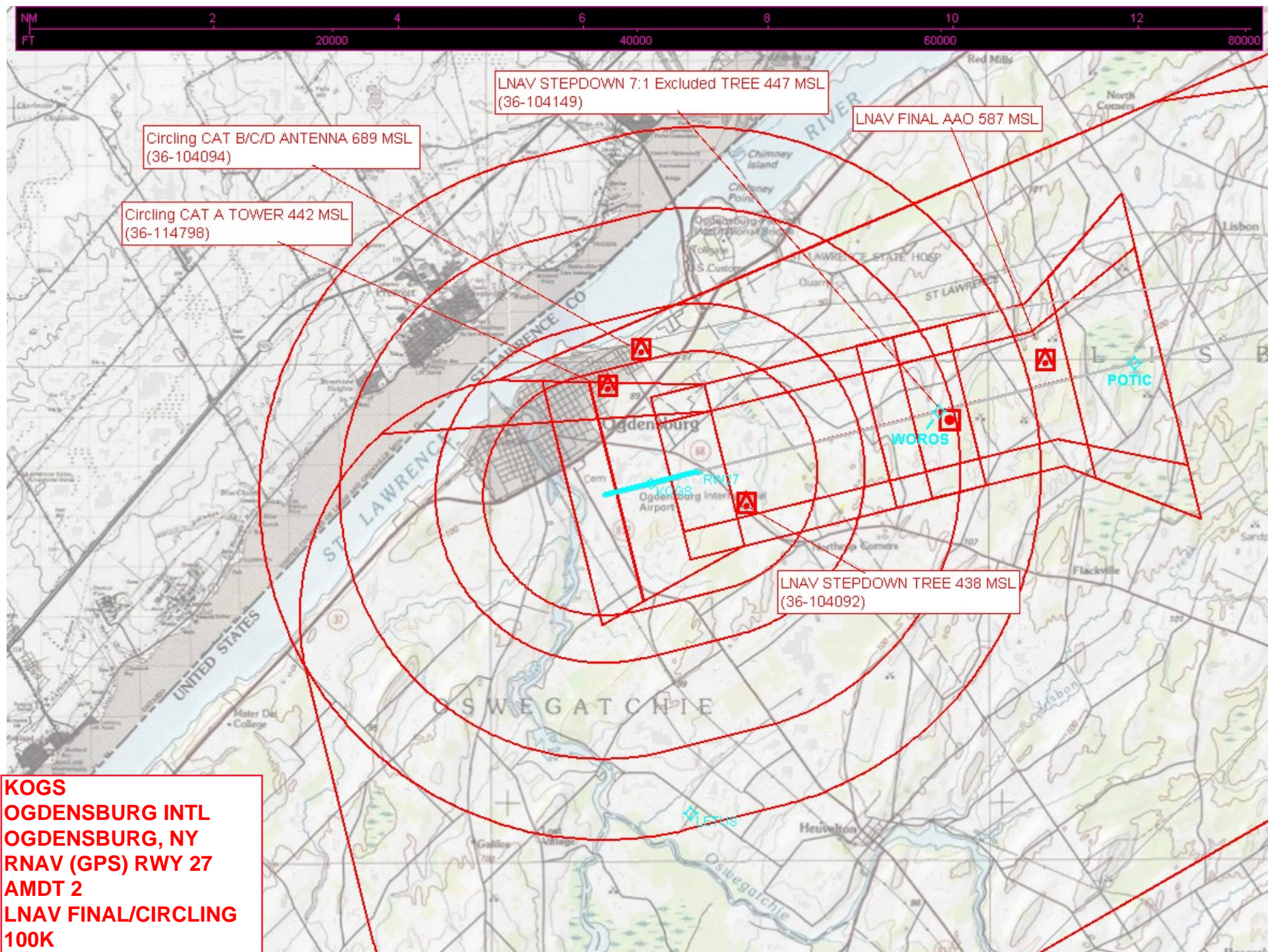
**KOGS**  
**OGDENSBURG INTL**  
**OGDENSBURG, NY**  
**RNAV (GPS) RWY 27**  
**AMDT 2**  
**LNAV/VNAV FINAL**  
**100K**



LNAV/VNAV MISSED APPROACH  
PENETRATION ANTENNA 689 MSL  
(36-104094)

LNAV/VNAV FINAL TREE 438 MSL  
(36-104092)







## Federal Aviation Administration Categorical Exclusion Declaration

**Date:** 11/26/19

**IFP:** Landry, Steven (Steven.L-CTR.Landry@faa.gov)

**Airport Contact:** -

**Request ID:** KOGS\_191113

**Single or Multiple Procedure:** Single

**Procedure Name(s):** OGS RNAV (GPS) RWY 27

**Procedure Request Description:**

1. Change MSS VORTAC to SENA waypoint.
2. Change procedure note to: "Procedure NA for arrivals on T739 northeast bound."

**Declaration of Exclusion:**

The FAA has reviewed the above referenced proposed action and it has been determined, by the undersigned, to be categorically excluded from further environmental documentation according to FAA Order 1050.1, "Environmental Impacts: Policies and Procedures." The implementation of this action will not result in any extraordinary circumstances in accordance with FAA Order 1050.1.

**Basis for this Determination:**

This review was conducted in accordance with policies and procedures in Department of Transportation Order 5610.1, "Procedures for Considering Environmental Impacts" and FAA Order 1050.1.

**The applicable Categorical Exclusion is:**

**5-6.5.k:** Publication of existing air traffic control procedures that do not essentially change existing tracks, create new tracks, change altitude, or change concentration of aircraft on these tracks. (ATO, AVS)

**The above flight procedure has been developed within the accepted parameters.**

Concurrence/Reviewed By: Andrew Pieroni Date: November 26, 2019

Title: Environmental Protection Specialist

Approved By: Charles J Gibson Date: 11/26/2019

Title: Team Manager, ECINA